

# Simmental Sale Offers 47 Lots

FREDERICK, Md. — The Tri-State Select Simmental Sale, hosted by the Maryland Simmental Association, was conducted here April 10.

The sale offered 47 lots from breeders representing the states of Maryland, New Jersey, New York, and Pennsylvania.

There were 17 open heifers sold which yielded a \$1,092 average. In addition, bred cows/heifers, cow calf pairs, and bulls were sold.

Messick Farms of Middleton, Pa., purchased the high-selling Triple L "Black Zena" heifer that was consigned by Larry Hughes of New Oxford, which sold for \$3,000. Simme Valley Ranch of Groton, N.Y., consigned the second highest selling lot which was purchased by Tony McNutt of Street, Md., for \$2,850. Other lots offered in the sale were AI sired by ER Big Sky 545B, Black Irish Kansas, BH Right Time 520E and Black Mick. Stagg Cattle Company of Mt. Pleasant, Texas purchased the top-selling cow/calf.

For the past two years Rick Smithson of White Hall, Md., has managed the Tri-State Select Simmental Sale. Both old and new

buyers alike have been excited about the increased number of quality animals which offered nationally recognized Simmental genetics.

Credit for the improvements in the sale should go primarily to Smithson and his management style. He has decreased the number of lots and implemented a new selection process in which he hand-selects the cattle. He focuses on cattle that are structurally sound that offer above-average EPDs and pedigrees. Cattle are selected to meet the needs of both the commercial and purebred breeder.

This year Steve Sellers of McDonough, Ga., was on hand to work the crowd and take bids. Sellers is a nationally known sales representative and photographer for The Register, the official publication of the American Simmental Association. The sale also utilized the services of R. Bruce Van Meter of Impact Marketing and Management, Inc. of Rome, Ga. As a sale consultant, Van Meter placed bids for out-of-state buyers.

Also offered for sale to the highest bidder were five #1 em-

bryos that were donated by Triple C Farms of Wisconsin. The proceeds of these sales will be used to help finance the 99 AJSA Eastern Regional Classic being held in Timonium, Md. June 30-July 3. The highest selling embryo was purchased by Hackberry Hill Farm of Pylesville, Md. for \$575.

In addition to the \$2,000 in cash prizes offered at the Maryland Simmental Breeders Cup held in conjunction with the Eastern National Livestock Show (Sept. 23-26) junior exhibitors who purchased heifers at the sale are eligible for additional cash awards at their County Fair, the Eastern Regional Classic, Maryland State Fair, and the Keystone International Livestock Expo. Several of the show heifer prospects, sold in the sale, are also nominated for the Pennsylvania Simmental Capitol Futurity in October.

The 2000 Tri-State Select Simmental Sale will be at the Frederick County Maryland Fair Grounds on Saturday, April 8, 2000.

Inquiries concerning upcoming Maryland Simmental related events should contact Rick Smithson, (410) 452-5243.



LLL Black Zena High Selling Lot at the 1999 Tri-State Select Simmental Sale. From left to right, are Larry Hughes of Triple Farm, consignor of LLL Zena, the buyers Sarah and Joseph Missick of Missick Farms, and James Boyer of Triple L Farm. Missick Farms also volume buyers.



Where's your mustache?™

*Eastern Shore  
Thresherman  
Show Aug. 6-8*

DENTON, Md. — The Eastern Shore Threshermen and Collectors Association Inc. will be holding its 39th annual Wheat Threshing, Steam and Gas Engine Show Aug. 6-8 at its showgrounds located on Rt. 313 between Denton and Federalsburg, Md. The show features free admission and free parking.

Besides the main attraction of wheat threshing, there will be shingle sawing, sawing with a miniature sawmill, and rock crushing. There will be steam engines, antique tractors, gasoline engines, antique cars, and steam models in operation.

A daily parade of all equipment will be 5 p.m. Friday and Saturday and 4 p.m. Sunday.

Kids of all ages will be able to ride "Smokey Joe," a miniature steam train which is a replica of the Civil War era "General" locomotive.

There will be something for everyone in the large flea market with more than 125 dealers.

Spectators won't want to miss our "Evolution of Threshing," which will demonstrate how threshing grain evolved from using the flail to the modern day combine, Saturday at 2 p.m.

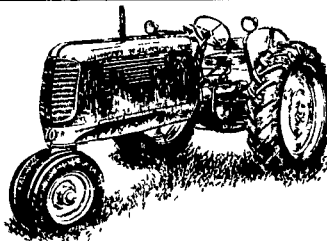
"The Country Troubadours" will provide a free country music show on Friday evening at 7:30 p.m. Saturday evening "The Country Diamonds" will be playing at 7:30. Sunday evening will feature "The Rescue Team" with country/gospel music at 5 p.m.

There will be plenty of good food with fried chicken platters, crab cakes, hamburgers, and hot dogs.

Exhibitors of antique equipment are welcome. There is no charge to exhibit. All times are subject to weather conditions.

The public is invited. For more information, contact Michael Stant, president, at (410) 673-2414 or (410) 754-8422 (showgrounds).

## ANTIQUE TRACTOR TIRES



# FREE

DELIVERY TO: **ROUGH AND TUMBLE SHOW**

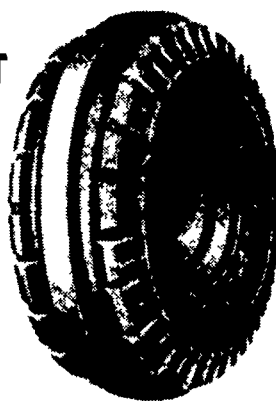
Kinzers, Pa. Aug. 18-21

(15 miles East of Lancaster on Rt. 30)

### FIRESTONE

#### "OLD STYLE" FRONT

400-12 .....	\$42
400-15.....	\$52
600-16.....	\$70
750-16.....	\$95
750-18.....	\$95



### BF GOODRICH

#### OLD 45° REAR TRACTOR TREAD

9.5-24	\$115	16.9-30	\$295
11.2-24	\$125	18.4-30	\$340
12.4-24	\$150	9.5-32	\$225
14.9-24	\$165	12.4-32	\$260
11.2-28	\$155	16.9-34	\$265
12.4-28	\$160	18.4-34	\$325
13.6-28	\$160	9.5-36	\$225
14.9-28	\$220	13.6-36	\$250
		11.2-38	\$190



## MANY, MANY MORE HARD-TO-FIND FARM TIRES

400-9 Implement	600-16 Rear	12-30 Rear
750-10 Front	600-18 Front	14.9-30 Rear
900-10 Front	400-19 Front	8.3-23 Rear
400-12 Implement	600-19 Front	11.2-34 Rear
400-12 Front	650-20 Front	11.2-36 Rear
600-12 Front	650-20 Front	9.5-40 Rear
600-14 Front	750-22 Rear	9.5-42 Rear
450-16 Front	7.2-30 Rear	12.4-42 Rear

**We Stock All  
Sizes Of Tubes,  
Rims & Wheels**

**SEND FOR  
FREE  
CATALOG**

# M.E. MILLER TIRE

17386 State Hwy 2  
Wauseon, OH 43567

**(419) 335-7010**

Ask For Extension 4  
8 AM - 5 PM Mon.-Fri.

[www.millertire.com](http://www.millertire.com)