

**Morrison Cove Livestock**

Martinsburg, Pa.  
July 26, 1999

Report Supplied by Auction

CATTLE: 192.  
STEERS CHOICE 62.75-67.00; GOOD 60.00-62.50.  
HEIFERS: CHOICE 61.50-66.50; GOOD 55.00-60.50.  
COWS: UTILITY & COMMERCIAL 34.00-40.50, CANNER AND LOW CUTTER 18.00-33.00.  
BULLOCKS: GOOD & CHOICE 42.50-55.00.  
BULLS: YIELD GRADE NO. 1 40.50-50.50.  
FEEDER CATTLE: STEERS 55.00-85.00; BULLS 47.00-76.50; HEIFERS 51.00-67.00.  
CALVES: 153. PRIME, NO MKT. TEST; CHOICE 74.00-85.00; GOOD 62.00-71.00; STANDARD 15.00-30.00; HOLSTEIN BULLS 90-130 LBS. 45.00-90.00; HOLSTEIN HEIFERS 90-130 LBS. 100.00-170.00.  
HOGS: 217, US NO. 1-2 33.00-34.50; US NO. 1-3 30.00-32.50.  
SOWS: US NO. 1-3 16.00-25.00.  
BOARS: 5.00-15.25.  
FEEDER PIGS: 25 HEAD. US#1&3 20-50 LBS. 7.00-21.00 HD.  
SHEEP: 65. CHOICE LAMBS 65.00-70.00, GOOD LAMBS 60.00-65.00, SLAUGHTER EWES 18.00-35.00.  
GOATS: 21.00-79.00 EA.

**New Holland Sales Stables**

Report Supplied By USDA  
Monday, July 26, 1999

	Calves	Sheep	Goats
Today	245	663	973
Last Week	197	978	1184
Last Year	288	563	1019

CALVES: COMPARED TO THURS.'S AUCTION, VEALER PRICES WERE 3.00-5.00 LOWER & SLAUGHTER CALVES TRADED 1.00-5.00 HIGHER. HOLSTEIN BULLS RETURNING TO FEED SOLD 8.00-20.00 LOWER & HOLSTEIN HEIFERS WERE STEADY ON A THIN TEST.  
VEALERS: GOOD AND CHOICE 70-110 LBS. 15.00-22.00, STANDARD AND LOW GOOD 60-90 LBS. 11.00-15.00.  
SLAUGHTER CALVES: GOOD AND CHOICE 200-350 LBS. 75.00-85.00; 350-550 LBS. 55.00-70.00; STANDARD 300-600 LBS. 50.00-60.00.  
RETURNED TO FARM: HOLSTEIN BULLS 95-125 LBS. 80.00-105.00. PLAINER TYPE BULLS 80-115 LBS. 36.00-72.00. COUPLE HOLSTEIN HEIFERS 90-95 LBS. 235.00-280.00. FEW

PLAINER HEIFERS 70-100 LBS. 140.00-200.00.  
SHEEP: COMPARED TO THURS. SLAUGHTER LAMBS SOLD FULLY 5.00 HIGHER WITH GOOD DEMAND RETURNING FOR THE LIGHTER WEIGHTS. SLAUGHTER EWES WERE STEADY TO 3.00 HIGHER.  
SLAUGHTER LAMBS: CHOICE AND PRIME 2-3 40-60 LBS. 85.00-100.00, 60-100 LBS. 75.00-85.00; GOOD AND CHOICE 1-3 40-60 LBS. 70.00-85.00; 60-100 LBS. 70.00-75.00.  
SLAUGHTER EWES: GOOD AND CHOICE YEARLINGS AND 2-YEAR-OLDS 35.00-55.00. UTILITY AND GOOD 1-3 20.00-38.00.  
GOATS: BY THE HEAD, LARGE BILLIES 100.00-130.00, FEW UP TO 150.00, MED. 75.00-100.00; CHOICE AND PRIME MUTTON 70.00-85.00; LARGE NANNIES 50.00-75.00, MED. 30.00-50.00; CHOICE AND PRIME YEARLINGS 50.00-70.00; CHOICE AND PRIME KIDS 30.00-55.00, GOOD 15.00-30.00.

**Westminster Livestock Auction**

Hagerstown, Md.  
July 27, 1999

Report supplied by auction  
SLAUGHTER COWS: 151 HEAD, \$1.00 LOWER. UTILITY 35.00-39.50; HIGH DRESSING 40.00-42.00; CANNERS 31.00-35.00, LIGHTWEIGHTS 26.00-30.00; SHELLY 30.00 DOWN.  
BULLS: 13 HEAD STEADY. YG#1 1780 LBS. AT 52.00; YG#2 1000-1500 LBS. 41.00-47.00.  
FED STEERS: NONE.  
FED HEIFERS: 24 HEAD 1.50 LOWER. HIGH CHOICE-PR. 1100-1400 LBS. 64.00-66.75; CHOICE #2&3 1050-1400 LBS. 61.00-64.25; LOW CHOICE HOLSTEIN 1200-1450 52.00-54.00; LOW DRESSING 52.00-54.00.  
FED HEIFERS: 13 HEAD. HIGH CHOICE 100-1200 LBS. 62.00-65.25; LOW CHOICE 900-1050 LBS. 55.00-60.00.  
CALVES: 190 HEAD. CHOICE 200-350 LBS. 70.00-84.00; GOOD 160-250 LBS. 60.00-72.00; CULLS 85-120 LBS. 24.00-29.00, FEW TO 35.00, 60-85 LBS. 15.00-25.00.  
FARM CALVES: HOLSTEIN BULLS #1 84-120 LBS. 95.00-112.00, FEW TO 122.00, 88-94 LBS. 60.00-90.00; #2 90-115 LBS. 40.00-85.00, 82-90 LBS. 30.00-45.00. HOLSTEIN HEIFERS #1 90-120 LBS. 195.00-245.00, 75-90 LBS. 115.00-190.00; #2 80-110 LBS. 90.00-180.00; BEEF X BULLS 72.00-111.00; BEEF X HEIFERS TO 102.00.  
BUTCHER HOGS: #2&3 24-290 LBS. 27.00-28.00, ONE 312 LBS. AT 24.50.  
STOCK CATTLE: 215 HEAD. STEERS MED. AND LARGE FRAME 200-400 LBS. 75.00-99.00, 400-600 LBS.

72.00-86.00, 600-800 LBS. 60.00-70.00, 800-950 LBS. 54.00-62.00.  
HEIFERS: MED. AND LARGE FRAME 200-400 LBS. 75.00-86.00, 400-500 LBS. 65.00-80.00, 500-700 LBS. 60.00-70.00, 700-950 LBS. 55.00-62.00.  
SHEEP: 21 HEAD. 25.00-35.00; FEW TO 36.00-43.00.  
LAMBS: 89 HEAD. HIGH CHOICE-PR. 90-110 LBS. 69.00-75.00, 110-125 LBS. 60.00-71.00, 80-90 LBS. 74.00-85.00, 60-80 LBS. 75.00-105.00, 40-60 LBS. 85.00-105.00.  
GOATS: 46 HEAD. LARGE 50.00-89.00; MEDIUM 35.00-55.00; SMALL 20.00-35.00.  
PIGS AND SHOATS: 42 HEAD. BY THE HEAD 20-35 LBS. 11.00-21.00; 35.00-50.00 13.00-18.00.

**St. Louis Cattle, Hogs**

Springfield IL  
Mon Jul 26, 1999

USDA-IL Dept Ag Market News  
Farmers Livestock Marketing Association  
Greenville Illinois  
Receipts this week: 100 Last week: 100 Last year: 100  
Compared to last week, limited supply of all classes steady.  
SLAUGHTER STEERS: Few Choice 2-4 975-1150 lbs 62.00-64.00. Select and Choice 2-3 925-1175 lbs 59.00-62.00. Select 2-3 900-1150 lbs 56.00-59.00.  
HOLSTEIN STEERS: Absent  
SLAUGHTER HEIFERS: Choice 2-4 925-1100 lbs 62.00-64.00. Select and Choice 2-3 850-1075 lbs 59.00-62.00. Select 2-3 825-1050 lbs 56.00-59.00.  
SLAUGHTER COWS: % Lean Weight Price Breakers 75-80% 850-1200 lbs 36.00-38.00 Boners 80-85% 850-1200 lbs 38.00-39.00 High Yielding Boners 80-85% Over 1100 lbs 39.00-40.00 Lean 85-90% 850-1200 lbs 34.00-36.00 85-90% 750-850 lbs 30.00-34.00 85-90% Under 750 lbs 28.00-30.00  
COWS: Cutter, Breaking and Boning Utility 1-4 36.00-39.00. High Yielding 39.00-41.00. Canner and low Cutter 1-2 32.00-36.00. Shelly Canner 1-2 28.00-32.00.  
BULLS: Yield Grade 1-2 1250-1700 lbs 43.00-48.00.

**Friend's Stockyard Inc.**

Accident, Md. 21520  
Report Supplied by Auction  
Mon., July 26, 1999

STOCK BULLS AND STEERS (200-500 LBS.) 50.00-83.00.  
STOCK HEIFERS: 36.00-74.50.  
SLAUGHTER STEERS: GOOD TO CHOICE 61.00-66.50; MEDIUM TO GOOD 50.00-60.00, HEAVY CHOICE OVER 1450 LB. 50.00-62.00.  
HOLSTEIN STEERS: HEAVY CHOICE 40.00-52.00, LIGHT 35.00-46.50.  
SLAUGHTER HEIFERS: GOOD TO CHOICE 60.00-64.25; MEDIUM TO GOOD 45.00-62.00.  
BULLS: HEAVY 41.00-51.75, LIGHT

38.00-54.00.  
COWS: UTILITY (HOLSTEIN) 36.50-40.25, COMMERCIAL TO GOOD 28.00-36.50, CULL COWS 28.00 AND DOWN.  
VEALS: GOOD TO CHOICE 50.00-80.00, MEDIUM TO GOOD 20.00-47.00.  
BOB CALVES: 30.00 AND DOWN.  
HOLSTEIN BULL CALVES — RETURN TO FARM (90 TO 120 LB.)-UP TO 112.00.  
HOLSTEIN HEIFER CALVES — RETURN TO FARM (90 TO 120 LB.)-UP TO 225.00.  
BEEF CROSS CALVES — RETURN TO FARM UP TO 111.00.

**Morrison Cove Produce Auction**

Roaring Spring, Pa.  
July 27-29, 1999

Report Supplied By Auction  
APPLES: LODI 2.50-3.00 1/2 BU.  
BEANS: GREEN 10.00-12.00 1/2 BU; YELLOW 9.25 1/2 BU.  
BLACKBERRY 2.40 QT.  
BLUEBERRIES: 12.00-14.00 FLAT.  
CABBAGE: 4.00-6.50 LBS.  
CANTALOPES 45-75.  
CHERRIES: SWEET: 7.00-8.25 FLAT.  
CUCUMBER: 2.00-5.00 BU.  
EGGPLANTS: 3.00.  
GARLIC 1.00 QT.  
ONIONS: SPANISH 8.25-10.75 1/2 BU.  
PEACHES: 8.50-9.50 1/2 BU.  
PEPPERS: GREEN, SMALL, LARGE 4.25-5.50 1/2 BU.; HOT 3.50-5.00 1/2 BU.  
PICKLES: 3.50-6.00 1/2 BU.  
PLUMS: 6.00-8.00 FLAT.  
POTATOES: RED 3.25-5.25 1/2 BU., WHITE 3.00-5.00.  
RED BEETS: 8.00-10.00 1/2 BU.  
SQUASH: SUMMER 1.00-3.00.  
SWEET CORN: .65-2.85 DOZEN.  
TOMATOES: RED, SMALL-LARGE 8.00-14.00 10 LB.  
ZUCCHINI: GREEN 2.00-3.00 1/2 BU.

**Pennsylvania Livestock Auction**

Waynesburg, Pa.  
Thursday, July 29, 1999

Report Supplied By Auction  
CATTLE: SL COWS: UTILITY & COMMERCIAL 34.00-39.00; CANNER & BONING UTILITY 30.00-35.50; CANNER & LOW CUTTER 28.00-30.00; SHELLS 25.00 & DOWN. BULLS: YIELD GRADE 1 1500#-2000# 42.50-51.75; YIELD GRADE 2 1000#-1400# FAT 37.00-41.00.  
FEEDER STEERS: M&L-1 300-500# 55.00-95.00; 250-280# 54.00-102.00, M 600-900 LBS. 40.00-73.00. HEIFERS M 1&L-1 300-500# 42.00-90.00; L-1 400-650# 42.00-73.00. BULLS M&L-1 300-620# 45.00-94.00.  
CALVES: VEAL: PRIME 68.00-78.00; CHOICE 38.00-70.00; GOOD 35.00-60.00.  
FARM CALVES: #1 HOLSTEIN BULLS 90-120# FEW 35.00-75.00; #2 HOLSTEIN BULLS 80-100# FEW

20.00-40.00; BEEF X BULL&HFRS./HD. 20.00-115.00.  
HOGS: BARROWS & GILTS #1-2 210-255# 26.00-32.00; #2-3 255-280# 26.00-32.00; SOWS #1-3 300-500# NONE AVAILABLE.  
FEEDER PIGS: 1-3 15-20# 5.00-17.00/HD.; 1-3 25-35# 10.00-21.00/HD.  
LAMBS: HIGH CHOICE 80-100 LBS. 50.00-74.00; CHOICE 40-75 LBS. 50.00-71.00; FEEDER LAMBS GOOD 60.00-71.50; SHEEP 18.00-29.00; FAT SHEEP 18.00 & DOWN.  
GOATS: LARGE 35.00-105.00/HD.; MEDIUM 20.00-41.00/HD.; SMALL 10.00-19.00/HD.  
HORSES: 35.00-63.50; PONIES 20.00-50.00.

**Jersey Shore Livestock Market, Inc.**

Auction Every Thursday  
At 4:00 p.m.

Jersey Shore, Pa.  
Report Supplied By Auction  
Thursday, July 29, 1999  
RETURN TO FARM CALF: 60.00-265.00.  
GOOD VEAL: 30.00-59.00.  
COMMON VEAL: 5.00-29.00.  
CHOICE STEERS: 62.00-65.50.  
SELECT STEERS: 58.00-61.00.  
COMMON STEERS: 53.00-57.00.  
COMMERCIAL COWS: 35.00-41.00.  
CANNERS-CUTTERS: 30.00-34.00.  
SHELLS: 25.00-29.00.  
CHOICE HEIFERS: 60.00-63.00.  
SELECT HEIFERS: 55.00-59.00.  
COMMON HEIFERS: 42.00-54.00.  
GOOD FEEDERS: 60.00-65.00.  
COMMON FEEDERS: 44.00-59.00.  
BULLS: 41.00-45.00.

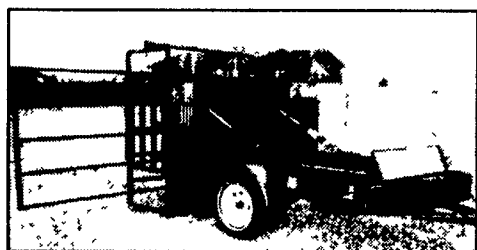
**Jersey Shore Livestock Market, Inc. Hay Report**

Auction Every Thursday  
At 2:00 p.m.

Jersey Shore, Pa.  
Report Supplied By Auction  
Thursday, July 29, 1999  
ROUND BALES 31.00 EA.  
SQUARE BALES: 1.80 BALE.

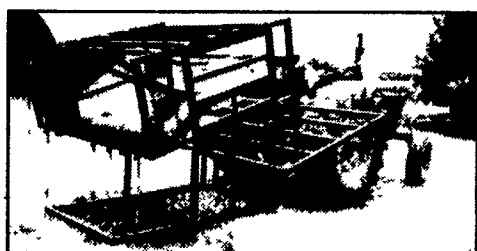
**HEAVY DUTY HOOF TRIMMING TABLES**

Endorsed by the International Hoof Trimming School of Wisconsin



- 2 10-inch lift belts
- 3500 lb axle with or without brakes

- 12-year building experience in the tables design
- 2"x2" tube frame chute
- chute measures 75"x28"x75" high
- 4" casters for cradle fold-up
- Two hydraulic cylinders for extra stability
- tool box for D.C. pump and battery protection
- manure grate to keep work area clean



- fold away side gate
- removable head board
- 45 min video from International Hoof Trimming School of Canada

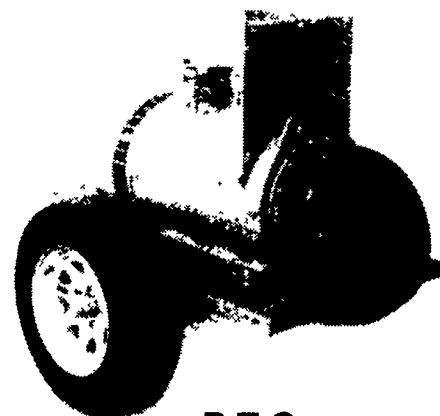
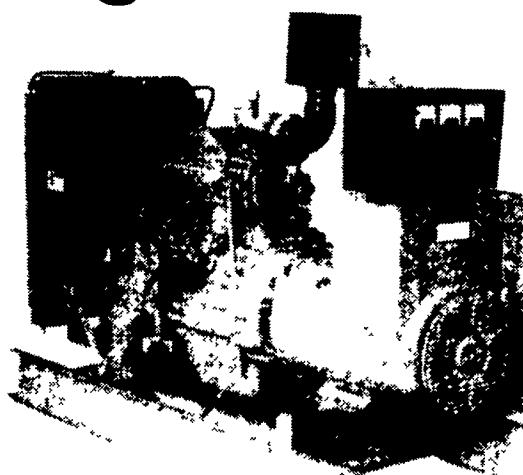
Delivery Available

THREE MODELS TO CHOOSE  
1. PORTABLE 2. STATIONARY 3. 3 POINT HITCH

**BERKELMAN'S WELDING**

RR 7, AYLMEER, ONTARIO, CANADA N5H 2R6  
(519) 765-4230

**Agricultural Generators**



Automatic  
L.P. Gas, Diesel, Natural  
Gas Generators  
5 to 2,000 KW

P.T.O.  
Generators  
25 to 135 KW Units  
In Stock!

Service - Rental - New - Used

**PENN POWER SYSTEMS**

Power Generation Systems Specialists

330 Fonderwhite Road, Lebanon, PA 17042

Call Leonard Martin 717-273-4544  
Fax 717-273-5186