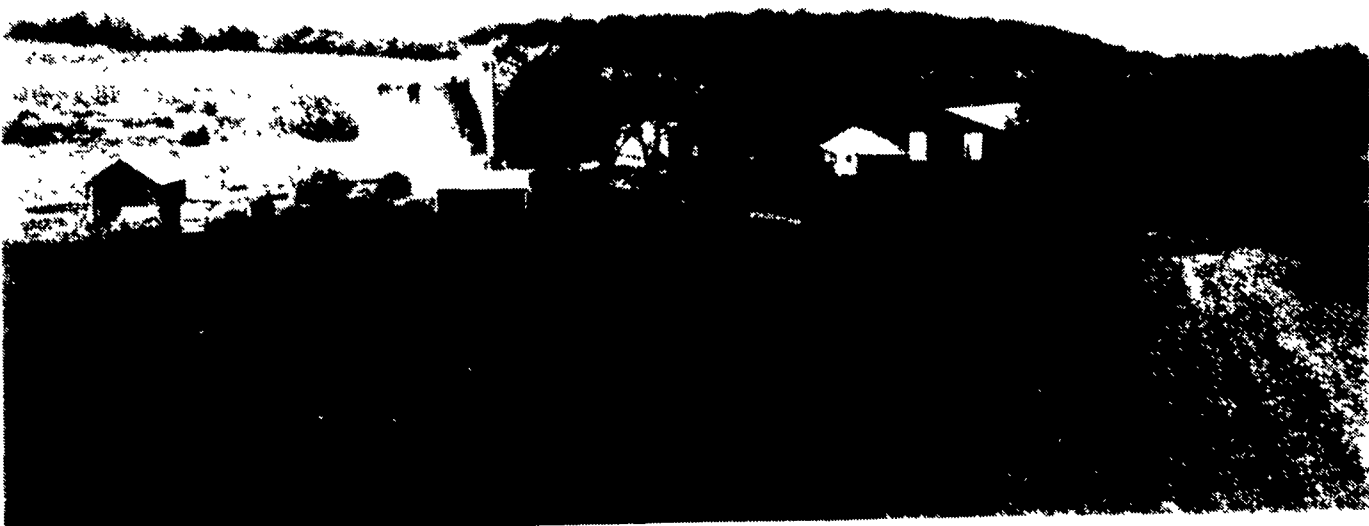
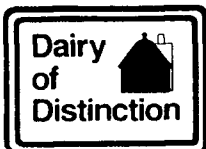


SUSQUEHANNA



Ransomed Ransom Dairy, Nicholson

Levi and LuAnn Ransom have named their new Dairy of Distinction, The Ransomed Ransom Dairy. Located Northeast of Nicholson in Susquehanna County, the farm has been in the family since 1850. They farm 340 acres to raise crops to feed 100 Holstein dairy cows and young replacement stock. The herd average is more than 26,000 lbs. of milk. Their children are Bradley and his wife Jill Ransom, Timothy, and Aaron. The Ransoms have farming as a way of life. Levi has tried other jobs but says farming is what he was born and raised into and it is ingrained into him.



Congratulations

To all this year's winners of
The Dairy of Distinction Award

For over 27 years farmers have relied on Lapps Barn Equipment, Inc. for

- Prompt Service
- Large Inventory of Parts
- Experienced Personnel

We know your dairy business can't wait when repairs are needed. Give us a call.

We also carry a full range of quality barn equipment such as...



With ROTO-MIX IV you reduce fines, minimize shrinkage, and eliminate dead spots. The gentle tumbling action mixes fragile flaked and high-moisture ingredients without grinding, resulting in a fluffier, more nutritional ration.

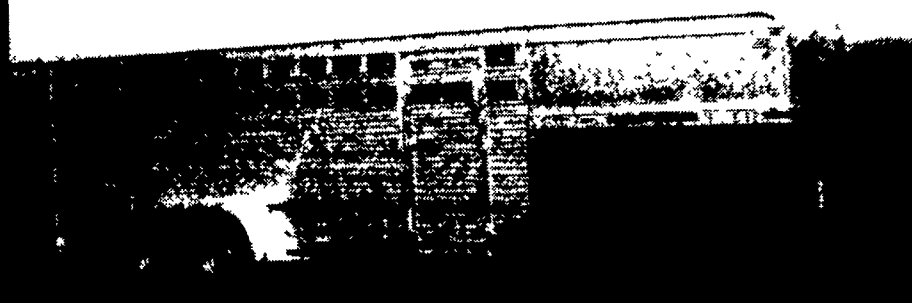
The ROTO-MIX end-to-end... side-to-side mixing system provides the most thorough TMR available, ensuring that your cattle will consume a balanced ration of nutrients in every pound of feed they eat.



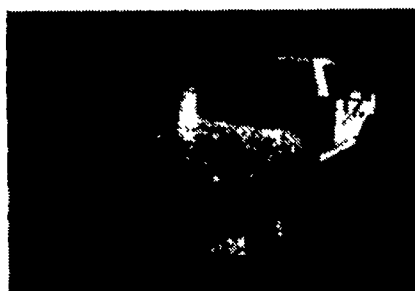
LAPP'S BARN EQUIPMENT
5935 OLD PHILADELPHIA PIKE, GAP, PA 17527
PHONE: 717-442-8134
SALES & SERVICE

Call Jake or Nelson at 717-442-8134 for more information

When agriculture is your life, the equipment choice is EB.Y.

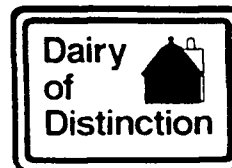


EB.Y. is the leading manufacturer of aluminum bodies and trailers for agri-transportation. Our products are designed for superior strength, reduced weight for greater payload capacity, minimum maintenance and higher resale value. In addition to premium standard features, we offer full custom options built to your specs.



EB.Y.'s complete line includes models for every requirement:

- Gooseneck Trailers - length 14' - 32'; widths 7', 7'6", 8' and 8'6"
- Bumper Hitch Trailers - lengths 12' - 18'
- Grain Bodies - lengths to 24', plus landscape and general purpose dumps to 12'
- Flatbed Bodies - lengths to 32' in 5 widths
- Landscape Bodies - lengths to 12'



Call for FREE Color Literature



Blue Ball, PA
(800) 292-4752