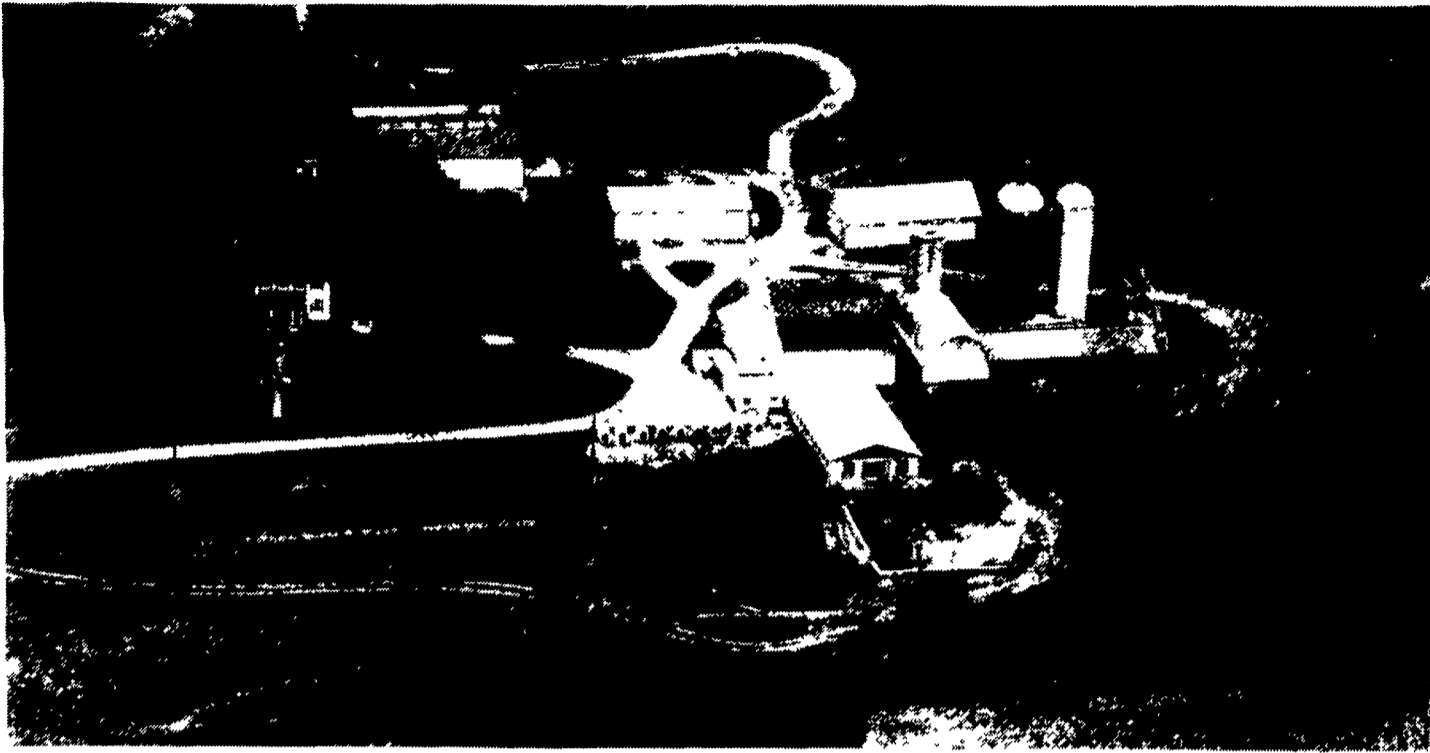


LANCASTER

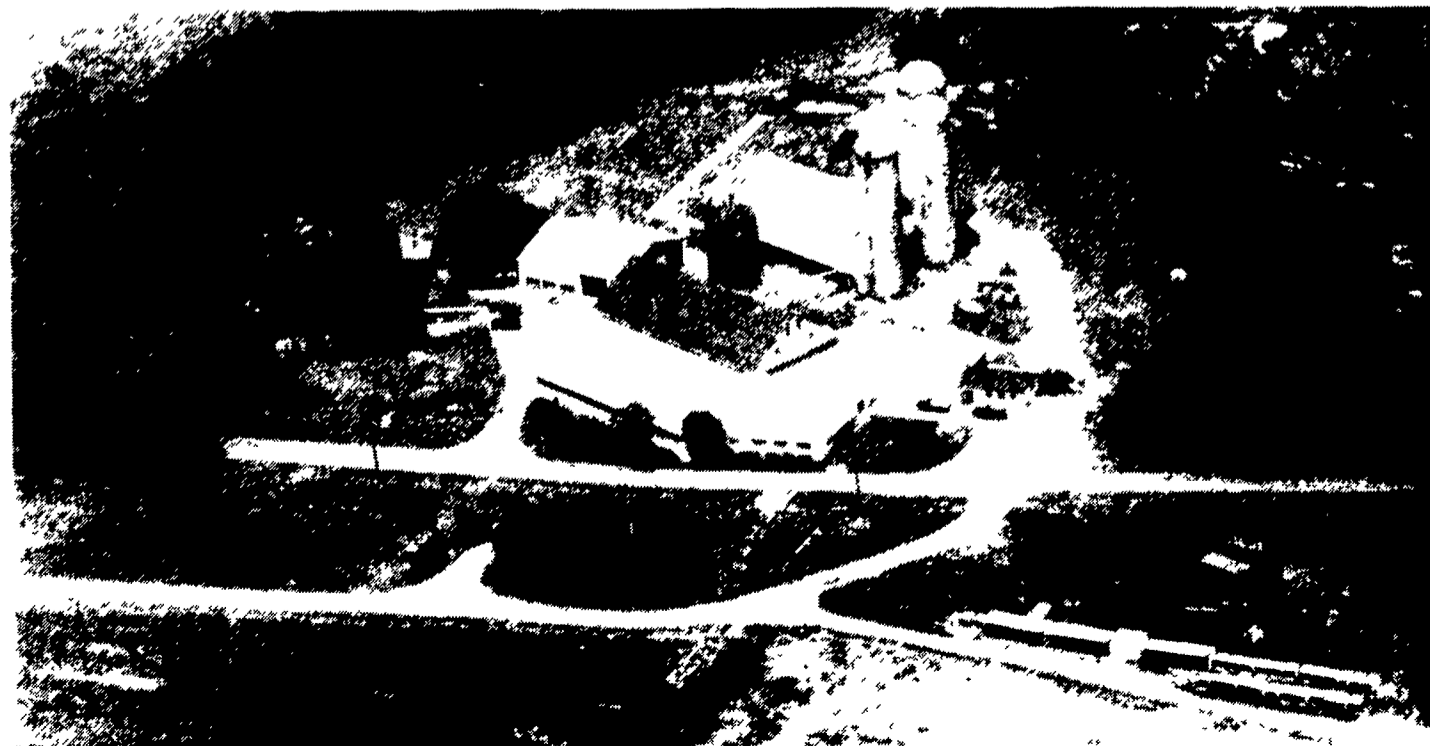
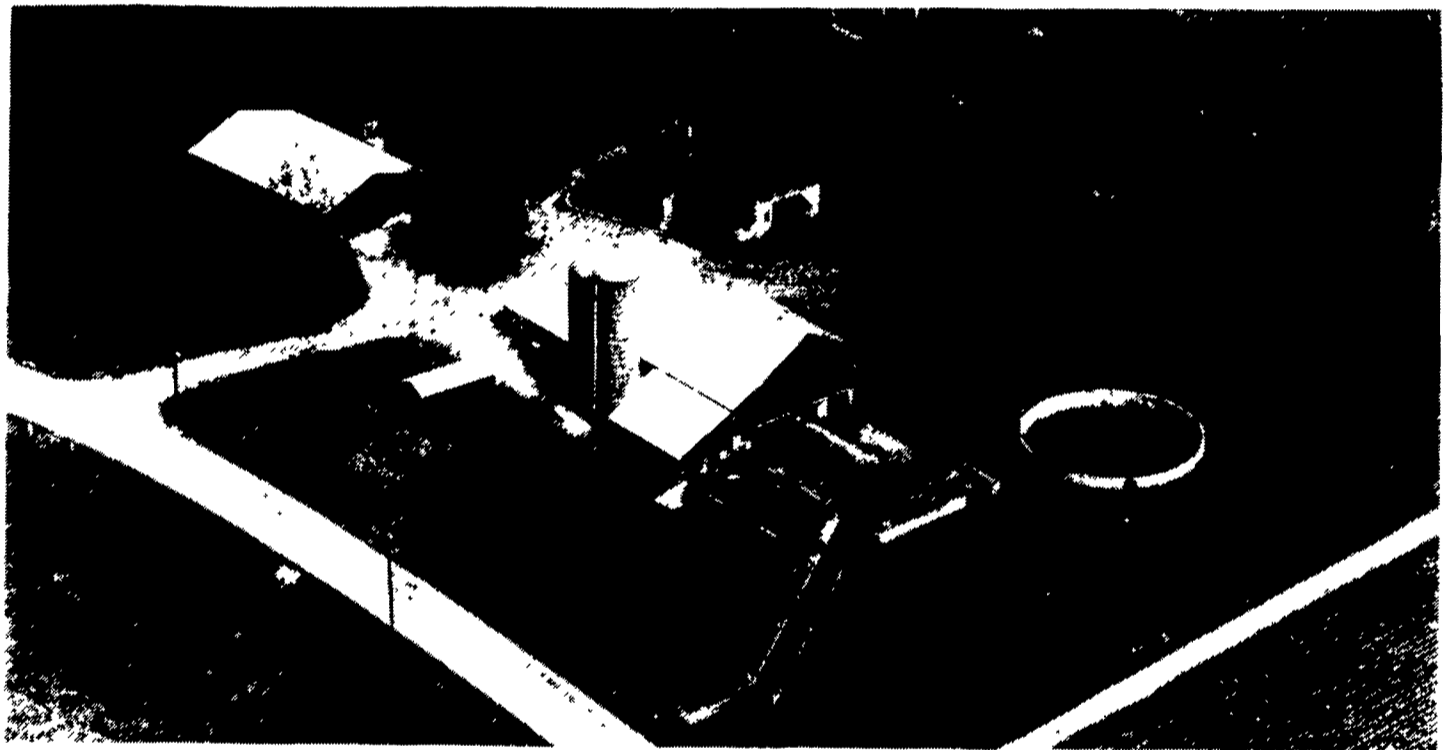


G & S Aument Farm, Quarryville

Glenn and Judy, and Steve and Kathy Aument have the new Dairy of Distinction farm located seven miles south of Quarryville. The farm has been in the family for 33 years. They farm 170 acres with corn and alfalfa as the major crops to feed their 61 milking Holsteins and corresponding young replacement stock. Steve says he really enjoys farming because of the animals, the land, and the freedom from a boss. Steve and Kathy have four children, Jeniffer 7, Matthew 5, Amanda 3, and Andrew 1.

Bart-Dell Farm, Quarryville

The Bart-Dell dairy farm owned by Levi and Sarah Glick is a new Dairy of Distinction in Lancaster County. Located east of Quarryville, The Glicks have owned their 50-acre farm since 1974. They milk 50 registered Holsteins that average 21,800 lbs. of milk. With the limited acreage, Levi said it is important to take care of details, especially in cost control of things you need to buy. The Glick children are Mary 23, Hannah 22, Jonathan 20, Ruth 18, Amos Lee 16, and Elizabeth 13. The Glick family also have a furniture making business at the farm.



Rocky Acre Farms, Mt. Joy

The Dairy of Distinction called Rocky Acre Farm, is owned by Galen and Eileen Benner and farmed by son Arlin and his wife Deborah. They farm 450 acres and milk 360 Holsteins. Arlin took over the dairy cows in 1990. Prior to that Galen had milked cows for 25 years. They have operated a bed and breakfast tourist home at the farm for many years. Galen says the farm is a good place to raise the children, but you must be careful it is not all work and no play. Their farmhouse historically was a stop on the "underground railroad" for the slaves. The Benner boys facetiously claim they were the modern slaves there when they grew up. But they now admit the farm was a good place to grow up, even if they don't want to farm.