



JULY 26-AUGUST 1, 1999

FULL THUNDER MOON, JULY 28.

**AUGUST 1 IS LAMMAS DAY**

From the Old English word for "loaf" and "mass," Lammas was originally the day to bless the first grains of harvest. As often happens over time, however, the word was later confused with "lamb" and "mass," and newborn lambs were brought to the church for blessings, as well. In a similar vein, we recently heard of a New Hampshire farmer who refers to his cosseted lambs (those needing extra pampering or bottle feeding) as "corseted," which gives quite a different (but still lovely) picture. Spare the roast lamb, cosseted or trussed, from this feast, however. Oatcakes and seaweed puddings are traditional fare.



*After Lammas, the corn ripens as much by night as by day.*

**The OLD FARMER'S WEATHER PROVERBS**



*Seaweed becomes damp and expands before wet weather.*

*Trout bite voraciously before a rain.*

*Observe on what day in August the first heavy fog occurs, and expect a hard frost on the same day in October.*

**TIP OF THE WEEK**

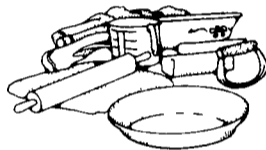
Close the windows and pull down the shades early in the morning to keep the house cool.

**COMPANY OATCAKES**

- 5 cups rolled oats
- 1 cup (2 sticks) butter, softened
- 1 cup condensed milk
- 1/4 cup fresh orange juice
- pinch of salt

dough begins to shrink from edge of pan. Remove from pan and cut into squares or wedges, then place onto a greased cookie sheet. Reduce heat to 275° and bake another 10 to 15 minutes, until golden.

Makes 16 to 24 pieces.



www.almanac.com

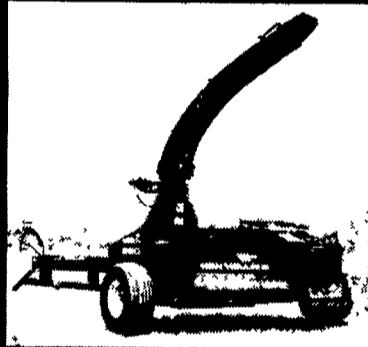
**United Feature Syndicate**

(Printed in the U.S.A.)

200 Madison Ave  
N.Y., NY 10016  
(212-293-8500)

**Now! Process Silage with your New Holland Harvester Increase Profits & Reduce Feed Waste**

with the new Georgetown Kernel Processor Conversion Kit



- Adjustable 8 1/2" x 22" hardened steel rolls which turn at different speeds, more thoroughly breaking kernels

- Remove floor pan to make haylage with the same unit.

**Georgetown Manufacturing Co.**

343 Christiana Pike, Christiana, PA 17509 • 610/593-2753

• Call Today for More Information



For Installed

**STANDING SEAM ROOFING**

contact

**STRICKLER METAL**

**ROOFING**

**717-865-3093**

**or 610-488-9303**

Specializing in double crimp standing seam

Available In

20 + prefinished Colors

Galvalume - Galvanized - Tern - Etc.

FREE ESTIMATES

Work Approx. 60 Miles Radius of Lebanon, Pa.

RD #2 Box 350-A Annville, PA 17003

**Westminster Livestock Auction**

Hagerstown, Md.

July 20, 1999

Report Supplied By Auction

SLAUGHTER COWS: 139 HEAD, 2.00 LOWER. UTILITY 36.00-40.50; HIGH DRESSING 41.00-44.75; CANNERS 31.00-35.00, LIGHTWEIGHTS 27.00-30.00; SHELLY 29.00 DOWN.

BULLS: 10 HEAD. YG#1 1260 LBS. AT 50.75; YG#2 1100-1200 LBS. 43.00-47.50.

FED STEERS: 34 HEAD, 1.00 LOWER. HIGH CHOICE TO PRIME 1150-1400 LBS. 65.00-68.00; 11596 LBS. AT 64.25; CHOICE #2-3 1200-1475 LBS. 63.00-65.75; HIGH CHOICE TO PRIME HOLSTEINS 1300-1500 LBS. 57.50-59.25; CHOICE HOLSTEINS 1050-1450 LBS. 53.00-56.00.

FED HEIFERS: 12 HEAD. HIGH CHOICE 1000-1300 LBS. 64.00-66.25; CHOICE 900-1050 LBS. 60.00-63.00.

VEAL CALVES: 152 HEAD. CULLS 85-110 LBS. 25.00-32.00, 60-85 LBS. 17.00-25.00.

FARM CALVES: HOLSTEIN BULLS 5.00-10.00 LOWER. #1 95-120 LBS. 90.00-112.00; #2 40.00-85.00; 85-95 LBS. 35.00-60.00; HOLSTEIN HEIFERS #1 95-120 LBS. 220.00-245.00; #2 80-95 LBS. 125.00-195.00; BEEF X BULLS AND HEIFERS 50.00-97.00.

BUTCHER HOGS: 39 HEAD, 2.00-3.00 HIGHER. #1&2 235-260 LBS. 33.00; #1&3 220-260 LBS. 31.00-32.00; 200-220 LBS. 28.00-31.00; 265-290 LBS. 26.00-30.00.

SOWS: 10 HEAD. 400-500 LBS. 14.00-18.00; 500-600 LBS. 19.00-21.25.

BOARS: 1 318 LBS. AT 6.75.

STOCK CATTLE: 124 HEAD, STEADY TO HIGHER PRICES. STEERS MED. AND LARGE FRAME 300-500 LBS. 75.00-85.00; 500-700 LBS. 63.00-75.00; 700-900 LBS. 56.00-62.00.

HEIFERS: MED. AND LARGE FRAME 200-400 LBS. 67.00-84.00; 400-600 LBS. 63.00-76.00; 600-800 LBS. 57.00-65.00; 800-1000 LBS. 53.00-59.00.

BULLS: MED. AND LARGE FRAME 300-500 LBS. 69.00-80.00; 500-700 LBS. 63.00-69.00.

SHEEP: 51 HEAD. LEAN 24.00-35.00; FAT 15.00-28.00.

LAMBS: 69 HEAD. CHOICE TO PRIME 100-120 LBS. 73.00-77.00, 80-100 LBS. 75.00-83.00, 70-80 LBS. 84.00-96.00; CHOICE 50-70 LBS. 90.00-111.00, 30-50 LBS. 80.00-90.00; MED. TO GOOD 50-90 LBS. 74.00-85.00; YEARLINGS 40.00-55.00.

GOATS: 108 HEAD. LARGE 65.00-96.00; MED. FLESHY 50.00-60.00; SMALL FLESHY 30.00-48.00; SMALL TO MED. THIN 18.00-40.00.

PIGS AND SHOATS: 67 HEAD. BY THE HEAD, 40-60 LBS. 18.00-27.00; BY THE LB. 4 HEAD 40 LBS. AT 67.00; 15 HEAD 52-57 LBS. 46.00; 5 HEAD 75 LBS. AT 51.00; 3 HEAD 97 LBS. 38.00; 10 HEAD 120-155 LBS. 30.00-36.00; 7 HEAD 130-140 LBS. 41.00-48.00.

**New Holland Sales Stables**

Report Supplied By USDA

Tuesday July 19, 1999

	Calves	Sheep	Goats
Today	197	978	1184
Last Week	293	893	1255
Last Year	237	992	839

CALVES: COMPARED TO THURS.'S AUCTION, VEALERS SOLD 4.00-6.00 LOWER IN A LIGHT TEST. SLAUGHTER CALVES TRADED FULLY STEADY. HOLSTEIN BULLS RETURNING TO FEED SOLD 12.00-15.00 LOWER ON LIGHTER DEMAND. HOLSTEIN HEIFERS WERE ONLY LIGHTLY TESTED.

VEALERS: GOOD AND CHOICE 70-110 LBS. 18.00-22.00. STANDARD AND LOW GOOD 60-90 LBS. 11.00-18.00.

SLAUGHTER HEIFERS: GOOD AND CHOICE 200-350 LBS. 85.00-95.00; 350-550 LBS. 55.00-85.00. STANDARD

300-600 LBS. 45.00-65.00.

RETURNED TO FARM: HOLSTEIN BULLS 95-125 LBS. 75.00-97.00. PLAINER TYPE BULLS 80-115 LBS. 40.00-65.00. FEW HOLSTEIN HEIFERS 80-120 LBS. 202.00-235.00.

SHEEP: COMPARED TO THURS., SLAUGHTER LAMBS UNDER 75 LBS. SOLD 2.00-5.00 LOWER, HEAVIER WEIGHTS TRADED STEADY. SLAUGHTER EWES WERE 3.00-5.00 HIGHER.

SLAUGHTER LAMBS: CHOICE AND PRIME 2-3 40-75 LBS. 80.00-95.00; 75-100 LBS. 75.00-85.00; 100-130 LBS. 65.00-75.00. GOOD AND CHOICE 1-3 40-75 LBS. 70.00-80.00; 75-100 LBS. 65.00-75.00.

SLAUGHTER EWES: GOOD AND CHOICE YEARLING AND 2 YEAR-OLD 35.00-55.00. UTILITY AND GOOD 1-3 20.00-38.00.

GOATS: BY THE HEAD, LARGE BILLIES 100.00-135.00, MED. 75.00-100.00; CHOICE AND PRIME MUTTON 75.00-100.00; LARGE NANIES 60.00-75.00, MEDIUM 40.00-60.00; CHOICE AND PRIME YEARLINGS 50.00-75.00; CHOICE AND PRIME KIDS 30.00-60.00, FEW UP TO 65.00, GOOD 20.00-35.00.

**New Holland Horses**

New Holland Sales Stables

New Holland, Pa.

Monday, July 19, 1999

Report Supplied By Auction

203 HEAD. MARKET LOWER. WORK HORSES 985.00-1475.00. DRIVING HORSES 485.00-1300.00. RIDING HORSES 485.00-1125.00. FEW 1200.00-1500.00.

PONIES 145.00-400.00.

LARGE PONIES 450.00-510.00.

COLTS 145.00-385.00.

**MILK WANTED**

Lanco Dairy Farmers Co-Op Inc. needs 200 more dairy farmers to help grow out new contracts. We are run by a local non-salaried board. We do not take equity out of your check. We have 4 excellent local haulers.

**Cost? 1¢/cwt**

Let us show you how to take control of your milk supply with a better bottom line.

For more information,

call (410) 658-7532

**TIRED OF BENDING OVER TO MILK?**

Reduce fatigue and time spent milking! Put a Kipe 'Max Effective' to work on your farm. One person can milk 80+ cows per hour. Use a Double 8 Space saver parallel, hi-speed exit, priority gates and vertical lift crowd gate to make your chores more manageable.

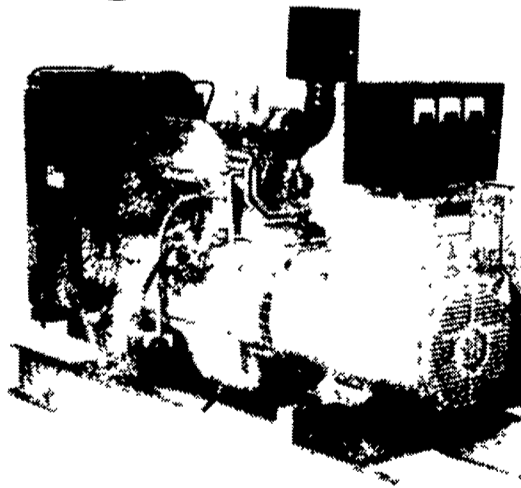
**'MAX-E' PACKAGE DISCOUNT 10% - LEASE \$885 MO.**

Call for Free color literature.

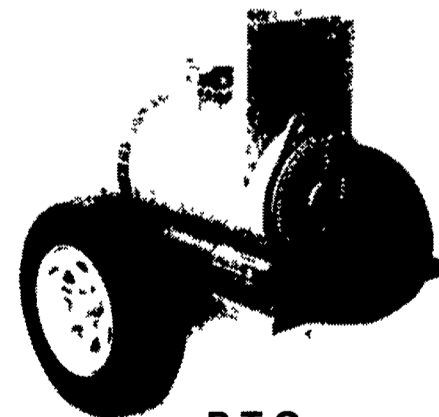
ASK FOR WILL GODWIN, KIPE STEEL, INC.

800-432-4797

**Agricultural Generators**



Automatic L.P. Gas, Diesel, Natural Gas Generators 5 to 2,000 KW



P.T.O. Generators 25 to 135 KW Units In Stock!

Service - Rental - New - Used

**PENN POWER SYSTEMS**

Power Generation Systems Specialists

330 Fonderwhite Road, Lebanon, PA 17042

Call Leonard Martin

**717-273-4544**

Fax 717-273-5186