

27 PETS

PUPS WANTED in litter lots Call when pups are 4 weeks old... CASH PAID No pups over 8 weeks old wanted... Call Jo Jo 609-452-9291

For sale: Fiberglass carriage in good cond. 717-687-8411.

Bridge Crane, 5/Ton, Single Girder Top, Running 45', 3' Span \$5,500. (717)354-3105.

FOR SALE: New & Used desks, files, chairs, fireproof files, etc. NOLT'S, Ephrata, PA 717-859-1617.

PAYING UP TO \$2.50/sq.ft. for wide walk-smooth attic floor. We remove. Also, paying \$.50-\$1.00 for pine and oak siding 1" & thicker. 800-765-3966.

Coolant: water soluble machining coolant, synthetic & regular. \$6/gal., retails for \$18/gal. 717-354-3105.

Koi R-U's Fish Farm Quality colorful Koi to beautify your pond All sizes All patterns 215-536-6076

1992 Superior Steam Boiler, 80 Hp Natural Gas Fired Burner, Complete with Condensate System, Good Condition - Inspected Yearly \$5,000 717/626-2074 Gary Varner

WANTED Chestnut Need Thousands of s f Monthly Original House Floors COOK'S ANTIQUE LUMBER CO. TIM COOK 231 Baldwin Hill New Preston, CT 06777

32 MISCELLANEOUS

Steam Boiler Power Master mfg. by Orr & Sembower 200 hp boiler, 6,695,000 BTU per hour, 1960 model \$10,000 obo 610-268-8258

32 AUTOS

'94 Dodge Caravan, 7 passenger, V6, auto, PS, PB, roof racks, dark blue w/gray interior, 81K, v. clean. 717-867-1201

1989 Ford L8000, 7.8L Ford diesel, 240hp, Eaton Fuller FS 6106 trans, runs good, \$12,000. Matt, ext 118, 908-359-5501.

'80 Buick diesel SW, good work vehicle. 724-238-5790

Chevy wagon, '82, odometer broke at 56,000K, no rust, running, good paint, needs inspection, first \$300. Call Mrs M, 610-358-2731.

'86 Chevy conversion van, loaded, exc. running. 215-536-8624.

1965 Ford Mustang, auto, ex. original cond. 814-274-9388

CHEVY'S, FORD'S, etc. Cars and trucks. Over 300 vehicles. Every Monday 6:30pm. PUBLIC AND DEALERS. YORK SPRINGS PUBLIC AUTO AUCTION, Rt 15, York Springs, PA 1-800-222-2038.

35 TRUCKS AND TRAILERS

1979 Ford F600, tilt cab, only 4000 original miles, former United Airlines, 370 gas, Allison auto, 24,000 GVW, first \$2500 takes it. 570/758-9132.

1996 Pequea Trailer, 16' (14' w/2' Dove Tail) Deck Over Wheels Elec. Brakes, 10,000 GVW, Like New \$2150. 610-367-7059.

76 Int. Fleetstar 2050, 52,000 GVW, 20' alum. dump bed w/sideboards and tailgate, 13 speed, DT466 300hp., only 180,000 orig. mi., great shape, inspected and ready to go. Call John 610-593-9937.

87 Peterbilt, cab & chassis, rebuilt 8.3 cummin, 6 speed. \$11,500 (717)626-1394.

1989 Trailmobile flatbed, 48-102, vg condition, \$4500. 717-534-1253

86 F150, 4x4, 302, 4 speed, 126,000 miles, runs excellent, dependable \$2,500 OBO 717-933-4867.

89 Int. carp 72 pass. bus DT360, 6 spd., air, new insp. 7/99 \$4,000. 85 Ford Wayne 72 pass., 429 gas, 5 spd., hyd., new insp., 7/99 \$1,300 Joe Foust 570-673-8304.

1995 Ford LTL 9000, 19 1/2 Alum Bed, 3rd Axle, 460 Cummins, 8LL Trans, 235K Mi. Loaded w/Extras! Warranty Remaining. \$68,000. Owner Has Other Interests. 814-267-5108.

87 Ford F250 pickup, 4wd, 351 EFI, auto, PS, PB, 92,000 miles, good farm truck, asking \$4,500 OBO 301-739-8938.

WANTED: Aluminum livestock trailer, good condition, w/bumper hitch. 570/523-3671.

1931 Ford Model A truck, original cond, runs good, \$4000. 717-624-9715

18 ft. flatbed dump body, heavy duty, w/telescoping cylinders, & bulk head, excel cond. \$2200. Concrete block body w/sliding crane, \$2200. 570-897-9090

22 ft. flatbed w/10 ton hoist. 610-857-5515

1990 pickup Silverado, 2-tone brown, electric wind/locks, 350 eng, 3spd OD auto, 2WD, 80,000 mi, A/C, exc cond, \$6,500. 215-322-5847.

1971 IH dump truck, 11,000 GVW, V8, 5spd, \$1,995 OBO. 717-867-1201.

1990 Moritz stock trailer, 12 ft. good cond, \$1500. 814-274-9388

For Sale: 2 TK Sentry reefer units, 402A refrigerant, \$3200. Call 717-949-2211

1996 Eby tapered nose Wrangler 20' trailer, interior lights, backup lights, center gate, escape door, full rear gate w/cattle gate, plexiglass sides, \$11,500. 717/624-8224 after 8pm.

GMC S15 ext cab, 4x4, 2.8L, V6, 154K, 5spd, \$2500 obo. 610-832-1320

1974 Chevy C60 cab, & chassis, 5 spd, sm block, V8, \$1200 obo. 1976 Int. 1600 V8, 5+2, 14 ft grain body dump w/blower, \$2250 obo. 814-643-3211 8am-6pm 814-643-5295 after 6pm

1996 Freightliner day cab, 140k, 290, 9spd, 12-40 axles, air ride cab, \$22,900. 717-933-8943 Myerstown

1978 Int'l diesel Tanden axel GRVW 55,000 Prentice unloader for brick or pallet 18' steel body \$8,500. M-F 9-5, 301-253-2272

18 ft. aluminum dump box, 75 inch sides, barn door gate, roll tarp, \$4000. 22 ft. Morgan reefer box, diesel, Thermoking, nice shape, \$4000. 1-800-839-3338

76 Mack triaxle dump truck, new engine, overhaul, \$16,000 (570)672-9662 or (570)672-2314.

1979 CAT loader, 955L, good cond. \$20,000. GAL-LON roller 4-6 ton, good cond. \$800. 1969 WHITE tank truck, Cummins eng, stainless tank, 2200 gal, Gorden Rupp pump, 4 cyl. Wisconsin eng. \$8,500. 1989 FORD 350XLT Utility truck, Reading Bed Blue, low miles \$9,500. 1978 CORVETTE; white/blue interior, 350 eng. auto; good cond. \$6,100. 717-225-1888

1989 Chevy van, auto, V-6, 90,000 ml, new inspection, good cond, \$5,000. 717-367-8777.

Truck Wanted: 18,000-21,000-26,000 GVW, "gas", low mileage, must be in VG condition, LancCo, 717-898-8741.

1988 C70 Chevy Detroit dsl, new 13' dump bed, only 74,000 mi, \$10,000 OBO. 717-469-0712.

1969 White w/16' grain body, air brakes, w/twin cylinder dump, VG condition, \$5,000. 302-398-8754.

32 MISCELLANEOUS

60hp Ingersol Rand air compressor, good condition; 20hp Quincy air compressor, 2 years old; woodworking equipment: belt sanders, pin routers, clamping tables. Please call for details. 215/723-0540.

Inventory of hardware store from early '70's. Must take all, priced to sell. 717-463-9562.

Brunner condensing receiver MODA100FC, 20 years old, never used, 3 phase 1horse motor, \$500 OBO. 717/534-1495.

Handhewed, 18ft. rafters; 12'x12", 6'x6" barn boards, attic boards; best offer 610-285-2611.

(2) used waste oil burners, Beckett, \$1000/pair. 800/774-3707.

24" 4-sided planer \$1,500. 24" jointer \$1,250. 1,000lb dial platform scale \$950. Pallet jack \$212. Hospital bed. 570-286-5306.

1951 Chev farm truck, like new cond, \$3,200 cash. NH tractor w/blade \$2,800 cash. Farmall Cub \$2,500 cash. 1984 Caddle \$4,900 cash. Landpride 60" mower \$1,100 cash. Call early morn or eve 570-588-6350.

Bird Cage 48x48x96, 48x84 door, 1/4x1/4 galv screen, false bottom, easy clean, plexiglass shelving, sturdy, 6man old \$690 sacrifice \$390. 609-268-3871.

21 lighted glass show-cases w/drawers and more. 215-654-9237.

Firewood for sale, 6 cord loads & up. Price depends on delivery or \$80/cord picked up. MONN'S FIRE-WOOD 1-800-782-0945

Foley-belsaw 1055 Sharp-all saw/tool grinder, stand, chainsaw attach. Foley-belsaw 387 auto. saw filer, stand. 2 wax dip tanks, manuals, many other access. \$990 for all or will sell separately. Call after 8pm, 814-224-4520.

25HP Quincy Air Compressor model 4; Web Iron Worker; Approx 100/Ton Press. 11" Beams 12", 8", 24", 18". Call for lengths & weights; 60"x80" Welding Table; Linde Mig Welders 400 Amp; Atello Miter Cold Cut Saw. 717-529-2282. 7:45-8:15am.

Fiasa 8 ft windmill, in new condition, must be removed. 717-761-0765

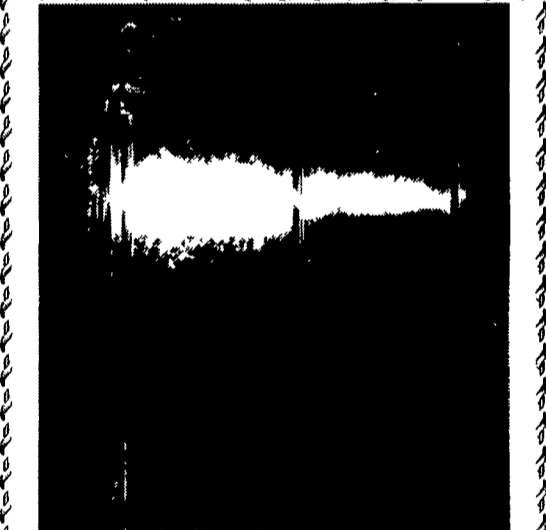
Generators, 4KW to 75 KW, new & used, skid or trailer mount, diesel engines, manual & automatic transfer switches available, 75KW as low as \$8,000. 717-993-5580, 717-927-9766.

Mercuriser 160hp, I/O, engine to outdrive, excel. cond. sell complete or will separate. Easy loader trailer w/elec. winch, \$600. Muncie M-21 4spd trans. 717-266-0823

LIVE GAME FISH Fingerlings and Adults, Large and Small Mouth Bass, Spotted and Rock Bass, Bream Crappies, Trout, Channel Cats, Bullheads, Walleyes, Perch, Minnows, Northern, Pickerel, Muskies, Red Gills, Mullet, Carp, Eels, Turtles Frogs Israeli Carp Also Aquatic Plants and Water Lilies EDUCATIONAL CATALOG \$2 00 Koi Specials Truck, Air and Parcel Post Delivery ZETTS FISH HATCHERIES DRIFTING, PENNA. 16834 Phone: 814-345-5357



Need Storage? Storage Containers For Sale. 20' - \$1,750, 40' - \$2,350 Ideal for Machinery, Grain, Tools, Etc. Free Delivery Within 150 Miles of Philadelphia. 717/426-4919



Victory SS Freezer, New Compressor (717) 292-1150

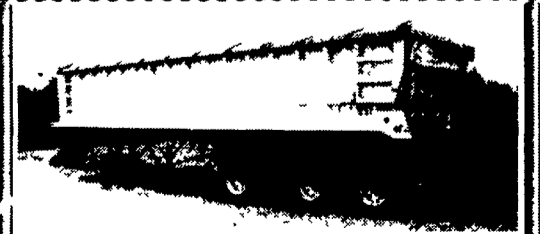
34 AUTOS

BURKHOLDERS AUTO SALES Milton, PA 570-437-3848 Delivery Available

95 OLDS CUTLASS CIERRA SL Black V6, Full Power Opt., 45,000 Miles \$5,995

96 OLDS CIERRA SL SW 3rd Seat, Full Power Opt., 16,000 Miles, Blue, Retail Value \$10,500 Price \$8,550

- 98 Toyota Pickup, 4x4, Auto, w/Air, 43K Mi., Black
95 Ford Windstar Van, Dark Green, 45K Mi., Full Power Options
95 Ford Aerostar, Green, 74K Mi
97 Geo Prism, 14K Mi., \$6,950
95 Monte Carlo Z-34, 25K Mi., Dark Green



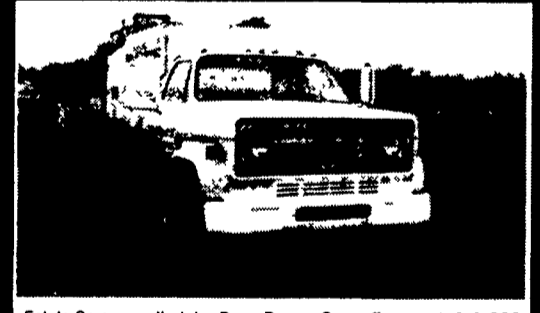
1992 Ravens 36/36 Alum. Frame & Wheels, New SureLock Roll Top, Mint Condition \$29,500 OBO. McGuirk Bros. 410-838-4828 before 9 PM

'85 Ford F350 9' stake body, V-8, power steering, power brakes, AmFm Cassette, A/C, 6 new tires. 102,000 mi, excellent condition \$3,850 OBO (215) 968-1812

FOR SALE 1994 CHEVY 3500 HD Diesel Wrecker \$29,500 Call 717-866-2130 WENGERS

96 Peterbilt 379 Heavy Hauler TRI-AXLE, 475 Cat Eng., Jake Brake; RTLO 16718 18 Speed Trans., 2 Speed Aux., Double Frame, 46,000 # Rear On Chalmers. Will Make Tractor Or Truck, 95,000 Miles New Holland, PA 717-354-3199

1983 International 370 HP, 13 Spd., 4200 Gal. Tank, Recent Overhaul, Excellent Condition, Kept Clean \$19,500 or Best Offer Will Separate Tank at \$4,500 or Best Offer Call (540) 234-9043



Estate Sprayer with John Bean Power Spray Equipment, 1-1,000 gal stainless steel FMC tank, 1-50 gpm 800 psi FMC pump, 1-55 HP Wisconsin eng, 2-elec Hannay hose reels, pressure reg, strainer, spill-proof tank lid Ready to run Mounted on 1983 GMC 7000 12 flatbed, 137,000 miles, 24,500 lbs GVWR, white, vin #1GDJ7D1B5DV503373, \$11,900. Call John Gibbons 717-560-3427 days, or 717-625-2323 after 7 pm, JD Ehrlich, 1107 Enterprise Rd., East Petersburg, PA, Lanc Co



1994 Ford F-700 Single Axle 16' Flatbed Dump, Cummins 175 HP, 6 Speed Trans., PS, 24,500 GVWR, Non-CDL, Spring Suspension, NEW R/S 16' Steel Flat Bed Dump, Telescopic Front Mount Hoist... \$22,500 CURRY SUPPLY CO. Curryville, PA • 1-800-345-2829