

Valley Stockyards

Athens, Pa.
 July 12, 1999
 Report Supplied By Auction
HOLSTEIN HEIFER CALVES:
 150.00-257.50.
BACK TO FARM CALVES: 95-120
 LBS. 70.00-125.00, 70-95 LBS.
 30.00-100.00.
SLAUGHTER CALVES: 8.00-30.00.
**GRASSERS AND STARTED
 CALVES:** 52.50-95.00.
FEEDERS: 42.50-73.00.
LAMBS: 70.00-81.00.
SHEEP: 22.00-31.00.
HOGS: 200-250 LBS., 20.50-25.00.
SOWS: 14.00-15.00.
BOARS: 4.00.
PIGS, EACH: NONE.
HEIFERS: 33.75-45.00.
STEERS: 40.00-47.00.
BULLS: 36.75-47.00.
COWS GOOD: 35.25-41.25.
COWS MEDIUM: 29.75-36.75.
COWS THIN: 15.00-32.00.
CATTLE MARKET: ABOUT
 STEADY.
CALF MARKET: STEADY.
HORSES & PONIES: NONE.
GOATS: 37.50-45.00.
PRICES STILL GOOD.
**FEEDER SALE 1ST MON. OF EA.
 MONTH: DAIRY SALE 3RD THUR. OF
 EA. MONTH, 7:30.**

**Lebanon Valley
 Livestock**

Fredericksburg, PA
 July 13, 1999
 Report Supplied by Auction
**STEERS CHOICE 2-3 1455 LBS. 66.25;
 SELECT 1-3 61.25-63.00.**
**HEIFERS: CHOICE 2-4 1295 LBS.
 65.75; SELECT 1-3 62.00-62.50; STAND-
 DARD 1-2 45.25-46.50.**
**COWS: BREAKERS 75-80% LEAN
 40.25-42.00; BONERS 80-85% LEAN
 38.00-40.00; LEAN 85-90% LEAN
 36.50-37.75.**
**BULLS: YS#1 1510 LBS. 48.25; YG#2
 1040-1680 LBS. 42.50-43.00.**
**FEEDER CATTLE: STEERS BEEF X
 160-280 LBS. 61.00-62.50; HOLSTEINS
 250-321 LBS. 63.00-63.50.**
**CALVES: GOOD 160 LBS. 70.00;
 STANDARD AND GOOD 70-85 LBS.
 40.00-50.00; UTILITY AND GOOD 70-85
 LBS. 25.00-36.00.**
**FARM CALVES: HOLSTEIN BULLS
 #1 95-115 LBS. 90.00-121.00, #2 95-115
 LBS. 62.00-88.00; HOLSTEIN HEIFERS
 #1 90-100 LBS. 185.00-210.00, #2 80-120
 LBS. 97.50-150.00. BEEF TYPE BULLS
 AND HEIFERS 90 LBS. 92.00.**
**HOGS: 40-45% 183 LBS. 29.50;
 US#1-3 440-591 LBS. 20.00-22.00; MED.
 295-417 LBS. 11.50-13.00.**
BOARS: 425 LBS. .06.
GOATS: MED. 35.00-47.00.

**Frederick
 Livestock
 Auction**

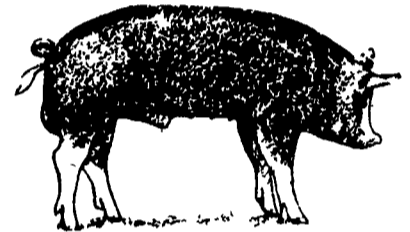
Frederick, Md.
 July 12, 1999
 Report Supplied By Auction
**SLAUGHTER COWS: 95 HEAD,
 50-1.00 HIGHER. UTILITY 39.00-43.00;
 HIGH DRESSING TO 44.25; CANNERS
 34.00-38.50; SHELLY 34.00 DOWN.**
**BULLS: 3 HEAD. YG#2 45.00-48.00.
 FED STEERS: LOW CHOICE
 1000-1100 LBS. 58.00; HOLSTEIN
 CHOICE 1500-1700 LBS. 49.00-50.00;
 LOW CHOICE HOLSTEINS 46.00-48.00.
 FED HEIFERS: 1 HOLSTEIN 1340
 LBS. AT 42.75.**
**VEAL CALVES: 238 HEAD. CHOICE
 210 LBS. AT 75.00; CULLS 85-110 LBS.
 25.00-30.00, 60-85 LBS. 17.00-25.00;
 WEAK/ROUGH 17.00 DOWN.**
**FARM CALVES: HOLSTEIN BULLS
 10.00-15.00 HIGHER. #1 95-120 LBS.
 95.00-109.00; SEVERAL LATE
 110.00-126.00; 90 LBS. 40.00-65.00; #2
 85-95 LBS. 30.00-50.00; HOLSTEIN
 HEIFERS #1 95-120 LBS. 220.00-270.00;
 #2 170.00-210.00; 90-95 LBS.
 127.00-190.00; 80-90 LBS. 115.00-180.00;
 FEW YOUNG 75-90 LBS. 85.00-110.00;
 BEEF X BULLS 70.00-100.00; HEIFERS
 45.00-85.00.**
**BUTCHER HOGS: 33 HEAD, 3.00
 HIGHER. #1&2 240-260 LBS.
 30.00-31.00; #1&3 230-250 LBS.
 29.00-30.00.**
**SOWS: 3400-500 LBS. 16.00-17.00;
 500-600 LBS. TO 21.00.**

**Pennsylvania
 Livestock Auction**

Waynesburg, Pa.
 Thursday, July 15, 1999
 Report Supplied By Auction
**CATTLE: SL. COWS: UTILITY &
 COMMERCIAL 35.00-43.00; CANNER
 & BONING UTILITY 31.00-38.50; CAN-
 NER & LOW CUTTER 28.00-34.50;
 SHELLS 28.00 & DOWN. BULLS:
 YIELD GRADE 1 1500#-2000#
 44.00-54.25; YIELD GRADE 2
 1000#-1400# FAT 34.00-40.00.**
**FEEDER STEERS: M&L-1 300-500#
 55.00-94.00; 250-280# 50.00-101.00, M
 600-900 LBS. 40.00-64.00. HEIFERS M
 1&L-1 300-500# 38.00-81.00; L-1
 400-650# 42.00-73.00. BULLS M&L-1
 300-620# 42.00-90.00.**
**CALVES: VEAL: PRIME 68.00-78.00;
 CHOICE 38.00-70.00; GOOD
 35.00-60.00.**
**FARM CALVES: #1 HOLSTEIN
 BULLS 90-120# FEW 35.00-75.00; #2
 HOLSTEIN BULLS 80-100# FEW
 20.00-40.00; BEEF X BULL&HFRS./HD.
 20.00-115.00.**
**HOGS: BARROWS & GILTS #1-2
 210-255# 26.00-31.00; #2-3 255-280#
 26.00-31.00; SOWS #1-3 300-500# NONE
 AVAILABLE.**
**FEEDER PIGS: 1-3 15-20#
 5.00-17.00/H.D.; 1-3 25-35#
 10.00-21.00/H.D.**
**LAMBS: HIGH CHOICE 80-100 LBS.
 50.00-79.00; CHOICE 40-75 LBS.
 50.00-84.00; FEEDER LAMBS GOOD
 60.00-71.50; SHEEP 20.00-29.00; FAT
 SHEEP 20.00 & DOWN.**
**GOATS: LARGE 35.00-105.00/H.D.;
 MEDIUM 20.00-41.00/H.D.; SMALL
 10.00-19.00/H.D.**
**HORSES: 35.00-63.50; PONIES
 20.00-50.00.**

**Grantsville
 Livestock**

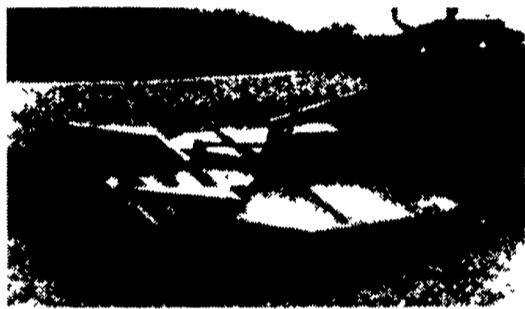
Grantsville, Maryland
 Report Supplied by Auction
 Saturday, July 10, 1999
**STOCK BULLS AND STEERS
 200-500 LBS. 50.00-84.00.**
STOCK HEIFERS 45.00-75.00.
**SLAUGHTER STEERS GOOD TO
 CHOICE 55.00-61.00; MEDIUM TO
 GOOD 45.00-58.00.**
**HOLSTEIN STEERS GOOD
 50.00-56.75, LIGHT 40.00-51.50.**
**SLAUGHTER HEIFERS GOOD TO
 CHOICE 56.00-60.00, MEDIUM TO
 GOOD 45.00-55.50.**
**BULLS: HEAVY 44.00-52.00, LIGHT
 42.00-57.50.**
**COWS: UTILITY HOLSTEINS
 35.00-40.00, CANNERS 27.00-36.50,
 CULLS 22.00 AND DOWN.**
**STOCK COWS UP TO 600.00 HEAD.
 BOB CALVES 30.00 AND DOWN.**
**HOLSTEIN BULL CALVES RETURN
 TO FARM: 90-120 LBS. UP TO 90.00.**
**HOLSTEIN HEIFER CALVES
 RETURN TO FARM UP TO 190.00.**
**BEEF X CALVES RETURN TO
 FARM, UP TO 100.00.**
**HOGS: TOP QUALITY UP TO 27.50,
 HEAVY UP TO 25.00, LIGHT
 20.00-50.00, FEEDER PIGS BY THE
 HEAD UP TO 37.00.**
SOWS: 12.00-22.00.
MALE HOGS: 4.00-18.00.
**LAMBS: 70-85 LBS. UP TO 74.00,
 85-125 LBS. UP TO 77.00, 30-60 LBS. UP
 TO 92.50, CULLS UP TO 60.00.**
SHEEP: UP TO 27.00.
**GOATS: ALL BY THE HEAD, LARGE
 40.00-90.00; MEDIUM 20.00-50.00;
 SMALL 7.00-35.00.**



WOODS

SINGLE SPINDLE ROTARY CUTTERS

Woods Cadet MD172 & MD184 are single spindle medium duty cutters for mowing grass and weeds, pasture clipping, stalk shredding and brush clearing.



Model MD172 cuts a 6 ft. swath and fits with a 25 to 75 HP and 1-3/8 in. 540 rpm PTO rated tractor.

Model MD 184 cuts a 7 ft. swath and fits a tractor rated 35 to 85 HP and 1 3/8 in. 540 rpm PTO.



LOADERS

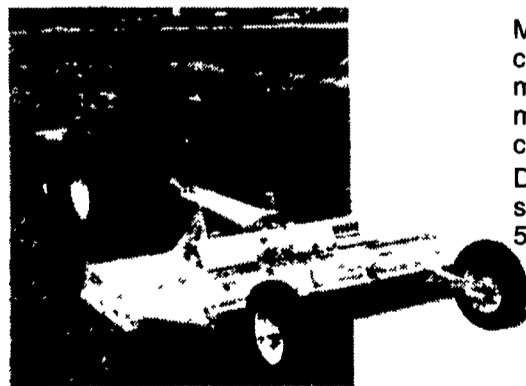


WOODS DUAL

7 Models to choose from. Whether your tractor has two wheel or four wheel drive and falls within the 11 to 200 HP range Woods has a DUAL loader to fit your needs. Fast-D-Tach attaches to your tractor in minutes. Available in tractor matching colors



HEAVY DUTY 2-SPINDLE MOWERS



Model 121 and 2126 gear drive mowers cut a 10 ft. swath and is available in either mounted or pull type. They are ideal for mowing grass, weeds, clipping pasture, cutting brush and shredding stalks. Designed for tractors rated 40 to 80 HP with standard category 2, 3-point hitch and either 540 or 1,000 PTO.



WOODS - DUAL WOODS ALLOWAY WOODS - GANNON WOODS - GILL
 ... come in for a demonstration

R.S. HOLLINGER & SON, INC.
 Mountville, PA
 717-285-4538

D.W. OGG EQUIPMENT CO.
 Frederick, MD
 301-473-4250

LINCOLN SUPPLY & EQUIPMENT CO.
 Somerset, PA
 814-443-1691

MESSICK'S
 Elizabethtown, Pa
 717-367-1319
 Abbottstown, PA
 717-259-6617

Westminster, MD
 410-848-4585

ECKROTH BROS. FARM EQUIPMENT
 New Ringgold, PA
 570-943-2131

REIFF FARM SERVICE
 Shippensburg, PA
 717-532-8601

HOOBER, INC..
 McAlisterville, PA
 570-463-2191

Orefield, PA
 610-366-2095

PIPERSVILLE GARDEN CENTER
 Pipersville, PA
 215-766-0414

WERTZ FARM & POWER EQUIPMENT
 Glen Rock PA
 717-235-0111

EMHERR



provides personal service to every customer. That keeps us one step ahead of the rest



EM Herr Serving The Farm Industry For Over 40 Years

- Weight-Tronix Feed Mill
- Transport Augers
- Bucket Elevators
- Stirring Systems
- Utility Augers
- Feed Bins
- Wet Tanks
- Grain Bins
- Air Drying Systems
- Grain Dryers
- Parts & Motors



AUTOMATIC BATCH OR CONTINUOUS FLOW GRAIN DRYERS



The Competitive Edge "Smart system" eliminates guesswork Early Order Winter Program

Call Us For Your Grain Dryer Service Work - 24 Hour Service... School Trained Technicians



Westfield Grain Augers BUY NOW, SAVE NOW 6 MONTHS NO INTEREST Truckload Sale Transport Augers In Stock

Full Line Parts Dept. *Sell, Service & Install*



Rt. 272 South Willow Street, PA 17584 Ph. 717-464-3321 or Toll Free 800-732-0053

Mon.-Fri. 6:30 am to 8 pm Sat. 7:30 am to 6 pm Sun. Closed



UPS Shipping Point



6/26