

Yale 4,000 lb.
Pneumatic Two
Speed, LP, PS,
84"-132" Mast
\$3,400



LTM Equipment Co.

Myerstown, PA
717/949-3582 717/949-3303 FAX
We buy, sell, and repair used equipment.
Most Trades Accepted.



GRADALL - 3 Buckets

Works Great
\$4,500
814/674-8756

- 1996 Case 580L Loader Backhoe, 1200 Hrs., 4WD, Cab, Ext. Hoe, #6194.....\$41,500
- 1990 Case 1840 Uniloader, 2400 Hrs., #6243.....\$11,500
- 1997 Case 1845C Uniloader, 400 Hrs., #6304.....\$19,500
- Case 580C, 2WD, Cab, #6220.....\$11,500
- Hydra-Mac, Model 2650, less than 1000 hrs., #6301.....\$18,500
- 1996 Case 1840, 700 Hrs., #6303.....\$16,500
- 1992 Skytrac 6036 Forklift, 4WD, 6000# 36' boom, #6193.....\$34,900
- Cat 416 Loader Backhoe, 2WD, Cab, Ex., #6181.....\$21,500
- 1987 Case 580K Loader Backhoe, 4WD, Cab, Ex., #6118.....\$21,500
- 1987 CDS 715D Loader Backhoe, 2WD, Cab, Std., 6000 hrs., #6209.....\$14,900
- 1994 Case 1840 Uniloader, Aux. Hyd., Drt. Bkt., 3000 hrs. #6205.....\$11,500
- 1983 Case W18B Wheel Loader, 4WD, GP Bkt., #6191.....\$16,500

Vernon E. Stup Co.

5859 Urbana Pike, Frederick, MD 21701
301-663-3185

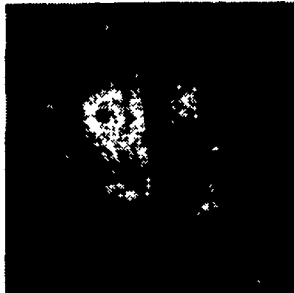
Marlow 10" Water Pump



Model 8F5
SS # 490288-spec
7269-seal
25358
4 cyl. Ford
Ind diesel
\$4,800

Aquatech JVPD Series Vacuum Machine

Trailer mounted, 32 HP gas engine, full opening rear door, dumping tank, power boom assem fluid pump off station, machine had hardly any use, good for inside work, hazmat, sludge, etc.



\$24,900

Petibone Masonry Fork Lift



4 WD gas flathead, standard, been sitting, needs tinkering
\$3,000

978/462-1000

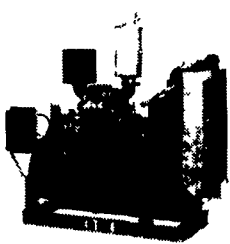


NH LX885 Skid Loader, 420 hrs., weights, 84" bucket, excellent condition Weaver's Mulch
610/383-6818

Diesel Engine Service

13 Pleasant Valley Road • Ephrata, PA 17522
PHONE: 717-733-3890 • FAX: 717-738-3146

DETROIT DIESEL & JOHN DEERE



- Parts • Service
- Rebuilding
- New JD Engines & Power Units
- Exchange Engines
- Rockford Clutch & Parts • Funk Gear Reductions • Rebuild Kits • Gen Sets

Call Us For Your Power Needs



Detroit Diesel - 53, 71, 92, 8.2
John Deere - 300, 400, 500 Series
Cummins - 4BT/6BT & 6CT Series
Visa & Mastercard Accepted

FOR NEW AND USED CONSTRUCTION EQUIPMENT PARTS AND ATTACHMENTS

CALL
H.E.L.P., INC.
(717) 469-0039
1-800-446-0505

Additional 15% Off of All Parts In Stock w/Reference To This Ad

Specializing In Caterpillar Parts also available for Case, John Deere, IHC, Fiat, Etc.

HEAVY EQUIPMENT LOADER PARTS, INC.

10070 Allentown Blvd. Grantville, PA 17028

EQUIPMENT FOR SALE

- FRONT END LOADERS:**
- FL2 1973 955K S/N 85J4399 **\$18,900**
 - FL4 1978 941 S/N 80H6423 **\$16,500**
 - FL4 1982 Case S/N 85J11710 **\$23,900**
 - WC20 - New Engine
 - FL9 1984 953 S/N 76Y01223 **\$45,900**
 - FL10 1987 953 S/N 20Z10412 **\$52,900**
 - FL11 1985 FIAT S/N L83481TO **\$32,900**
 - New Trans/4 Cu. Yd. Bucket
 - FL12 1986 953 S/N 20Z0809 **\$49,900**
 - FL14 1995 953B S/N 5MK01939 **\$98,900**
 - FL15 1995 953B S/N 5MK01981 **\$98,900**
- TRACK EXCAVATORS:**
- TB8 1987 770E S/N 4116X KATO **\$24,900**
 - TB16 1988 1220 S/N 2198 KATO **\$32,900**
- GRADERS:**
- GR3 1978 670 S/N 006477T **\$19,900**
- SCRAPERS:**
- S210 1974 S/N 5UCH249 **\$21,900**
 - Michigan - 20 Yd.
 - S211 1978 260B S/N 28M-993 **\$37,900**
 - Fiat
 - S212 1974 260B S/N 28M-298 **\$38,900**
 - Fiat - Cummins
 - S213 1975 260B S/N 28M-455 **\$33,900**
 - Fiat
- DOZERS:**
- FD9 1978 D8K S/N 77V8821 **\$64,900**
 - Cat/with Rippeon
 - FD11 1986 D7H S/N 79Z0088 **\$78,900**
 - Cat

(800) 368-9990

1986 JD 410C, 4x4 backhoe, standard hoe, good running cond. 24 in. bucket, 60% tires. 570-345-3744

WANT: JD wheel loader 544 or 544A, parts or running. 732-329-6555.

'79 JD 690B excavator, mechaical thumb, 36 in. bucket, 4200 original hrs., 80% u/c, excel. pin work, will help w/ transportation, \$20,500. 410-893-2405

Good used Case forklift, 6000lb, rough terrain, motor completely rebuilt. 717/935-5740.

1995 and 1996 Case 580L backhoes, 4WD, full cab, both low hrs. 717-367-9773 / 302-335-0715.

Cat 955K tract loader good U/C, recently painted, good cond. \$17,500 obo. 717-776-3181

Wayne brush & wood chipper, 16 inch, V8 Ford engine, \$3850. 717-764-8337

WANTED portable stone crusher. 717/935-2056.

WANTED TO BUY: Construction equipment, backhoes, dozers, loaders, excavators, skid steers. 877-529-9328 toll free.



Case 580C, Loader-Boom Tractor, Ready To Work, Asking \$70,900 complete \$9,850
Kutz Farm Equipment 570-345-4882



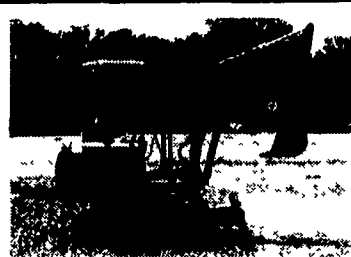
Thumbs for Excavators from \$1,500 and up

Heavy Equipment Loader Parts, Inc.

10070 Allentown Blvd., Grantville, PA 17028
(717) 469-0039 (800) 446-0505
Fax (717) 469-7679



Kubota KX121-2 Excavator
w/Cab, New Machine



Kubota KX61 Excavator
Rubber Tracks - Demo Unit



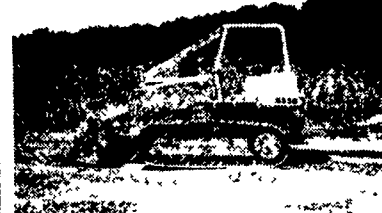
Kubota KX71 Excavator,
1780 Hrs., Nice Shape



John Deere 675B
Skid Loader, Good Shape



Cat 963 LPG, 82 Model 7700 1-Owner
Hrs., Cat Cab, New Paint, Excellent..... \$46,500



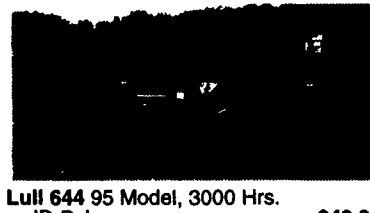
JD 665B, LGP, 88 Model, New S.A.L.T
U/C, 6500 Hrs.. \$32,000



96 Case 1150 G, LGP, Long Track, 2600
Hrs., w/Warranty..... \$64,000



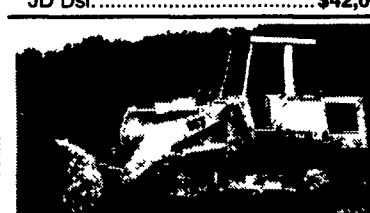
93 JD 750B Long Track, Drive Train
Warranty..... \$54,000



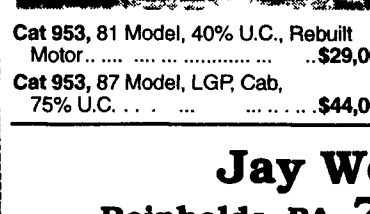
Lull 644 95 Model, 3000 Hrs.
JD Dsl..... \$42,000



Cat 955L 4-in-1 Bucket, Good UC,
Excellent..... \$20,000



JCB 1400B cab, 4x4, Ext. Hoe,
90 Model, (n.a.p.).....\$19,500



Cat 953, 81 Model, 40% U.C., Rebuilt
Motor..... \$29,000

Komatsu D58E, 88 Model,
3600 Hrs .. \$39,000

Cat 973 w/Cab & Ripper, For Sale or
Rent By The Week or Month

Ditch Witch 6510, Deutz diesel,
backhoe, trencher, cable plow **\$8,500**

Cat 955K Crawler Loader ..\$18,000

Jay Weaver, LLC

Reinholds, PA 717/336-7375

Financing and Lease Purchase Available • No Sunday Calls