

## Extra Vitamin E Helps Young Pigs Survive Weaning

COLUMBUS, Ohio — Producers frequently stumped by the sudden death of a seemingly healthy and rapidly growing young pig should consider the lack of vitamin E as a suspect, said Ohio State University animal scientist Don Mahan.

Vitamin E serves as an antioxidant in pigs, protecting cell tissue from damage from free oxygen generated during metabolism. If a pig is vitamin E deficient, muscle, liver and other tissue will begin to break down and can result in the animal's death.

"When a pig is born it's already deficient in vitamin E because a minimal amount of the fat-soluble products that contain vitamin E can transfer through the placenta of the sow during pregnancy," Mahan said. "After birth, the young pigs get their vitamin E from the colostrum and milk of the sow. If

the sow has low body stores or is fed low dietary levels of vitamin E, then the young pig also will be low in vitamin E when it is removed from the sow during weaning."

The blood and tissue vitamin E concentrations of pigs decline fairly dramatically during weaning, so that is the phase where a pig is most susceptible to vitamin E deficiency problems, he said. About 2 percent of young pigs die during this postweaning period because of low levels of vitamin E received from the sow or selenium — an element that serves a similar purpose as vitamin E in a pig's body.

Mahan and other Ohio State University researchers have studied the effects of vitamin E and selenium deficiencies in pigs for nearly 10 years. He, Ohio State postdoctoral student Ivan Moreira, and Ohio State graduate research associates

San Ching and Ted Wiseman recently began looking at ways to correct low vitamin E levels in young weaned pigs.

Wiseman presented the results of their research at the American Society of Animal Science and American Dairy Science Association Midwest Sectional meeting in Des Moines, Iowa, March 15-17.

"We decided to correct the problem by adding vitamin E to the diets or drinking water of two-week-old weaned pigs," Mahan said. "Previous research showed that when vitamin E is added to a diet, the serum values of vitamin E in a pig's blood did not increase much until a couple weeks after weaning. So we decided to add various grades of vitamin E up to some very high levels to see what amount of vitamin E added to the diet or drinking water would raise vitamin E blood serum up to its necessary level within a pig."

The National Research

Council recommends a pig's diet contain 16 international units (IU) of vitamin E per kilogram (kg) of diet. The dietary levels the Ohio State researchers studied were 0, 20, 40, 60, 80, 100, 150 and 200 IU per kg of feed. They found it took almost 80 IU per kg of vitamin E in the weaned pigs' diets to get blood serum values that would prevent a deficiency.

For drinking water, increases of 0, 55, 110, 220 and 440 IU per liter of water were studied. It took the addition of almost 100 IU per liter of water to get good vitamin E blood serum values, Mahan said.

"We looked at drinking water because even though a pig may not be eating well, generally it will always consume water," he said. "The diet and drinking water values we found that resulted in appropriate vitamin E blood serum levels were both much higher than what the NRC has established for dietary requirements."

Feed companies could use this information to increase the amount of Vitamin E added to their products, Mahan said. It could help veterinarians who recommend injections and suggest feed requirements to producers. Producers also could add vitamin E to the drinking water of their young pigs if they suspect a vitamin E deficiency.

All grains fed to pigs generally have a low vitamin E content, so finding animals low in vitamin E can be common, he said. Vitamin E is found in the oil of feed crops, so soybeans generally have higher levels of the vitamin. But, vitamin E can be destroyed easily when exposed to air, reducing effective levels in feeds.

The Ohio State University research was partially sponsored by BASF, a vitamin manufacturer.

For more information about vitamin E and its effects on pigs, interested people should contact Mahan at (614) 292-6987.

## Rotary Milking System Takes Milking To Next Level

KANSAS CITY, Mo. — The unique design and superior quality of the Alfa Laval Agri Turn-Styles® T2 rotary stall system creates efficiency in any operation to achieve the highest level of milking performance possible.

Backed by more than 70 years of experience, the Turn-Styles T2 rotary stall system combines practical expertise with the latest technology.

The Turn-Styles T2 offers a variety of exclusive features such as the ease and efficiency of the

Retract Guide Arm for better milker positioning on the udder, reduced liner slips and more even milk out. The T2's stainless steel safety shield keeps dirt and grime away from milk lines, milking automation and undercarriage system.

The "easy glide" steel roller support system assure reliability and a long life for your system, plus the benefits of the exclusive automation cabinet and On-deck CIP washer units, to protect your investment.

# PRECISE

CONCRETE WALLS, INC.

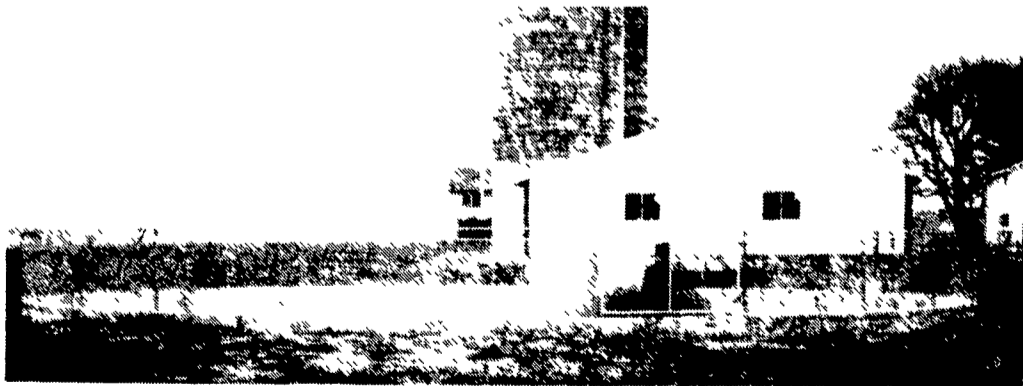
For All  
Your Concrete  
Walls And  
Construction Needs

Agriculture - Residential - Commercial

- Buildings • Basement • Floors
- Retaining Walls • Footer
- NRCS Approved Tank Designs
- All Types Of Flat Work

Specializing In  
**Manure Storage**

Round or Rectangular,  
In-Ground or  
Above-Ground



65' Diameter Circular Manure Storage

Invest In Concrete, Quality Work That Will Last A Lifetime

CALL FOR **FREE** ESTIMATES  
AND SEE HOW AFFORDABLE  
CONCRETE WALLS CAN BE

**CONTACT**  
**ROY SENSENIG**  
**717-355-0726**

Authorized Dealer For Keystone Concrete Products

# PRECISE CONCRETE WALLS, INC.

531 Hollander Rd., New Holland, PA 17557

# LAND PRIDE



## A Cut Above the Rest



AFM4011

### All-Flex Mowers

- 11', 14', 16'8" and 22' widths
- Three decks
- Generous deck overlap
- Mowing height of 3/4" to 5 1/4"
- High blade tip speed ensures a sharp cut
- Sharp turn capabilities

The Land Pride All-Flex Mower is the first choice for any open area that requires a groomed look such as parks, broad landscapes and playing fields

### Pennsylvania

**Betts Equipment**  
3139 Windy Bush Road Rt 232  
New Hope, PA 18938  
215-598-7501

**Hooper, Inc.**  
Main Street  
Intercourse, PA 17534  
717-768-8231

**Hooper, Inc.**  
East Main Street  
McAlisterville, PA 17049  
717-463-2191

**Deerfield Ag & Turf Center, Inc.**  
RR 2 Box 212  
Watsonstown, PA 17777  
570-538-3557

**Detlan Equipment, Inc.**  
141 East Main St  
Silverdale, PA 18962  
215-257-5177

**Thomas L. Dunlap**  
Rt 220, Main St Exit  
Jersey Shore, PA 17740  
570-398-1391

**Eckroth Bros Farm Equipment**  
Rd 2, Box 24A  
New Ringold, PA 17960  
570-943-2131

**Eckroth Equipment Co.**  
4910 Kernsville Rd  
Orefield, PA 18069  
610-366-2095

**Hines Equipment**  
RT. 220, Belwood, PA  
814-742-8171

**Keller Brothers**  
R7 Box 405  
Lebanon, PA 17042  
717-949-6501

1950 Fruitville Pike  
Lancaster, PA 17601  
717-569-2500

**M.S. Yearsley & Sons**  
West Chester, PA  
610-696-2990

**Pikeville Equipment Inc.**  
RD 2, Oysterdale Road  
Oley, PA 19547  
610-927-6277

**Stoltzfus Farm Service**  
Cochranville, PA  
610-593-2407

**Stouffer Bros Inc.**  
1066 Lincoln Way West  
Chambersburg, PA 17201  
717-263-8424

### New Jersey

**Rodio Tractor Sales**  
North White Horse Pike  
Hammonton, N J 08037  
609-561-0141

**Warren County Service Center**  
228 Route 94, Blairtown, N.J.  
908-362-6916

**Frank Rymon & Sons, Inc.**  
RD 3, Box 355  
Washington, N.J. 07882  
908-689-1464