

Apple Growers Learn Techniques To Limit Pesticide Use

GENEVA, N.Y. — Spring got off to a good start for those New York apple growers who attended the Cornell Apple Integrate Pest Management (IPM) In-depth School in March in Geneva. The fruit school attracted more than 72 participants.

Jeff Soons from Soons Orchard Inc., in New Hampton, N.Y. just 65 miles outside of New York City, considered the school a "very good indoctrination into all the ins and outs of pest control."

"We don't use IPM as intensely as some growers, but I definitely expect to use some of what I learned," he said. The Soons family has been growing apples for 89 years. They farm 25 acres of apples along with an assortment of sweet corn, pumpkins, peaches, and other truck-and-farm-market crops.

"We have signed up with Orange County Extension Service for help with scouting for insects on our apple blocks hoping to gain information that

will help us limit and space out sprays better," he said. Apples are one of the most intensely sprayed fruit crops, because they are very vulnerable to damage from insects and diseases.

"Attendance was highest from New York State," said NYSAES entomologist Art Agnello, who was chairman of the organizing committee. "There were 40 growers, four consultants, and 15 representatives from industry and government."

The purpose of the course was to provide a forum on the recommended methods of incorporating an integrated pest management and decision process into orchard management operations throughout the year. The format of the school was based on grower feedback from previous IPM fruit schools.

"In the past, growers have told us they have difficulty incorporating research-based management recommendations into their day-to-day opera-

tions," said Agnello. "We constructed these sessions with more of a grower's-eye view of the topics."

Speakers were organized by topics that related to each other, and were asked to relate their recommendations to specific times of the growing season, and to include other issues a grower would be dealing with at the same time.

At the school, 29 speakers presented 52 separate talks on apple topics in the field of entomology, plant pathology, horticultural science, fruit and vegetable science, natural resources, cooperative extension, agricultural engineering, and production practices. Most of the speakers whom were from the New York State Agricultural Experiment Station in Geneva, the Hudson Valley Lab at Highland, and CCE. Three guest speakers include Helmut Riedl, from Oregon State University, Starker Wright, from the University of Massachusetts,

and Jim Gallott, a grower from Vermont.

Speakers gave their best advice on constructing a pest management plan for each part of the growing season for each developmental stage of the apple. Input was solicited from other specialists as well as the school audience on how to best integrate and coordinate each strategy into an overall orchard system. In addition, information

was presented on alternatives to the most commonly recommended practices, including promising results of current research trials, low-spray options, and alternative technologies that may be applicable in the near future

The event was sponsored by the Cornell Fruit Statewide Program Committee.

Education Friendship

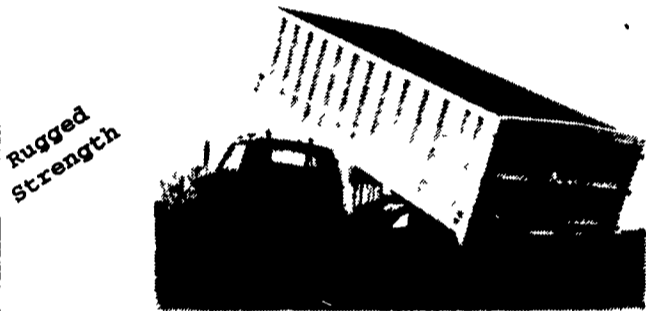
(Continued from Page A30)

The school actively unfolds international exchange and cooperation. It has successively signed the agreements of establishing friendship schools in France and Japan, and has sent teachers to various countries, including the United States, Germany, and Holland to tour and study.

Solanco High School has served the community since its construction in 1961, with additions and renovations completed in

1988 and 1997. The district serves all 186 square miles of southern Lancaster County and is composed of one borough and eight townships. The area is predominantly rural, although there is a steadily increasing population. The community supports education and values a balance between providing precollege and vocational opportunities for students. The student enrollment is 1,362 in grades nine through 12.

ALUMINUM GRAIN BODIES & ALUMINUM REPAIRS by



Rugged Strength

Dependable Performance

These ultra-light bodies are designed for strength through engineering, not strength with bulk. For example, a 16' grain body with tailgate and 48" sides weighs only 1490 lbs. complete. We'll build you any length or any side height up to 60".

Also available:

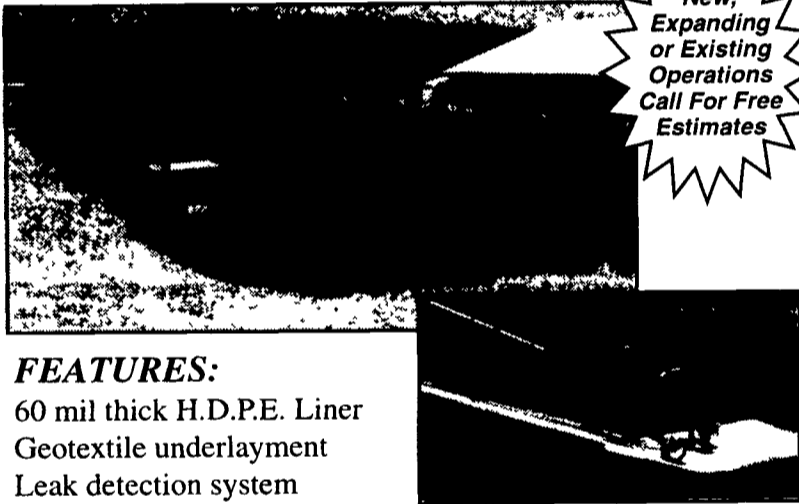
- Double swinging hay hauling tailgate
- Barn door type tailgate
- Slide out cattle chutes
- Diamond flooring
- Pull out panel tailgates
- Any size grain chute

HEWEY WELDING

1045 Wampler Rd. Lebanon, PA 17042 (717)867-5222

SITE EXCAVATION

Installation of H.D.P.E. Liner Systems for:
Dairy, Hog, and Veal Manure Storage Facilities
Golf Course and Recreational Ponds



New, Expanding or Existing Operations Call For Free Estimates

FEATURES:

- 60 mil thick H.D.P.E. Liner
- Geotextile underlayment
- Leak detection system
- Economical Manure Storage
- Seals manure in, subsurface water out
- Concrete ramp for manure agitation and pumping

MANADA CONSTRUCTION CO.

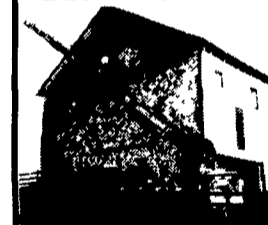
1942 Camp Swatara Road • Myerstown, PA 17067
Ph; (717) 933-8853 • Fax: (717) 933-8078



"TALK IS CHEAP"

You can now save 73% and more on long distance and phone calls! Send for your new telecard today and start saving. Send LSASE To FM PARKER 412 Shady Ln High Point, NC 27262

SANDBLASTING - SPRAY PAINTING - AERIAL LADDER EQUIPMENT



HENRY K. FISHER & SONS, INC.

667 Hartman Station Road Lancaster, PA 17601 (717) 393-6530

NOTICE: FARM OWNERS

Goodville Mutual Is One of the Top 5 Farm Insurance Companies in Pennsylvania

WANT TO KNOW WHY?



Liz Martin
Martin Insurance Agency
459 C N George St
Millersville, PA 17551
(717) 872-7756
Toll Free 1-877-791-5235
www.martininsurance.com
Affordable insurance for farm, home vehicle and small business

Agent for Goodville Mutual

MILLER DIESEL, INC.

FUEL INJECTION & TURBO SPECIALIST

6030 JONESTOWN ROAD, HARRISBURG, PA 17112

(717) 545-5931 • 1 (800) 296-5931

Since 1957



Specializing in:

FARMING & AGRICULTURAL

Factory Authorized Diesel Fuel Injection Sales, Service & Parts

Miller Diesel, Inc. offers:

- Diesel Fuel Injection Pumps, Injectors, Turbochargers
- Factory Trained & Authorized for complete services on Stanadyne (Roosa Master), Lucas CAV, Simms, Robert Bosch, Ambac (American Bosch), etc
- Instant Exchange or Rebuild (Fast Turn Around Time)
- Feed Pumps (John Deere & Most All Applications)
- Quality Workmanship, Experience, Troubleshooting.
- Free Pick Up & Delivery (100 mile radius of Hbg) Daily UPS Shipping
- NEW CUSTOMER • 10% DISCOUNT On Rebuilds or Exchange With This Ad Expires 12/31/99

MILLER DIESEL, INC.

WE WANT TO BE YOUR FUEL INJECTION SPECIALIST

DURABED®

COW MATTRESS

80 oz.

Waterproof

The Only One Of Its Kind



- The Heaviest
- The Driest
- The Most Effective
- The Strongest
- The BEST

Why Buy Anything Else?

North Brook Farms
Toll Free: 877-624-2638
Call for Dealer nearest you.



PENNSYLVANIA DEALERS

Martin's Farm Supply
Greencastle
717-597-4283

Martin Construction Co.
Kutztown
610-683-6120

Ammon Fisher
Ronks
717-687-0349

Farmer Boy
Myerstown
717-866-7565