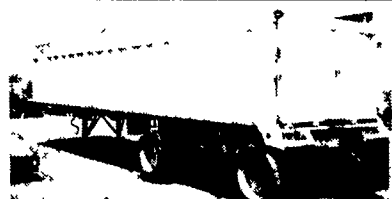


TRUCKS AND TRAILERS



89 Dorsey 38' Aluminum Frameless Dump, 10' Spread, Air Ride, 2-Way Gate.....\$16,000



90 - Mack CH613, 350 H.P., A/R, 15 Sp.....\$19,000

87 - Kenworth T-600 Cat 3406, 15 Sp., A/R.....\$12,900

87 White Volvo, Cummins 350, 9 Sp., Wetline.....\$8,000

Int. Single Axle Truck Tractor, Cummins Diesel, 290 H.P., 9 Sp., Air Brakes.....\$5,800

80 General 44' Step D. w/Beavertail, R. Tires. **SOLD** \$6,000



92 Mitsubishi, 29,000 GVW, Air Brakes, w/24' Jerr Dan Rollback, Winch, Tool Boxes.....\$18,000

92 Freightliner FL70, 33,000 GVW, Air Brakes, 5.9 Cummins, w/24' Enclosed Van Body



93 Ford L-9000 Aero Max, Cat 3406C, 350 H.P. Jake, 9 Sp., 40,000 Rears, Air Ride, New Brakes, Good Rubber.....\$17,900

Weaver's Truck and Equipment Sales

Milton, PA 570/523-9598

CLEAN EQUIPMENT

1993 Mack Tractor
1993 Peterbilt Tractor (Wet Lines)
1990 Cobra Dump Trailer
717-367-6496

MACK TRAXLE DUMPS 1979 & 1980 RD600'S

300 Engine, 6-speed Lo-Hole Trans., 18,000lb. F/A, 44,000lb. Mack Rears, 4:17 Ratio, 11R24.5 Tires, 16 1/2" & 17' Steel Beds
Both in Very Good Condition \$20,000. Ea. Or \$38,000. Both
814-625-2617 or 814-625-2515 (No Ad Solicitors)



83 Eagle Wagon Ltd. 4 WD - 115,000 Miles



83 GMC - 16 Passenger Mini Bus V-8, Auto., Runs Good

4 I-Beams
49' Long, 28" High w/12-1/2" Web



Aluminum Tanker/Trailers 7500 gal. and up



12' Reefer Body, under body refrigeration unit, Uses 220 electric Has damage



1993 Toyota Pickup 4 Cyl, 5 Spd Trans, AM-FM Radio, A/C, Excellent Condition, High Mileage



9 40' - 45' 1970's & Newer Steel Flatbed Trailers some have sliding tandems, all in good condition \$2,500/Ea. and Up



Michigan Loader Model L30 Quick Coupler, Comes With 1 Yard Bucket and 60" Forks, Runs Excellent



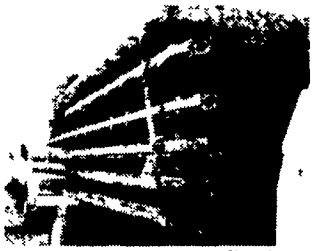
W7 Case Loader., 15 5x25 tires, runs good serial #9900486



1500 gallon Sludge Tank
Forklifts For Sale



Hyster 2,000 lb capacity, 3 wheeler, propane gas, solid tires, 92" Fork height, 48" forks
Towmotor 4,000 lb capacity, 2 stage mast, 108" Fork height, 42" forks, solid tires
Towmotor 2,000 lb capacity, 106" Fork height, 42" forks, solid tires



New Flatbeds Available Sizes currently available are 12', 14', 20', 22' and 24'. Racks are also available.

19' NEW Lumber Body w/Ratchet Tie-Downs w/Dumping Hoist



Clark Crane, 14 Ton Capacity, 4-53 Detroit, 60' boom, 14 00x24 tires, runs good serial #720



94 IH Model 4900 DT466 engine, 5 spd, single rear, air brakes, A/C, 32,900 GVW, double frame, 11x22 5 Budds, 254" W B 19' NEW Lumber Body w/Ratchet Tie-Downs w/Dumping Hoist



1948 International KB Chassis, 50,000 miles, 269 gas engine, 2 spd trans., hydraulic brakes, excellent condition, been in storage over 30 years.



1988 Volvo/White 3306 Cat engine, 740 Allison, 44' Rockwell rears, 11x22.5 tires, Galton trash body model FLSC35



89 GMC Sierra SLE Chattanooga Choo Choo Custom, 4WD, 16" Aluminum Wheels, Running Board, 132,007 Miles



1980 IH Model 1824 446 V8, 5-spd, single rear, 4x4, w/13' angle snow plow, 10' dump body, air brakes, 10 00x20 tires, 30,200 GVW, only 20,963 miles!

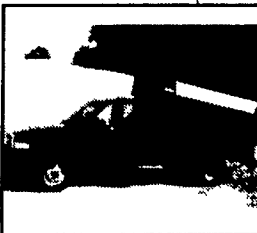
TruckCraft Products for All Your Hauling, Loading and UNLOADING Needs!!



TC - 100 PRO - An all steel pickup insert, 4000 lb and 2 cu yd capacity, Adds approx 750 lbs to your truck, For full size pickups, Pre-assembled unit installs quickly, (optional) cab protector



TC - 120 ULTRA - An all aluminum and stainless steel unit, 5000 lb and 2 4 cu yd capacity, Adds approx 400 lbs to your truck, For full size pickups, Virtually no maintenance, Greater payloads and hauling volume



TC - 310 - Combination Service Dump - 12,000 lb and 2 75 cu yd capacity, 55 cu ft of storage, For use on one ton vehicles, All Steel construction

Markets Served by TruckCraft Products

- Lawn & Garden Care
- Golf Courses
- Roofers
- Landscapers
- Tree Service
- Small Contractors
- Nurseries
- Fire Wood Retailers
- Entrepreneurs
- Parks and Camp Grounds
- Municipalities
- Farmers

Sold By:

WEAVER'S TRUCK & EQUIPMENT
Milton, PA
570/523-9598



GRIMES TRUCK CENTER

12835 Salem Avenue • Hagerstown, Maryland 21740 • 301/790-2200

INTERNATIONAL RENEWED ENGINES 7.3L ENGINE



- Delco Remy is the ONLY Authorized remanufacturer of V8 engines for International®.
- All engines are manufactured using parts from OEM approved suppliers
- All engines are final factory tested using computer controlled equipment
- Our extensive warranty is honored at International dealers across the United States and Canada They can provide you any service or part sales you require for your 7.3L diesel vehicle
- Through an exclusive agreement with International, Delco Remy IS THE ONLY REMANUFACTURER providing new cylinder heads on 7.3L engines, as required
- Delco Remy utilizes no heavy laced or welded cylinder heads

991515C94 Trimmed 7.3L Natural Aspirated, 1987+ International
991520C93 Trimmed, 7.3L Natural Aspirated, 1987+ F Series

The Best Value in the Industry

With the improved design, increased quality, leading warranty coverage, competitive pricing and the reputation of International and Delco Remy standing behind the product, you will have the piece of mind you need and the value you demand

Delco Remy \$4575⁰⁰ Exch.

800-474-6371

301-790-2200

11.1 60 series Detroit engines 12.7 60 series Detroit engines 8.2 non-turbo Detroit engines

Wm. Cohen & Sons, Thorndale, PA

(610) 269-1298 Call between 7 am - 4:30 pm

Hundreds of Used Truck Tires For Sale
Sizes from 16" to 24"
1979 Crane Carry Cement Mixer, 10 Yd. Rex Mixer, 230 Cummins, 8 Spd. Trans., 44,000 Lb. Rears Asking \$8,500

Used Overhead Door For Sale
16'H x 14'W Asking \$550
Aluminum Loading Ramps 9'x10', also some other sizes available
Yale Electric Hoists 1/2 ton cap., 440 volt, single and three phase. Asking \$350/ea.

Pedestal Grinder, Baldor 2 Hp., 3 phase, 220 amps
Toledo Scale 1,000 lb. Capacity
Oil Heaters 250,000 BTU'
New Onan Generator 2500 Watt Gas Powered

Used Van Trailers - For Sale or Rent