

MIDDLEBURG LIVESTOCK AUCTION
MIDDLEBURG, PA
JUNE 29, 1999

CATTLE 384 [PDA] Compared with last week's sale, sl steers mostly steady to spots 150 lower, sl cows 200 higher, sl bulls mostly 200 higher

SLAUGHTER STEERS High Choice and Prime 2-4 1215-1410 lbs 66 25-68 25, Choice 2-3 1180-1500 lbs 59 75-65 50, Select 1-3 56 25-60 75, Standard 1-2 49 50-55 00

HOLSTEIN STEERS High Choice and Prime 2-3 1110-1530 lbs 57 50-61 00, Choice 2-3 1100-1470 lbs 52 75-57 75, Select 1-2 47 75-53 75, Standard 1-2 42 75-46 00

HEIFERS Choice 2-4 1075-1400 lbs 58 75-64 00, Select 1-3 55 00-59 75, Standard 1-2 45 00-55 00

COWS early sales Breakers 75-80% lean 40 00-47 25, Boners 80-85% lean 35 00-43 00, Lean 85-90% lean 33 25-41 75 Shells down to 25 50

BULLS Yield Grade 1 1155-1945 lbs 49 25-54 50 with one 59 00, few Yield Grade 2 970-1340 lbs 44 00-47 75

FEEDER CATTLE STEERS Medium and Large 1 300-415 lbs 62 50-80 00, 750-825 lbs 56 00-60 00, Medium and Large 2 300-480 lbs 41 00-59 00, 500-625 lbs 51 50-54 25, 825-1000 lbs 47 00-52 50, **HEIFERS** Medium and Large 2 360-490 lbs 45 00-57 00, 540-685 lbs 36 00-44 00, 750-975 lbs 45 00-57 00, **BULLS** Medium and Large 1 400-865 lbs 46 00-67 00, Medium and Large 2 370-620 lbs 48 00-51 00

CALVES 236 **VEALERS** Standard and Good 75-100 lbs 20 00-27 00, Utility 60-80 lbs 10 00-18 00

FARM CALVES Holstein bulls 10 00 lower No 1 Holstein bulls 90-130 lbs 80 00-117 00, 80-90 lbs 65 00-80 00, No 2 90-110 lbs 45 00-85 00, 75-85 lbs 30 00-55 00, No 1 Holstein heifers 80-120 lbs 175 00-230 00, No 2 70-120 lbs 50 00-125 00 **Beef type bulls and heifers** 90-120 lbs 70 00-107 00

HOGS 281 (06/28 & 29/99) Bulk of supply sold on Monday and reported by the auction Barrows and gilts 2 00 lower, sows steady to spots 3 00 lower

BARROWS AND GILTS 49-54% lean 230-270 lbs 32 00-33 50, 45-50% lean 225-275 lbs 29 75-31 75, 40-45% lean 270-305 lbs 28 25-30 00

SOWS US 1-3 315-470 lbs 18 50-26 00, 500-615 lbs 25 75-29 75, Medium 345-415 lbs 10 00-16 00

BOARS 245-680 lbs 7 00-11 00, one 930 lbs 7 00, **FEEDER PIGS** 70 US 1-3 25-45 lbs, 12 00-23 00, 50-70 lbs 32 00-49 00 -- per head

SHEEP 42 **SLAUGHTER LAMBS** Choice 20-45 lbs 89 00-95 00, 50-80 lbs 70 00-97 00, 90-115 lbs 70 00-79 00

SLAUGHTER SHEEP 15 00-23 00, Yearlings 50 00-53 00

GOATS 52 One Large Billies 68 00, Medium and Small 24 00-53 00, Large Nannies 35 00-64 00, Medium 27 00-44 00, Large Kids 20 00-51 00, Small 10 00-26 00 --- per head

WEEKLY LIVESTOCK SUMMARY
JUNE 25, 1999

13 LIVESTOCK AUCTIONS

CATTLE 4870 Compared with 4634 head last week and 4124 head a year ago Slaughter steers 25 to 75 lower spots 150 lower, sl heifers steady to 100 lower, sl cows steady to 100 spots 200 lower, sl bulls mostly steady **SLAUGHTER STEERS** High Choice and Prime 2-4 65 85-69 75, Choice 1-3 61 00-66 75, Select and Low Choice 2-3 58 75-64 50, Select 1-3 56 00-62 50, Standard 1-2 48 50-55 50

HOLSTEINS High Choice and Prime 2-3 57 25-60 50, Choice 2-3 52 25-57 75, Select 1-2 47 00-52 50, Standard 1-2 42 00-47 00

HEIFERS Choice few Prime 2-4 61 00-65 00, Select 1-3 55 00-61 50, Standard 1-2 46 00-54 50 **COWS**

Breakers 75-80% lean 38 00-45 50, Boners 80-85% lean 35 00-42 75, Lean 85-90% lean 32 00-39 25, few to 28 00 Shells down to 24 00

BULLOCKS Select 1-3 48 50-58 75 **BULLS** Yield Grade 1 1000-2500 lbs 47 00-56 25, Yield Grade 2 900-2400 lbs 37 00-48 00

FEEDER CATTLE STEERS Medium and Large 1 300-500 lbs 66 00-80 00, 600-825 lbs 55 00-63 00, Medium and Large 2 500-700 lbs 54 00-63 00, **HEIFERS** Medium and Large 1 300-500 lbs 65 00-75 00, 500-800 lbs 60 00-69 00, Medium and Large 2 500-800 lbs 50 00-61 00, **BULLS** Medium and Large 1 300-600 lbs 66 00-78 00, Medium and Large 2 400-700 lbs 52 00-62 00

CALVES 3085 Compared with 2833 head last week and 2948 head a year ago **Vealers** steady to strong **VEALERS** Choice 150-350 lbs 70 00-96 00, Good 140-250 lbs 51 00-68 00, Standard and Good 75-120 lbs 20 00-35 00, Utility 50-100 lbs 11 00-25 00 **FARM CALVES** Holstein bulls mostly 5 00 lower with No 2 20 00 to 40 00 lower, Holstein heifers mostly 20 00 higher No 1 Holstein bulls 90-120 lbs 90 00-136 00, No 2 80-120 lbs 40 00-80 00, No 1 Holstein heifers 80-120 lbs 180 00-260 00, No 2 80-120 lbs 110 00-180 00 **Beef type bulls and heifers** 75-140 lbs 55 00-120 00

HOGS 2106 Compared with 2122 head last week and 2172 head a year ago **Barrows and gilts** 100 to 125 lower, sows steady to 200 lower

BARROWS AND GILTS 49-54% lean 220-265 lbs 34 00-35 25, few to 37 00, 45-50% lean 225-275 lbs 33 00-34 00, 40-45% lean 240-300 lbs 29 00-32 75

SOWS US 1-3 300-500 lbs 24 00-29 00, 500-700 lbs 27 00-31 00 **BOARS** 10 00-12 50

FEEDER PIGS 298 Compared with 201 head last week and 124 head a year ago US 1-3 35 50 lbs 25 00-31 00, 60-80 lbs 32 00-38 00 --- per head

SHEEP 1938 Compared with 1622 head last week and 2344 head a year ago

SLAUGHTER lambs steady to strong **SLAUGHTER LAMBS** Choice 40-75 lbs 80 00-110 00, Good and Choice 50-110 lbs 50 00-80 00

SLAUGHTER SHEEP 20 00-40 00 **TWO GRADED FEEDER PIG SALES** 846 Compared with 1245 head last week and 717 head a year ago **Feeder pigs** steady to 500 lower US 1-2 30-50 lbs 55 00-70 00, 50-70 lbs 45 00-65 00, US 2-3 30-50 lbs 40 00-55 00, **SLAUGHTER** 25-35 lbs 88 00-135 00, 40-100 lbs 54 00-85 00 --- per cwt

LEESPORT LIVESTOCK AUCTION
LEESPORT, PA
JUNE 30, 1999

CATTLE 230 [PDA] [Supply included 100 slaughter steers and heifers, 91 cow, 10 bulls and 29 feeder cattle] slaughter steers 100 lower, sl cows mostly steady, bulls steady

SLAUGHTER STEERS few High Choice and Prime 2-4 1225-1440 lbs 65 25-66 00, Choice 2-3 1150-1450 lbs 60 00-64 00, few Select 1-3 58 25-61 00, few Standard 1-2 50 75-54 25

HOLSTEIN STEERS High Choice and Prime 2-3 1330-1485 lbs 57 25-59 00, Choice 2-3 1195-1665 lbs 52 00-57 00, Select 1-2 47.75-53 00, few Standard 1-2 44 00-45 00

HEIFERS Choice 2-4 1065-1335 lbs 57 00-62 00, few Select 1-3 56 25-59 00

COWS. Breakers 75-80% lean 39 00-44.00, couple high dressing 47 00 & 47 50, Boners 80-85% lean 37 50-42 00, low dressing 34.50-37.50, Lean 85-90% lean high dressing 38 00-41 00 mostly 30 50-37 50 Shells down to 26 00

BULLS Yield Grade 1 1025-1385 lbs 48 00-51 50 with one 56 50, Yield Grade 2 985-1160 lbs 43 00-47 75

FEEDER CATTLE STEERS few Large 2 330-540 lbs Holsteins 58 00-

62 50, **HEIFERS** Medium 1 385-410 lbs 77 50-79 00, Medium 2 530-675 lbs 54 00-57 50, few Large 2 625-885 lbs 38 00-41 00, **BULLS** Medium 1 300-430 lbs 79 00-80 00, 625-900 lbs 44 50-50 00

CALVES 160 **VEALERS** few Good 135-145 lbs 70 00, few Standard and Good 75-105 lbs 20 00-30 00, Utility 60-80 lbs 10 00-20 00

FARM CALVES Holstein bulls steady with spots to 500 lower No 1 Holstein bulls 90-125 lbs 80 00-122 50, 80-90 lbs 60 00-75 00, No 2 90-115 lbs 45 00-82 50, 80-90 lbs 30 00-55 00; No 1 Holstein heifers 90-110 lbs 190 00-215 00, No 2 85-120 lbs 80 00-155 00 **Beef type bulls and heifers** 70-100 lbs 50 00-135 00

HOGS 100 Barrows and gilts 1 50 to 2 00 lower

BARROWS AND GILTS 45-50% lean 220-255 lbs 27 50-29 75, lightweights 180-205 lbs 24 50-25 00

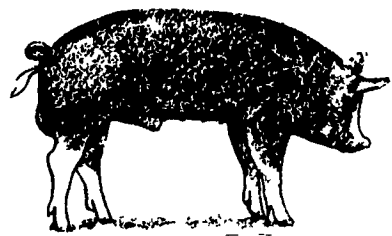
SOWS US 1-3 400-490 lbs 18 50-22 50, 515-685 lbs 22 50-26 75

BOARS 340-700 lbs 4 50-9 00

FEEDER PIGS 73 US 1-3 30-60 lbs 80 00-102 50, 90-180 lbs 37 00-70 00 --- per cwt

SHEEP 11 **SLAUGHTER LAMBS** few Choice 45-65 lbs 77 50-92 50 **SLAUGHTER SHEEP** few 17 50-25 00

GOATS 16 One Large Billy 72 50, one Large Nanny 43 00, Large Kids 26 00-42 00, Small 14 00-25 00 --- per head.



NATURAL DAIRY EXPO: IMPROVING PROFITS AND THE ENVIRONMENT
Roman and Lucy Stoltzfus, Spring Wood Farm, Kinzers, PA
July 15 - 10:00-4:00

This day-long field day will take place on one of the most diverse, holistic dairy operations in the state. Roman and Lucy milk 115 cows on their certified 250 acre organic operation. Graziers for 8 years, they utilize intensive rotational grazing, organic crop production practices, compost their manures, and recently made improvements in their barnyard nutrient management that allow them to irrigate pasture. Educational workshops will also be conducted by sponsoring organizations following lunch. The program will include:

- **Economics of Dairy Grazing** - Roman Stoltzfus, Spring Wood Farm
- **Mineralized, Energized Forages** - Bob Yanda, Midwest Bio-Ag
- **Healthy soils: What it Takes, Whatever the Production System** - Gary Zimmer, Blue Mounds, WI
- **Health from the Hedgerow: Nutritional & Health Benefits from Unconventional Forages** - Jerry Brunetti, Agri-Dynamics
- **Using Homeopathic Medicine for Prevention & Treatment in Dairy Cattle** - Edgar Sheaffer, DVM
- **Protecting Water Quality by Improving Barnyard Nutrient Management** - Leon Weber, Dairy Network Partnership

Sponsored by: PASD, PCO, Midwest Bio-Ag, Agri-Dynamics, Acres, USA
For More Information, contact PASA at (814) 349-9856

MILK WANTED

Lanco Dairy Farmers Co-Op Inc. needs 200 more dairy farmers to help grow out new contracts. We are run by a local non-salaried board. We do not take equity out of your check. We have 4 excellent local haulers.

Cost? 1¢/cwt

Let us show you how to take control of your milk supply with a better bottom line.

For more information, call (410) 658-7532

Float - a - Cow

LEE-MAR FARM
2724 Conestoga Creek Rd., Morgantown, PA

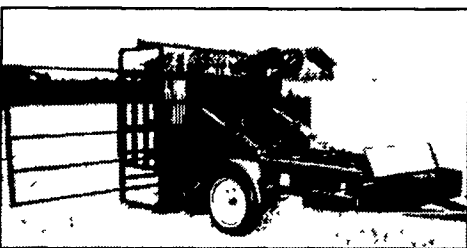


610-286-9052
Sales & Rentals

Give Your Down Cow Her Best Chance

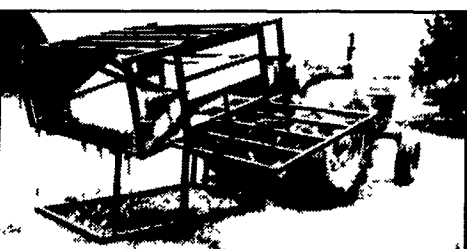
HEAVY DUTY HOOF TRIMMING TABLES

Endorsed by the International Hoof Trimming School of Wisconsin



- 2 10-inch lift belts
- 3500 lb axle with or without brakes

- 12-year building experience in the tables design
- 2"x2" tube frame chute
- chute measures 75"x28"x75" high
- 4" casters for cradle fold-up
- Two hydraulic cylinders for extra stability
- tool box for D C pump and battery protection
- manure grate to keep work area clean



- fold away side gate
- removable head board
- 45 min video from International Hoof Trimming School of Canada

Delivery Available

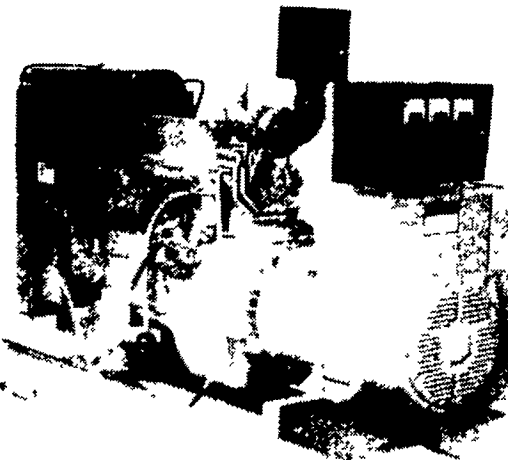
THREE MODELS TO CHOOSE

1. PORTABLE 2. STATIONARY 3. 3 POINT HITCH

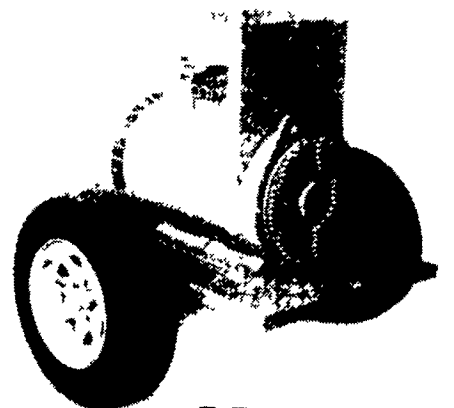
BERKELMAN'S WELDING

RR 7, AYLMEYER, ONTARIO, CANADA N5H 2R6
(519) 765-4230

Agricultural Generators



Automatic L.P. Gas, Diesel, Natural Gas Generators
5 to 2,000 KW



P.T.O. Generators
25 to 135 KW Units
In Stock!

Service - Rental - New - Used

PENN POWER SYSTEMS

Power Generation Systems Specialists

330 Fonderwhite Road, Lebanon, PA 17042

Call Leonard Martin

717-273-4544

Fax 717-273-5186