

**27 PETS**

Border Collie, male, champion bloodlines, nice markings, 3 years old. 717-530-0406

White silver tipped Persian cat needs good home, preferably with no other pets. Neutered, declawed, has shots. 665-7216.

Kennels, custom built using heavy materials. 570/822-7820.

**PUPPIES WANTED**

All kinds - AKC, Pure and Mixed  
Call Randy 570/822-2033  
I need & buy pups every week  
Will pick up - very dependable  
Fair price paid



**PUPPIES WANTED - All Breeds**

Shih-Tzu - 2 way mixes, especially  
Cockapoos, Lhasapoo and Yorkiepoo.  
**717-539-8493**  
in Pet Store.

**WANTED**

**AKC Registered Rottweiler Pups Top Prices Paid**  
**1-888-203-1348**  
If you have Rottweiler puppies for sale, call us before 8 a.m..  
cut out this ad

**WANTED**

**AKC Puppies and Cute Mixed Breeds For Resale.**

**Pampered Pup Kennels**  
**(800) 307-7877**

**WANTED**

Male & female  
AKC breeders.  
Prefer young stock.  
Must be in good health.  
**609/208-4772**

**WANTED PUPPIES**

Pure & Mixed Litter lots for resale for companion pets  
**JACK'S DOG FARM**  
**215-766-8802**  
or  
**215-766-8840**  
leave message  
Tues.-Sat. 9 am - 5 pm

**QUALITY DOG KENNELS**



**AND ACCESSORIES**

- Galvanized Tubing
  - Galvanized Wire
  - 33" Opening
  - Free Standing
  - Optional Plastic Floor
  - Insulated Dog Boxes
  - Kennel Bins
- (717) 355-7100**  
**Quality Fencing & Supply**  
147A Amlshtown Rd.  
New Holland, PA

**32 MISCELLANEOUS**

10 Square boxed crab traps, \$1/ea. 717-626-7382

Reed Prentice engine lathe, 16 in. swing by 50 in. centers w/taper attach., steady rest, follower rest, face plate, 4 jaw chuck, \$2000. 570-374-9982 570-374-5535

8 spit gas barbecue machine, rotisserie type. 717-768-3916

Coal stove: Warm Morning - model 400A, blower, thermostat. \$60. 717-865-5074 after 5pm

350 gallon LP gas tank & balance of contents, \$325. Must be moved soon. 717-445-6442.

2Dr Stainless Steel Commercial Refrigerator Works Good. \$795/obo. Perry County (717)536-3861.

Heavy Frick sawmill, \$5,500. 36' carriage, 6 head blocks, 2 saws, 190hp Cummins, 24' planer, cutoff saw, lumber rolls, sawdust rag, log turner and cleaner, generator. 609-455-5918.

175 Ton Dries & Krump press brake \$13,000/OBO. 6000# forklift, \$2,000. Surface grinder, \$1,000. Milling machine, \$500. 717-949-2539 leave message.

(2) 41'x108' alum. greenhouses, priced for quick sale, must move soon! Call for details. 717-768-7344

WANT clder press capable of pressing 200-500 gal/hr. 570-368-8624 or 570-433-4495.

Bridge Crane, 5/Ton, Single Girder Top, Running 45' 3' Span \$5,500. (717)354-3105.

**LIVE GAME FISH** Fingerlings and Adults, Large and Small Mouth Bass, Spotted and Rock Bass, Bream Crappies, Trout, Channel Cats, Bullheads, Walleyes, Perch, Minnows, Northern, Pickerel, Muskies, Red Gills, Mulllets, Carp, Eels, Turtles, Frogs, Israeli Carp Also Aquatic Plants and Water Lilies EDUCATIONAL CATALOG \$2.00

**Koi Specialties** Truck, Air and Parcel Post Delivery

**ZETTS FISH HATCHERIES**  
DRIFTING, PENNA. 16834  
Phone: 814-345-5357

Border collie pups, \$175/ females, \$150/ males. 717-667-6044.

AKC Bassett Hound Male, 13 Mo. Great for Stud. Red/White \$200. (717)530-5140.

4 year old AKC Boxer female, \$75. 717/445-9463.

Maine coon kittens-- CFA registered, home raised with TLC, great personalities, \$375. 610-869-8883.

Australian Shepherd pups, good working blood, double reg. merles/solids/tris, 717-375-4147.

Siberian Huskies, good adult breeders, AKC, 2 males, 6 females, some bred. 717-949-2723

Great Pyrenees puppies, AKC, 8 weeks, \$400. 410/343-3360.

Black Australian swans, 7yo, lay 2 times/yr. \$350/pr. 717-505-7072.

AKC German Shorthaired Pointer puppies, males & females, ready now. 570/992-2405.

Australian Cattle Dog puppies for sale, 7wks old 7/3/99, 717-299-6193.

AKC GERMAN SHEPHERD PUPPIES Excellent Bloodlines & Temperment, Pedigreed, Hip Guaranteed, All Shots, Warranted, All Colors (Have Pure Blacks), Raised & Bred by Professionals. 20 yrs Exp. (570)323-1494.

Reg. Border Collie pups, good working dogs & great pets. Red/white. 570-988-0369 No Sunday calls

**31 NOTICE**

For Rent: one bedroom apartment on dairy farm, would exchange rent for farm help. Lititz, Ephrata area. Non-smokers 717-626-5460.

FOR SALE: Used desks, files, chairs, fireproof files, etc. NOLT'S, Ephrata, PA 717-859-1617.

Chainlink Fence, 6' & 4' and gates. 717-564-2337.

PAYING UP TO \$250/sq.ft. for wide walk-smooth attic floor. We remove. Also, paying \$50-\$100 for pine and oak siding 1" & thicker. 800-765-3966.

Coolant: water soluble machining coolant, synthetic & regular. \$6/gal, retails for \$18/gal. 717-354-3105.

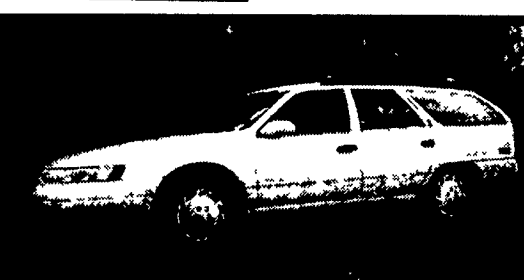
**Koi R-Us Fish Farm**  
Quality colorful Koi to beautify your pond  
All sizes - All patterns  
**215-536-6076**  
For pickup please allow 24 hr. notice

**Top Dollar Paid** for  
Wide Attic Flooring,  
Barn Granary Boards,  
Wide Roof Boards,  
Big Beams of  
Chestnut, Heart Pine,  
White Oak, White  
Pine, Interior Salvage  
of Early Stone of Brick  
House, Indian Doors,  
Hand-Hewn House  
Joists and Rafters,  
Summer Kitchens, Old  
Factories, Old  
Warehouses and Log  
Houses!!!  
**(610)857-1002**  
Anytime  
Pay the most &  
Travel the Farthest

**COMMERCIAL BUTCHER EQUIPMENT**  
Hobart Grinder Model 4222 **\$450**  
Globe Stimpson Meat Saw w/New, 1 HP Motor **\$500**  
Hollymatic, Super Patty Maker Model 54 **\$550**  
Butcher Table 13" Thick 4' Long, 32" Wide **\$500**  
Stainless Steel Cellophane Wrapping Table **\$350**  
**610-754-6298 Bill Heuer**

- Hermance 4 side molder, belt drive. Needs repair. The frame is broken or good for parts **\$350.00**
- Very large Woods 4 side planer. Three phase. This planer could make log home logs and beams. Needs some work. **\$2,200.00** This machine weighs about nine ton.
- 4 Cylinder Detroit Diesel stationary engine and power take off. Needs overhauled. **\$400.00**
- Old Yates American power feed rip saw, new carbide blades. **\$200.00**
- Air operated pop up style modern truss saw. Has about a 20 inch dia. blade **\$300.00**  
**(570) 473-7072**

**32 AUTOS**



1993 Ford Taurus GL SW/Blue Int., 3rd seat, V6, AC, AM/FM/Cass., Cruise, PW, PL, Exc. Cond. 53K \$7995  
**717/664-0494**

**BURKHOLDERS AUTO SALES**  
Milton, PA **570-437-3848**  
Delivery Available

**95 OLDS CUTLASS CIERRA SL**  
Black V6, Full Power Opt., 45,000 Miles  
**\$5,995**

**96 OLDS CIERRA SL SW**  
3rd Seat, Full Power Opt., 16,000 Miles, Blue, Retail Value \$10,500  
**Price \$8,550**

- 98 Toyota Pickup, 4x4, Auto, w/Air, 43K Mi., Black
- 95 Ford Windstar Van, Dark Green, 45K Mi., Full Power Options
- 95 Ford Aerostar, Green, 74K Mi.
- 97 Geo Prism, 14K Mi., \$6,950
- 95 Monte Carlo Z-34, 25K Mi., Dark Green

**35 TRUCKS AND TRAILERS**

**TRUCKERS**  
27' RATCHETS.....\$14.95  
WINCH STRAPS.....\$12.95  
RUBBER T. STRAPS...54¢  
**COMPLETE ROLL TARP SYSTEMS**  
**TIRONIE TARPS**  
**(800) 874-2928 • FAX: (570) 584-3127**



1992 F450 XLT with 12' bed, 460 5-spd., 15,000 lb., set up for towing, 1-owner, asking \$14,900 \$13,995  
**Kutz Farm Equipment**  
**570-345-4882**

**Used Truck Bodies**

Installed on NEW or Old Truck  
"Makes your Old Truck Look Like NEW!"  
• Dry Van Bodies 10' to 24' • Reefer Bodies  
• Flat Bodies  
(Completely Refurbished Bodies in Most Cases)  
- Same Day Service!  
**Phone 717-898-0683**  
**CHARTER ENTERPRISES, LTD.**  
270 Hostetter Road, Manheim, Pa

**89 Dodge LE**, 350 Dual Wheel Pickup  
360 4-Speed PS PB, PW PDL, Air, AM FM Cass with 8 Ft Dump Insert, 65 000 Miles New Radials Ex Cond  
**\$9,900**  
**A & J AUTO SALES**  
798 E Main St Rt 322 East  
Ephrata PA 17522 **717-733-2873**

**Mack DM885 Tandem Dump Truck.** Engine: 237 Mack. Transmission: Mack 6 Speed 2 Stck. Front Axle: 18,000 lb. Rear Axle: 58,000 lb Camelback Suspension. Side Frame Engine Brake. 20'6" Bed with 82" Sides. Price \$9,500.  
**Curry Supply Co., Curryville, PA**  
**1-800-345-2829**

**(2) 1994 4900 IH DT466**  
6 Spd, A/C, 24 Ft Van-Lift Gate (1 Truck 25,500 GVW, 1 Truck 33,000 GVW) Off Lease, Ex Cond

**18 FT. to 22 FT. REEFER BODY**  
For Storage or Over the Road, Cold Plate and Thermo Kings

**1987 F-700 FORD**  
V-8 5+2 Spd, 23,100 GVW (No CDL), 85,000 Mi., 18 Ft Van, Ex Cond  
**\$8,900**

**1993-1995 GMC**  
W-4 Turbo Diesel, Auto, A/C, 12'-15' Van, Pull-Out Ramp, 14,250 GVW, Clean

**1980 LN 9000 FORD**  
3208 Cat, 10 Spd, 46,000 GVW, 2500 Gal S/S Tank with Diesel, High Pressure Washer, Ex Cond

**1980 IH DT466**  
10 Spd, 33,000 GVW, 16 Ft Reefer Body Carrier Trans, Cold Unit, Very Clean

**MARTIN'S USED TRUCKS & EQUIPMENT INC.**  
560 Lampeter Rd., Lancaster, Pa 17602  
Robert Martin (717) 299-6200 • (717) 392-6266  
**WE SERVICE WHAT WE SELL**