



JUNE 28-JULY 4, 1999

DOG DAYS BEGIN, JULY 3.

**FULL MOON TO FIREWORKS...**

It's a busy week, from the Full Strawberry Moon on June 28, through Canada Day on July 1, and into the hot and sultry Dog Days, commencing July 3. For Independence Day, you've got the weekend for fireworks, feasts, and festivities. Think first of safety if you plan to view Roman rockets, and be sure children are well out of the way of sparks and trajectories. It's estimated that over 10,000 fireworks-related injuries are suffered every year, and over 1,300 of them are eye injuries. Let small children pop blown-up paper bags or ride over plastic bubble-wrap on their tricycles. Leave the fireworks to the community organizations and fire departments that have the training.



*Fire [is] the silent language of the star.*

- Conrad Aiken

**TIP OF THE WEEK**

To avoid infection, never put anything but cold water or ice on a blistering burn.

**STRAWBERRY TART**

- 1-1/3 cups flour
- 2 tablespoons sugar
- 1/8 teaspoon salt
- 1-3/4 sticks butter
- 2 egg yolks, beaten
- 4 tablespoons ice water
- 3 pints whole strawberries
- 6 ounces apricot jam



and form into a ball. Chill at least 20 minutes, then roll out. Press into the sides and bottom of a tart pan. Chill again in pan, then weight with beans and bake at 350° F for about 20 minutes, or until brown. Meanwhile, clean and hull berries. Heat jam over low heat. Arrange berries, tips up, in baked crust and brush with apricot glaze. Chill. **Makes 8 servings.**

www.almanac.com

**The OLD FARMER'S WEATHER PROVERBS**



*If the first of July be rainy weather, 'twill rain for four weeks altogether.*

*Dog Days bright and clear indicate a happy year; but when accompanied by rain, we hope for better times in vain.*

*As the Dog Days commence, so they end.*

**Leesport Livestock**

Leesport, PA  
Wednesday, June 23, 1999  
Report Supplied by PDA

**CATTLE 240...SUPPLY INCLUDED**  
104 SL. STEERS AND HEIFERS, 92 COWS, 17 BULLS AND 27 FEEDER CATTLE.

**SLAUGHTER STEERS: ONE HIGH CHOICE AND PRIME 2-4 1445 LBS. 66.50, CHOICE 2-3 1050-1420 LBS. 61.00-65.00, FEW SELECT 1-3 56.00-59.50, FEW STANDARD 1-2 49.50-55.50.**

**HOLSTEIN STEERS: HIGH CHOICE AND PRIME 2-3 1350-1470 LBS. 57.50-60.50, CHOICE 2-3 1255-1600 LBS. 52.25-57.50, SELECT 1-2 46.50-52.75, STANDARD 1-2 39.00-45.00.**

**HEIFERS: FEW HIGH CHOICE AND PRIME 2-4 1195-1325 LBS. 66.00-67.00, CHOICE 2-4 1035-1385 LBS. 60.50-64.00, FEW SELECT 1-3 54.75-57.00, STANDARD 1-2 49.50-52.00.**

**COWS: BREAKERS 75-80% LEAN 40.00-45.25, FEW LOW DRESSING 37.00-39.00, BONERS 80-85% LEAN 37.75-42.25, LOW DRESSING 35.00-37.50, LEAN 85-90% LEAN 28.00-38.25, SHELLS DOWN TO 25.00.**

**BULLOCKS: FEW SELECT 1-3 48.50-57.50.**

**BULLS: YG#1 1000-1900 LBS. 47.00-53.00, FEW YG#2 1020-1640 LBS. 36.00-47.75.**

**FEEDER CATTLE: STEERS MED. AND LARGE 1 430-525 LBS. 75.00-80.00, 775-875 LBS. 53.00-63.00, MED. AND LARGE 2 555-960 LBS. 47.00-57.00; HEIFERS MED. AND LARGE 1 300-800 LBS. 62.50-70.00, MED. 2 300-570 LBS. 40.00-55.00, LARGE 2 270-445 LB. HOLSTEINS 62.50-70.00.**

**CALVES: 149...VEALERS FEW GOOD AND CHOICE 145-320 LBS. 67.50-70.00, FEW STANDARD AND GOOD 75-105 LBS. 20.00-32.50, UTILI-**

**TY 50-100 LBS. 12.50-22.50.**  
**FARM CALVES: #1 HOLSTEIN BULLS 90-125 LBS. 90.00-120.00 WITH A FEW 85.00, 80-90 LBS. 65.00-75.00; #2 90-120 LBS. 40.00-95, 75-90 LBS. 30.00-55.00; FEW #1 HOLSTEIN HEIFERS 85-100 LBS. 170.00-225.00, #2 80-100 LBS. 75.00-105.00.**  
**BEEF TYPE BULLS AND HEIFERS 80-120 LBS. 75.00-105.00.**  
**HOGS: 56...BARROWS AND GILTS 45-50% LEAN 230-275 LBS. 32.00-33.25, LIGHTWEIGHTS 205-215 LBS. 29.50-32.25.**  
**SOWS: US#1-3 380-490 LBS. 22.00-29.25, 520-600 LBS. 26.25-30.50.**  
**BOARS: ONE 520 LBS. 10.50.**  
**FEEDER PIGS: 117...US#1-3 30-45 LBS. 45.00-70.00, ONE LOT 90.00, 60-80 LBS. 42.50-47.50 PER CWT.**  
**SHEEP: 40...SLAUGHTER LAMBS CHOICE 45-65 LBS. 80.00-90.00, 70-95 LBS. 76.00-87.50.**

**SLAUGHTER SHEEP: 15.00-35.00.**  
**GOATS: 29...ONE LARGE BILLY 69.00, MED. AND SMALL 32.00-38.00, FEW LARGE NANNIES 41.00-46.00, MED. AND SMALL 29.00-42.00, LARGE KIDS 25.00-42.50, SMALL 15.00-25.00 PER HEAD.**

**Lebanon Valley Livestock**

Fredericksburg, PA  
June 22, 1999

Report Supplied by Auction  
**STEERS LOW CHOICE 2-3 1170-1315 LBS. 61.00-62.75.**

**HOLSTEINS STEERS: CHOICE 2-3 1310-1350 LBS. 56.00-57.75.**

**HEIFERS: CHOICE 2-4 1025-1325 LBS. 61.00-62.75; SELECT 1-3 57.00-59.50, STANDARD 1-2 45.75-49.00.**

**COWS: BREAKERS 75-80% LEAN 40.50-43.00; BONERS 80-85% LEAN 38.25-40.00; LEAN 85-90% LEAN 36.75-38.00; SHELLS DOWN TO 32.00-36.00.**

**BULLS: YG1 1240-2605 LBS.**

**42.00-44.00.**  
**FEEDER CATTLE: STEERS 275-305 LBS. 70.00-75.00, 90-150 80.00.**  
**CALVES: GOOD 90-100 LBS. 44.00-70.00; UTILITY 70-85 LBS. 20.00-28.00.**  
**FARM CALVES: HOLSTEIN BULLS #1 95-115 LBS. 98.00-129.00, #2 95-115 LBS. 70.00-85.00.**  
**HOLSTEIN HEIFERS: #1 95 LBS. 167.50-192.50, #2 75-80 LBS. 132.50-145.00.**  
**SOWS: #1-3 390-530 LBS. 26.00-31.75.**  
**BOARS: 700 LBS. 9.00, 645 LBS.**

**New Holland Dairy**

New Holland Sales Stable  
New Holland, Pa.

Wednesday, June 23, 1999

Report Supplied By Auction

**112 DAIRY COWS, 117 HEIFERS, 19 BULLS. MARKET STEADY.**  
**LOCAL FRESH COWS 500.00-1450.00.**

**FRESH HEIFERS 685.00-1375.00, 3 AT 1625.00-1675.00.**

**LOCAL SPRINGERS 825.00-1385.00.**

**UPSTATE LOADS FRESH 1075.00-1500.00, FEW 1600.00-1750.00.**

**BETTER FRESH COWS 1600.00-1750.00.**

**26 HEAD FRESH 1075.00-2075.00.**

**SPRINGING HEIFERS LARGE 1285.00-1460.00, SMALL 785.00-1100.00.**

**SHORT BRED HEIFERS 685.00-1050.00.**

**REGISTERED HEIFERS 1025.00-1600.00.**

**OPEN BREEDING AGE HEIFERS 700.00-860.00.**

**SMALL OPEN HEIFERS 485.00-650.00; SMALLER 260.00-410.00.**

**BULLS 385.00-650.00, PUREBRED 385.00-750.00.**

**MILK WANTED**

Lanco Dairy Farmers Co-Op Inc. needs 200 more dairy farmers to help grow out new contracts. We are run by a local non-salaried board. We do not take equity out of your check. We have 4 excellent local haulers.

**Cost? 1¢/cwt**

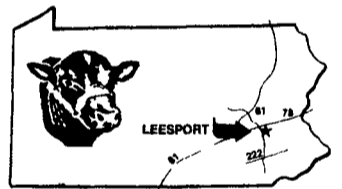
*Let us show you how to take control of your milk supply with a better bottom line.*

For more information, call (410) 658-7532

**LEESPORT FARMERS MARKET**

LEESPORT, BERKS COUNTY, PA 19533 (610) 926-1307

**LIVESTOCK AUCTION EVERY WEDNESDAY - 1:00 P.M.**



Farmers Market 9:00 AM to 8:00 PM  
Flea Market 7:00 AM to ??

Serving Eastern Pennsylvania for 51 years.

**WHITWASHING with ADVANTAGE FARM WHITE**

- DRIES WHITE • NO WET FLOORS
- IS COMPATIBLE WITH DISINFECTANT AND FLY SPRAYS
- DOES NOT RUB OFF EASILY
- WASHES OFF WINDOWS & PIPELINES EASILY



**BARN CLEANING SERVICE AVAILABLE WITH COMPRESSED AIR**

To have your barn cleaned with air it will clean off dust, cob webs & lots of the old lime  
This will keep your barn looking cleaner & whiter longer

**CALL US ABOUT ON THE FARM FLY CONTROL**

Serving Southeastern Pa. And More

**BEITZEL'S SPRAYING**

Witmer, PA 17585 717-392-7227 or

Toll Free 1-800-727-7228 7:00 AM to 5:00 PM

CERTIFIED COMMERCIAL APPLICATORS

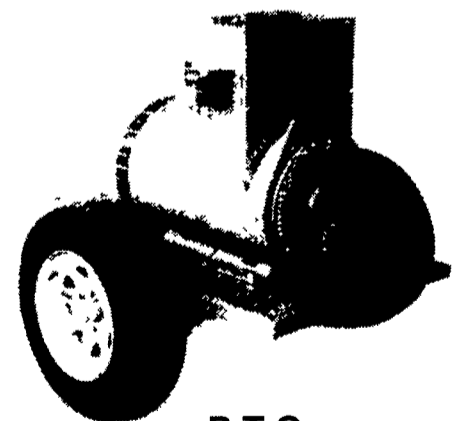
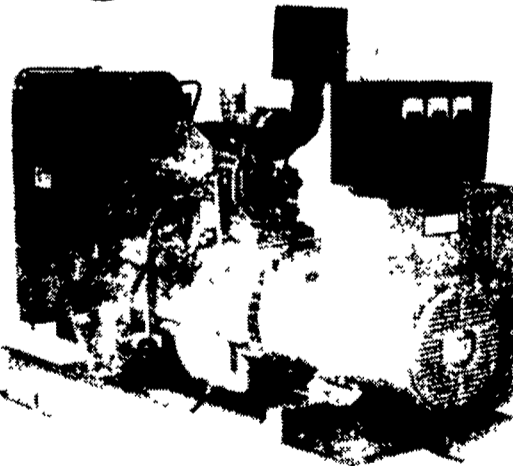
LICENSED 37 YEARS EXPERIENCE INSURED

5 Trucks For Air Cleaning And Whitewashing

RADIO DISPATCHED TRUCKS

Barn Spraying Is Our Business, not a sideline.  
Spraying Since 1961

**Agricultural Generators**



Automatic  
L.P. Gas, Diesel, Natural  
Gas Generators  
5 to 2,000 KW

P.T.O.  
Generators  
25 to 135 KW Units  
In Stock!

Service - Rental - New - Used

**PENN POWER SYSTEMS**

Power Generation Systems Specialists

330 Fonderwhite Road, Lebanon, PA 17042

Call Leonard Martin

717-273-4544

Fax 717-273-186