

KELLER BROS.

(Buffalo Springs) Lebanon, PA

717-949-2000 or 1-800-363-2767

LEBANON COUNTY'S HEAVY DUTY TRUCK HQTRS.
1999 F250's, 350's, XL, XLT & Duallys 4x4 & Gas or Turbo Diesels

FORD FORD

1995 FORD F250 SUPER CAB XLT 4x4, Diesel, Black & Silver, Just Traded



1997 FORD F250 XLT, DIESEL AT, A/C, 4x4, 34,000 Miles, Just Arrived



1996 FORD E150 CONVERSION VAN

5.8L V8, Raised Roof, Dual, A/C, TV, VCP, Trifold Rear Seat, Like New, Only 17,000 Miles



1997 FORD EXPEDITION XLT 5.4 V8, Dual AT, 3rd Seat, SAVE THOUSANDS



1995 CHEV 2500 4X4 SILVERADO V8, 5 Spd., A/C, Low Miles, Dark Green

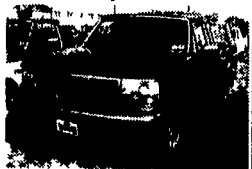


1999 FORD F350 CREW CAB DUALLY 4x4, XLT, 7.3 Turbo Diesel, Brand New 3-In-Stock \$37,000 Ea.

1999 FORD F250 SUPERCAB 4x4 XLT, Short Box, 7.3 Turbo Diesel, Only 195 Miles



1995 FORD F150 XLT, 4X4 V8, AT, A/C, Matching Cap, Very Clean



1995 GMC 2500 SUPERCAB 4X4 SLE, AT, Green & Tan.



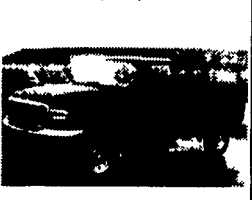
1997 FORD 4X4 RANGER SUPER CAB XLT, AT, A/C, Most Power Options, Low Mileage, Black, Don't Miss This One!



1999 FORD F350 REG. CAB 4x4 6-Speed, 7.3 Power Stroke Diesel, A/C



1999 FORD F350 REG. CAB 4x4 V10, AT, A/C



1999 FORD E350 SUPER CARGO VAN 7.3 Power Stroke Diesel, Dual Captain Chairs, AT, A/C, C.T, PW, PL, Trailer Tow Pkg.



1996 FORD F250 SUPER CAB XLT 4x4, AT, A/C, PW, PL, 7.3 Power Stroke Diesel



1995 FORD E350 CLUB WAGON 12 Passenger, XLT, AT, Dual Air, PW, PL, Very Clean



1993 FORD 4X4 EXPLORER XLT V8, AT, A/C, Leather



1993 FORD RANGER XLT 4x4, AT, A/C, Sharp Truck, Low Mileage



1990 GEO TRACKER 4x4, AT, Blue Manager's Special \$4,450



1989 FORD E150 CONVERSION VAN 7 Passenger, V8, AT, A/C, Very Clean



KELLER BROS. FORD HAS SERVED CENTRAL PENNA. AREA FOR MORE THAN 78 YEARS.

FORD FORD FORD FORD FORD FORD FORD

35

TRUCKS AND TRAILERS

Anthony L.

LANDIS AUTO SALES

3394 Division Hwy., New Holland, PA 17557 • (717) 355-0644



1994 Chevrolet 1500 Silverado Ext. Cab, 6.5 Turbo Diesel, AT, PW, PDL, AC, Tilt, Cruise, Cassette, 99,800 mi., Immaculate! \$13,900



1990 Chevrolet 500 Silverado Longbed, 4.3 Liter, 5 Spd., PS, PB, A/C, Cruise, T.H., Dark Blue, 92,000 Mi \$6,900

1968 - 1998

KEEN 30 YEARS

KATIE COURT HARRISBURG, PA 17109

(717) 564-4511 FAX (717) 564-4519

TRUCK RENTAL & LEASING

(3) 1995 PETERBILT 378 Cat 3406E 435/450 HP w/Jake Brake RTLO-167178B, 18 Speed, DS-402, Ratio-3.90, Tires 275/80R 22.5, 63" Flat Top Sleepers, A/C, P/S, AM/FM Cassette Full Gauges, Moto Mirrors, Air Dryer, 24" Air Slide 5th Wheel, 1/2 Fenders Steel Budds. "Well Maintained, Excellent Condition"



(2) 1994 PETERBILT 378 DETROIT DIESEL S60 430 HP w/JAKE BRAKE RTLO-16718B, 18 Speed, DS-402 Ratio-3.55, Tires-275/80R 22.5, 63" Flat Top Sleeper, A/C, P/S, AM/FM Cassette Full Gauges, Air Dryer, Moto Mirrors, 24" Air Slide 5th Wheel, 1/2 Fenders Steel Budds "Great Condition, Well Spec'd"



1994 VOLVO WCA64T Cummins N-14 350 HP RTX-14710C, DS-402 Ratio 3.70, Air Ride Cab, Air Ride Suspension, Air Dryer, Dual 100 Gal Tanks, 24" Air Slide 5th Wheel, Moto Mirrors, A/C, P/S, Full Gauges "Snappy Day Cab" Asking \$27,900



1993 KENWORTH T600 Caterpillar 3406B 350 HP w/Jake Brake, Fuller RTX-14609B, Eaton DS-402 40,000 Lb Ratio 4.11 Air Ride Suspension, Air Slide 5th Wheel, Tires-275/80R 22.5 8H Budd, Dual 100 Galon Tanks, Midco Fuel Heater, Midland Leveling Valve, Full Fairings, Midland Air Dryer, A/C, P/S, AM/FM Stereo, Dual KW Moto Mirrors, 42" Sleeper, Many Spec's Wheelbase 206", "Low Mileage, Local Truck".



(2) 1992 WABASH SA102CW 48'x102" Height 13'6" 110" AT Front, 111-7/8" Rear, Swing Doors, 8 Hole Hub, Steel Budds, Tires 295/75R 22.5 Binkley 51,000 Lb Landing Gear, Logistics Posts On 12' Centers, Diamond Threshold Plate

AL HAMILTON MANAGEMENT COMPANY

P.O. Box 157 • 55 Doe Run Road • Manheim, PA 17545

Phone: 717-665-7145 • Fax 717-665-2137

★★★ "CLEANEST TRUCKS AROUND" ★★★



1988 FORD L8000, New 10' Dump, 7.8L, 240 HP, 7-Speed, 39,000 GVW, Custom Int., Excel. Cond. \$20,500.



1985 INT. 2300 NGW 10' Dump Bed, L-10 Cummins, 7 Sp. Trans, 35,000 GVW, P.S., Air Brakes, A/C \$19,500



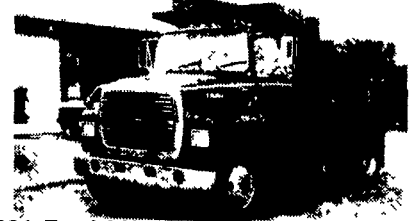
1987 FORD F350, 8' Dump Body, 7.5L Engine, 4 Sp. Trans, 51,000 Original Miles, Exc. Cond. \$11,500.



1988 MACK, 300 HP, 6 Sp., 58,300 GVW, Exc. Cond., WB 240, CA 164. This truck is original. \$29,500.



1991 FORD LN8000 C&C, 7.8L Ford, 215 HP, 5-Spd Trans, 2 Spd, 234 WB, 168 C.A., 35,000 GVW, Exc. Cond. \$18,500.



1991 Ford LN9000, L-10 Cummins, 9-Sp. Trans., 34,700 GVW, New 10' Dump Bed, P.S. - Air Brakes \$26,500.



1997 FORD F-350, Auto, Trans., AC, Power Stroke Diesel, 11,000 GVW, 28K mi., 12' Box, \$24,500.



1990 INT. - DT 466, 210 HP, 6 Sp., WB 236, CA 184, 35,000 GVW, AC. \$18,500.