

**FOR NEW AND USED  
CONSTRUCTION  
EQUIPMENT PARTS  
AND ATTACHMENTS**

CALL  
**H.E.L.P., INC.**  
**(717) 469-0039**  
1-800-446-0505

Additional 15% Off of All Parts  
In Stock w/Reference To This Ad

Specializing In Caterpillar  
Parts also available for Case,  
John Deere, IHC, Fiat, Etc.

**HEAVY EQUIPMENT  
LOADER PARTS, INC.**

10070 Allentown Blvd. Grantville, PA 17028



White 2-63 6000 lb.  
Rough Terrain Forklift  
(717) 866-6390 Ext. 384



1996 Ford 575D Cab, 4WD, Ext.  
Hoe, 5 Buckets, Flip Pads, Excellent  
Cond., 1400 Hrs. **\$40,000**  
**610-363-1944**

**BACKHOES**



- 3-87 JD 210C - 4 In 1  
Ext. Hoe \$16,500
- 85 Case 580 E 4 In 1 \$15,500
- 88 JCB 1400B Ext. Hoe \$16,500
- 83 Int. 260A, Diesel \$11,500
- 87 Case Int. 385 Mid Size \$15,500

**LOADERS**



- Hough H-80 Art \$15,500
- Clark 35C Art \$18,500
- AC 645 Art \$9,000
- Case W20C P.O.A.
- Case W7E Straight \$8,500

**TRACTORS**



- Ford 2110, 340, 3600, 5000  
\$3,500 & Up
- Int C140, 385, 84 Hydro  
\$2,750 & Up
- John Deere, Gas, 302, Sickle  
Bar \$5,500.

**FORKLIFTS**



- 4-7000 Lb. Toyota Diesel  
\$11,500-\$12,500
- 4000 Lb. Toyota, Gas \$7,250
- 5600 Lb. Toyota, Elec. \$5,500
- 3600 Lb. Toyota, Elec. \$4,500
- 4000 Yale, Gas \$5,500

**TRACTOR  
LOADERS**



- Ford 2610 Diesel \$7,500
- Ford 445 Diesel \$9,500
- Ford 655 Diesel 4x4 \$11,500
- Int. 2400B Gas \$5,500

**GRADERS**



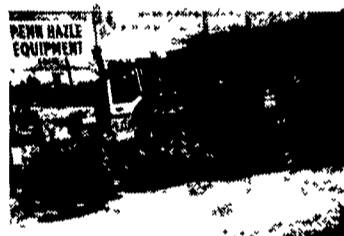
- Champion Art \$16,500
- Fiat Allis, Art \$23,500
- 2 - Austin Western  
\$6,500-\$7,500
- 5 Huber F-1700 \$8,500

**BELT LOADER**



Athey Belt Loader, Gas \$5,500

**503L**



Gallon 503L, Diesel, All Hyd.,  
Reverser \$15,500

**BOOM MOWERS**



- Ford 6600 Diesel - Terrain  
King Boom Mower \$11,500
- MF 30, Gas Terrain King  
Boom Mower, Nice \$9,500
- Ford 515 Gas, Boom w/Sickle  
Bar \$7,500

**DUMPS**



- Off Road Dumps**
- 2 - Int. 2500 DT-466 \$4,500
- 2-Int. 1700 DT-466 \$3,000
- Ford Diesel &  
Gas \$2,000 & Up
- All Run & Dump, Rusty

**BOOM MOWERS**



Gallon T-500 w/Rotary Boom  
Cutter, Twin Detroit Diesel;  
P/S \$11,500

**INTERSTATERS**



3-88 Case Int. 885W Mott  
Interstate Mower System  
800-1500 Hrs.  
\$14,500-\$16,500

**CONSTRUCTION EQUIPMENT**



Komatsu D31's From \$19,000  
14,000 Lb., 6-Way Blade

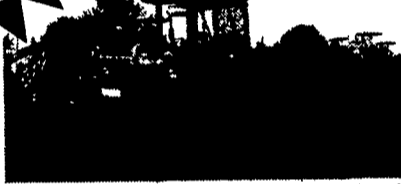
Financing  
Available Low  
Rates/Payments  
Ask About Lease  
Purchases  
Delivery  
Available



Cat E200B  
42,000 lb.



PC75UU-1 From \$19,000  
15,400 Lb., Cab, Blade



MST600 Dump Carrier, Rubber Tracks

**DOZERS**

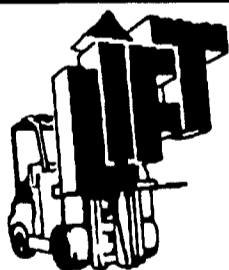
- Komatsu Dozers.....from \$12,900
- Komatsu D41 Dozer (6-way) Coming In \$42,900
- Cat D3 (6-way).....from \$22,900
- Other dozers..... from \$7,900

**EXCAVATORS**

- Komatsu PC28UU 6,000LB.....from \$9,900
- Komatsu PC50UU 11,00LB.....from \$11,900
- Komatsu PC60, Cab, 13,000LB.....from \$17,900
- CAT E110's, 25,400 Lb..... from \$21,900
- CAT E120B's, 28,300 Lb..... from \$27,900

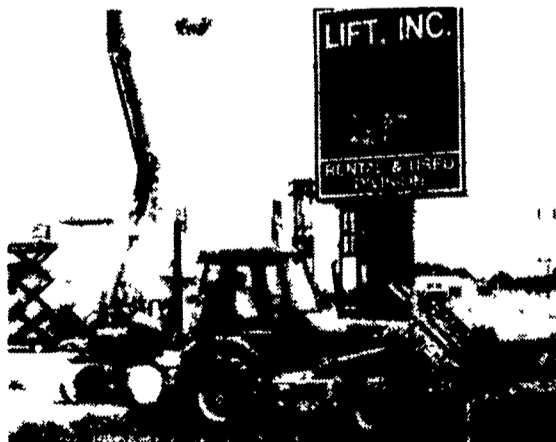
**Beverage Tractor and Equipment, Inc.**

Route 1 Box 494B Stuarts Draft, Virginia 24477 - U.S.A.  
1-800-296-3325 Email beverage@cfw.com Fax (540) 337-0761

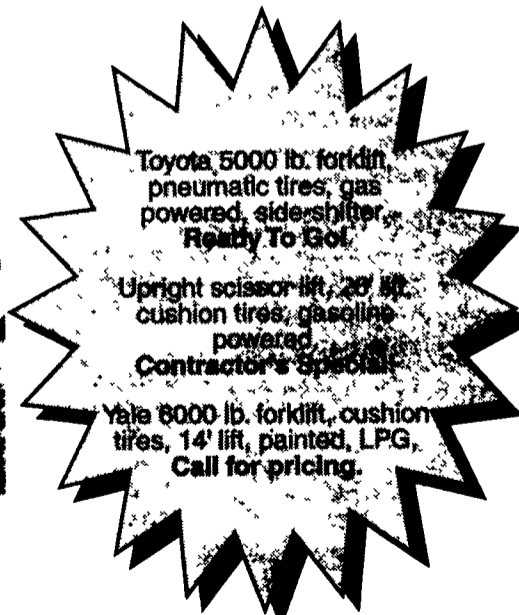


**LIFT, INC.**

**\*Specials of the Month\***



1995 Case, Model 570LXT  
air condition, 82" bucket width, Rops cab,  
diesel powered. "This unit has very low  
hours and is in excellent condition!"



Call: **Sandy Napoli** or **Neil Giampietro**  
**(717) 492-9750**

**"WE HAVE HUNDREDS OF USED FORKLIFTS AND  
SCISSORS LIFTS AVAILABLE FOR SALE OR RENT!"**

**PENN HAZLE EQUIPMENT CO., INC.**

RT. 309 HAZLETON, PA 18201

(570)455-5091 ANYTIME FAX (570)455-1960