



PRESIDENT'S REPORT
Dan Wilkinson
President

With the spring planting season coming to a close and the summer harvest straight ahead, I wanted to remind everyone of the important dates coming up:

- June 30 - Summer conference registration due.
- July 2-4 - National Summer Business Meeting (Las Vegas).
- July 10 - Summer Conference, Grantville Holiday Inn.

Although this year's conference is only one day, it will include many interesting tours and sights around the Grantville area. We will conclude with a dinner and race at Penn National Race Course. Include this in your summer plans!

The 1999 National Institute is coming together nicely and lots of volunteers are needed for various functions. What will you volunteer to help with? Call any of the committee chairpersons and let them know you are willing to help out.

Looking forward to seeing you at Grantville.

Scouting Workshop

REHRERSBURG (Berks Co.) - An alfalfa field scouting workshop is scheduled Tuesday, June 22, from 10 a.m.-11:30 a.m. at the Samuel and Sandra Forry Farm near here.

Mena Hautau, Berks County extension agronomic agent, will join the farmers. Discussions on common pest problems, sweeping, and determining thresholds will be included.

Each participating "farm" will receive a sweep net to utilize for the day's activity and future scouting of their fields. It will serve as a basis for management decisions and refresher of insect life cycles.

Directions to the Forry Farm: travel north on Rt. 419 (from New Schaefferstown Road). At the intersection of Strausstown Road, turn left toward Rehrersburg, then right onto Midway Road. The Forry's driveway is the first on the left.

The Tulpehocken Young Farmer family picnic is scheduled for Sunday, July 18, at Wilbur and Arlene Hershey's.

Dates to note for Tulpehocken Young Farmers:
 • July 23 - Plastic Pesticide Container Schedule Recycling; 12:30 p.m. - 3 p.m. Ag Chem, Bethel; 9 a.m. - 11:30 a.m. Reading Bone Agway, Leesport; 12:30 p.m. - 3 p.m. Anthony's Mill, Strausstown.



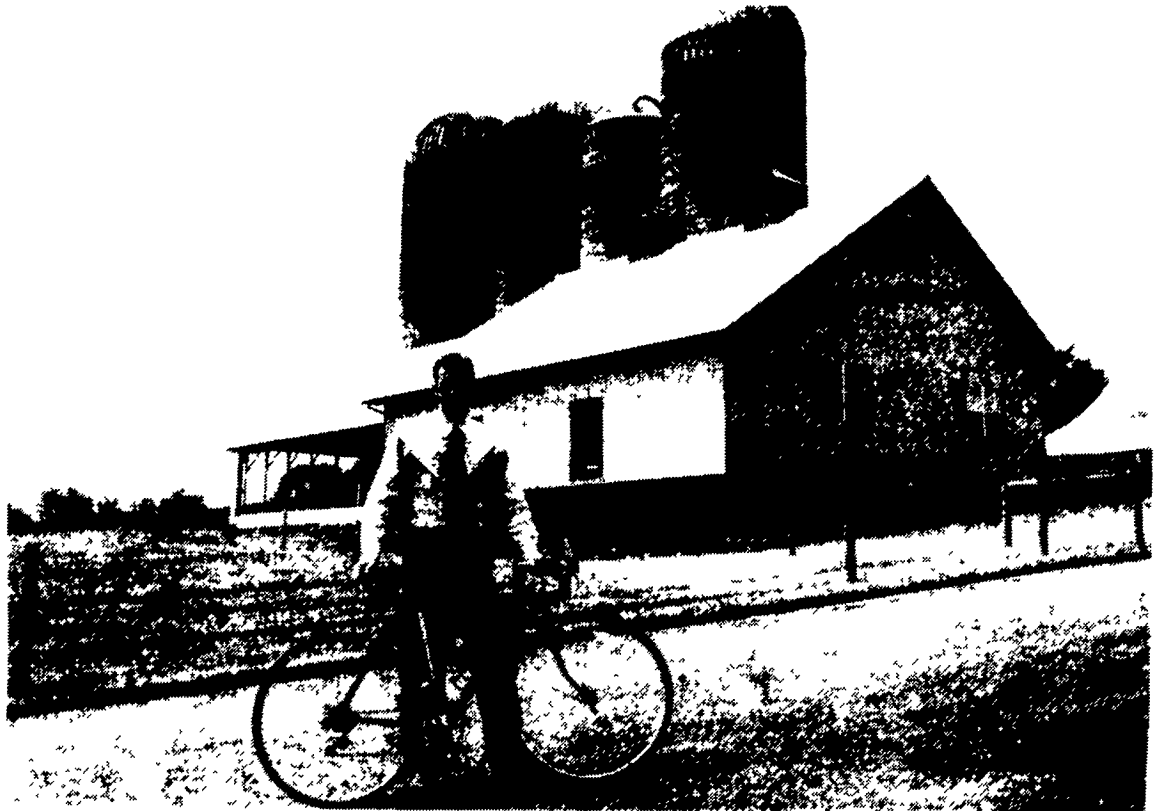
Pedal to Preserve Bike Tour

LANCASTER (Lancaster Co.) - Lancaster Farmland Trust's third Pedal to Preserve bicycle tour will be held on Saturday, June 26, 1999. Registration begins at 8 a.m. The tour accommodates leisure and competitive cyclists, offering both a 21-mile and 43-mile ride through some of eastern Lancaster County's most beautiful farmland. This year's ride begins and ends at Garden Spot High School, 669 East Main Street, New Holland, and showcases farms that have been preserved forever from development.

Registration is \$20 in advance or \$25 on ride day. All registrants receive a free event T-shirt and water bottle. Families are encouraged to ride along with PA Deputy Secretary of Agriculture Christian Herr, the honorary chairperson of Pedal to Preserve. Children 12 and under ride free when accompanied by an adult. Riders are also encouraged to obtain pledge sponsorships and qualify for valuable prizes. Pedal to Preserve attracted 300 riders last year. Proceeds fund farmland preservation efforts

through Lancaster County - which was recently named one of America's 11 most endangered places by the National Trust for Historic Preservation. For more information, contact Jessica Abernathy at (717) 293-0707 or jess@savelancasterfarms.org

Lancaster Farmland Trust is a private, non-profit organization that has worked to preserve Lancaster County's productive farmland, thriving agricultural economy, and rich farm-related heritage for over a decade.

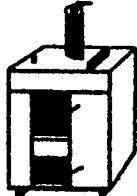


Pennsylvania's Deputy Secretary of Agriculture Chris Herr has been named honorary chairman of the Lancaster Farmland Trust's Pedal To Preserve bicycle benefit ride. Herr posed with a bicycle in front of a barn this week to promote the event and lend his influence to the effort to raise farm preservation moneys for the Trust. Herr said he supports the effort because he is from Lancaster County and wants to save the quality of life inherent in communities where beautiful productive farms are preserved. Photo by Everett Newswanger, editor.

Mahoning Outdoor Furnaces

Cut Your Heating Costs With Our Outdoor Furnace

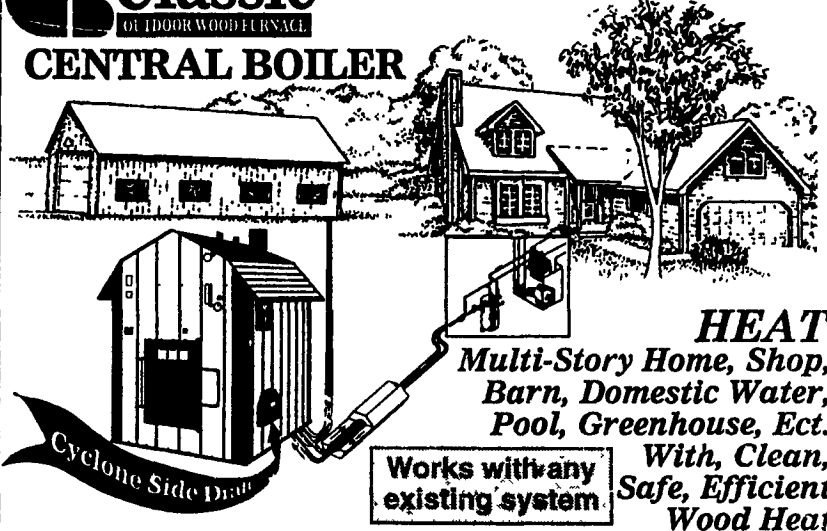
- Standard Model Burns Wood, Coal or Wood by-products
- Multi-Fuel Model Burns Wood, Coal, Oil or Gas



Adapts to any existing heat system Installation & Accessories Available

(717) 624-3639 (717) 624-4188

Classic
OUTDOOR WOOD BURNING
CENTRAL BOILER



HEAT
Multi-Story Home, Shop, Barn, Domestic Water, Pool, Greenhouse, Ect. With, Clean, Safe, Efficient Wood Heat.

Works with any existing system

ELIMINATE HEATING BILLS!

KENNETH V. STAUFFER
R.R. #1 Box 307, Mt. Pleasant Mills, PA 17853
PHONE (717) 539-4606 FAX (717) 539-4703
1-888-539-4606
Please Call For Free Information!

ATTENTION

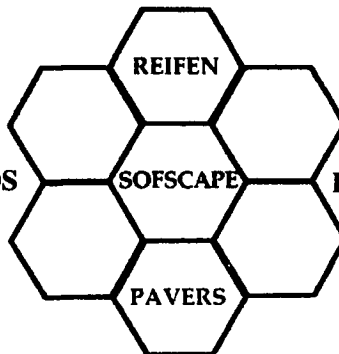
LANDSCAPERS...ARCHITECTS...BUILDERS...CONTRACTORS...
RENOVATORS...DAIRY FARMERS...AND...EQUESTRIAN

YOU ARE INVITED TO EXPERIENCE OUR NEW PRODUCT LINE AT OUR FACTORY SHOWROOM

PATIOS

POOL SURROUNDS

PLAYGROUNDS



STABLES

INDUSTRIAL APPLICATIONS

WALK WAYS

ATTRACTIVE...SAFE...DURABLE...6 DIFFERENT COLORS

THE RECYCLED ALTERNATIVE TO CONCRETE - BRICK - WOOD - ASPHALT
MADE FROM 100% RECYCLED CAR AND TRUCK TIRES

TECHNICAL & SALES STAFF WILL BE ON HAND TO ANSWER QUESTIONS.

FRIDAY JUNE 25, 1999 4 pm - 8 pm

SATURDAY JUNE 26, 1999 9 am - 12 pm

LIGHT REFRESHMENTS WILL BE SERVED

SPECIAL SHOW PRICING

REIFEN RUBBER CO., INC.
199 WEST STIEGEL STREET
MANHEIM, PA 17545
(717) 665-1428