

LEFEVER BROS. CHEVROLET CHEVY TRUCKS GEO

YOUR DIRECT LINE TO GENUINE GM PARTS

(800) 533-3837

When you call the number listed above, you'll reach our wholesale parts specialists, who can help you keep your GM repair work moving quickly

Ask about

- Specializing in GM Medium Duty Trucks, Current and Obsolete.
- \$500,000 Parts Inventory.
- Parts Locator for Those Hard to Find Items.
- We Ship Anywhere, Local Delivery Available.
- Experienced, Knowledgeable Personnel.

Mon, Tues, Thurs Fri

7:30 a.m. - 4:30 p.m.

Weds 7:30 a.m. - 8:30 p.m.

Major Credit Cards Accepted

(717) 432-9697

Quality Dealer Since 1921

406 U.S. Rt. 15, Dillsburg PA 17019



We want your business.



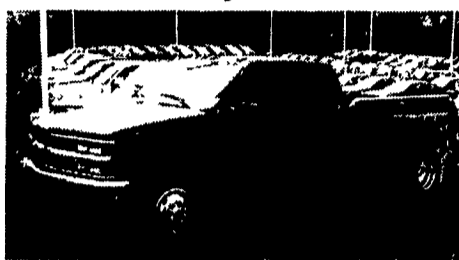
OUTTEN TOTAL TRANSPORTATION CENTER



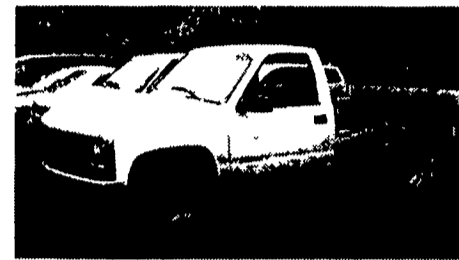
99 CHEV G15 CARGO VAN
AT, A/C, PS, PB, Panel Side Doors,
Side & Rear Glass, 11,000 Miles
\$18,995



99 CHEV K3500
Crew Cab Dually 4x4, 454 Gas,
Conversion Pkg.



(2) 99 CHEV K2500 EXTEND CAB
(1) 454 V8, (1) 6.5 Turbo Diesel
Both Conversion Pkg., With Most Options



99 CHEV C2500
Cab & Chassis, AT, A/C
Build to your Specs

Outten Hamburg Rt. 61, Hamburg PA
1-800-451-2333 • 610-562-2216

RIVER'S TRUCK CENTER

ROUTE 24 - CAPE HORN RD.
RED LION, PA. 17358
(717) 244-4903
Now Providers of New Western Star Trucks, Slots Available



1998 MITSUBISHI FM
22' Dry Van w/Tuckaway
Liftgate, Diesel, 6 Speed,
A/C, PS, 25,995 GVW,
80,000 Miles, Clean



2000 Western Star 4964
FX, TriAxle 17 1/2
Aluminum Dump, Cat C-12
430 HP, 8LL, Air Ride,
23,800 Light Weight
Call For Details



1991 MACK CH612,
S/A, arride, 300, 9-speed,
A/C, PS,
Call For Details
Also (1) SPRING RIDE
Similar Spec's



1979 MACK Tandem
Axle Dump,
300 HP, 9 Speed, PS,
Call For More Details
\$11,900

BRUBAKER'S AUTO SALES

PH. 717-866-5237

Hours: Mon.-Fri. 8 a.m. - 9 p.m.; Sat. 8 a.m. - 6 p.m.

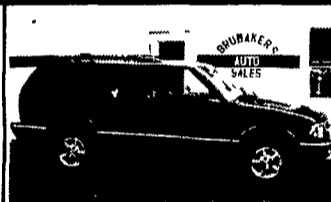
ROUTE 422
MYERSTOWN, PA



97 Ford F-150 XLT Ext. Cab 4x4 "Off-Road" Black, 4.6 V8, AT, AM-FM Cas, AC, PW, PL, CC, Tilt, Keyless Entry, Airbags, 58,530 Mi **\$18,900**



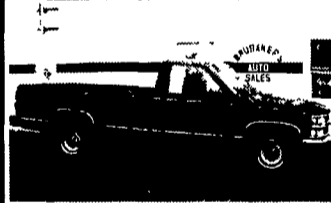
97 Mercury Mountaineer, AWD, Red/Gray V8, AT, AM-FM Cas, AC, PW, PL, CC, Tilt, Pwr Sunroof, Pwr Seats, Airbags, 78,700 Mi **\$15,900**



97 Chevy Blazer LS, 4 Dr 4x4 Black 4.3 V6, AT, AM-FM Cas, AC, PW, PL, CC, Tilt, Pwr Seat, Keyless Entry, Airbag, 73,415 Mi **\$14,600**



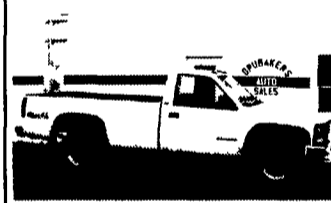
96 Chevy 1500 Cheyenne 4x4, Ext Cab Green 305 V8 5 Sp AM FM Cass AC CC Tilt 61,831 Mi **\$16,900**



95 Chevy 2500 Cheyenne, 2 WD, Maroon, 350 V8 5 Spd., AM-FM Cas, AC, CC, Tilt, Airbag 78,505 Mi **\$9,900**



94 Dodge Grand Caravan, 7 Pass, Green V6, AT, AM-FM Cas, AC, Airbags, 35,680 Mi **\$9,400**



94 GMC 3500 SIERRA SL, 4x4, Turbo Diesel, White, AT, AM-FM Cas, AC, 61,180 Mi **\$15,900**



93 Jeep Wrangler 4x4, Softop Teal 4.0 6 Cyl AT Tilt 84,103 Mi **\$7,900**

AL HAMILTON MANAGEMENT COMPANY

P.O. Box 157 • 55 Doe Run Road • Manheim, PA 17545

Phone: 717-665-7145 • Fax 717-665-2137

★★★ "CLEANEST TRUCKS AROUND" ★★★



1990 LN8000 C&C, 7.8L, 210HP, 6-Speed Trans, Custom Cab, AC, 234 WB, 168 C.A., Exc. Cond. **\$15,500.**



1988 FORD L8000, New 10' Dump, 7.8L, 240 HP, 7-Speed, 39,000 GVW, Custom Int., Excel. Cond. **\$20,500.**



1985 INT. 2300 NGW 10' Dump Bed, L-10 Cummins, 7 Sp. Trans, 35,000 GVW, P.S., Air Brakes, A/C **\$19,500**



1993 MIDLINER CS SERIES, A.C., 6 Sp. Trans., WB 232, C.A. 158. 26,000 GVW **\$17,500.**



1988 MACK, 300 HP, 6 Sp., 58,300 GVW, Exc. Cond., WB 240, CA 164. This truck is original. **\$29,500.**



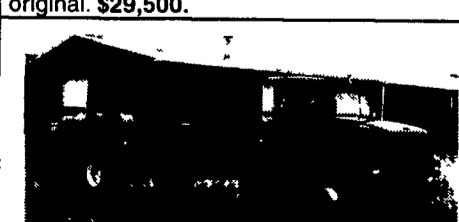
1991 FORD LN8000 C&C, 7.8L Ford, 215 HP, 5-Spd Trans, 2 Spd, 234 WB, 168 C.A., 35,000 GVW, Exc. Cond. **\$18,500.**



1991 Ford LN9000, L-10 Cummins, 9-Sp. Trans., 34,700 GVW, New 10' Dump Bed, P.S. - Air Brakes **\$26,500.**



1997 FORD F-350, Auto, Trans., AC, Power Stroke Diesel, 11,000 GVW, 28K mi., 12' Box, **\$24,500.**



1990 INT. - DT 466, 210 HP, 6 Sp., WB 236, CA 184, 35,000 GVW, AC. **\$18,500.**