

**114 COW BARN** with double 6 parlor with jars, 4 unloading silos and 1000 gallon tank. 40x80 hay barn. 48x70 machine shed. 200 acres with 135 tillable and long frontage on noted trout river with famous swimming hole. Attractive white Colonial home with 2 baths and 2 year old furnace. **\$194,000.**

### Mort Wimple Associates

Real Estate Sales - Management

**FREE CATALOGUES**  
Internet Page: <http://www.albany.net/~wimple/>  
U.S. ROUTE 20  
SLOANVILLE N.Y. 12160  
(518) 875-8355  
FAX: (518) 875-8749

**Sullivan County - Country** home on 2 acres with stone fireplace in Living Room. Wood shop plus garage and a great view. **\$89,900.00**



**Potter County - 170 ACRES** plus a home, currently in use for hunting, fishing and reservation dining. Could be used for private corporate use or a home, abundant wildlife, liquor, restaurant and regulated preserve hunting licenses, confidential listing **\$750,000.00**

**Relocating?** We service Lycoming, Union and Sullivan Counties.



205 E. Water Street,  
Muncy, Pa. 17756

**COLONIAL REAL ESTATE**  
**1-800-326-0210**

### FOR THE BEST INTERNET FARM & RURAL PROPERTY MARKETING

CLICK HERE  
[www.cbur.com](http://www.cbur.com)

or  
Call Don Myers or Dale Sherman at  
**800-669-4925**



**UNIVERSITY REALTY**

126 E. Foster Ave., State College, PA 16801

### CALL COLDWELL BANKER

View These Farms On-Line At  
[www.cbur.com](http://www.cbur.com)



**CENTRE COUNTY - BELLEFONTE AREA**  
**27 ACRE DAIRY FARM**

Stone farm house, modern 1-story tie stall dairy barn, 20'x70' Star sealed silo. Ideal for limited acreage dairying.



**REVISED LISTING - NORTHUMBERLAND CO. -  
TURBOTVILLE AREA**

60 acres w/54 tillable, 4 woodland, 2 site & misc., old brick house, 1 story hi clearance barn, highly productive land, nice location. Additional 25 acres tillable available.

**CALL TOLL FREE FOR DETAILED BROCHURES**  
**ADDITIONAL FARMS, FARMETTES, VACANT LAND**  
**AND HUNTING LAND PARCELS AVAILABLE.**  
**FREE LISTS.**



**UNIVERSITY REALTY**  
126 E. Foster Ave., State College, PA 16801  
**800-669-4925 Toll Free**

### PENNA FARMS

#### CUMBERLAND COUNTY Lower Mifflin Township

114 acre farm, currently used as beef farm, approx. 87 acres are tillable, large bank barn, 47'x54' arch steel building, several other garages & outbuildings, large 4 bedroom house, a lot of creek frontage, property located right outside of Newville. Call Herb Weaver for details.

#### North Newton Township **REDUCED**

161 ac. former dairy farm, 52 stanchions in barn, dairy equipment (old), 10x50 silo, 20x70 silo, 4BR farmhouse, shale & limestone soil.

#### FRANKLIN COUNTY Metal Township

50 Ac. of land and you get the dairy equipment and all the buildings and also a property operating - NO DWELLING - well or pump. More info. call Charles - near Fannettsburg.

Farms - Land - Farm Appraisals - Give us a call!

Charles Weaver, GRI 717-263-0945  
Wipac, PA 717-488-8534

**GEORGE E. EBNER &  
ASSOCIATES REALTORS**  
P.O. Box 100, Carlisle, Pa.  
717-263-8195

### FINGER LAKE FARMS

- Working dairy, herringbone D5 parlor, 3,000 gal. tank, 130 free stalls, outstanding home, horse barn, 7-door equipment shop - **\$200,000.**

- Very new 54 stanchions, pipeline, 1250 gal. tank, barn for young stock, horse barn, 4BR home, private.

- Pleasure farm on 79 acres, dairy now w/young stock, horse barn, shop, 3BR home, overlooking pond, close to lakes, on Rt. 14A Dundee, NY - **\$113,000.**

- Fruit Farm, large, one of the best around, over 3,000 trees also farm market, elegant home, 6BR, 8 barns - a must to see! Geneva area, close to lake.

- Petting zoo, Ark in the Park, good business, most of the animals will stay, 6 pastures, 3 barns, ring and hay rides, home and trailer, fishing pond, close to 3 large cities. **\$300,000.**

Call Bernice Olsen after 6 p.m.

**(315) 536-3576**

**HUNTINGDON COUNTY - 176 Acre** general farm, 10 minutes from Turnpike, 76 acres cleared, balance wooded, 2-1/2 story home + 10-year-old mobile home. Excellent hunting, trout stream. Call Wes for details 814-944-1873.

**BEDFORD COUNTY - 185 Acre Dairy Farm,** New Berg operated tie stall barn, heifer barn, 2 concrete silos, large metal implement shed, other outbuildings, remodeled 2 1/2 story farm house, excellent soil, stream & pond. Cattle & equipment available. Call Wes 814-944-1873.

**BEDFORD COUNTY - 66 Acre** wooded parcel of land with 4 bedroom, 2 1/2 story home. Secluded setting, excellent hunting & fishing area. Ideal for year around use, camp or summer home. Call Wes 814-944-1873.

**RESTORED 100 YEAR OLD LOG HOME -** on a 20 acre parcel of land with small stream, 1000 square foot addition to house, large barn, dead end lane. Ideal for horses, etc., top condition. Call Wes 814-944-1873.

**CLEARFIELD COUNTY - 76 acre** general farm with remodeled 2 1/2 story home. Large metal building with overhead doors. Bank barn, nice country setting. Priced to sell. Call Wes 814-944-1873.

**CLEARFIELD COUNTY - 72 Acre** parcel of land in a secluded setting, 30+ acres cleared - balance wooded, gas royalty + free gas, road frontage, nice view. Call Wes 814-944-1873.

Call Wes Appleyard  
for more information at  
(814) 941-6627 Ext. 127

**Century 21 Action  
Associates, Inc.**

320 Frankstown Avenue  
Altoona, PA 16602

**Home (814) 944-1873**

Email: [wappleyard@aol.com](mailto:wappleyard@aol.com)

Mifflin Co.,  
McVeytown, PA  
Farmette 7 1/2 ac.  
3BR house, full  
bath, bank barn,  
2 car garage with  
summer kitchen

**\$129,000**

**717/899-7918**

### LAND FOR SALE

Hunters, fishermen, campers or anyone desiring to live in the country. I have 3 beautiful wooded lots for sale in the heart of scenic central Pennsylvania. Easy access - only 5 minutes on paved roads from Exit 28 of Interstate 80. Lot numbers 2 and 3 have a small brook trout stream running across the property and border on hundreds of acres of State Forest. They are perched and ready for your permanent residence, summer home, camp or camping trailer. Lot #1 - 3.71 acres. Lot #2 - 5.64 acres. Lot #3 - 7.26 acres

**570/546-7302**

**New Listing Potential 2 Family** Farm with 400 acres 150 tillable, 100 pasture, balance wooded (including a Sugar Bush) Main Barn has 78 stalls on the pipeline with a 1,000 gal bulk tank. There is also 40 stalls for heifers and young stock. There is also another 65 stanchion barn for heifers 40x80 machine shed and several other sheds and outbuildings. There is also 2 houses. The main Home is a huge Historic Stone Home Which unfortunately has some damage due to a recent fire. The second home is a nice 5 bedroom 2 full bath with some remodeling already

done. This 3 generation family farm is only available due to an untimely death. Asking Only **\$149,900.**

- **113 acres 80 tillable,** balance pasture, very nice 4 bedroom 1 1/2 bath home with attached 4 car garage, (garage needs some work)
- Nice 60 cow barn set up to milk 4 unit pipeline 700 gal bulk tank 2 silos one has a new unloader. Two mobile homes and several other sheds. Asking **\$94,900.**
- **300 acres 250 tillable all in hay.**
- 45 cow barn with large addition for heifers and calves. Large pole barn
- Good 3 bedroom 1 bath home
- 1,000 ft. of frontage on an excellent fishing river. Asking **\$119,900.**

**20 other Dairy, Beef, and Hobby Farms from \$67,500 to \$149,000**

RUSSEL J. FINLEY  
BROKER - OWNER

Finley Real Estate

24 Hour Phone # **315-393-6325**

Rural Properties, Farms  
Residential, Business  
207 Montgomery St.  
Ogdensburg, NY 13669



### DEMERE REALTY

199 N. Gardiner Rd.  
Little Falls, NY 13365

Phone & Fax (315) 823-0288

George Demeree, Broker



[www.demereerealty.com](http://www.demereerealty.com)

**#415 - NEW LISTING - LG. FREE STALL OPERATION FOR 300 COWS** - Up-dated double-six parlor - drive thru feeding, hospital & freshening area, lg. office, 3 yr. old 100 free stall heifer barn, calf barn, 3 lg. bunk silos, 23,000 gal. water storage - also creek, spring, well & pond - V.G. 5 B.R., 2 bath home - owner willing to provide feed for operation - **\$600,000.**

**#247 - NEW LISTING - Crop, beef or horse farm** has 370 acres w/300 tillable - 38x108 ft. one story barn, concrete feed bunks, lg. mach. shed & good 9 rm. home w/garage - lots of water on property - **\$295,000**

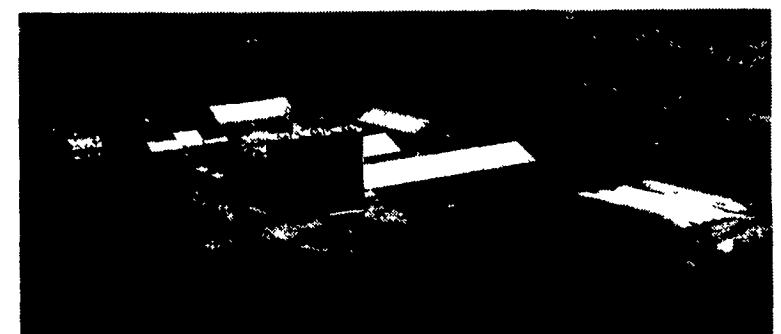
**#346 - PICTURE PERFECT 120 COW DRIVE-THRU FREE STALL OPERATION - 456 A.** with 358 tillable & 300 rented acres all adjacent to farm - double-six parlor w/automatic take-offs, 1500 gal. B.T., 2 lg. barns for young stock, dry cows & bred heifers, 5 silos w/unloaders & lg. trench silo w/concrete floor - also 2 BEAUTIFUL LG HOMES w/attached garages, paved drive-ways & in-ground pool - 3rd home avail - **\$1,250,000 negotiable.**

**#4 - A HOBBY FARM W/21 A.** - Beautiful 8 rm. Cape Cod home with attached 2 1/2 car garage - also 2 barns - nice pond & 2 wells - everything in A-1 condition in attractive country setting - **\$155,000. REDUCED TO \$149,000.**

**#62 - 350 A. dairy farm w/110 tillable - 2 story barn w/50 cows on 2" pipeline, 1000 gal. B.T., 10 dry cow stalls, 33 heifer stalls & 3 lg. silos w/unloaders - V.G. 3 B.R. ranch home - \$280,000 - cows & mach. avail. - PRICE REDUCED TO \$230,000 FOR 275 A.**

**#92 - 15 A. hobby farm w/lovely remodeled 10 rm. Federal style home in V.G. condition - features NEW KITCHEN, spacious country views, in-ground pool, lg. stocked pond & stall garage - \$98,000.**

### 536 ACRE DAIRY FARM



- World famous Holstein Breeding Farm
- Beautiful and Productive
- 52 cow world class show barn (Equipped for flushing international embryo sales)
- 3 complete milking set-ups
- Ultra modern feed facilities with Harvestore silos
- 4 sets of buildings in A-1 condition (4 Houses, 3 Apartments, 4 Bank Barns and numerous other buildings)
- Strategic Location (Lehigh County, PA)
- \$3.1 million

Call for a brochure and to arrange to see this fine facility. Farm is shown by appointment only.

**For additional information on this property and other fine PA farms and estates contact:**



new pennsylvania  
realty, inc.

Farms, Country Estates,  
and Historic Properties

**Perry Long at**  
**610-264-3025 or**  
**800-569-5167**

**227 Mush Dual Road, New Ringgold, PA 17960**