


Aluminum dump trailer, Parker 26' full, frame, 10.00 tires, excel. cond. .... \$8,000  
 Double drop deck trailer, 35 ton, new paint, new deck, excellent condition, great hay trailer for roll bales.....\$5,000  
 Rodgers 60 ton lo-boy, detach, drop side, like new condition, 21' well..... \$17,000  
 '72 Peterbilt C/O tractor, double sleeper, 400 hp CAT, 13 speed, Budd wheels, good condition.....\$6,500

(215) 822-6088



**92 FREIGHTLINER FL70**

5.9 Cummins Turbo Diesel, 5 Spd., A/C, Air Brakes, 33,000 GVW, 26' Morgan Van Body w/Liftgate, 35,000 Miles **\$18,900**  
 Call **717-336-3130**

1974 Mack single axle dump 10ft. bed, PA inspected, clean \$5,500 (610) 932-5576.

'85 R model Mack tractor, E6-350, 10 spd tandem. Call M-F 10am-5pm 410-288-1037

'89 Evans log trailer, new tires, new brakes, \$8500 n.e.g. 717-464-4212 12pm-9pm

1990 GMC 3500 crew cab, dually, 350 V8, auto., air, no rust, 64,000 miles, gray w/blue interior, bed liner, running boards, \$7750. 717/933-1600, 877/988-1600 toll free.

C6000 Chevrolet, w/22' box Duraleigh body; 1988 2500 3/4-ton pickup. 610/469-9633.

**'BICYCLE CARRIERS'**  
 SAVE \$\$  
 FREE UPS  
**1-800-WEAVER-D**  
**1-800-932-8373**

Lancaster Farming, Saturday, June 12, 1999-D37

**LEED TRUCK CENTER**  
 402 South Chiques Rd  
 Salunga Exit, Route 283  
**717-898-1200**




**89 IHC S1954**  
 DT 466 6 spd PS A/B A/C 30 200 GVW 22 C&C, 80 000 since overhaul insp, very clean  
**Priced To Sell**

**88 IHC S1954**  
 DT466 5&2 Spd PS A/B A/C 33 000 GVW 22 C&C Insp Clean  
**\$8,900**




**90 CHEVROLET ASTRO**  
 Mini Cargo Van, 6 Cyl., A/T, P/B, P/S A/C 5400 GVW, AM/FM Radio 149,573 Hwy Miles, Shelves Bulkhead & Ladder Rack 500 Insp  
**Only \$12,600**

**93-94 ISUZU NPR**  
 3.9 Liter Turbo, A/T P/S, 11,050 GVW 14 Van New Insp Very Clean  
**Starting At \$10,900**

**YARNALLS Equipment Co.**

4171 Horseshoe Pike (Rt. 322), Honey Brook, PA 19344

Call Today **610-273-9200** **Silver Star** Toll Free **(888) 900-7669** **SPACER**



Horse Trailers: Silver Star, All-Aluminum, Stock, Straight, Slant, Gooseneck Available



Phoenix Aluminum 2 Horse Thoroughbred Size w/Dressing Room

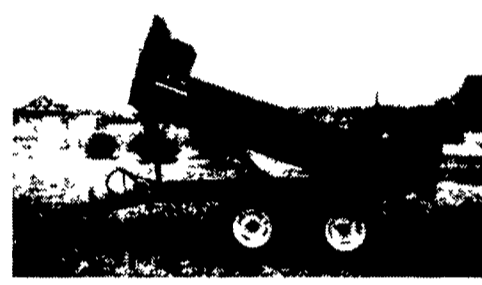


**Financing Trade Ins Repairs**  
 Hours: Mon., Wed., Thurs., & Fri. 8:30-5:00  
 Tues. 8:30-7:00 Sat. 9:00-1:00 Or By Appointment  
 8 Miles Off Exit 22 PA Turnpike

FINANCING TERMS AND CONDITIONS MAY VARY

**FARM DUMP TRAILERS**

(Direct from the Manufacturer)



- 6-Ton Dump Trailer**
- 10 ft. x 7 ft.
  - Floating Tandem Axle
  - 3 ft. Front, 3 ft. Tailgate & Grain Chute
  - 16 in. Extendable Sides
  - 10 ga. Floor & Sides
  - 11Lx15 Flotation Tires
  - 2-Way 4 in. x 24 in. Hydraulic Cylinder includes hoses

**7-Ton Road Dump Trailer**

- Fifth wheel or bumper type
- 16 ft. x 8 ft. deck 3 ft. front rack and pockets side & back
- D.C. hydraulic pump & battery mounted in locking tool box
- 12 ton drop leg jack
- 10 ga. floor
- 6x3x3/16 tube main frame
- Sealed beam lighting
- 7000 lbs. per axle rating
- Electric brakes on both axle
- 16" tires on white spoked rims
- \$6400 U.S. delivered in Northeast U.S.A.

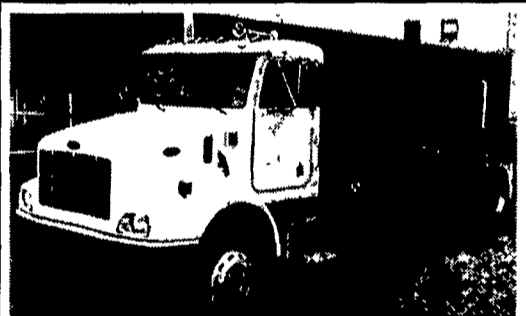


**BERKELMAN'S WELDING**

RR 7, AYLMEY, ONTARIO, CANADA N5H 2R6  
**(519) 765-4230**

**HUNTER KEYSTONE PETERBILT LP**

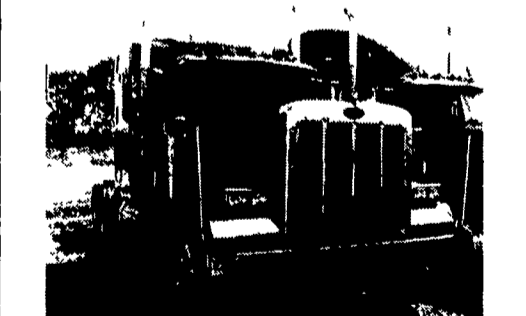
1467 Manheim Pike • Lancaster, PA 17604  
**717 299-6630 • 800 243-2458**



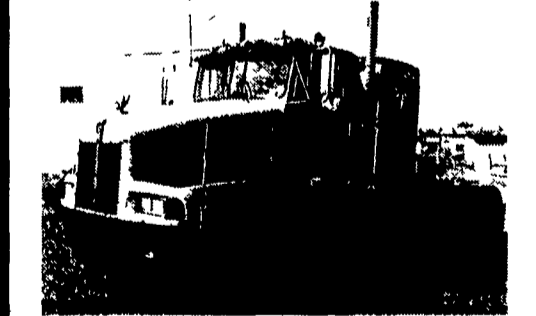
**NEW Peterbilt 330 Cab & Chassis**, Cat & Cummins Eng, 6 & 9 Speed, 26,000 to 33,000 GVW, Different Options, In Stock or On Order.



**NEW Peterbilt 330, 10' Dumps**, Cat & Cummins Power, 9 Spd, 33,000 GVW, Locking Rear, Air Ride 10:23 Axles



**1992 Peterbilt 379**, DTS60, 12.7L, 145 HP; Fuller 15 OD Trans, Air Ride Susps; 40,000# Rear Axle, Ratio 3:70



**1987 Kenworth T6000**, 40" Sleeper, NTC 400 Cummins, 9 OD Speed Trans., Jake Brake, 8 Bag Air Ride, 4:44 Ratio.



**1992 Volvo**, Cummins N14-430 HP, Jake Brake, 9 Speed, 220 Wheel Base, 60" Sleeper, 3:91 Ratio



**1985 Autocar**, Alu. Parker Heated 17 1/2 Ft. Dump, NTC 190 Cummins Eng., Jake Brake, Henderson Susps., 18,000# Front, 46,000# Rears, 346,000 Miles.

**ISUZU SPRING CLEARANCE**



**'94 INTERNATIONAL 4900**  
 25,500 GVW; DT466 & 5 Spd; Htd Mirrors; Moto RH Mirror; Dual Tanks; 24' Van With Liftgate



**(2) 1995 GMC W4** 14,250 GVW; Auto, Turbo Diesel; A/C, 16' FRP Vans w/Ramp - NICE TRUCKS -



**96 ISUZU NPR**  
 14,250 GVW; Diesel, Auto; A/C, 14' Van with L/G; Only 87,293 Miles; Call Keith



**99 ISUZU NPR's Lease** For As Little As \$365 00 Per Month On Our WalkAway Lease Program Call Keith For Details



**1990 MACK RW713**  
 350 Mack; 12 Spd. Mack Trans, 12+38 w/Neway Air Ride; Wetline; NICE TRUCK Call Keith



**(2) 1989 MACK MH613-E6**  
 350 Engine; 10 Spd Fuller, 12 FA, 38 RA, 11R22.5; Pol. Alum Fronts, White - NICE TRUCK -

Berks, Lebanon & Schuylkill Counties **ONLY AUTHORIZED** Isuzu Dealer

"Call for Details on our New Lease Programs"

**ISUZU TRUCK OF READING**  
**READING MACK DIST.**  
**800-485-2556**  
 4226 Pottsville Pike, Reading, PA