

# Commonwealth of Pennsylvania



## Governor's Office

### PROCLAMATION

#### JUNE DAIRY MONTH June 1999

WHEREAS, Pennsylvania's dairy industry is the leading agricultural industry in Pennsylvania, contributing 37 percent of all agricultural income and generating nearly \$1.53 billion in revenues to the economy of this Commonwealth; and

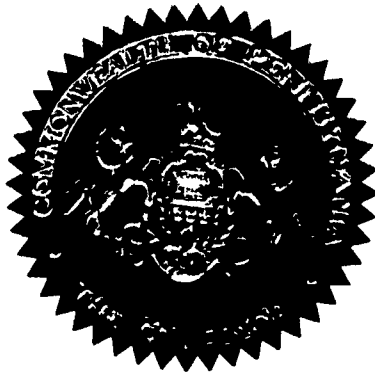
WHEREAS, our 10,200 dairy farm families with their 639,000 cows produce 10.74 billion pounds or seven percent of the nation's total supply of milk annually, ranking Pennsylvania fourth in the nation in milk production; and

WHEREAS, June Dairy Month offers an opportunity to recognize both farm families and the food processors who provide consumers with a wide variety of fresh wholesome dairy products which supply essential nutrients and are a vital part of a healthy diet; and

WHEREAS, Pennsylvania's General Assembly on April 29, 1992, designated milk as Pennsylvania's official beverage; and

WHEREAS, Pennsylvania is proud of its dairy industry and the important contribution it makes to our economy and the welfare of our citizens. We salute dairy farmers and their families for the strength and vitality they bring to rural communities throughout the Commonwealth, and their commitment to using the most modern technology for maximum efficiency.

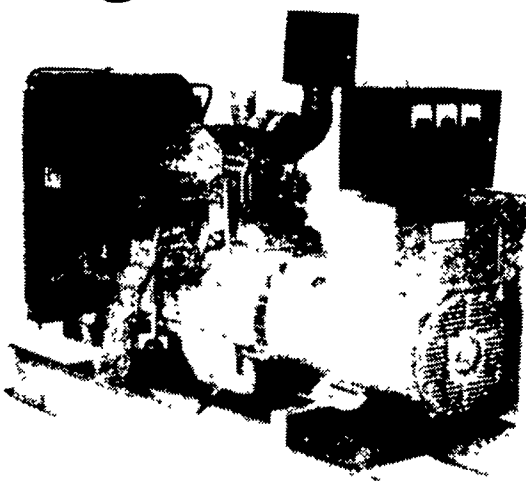
THEREFORE, In recognition of our thriving dairy industry, I, TOM RIDGE, Governor of the Commonwealth of Pennsylvania, do hereby proclaim June 1999 as DAIRY MONTH in Pennsylvania. I urge all citizens to enjoy the Commonwealth's official beverage and other dairy products while recognizing the industry's contributions to our economy and our health.



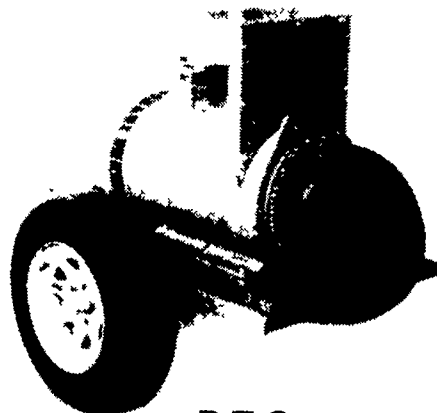
GIVEN under my hand and the Seal of the Governor, at the City of Harrisburg, this thirteenth day of May in the year of our Lord one thousand nine hundred and ninety-nine and of the Commonwealth the two hundred and twenty-third.

*Tom Ridge*  
TOM RIDGE  
Governor

## Agricultural Generators



Automatic  
L.P. Gas, Diesel, Natural  
Gas Generators  
5 to 2,000 KW



P.T.O.  
Generators  
25 to 135 KW Units  
In Stock!

Service - Rental - New - Used

# PENN POWER SYSTEMS

Power Generation Systems Specialists

330 Fonderwhite Road, Lebanon, PA 17042

Call Leonard Martin **717-273-4544**  
Fax 717-273-5186

## Gov. Ridge Proclaims June As Dairy Month

HARRISBURG (Dauphin Co.) — Gov. Tom Ridge has proclaimed June as dairy month in Pennsylvania to recognize the important role of dairy farmers and the dairy industry in keeping Pennsylvania's economy strong and its citizens fit and healthy.

Earlier this year, Gov. Ridge and his mother, Laura, appeared on billboards to salute the efforts of Pennsylvania's dairy farmers and the "got milk?" campaign sponsored by the Pennsylvania Dairy Promotion Program.

Pennsylvania is the fourth-leading milk producing state in the nation.

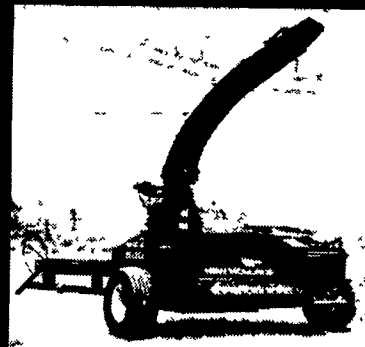
The commonwealth also is a national leader in the production of other dairy foods, ranking second in the annual production of ice cream and frozen dairy products, fourth in the production of butter, and sixth in the production of cheese.

"Last year, our 10,200 dairy farms produced more than 10.7 billion pounds of milk with on-farm sales valued at more than \$1.53 billion," Gov. Ridge said.

"Pennsylvania is proud of its dairy industry and the important contribution it makes to our economy and the welfare of our citizens."

### Now! Process Silage with your New Holland Harvester Increase Profits & Reduce Feed Waste

with the new  
Georgetown  
Kernel  
Processor  
Conversion  
Kit



New for 1999  
Kits for  
self propelled units!

- Adjustable 8 1/2" x 22" hardened steel rolls which turn at different speeds, more thoroughly breaking kernels.

- Remove floor pan to make haylage with the same unit.

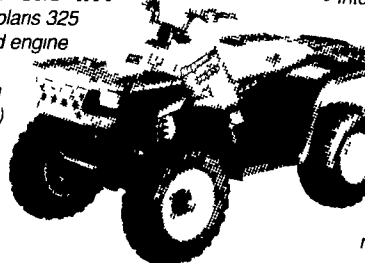
Georgetown Manufacturing Co.

343 Christiana Pike, Christiana, PA 17509 • 610/593-2753  
Call Today for More Information

## BUY 4WD. GET TRUE 4WD.

### New! MAGNUM 325 4X4

- New! Rugged Polaris 325 4-stroke, air cooled engine
- New! Exclusive Shaft Ride System
- Long travel (6 5/8") rear suspension
- Tight-turning MacPherson strut long-travel (6 7/8") front suspension



- Intelligent On-Demand true 4-wheel drive with on/off thumb switch
- Automatic transmission (PVT)
- Single-lever, all-wheel hydraulic disc brakes, hydraulic rear-axle foot brake

POLARIS®

RIDE THE BEST

J & H Cycle Accessories, Inc.  
717-653-5672

1090 W. Main St., Mount Joy, PA 17522

Polaris ATVs may not be ridden by anyone under 16 and all riders should take a safety course. For safety and training information, see your dealer or call Polaris at 1-800-342-1541. ATVs can be hazardous to operate. For your safety always wear a helmet, eye protection, protective clothing and never carry passengers. ©1999 Polaris Sales Inc.

## TRIMMER on WHEELS!

The Revolutionary DR® TRIMMER/MOWER™ rolls light as a feather on two BIG WHEELS!

- TRIMS far easier, better, more precisely than hand-held trimmers
- Plus, MOWS everything from whole lawns (even wet!) to tough waist-high grass and weeds with ease!
- Rocks, roots, stumps, etc., do it no harm because the "DR" has no steel blade to bend or dull.



- Perfect for ALL mowing and trimming around smaller properties, vacation homes, etc., and for finish-up mowing and trimming after riding mowers on larger parcels. A delight for anyone to use!

Toll FREE  
(800)491-5858

MADE IN USA

YES! Please rush FREE DETAILS of the Revolutionary DR TRIMMER/MOWER including prices and specifications for Manual and Electric Starting Models and Off Season Savings now in effect

Name \_\_\_\_\_  
Address \_\_\_\_\_  
City \_\_\_\_\_ State \_\_\_\_\_ Zip \_\_\_\_\_  
To COUNTRY HOME PRODUCTS  
Dept 4941T, Meigs Road, PO Box 25  
Vergennes, Vermont 05491



Why Do It The HARD WAY!  
So, WHY HASSLE with hand-held trimmers or small-wheels mowers? Please call TOLL FREE or mail coupon at right for FREE DETAILS of the Revolutionary DR® TRIMMER/MOWER™!

LF ©1999 CHP, INC.