

KEYSTONE TARPS

SERVICE & SALES

Is A Manufacturer Of Custom Tarps

- Systems
- Tarp Straps
- Storage Covers
- Load Straps
- Gloves
- Used Railroad Ties



1-800-798-TARP
(8277)



FAX 717-435-0036 717-435-0752



97 Isuzu NPR w/Omaha Utility Body,
AT/OD, A/C, 13,250 GVWR, 17k Mi.
717-354-3199

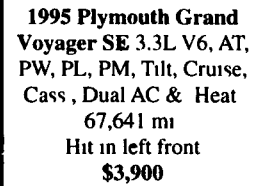
John E. Kreider

Specializing in Rebuildables

5348 Beagle Rd., Elizabethtown, PA 17022
717-361-9296



1995 Ford Windstar GL
3.8L V6, AT, PW, PL,
PM, Tilt, Cruise, Cass
Dual AC & Heat, 72,735
Mi. Hit Across Front
\$3,450



1995 Plymouth Grand Voyager SE 3.3L V6, AT, PW, PL, PM, Tilt, Cruise, Cass, Dual AC & Heat 67,641 mi Hit in left front **\$3,900**



1997 F-150 Supercab 4x4 XLT 3 Dr.
4.6L V8, AT, AC, Tilt, Cruise, Cass, PW, PL, PM. 8' Bed, 36,755 mi. Rolled **\$8,900**



1992 Olds Cutlass Ciera 3.3L V6, AT, AC, PL, Cruise, Tilt, Cass, 93,775 mi. Light hit to Right Front. Runs. Parts Available to Repair **\$1,500 w/parts**



WILLIAM H. WESSELS USED CARS



94 Chevy K3500 4x4, Silverado 454 V-8, Auto, AC, Red, 86,107 Miles
\$15,900



95 Chevy Tahoe LT, 4x4, Auto, AC, PS, PB, Black, 88,236 Miles
\$17,900



94 K2500 4x4, Silverado, Ex Cab 350 V-8, 5 Speed, AC, 98,785 Miles, Matching Cap GVW 8600
\$15,900



99 Dodge Ram 1500 Laramie SLT, 4x4, Quad Cab, 360 V8, Auto, AC, 31,207 Miles
\$24,900



95 Ford Bronco XLT, 5.0 V-8, Auto, AC, 1 Owner, 74,280 Miles
\$13,900



97 Dodge Ram 2500 Cargo Van, 5.2 V-8, Auto, AC, 16,240 Miles, w/Blance of Factory Warranty
\$13,900



97 Ford F150 Ex. Cab, XLT, 4x4, V-8, Auto, AC, 3rd Door, 40,256 Miles
\$20,900



67 Cadillac Convertible DeVille, Nice Older Car
\$7,990



96 GMC Suburban, 350 V-8, Auto, Rear AC & Heat, Leather, 3rd Seat, 65,012 Miles
\$24,900



94 Chevy 14' Cube Van, 350 V8, Auto, AC, 94,207 Miles
\$10,900



89 GMC Ex. Cab, 2WD, Auto, V8, AC, 96,207 Miles
\$6,990



89 Chevy K1500 Ext. Cab, Long Bed, 350 V-8, Auto, AC, 1 Owner, Nice, 98,210 Miles
\$10,900



94 Ford F150, 4x4, 6 cyl., manual, AC, 80,307 mi.
\$9,900



93 Ford F700 Dump, 5.9 Cummins Turbo Diesel, 5/2 Trans, 27,902 Miles, 28,000 GVW
\$18,900



93 Chevy Ex. Cab 4x4 Short Bed, 350 V-8, 57,000 Miles
\$15,900



97 Dodge Laramie XLT, Ex. Cab, 4x4, 5.2 V8, 71,206 Miles
\$18,900



93 Chevy Suburban K1500, 4x4, 350 V-8, Auto, AC, 3rd Seat, Only 78,502 Miles
\$16,900



89 Chevy C3500, Dual Wheels, 350 V-8, 5 Speed, 96,207 Miles
\$7,990



91 Chevy K3500, 4x4, Utility Truck, 350 V-8, 4 Speed, 73,207 Miles
\$12,900



94 Chevy 2500, 350 V-8, Auto, AC, 111,207 Miles
\$10,900



97 GMC SLE 4x4, Voltac 350, Auto, AC, PW&L, 55,207 Miles
\$17,900



95 Ford F150 XL, 4x4, Long Bed, Ex. Cab, 5.0 V8, Auto, PS, AC, 65,900 Miles
\$15,900



87 GMC Topkick 7000 Cab & Chassis, 3208 Cat Diesel, 33,000 GVW
\$8,990



91 Chevy Ex. Cab Pickup, 4x4, V8, Auto, AC, 116,502 Miles
\$8,990



97 Ford Expedition XLT, V-8, Auto, PS, PB, AC, PW & L, 63,827 Miles
\$20,900



97 Ford XLT 4x4, 4.6 V-8, 3rd Door, Auto, AC, Black, 70,306 Miles
\$18,900



97 Jeep Grand Cherokee Limited, V-8, Auto, AC, Leather, Every Option, 69,522 Miles
\$17,900



99 Chevy Suburban LT 4x4, 36,204 Miles
\$32,900



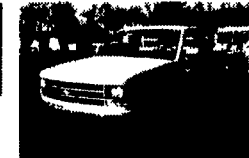
92 GMC Topkick Cab & Chassis, 366 Gas, 5-2 Speed, 26,000 GVW, 127,106 Miles, Very Nice
\$14,900



97 GMC K3500, Ex. Cab, 4x4, 350 V-8, Auto, AC, SLT Pkg, 36,107 Miles
\$23,990



92 Ford Bronco XLT, V-8, Auto, 107,206 Miles, Only Average
\$4,990



91 Chevy K2500 350 V-8, 4x4, Auto, 180,000 Miles
\$6,990



95 GMC Sonoma Ex. Cab, 4 Cyl., 5 Speed, PS, PB, 99,116 Miles
\$5,990

KELLER BROS.

(Buffalo Springs) Lebanon, PA

717-949-2000 or 1-800-363-2767

LEBANON COUNTY'S HEAVY DUTY TRUCK HQTRS.

1999 F250's, 350's, XL, XLT & Duallys 4x4 & Gas or Turbo Diesels

FORD FORD

1997 FORD EXPEDITION XLT
5.4 V8, Dual A/T, 3rd Seat, SAVE THOUSANDS



1994 FORD AEROSTAR XLT
Extended, 4x4, All Power Options, Low Mileage



1996 FORD E150 CONVERSION VAN

5.8L V8, Raised Roof, Dual, A/C, TV, VCP, Trifold Rear Seat, Like New, Only 17,000 Miles



1999 FORD F250 SUPERCAB 4x4
XLT, Short Box, 7.3 Turbo Diesel, Only 195 Miles



1999 FORD F250 CREW CAB
Short Box, 7.3 Power Stroke Diesel, 4x4, Lariat



1999 FORD F350 CREW CAB DUALY
4x4, XLT, 7.3 Turbo Diesel, Brand New 3-In-Stock



1999 FORD F350 CREW CAB DUALY
4x4, XLT, 7.3 Turbo Diesel, Brand New 3-In-Stock

\$37,000 Ea.

1999 FORD F350 REG. CAB 4x4
6-Speed, 7.3 Power Stroke Diesel, A/C



1995 FORD F150 XLT, 4X4
V8, AT, A/C, Matching Cap, Very Clean



1992 FORD AEROSTAR
7-Pass, Dark Blue, Local Trade



1999 FORD F250 SUPER CAB 4X4
XLT, Long Box, 7.3 Turbo Diesel, Only 100 Miles



1995 FORD E350 CLUB WAGON
12 Passenger, XLT, AT, Dual Air, PW, PL, Very Clean



1999 FORD F350 REG. CAB 4x4
V10, AT, A/C



1996 FORD F250 HEAVY DUTY 4X4
XLT, 351 V8, AT, A/C, PW, PL, Local 1-Owner Trade



1993 GMC S-15 JIMMY
4x4, 4-Dr., 4.3 Vortec V-6, AT, A/C, PW, PL, C, T, Cass.



1996 FORD F250 SUPER CAB, 4X4
AT, 460 Gas, XLT, Very Nice



1993 FORD BRONCO EDDIE BAUER
AT, V8, Leather, 4x4



1990 MERCURY GRAND MARQUIS
Leather, Light Blue, Looks Brand New, Just Traded



1995 FORD EXPLORER (EDDIE BOUER)
AT, A/C, 4X4 Leather, Moon Roof, CD Player, Like New



1997 CHEV K2500 EXT. CAB 4X4
5.7 Vortec V8, Silverado, 5-Spd., Loaded



KELLER BROS. FORD HAS SERVED CENTRAL PENNA. AREA FOR MORE THAN 78 YEARS.

FORD FORD FORD FORD FORD FORD FORD

WILLIAM H. WESSELS USED CARS

811 Route 15 Dillsburg, PA
1-800-440-4433 1-717-432-2918

Notary Public - Temporary Tags