

### Sandblasters - Air Compressors

#### Portable Air Compressors

Schramm 160 CFM Gas.....	\$500
Ingersoll Rand 125 CFM Gas..	\$800
Jaeger 125 CFM Gas.....	\$1,200
Joy 125 CFM Gas.....	\$1,500
Joy 185 CFM Gas.....	\$2,100
Leror 185 CFM Diesel.....	\$3,000
Joy 185 CFM J.D. Diesel.....	\$4,800

#### Sandblast Equipment

36x36 Blast Cabinet with Reclaim .....	\$950
(4) Small Blast Cabinets.....	Starting at \$250
600 Lb. Blast Pot with Hose and Nozzle.....	\$400
60x48 Pressure Blast Cabinet.....	\$2,500

NEW AND USED Sandblasters, Blast Cabinets, and Air Compressors

Many More Compressors & Blast Machines In Inventory - Trade-Ins Welcome

**Titan Abrasive Systems, Inc.**  
(570) 648-4774

### FILL-RITE PUMP SPECIAL

**Rotary 112C with Counter**  
**\$135.00**

**w/o Counter**  
**\$99.00**

**PUSH-PULL**  
**FR152**  
**\$99.00**

**AC UTILITY PUMP**  
**FR701**  
**\$415.00**

**FREE DELIVERY WITHIN OUR AREA**

**CERTIFIED PETROLEUM TECHNOLOGIES, INC.**

75 SOUTH 13th Aven.  
Lebanon, PA 17042  
**(717) 270-8910**

Distributor of Fillrite Pumps

Gehl 5625 skid loader, new paint, excel shape ... **\$8,500**

Bobcat 534 skid loader, diesel eng. backhoe attachment, very low hrs, excel cond ... **\$11,000**

Bantam gradall, model T725A, diesel up, gas down, good working order ... **\$3,000**

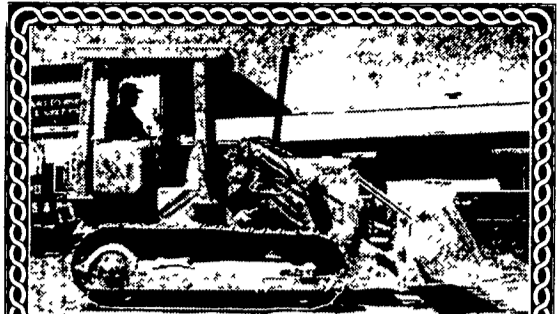
'68 Grove, 15 ton crane, good working condition... **\$7,500**

20' & 40' sea containers for storage, excel cond delivery available, starting at \$1,250

**301-695-5300**

1996 Cat .416B backhoe, 4WD, 2560 hrs. of operation 2-rear buckets, fully fitted for hoe ram, excel cond. \$40,000 OBO. 717-632-2151

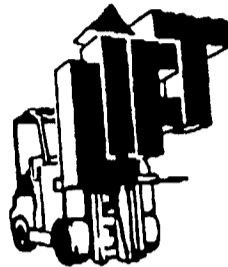
Bobcat 943 with 1000 hrs, plus new tires, 1994, diesel, \$12,000. Also, aux. hydraulics. Call 814-623-8109



**Cat 941/951 CRL Loader**  
**8 to Choose from starting at \$13,500 Sale Or Rent**

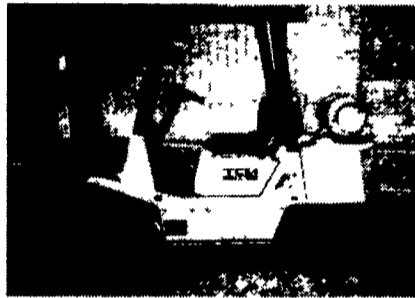
**Heavy Equipment Loader Parts, Inc.**

10070 Allentown Blvd, Grantville PA 17028  
**(717) 469-0039 (800) 446-0505**



# LIFT, INC.

**\*Specials of the Month\***



TCM 6000 lb. forklift, pneumatic tires, 13' lift, rebuilt engine.



Toyota 5000 lb. forklift cushion tires, 15' lift, 3 stage, LPG

Toyota - 5000 lb. pneumatic tires, 15' lift, LPG

Clark - 15,500 lb. pneumatic tires, 12' lift, diesel

Upright scissor lift, 20' lift, cushion tires, gasoline powered

**Call: Sandy Napoli or Neil Giampietro**  
**(717) 492-9750**

**"WE HAVE HUNDREDS OF USED FORKLIFTS AND SCISSORS LIFTS AVAILABLE FOR SALE OR RENT!"**



**JD 670 Motor Grader 12' Blade, Cab, Good Running Condition... \$18,000**



**1992 JD 755B Crawler Loader, UC Weak, \$27,000**



**J.D. 675B Skid Loader.....\$8,900**



**Ford 655A, Ext. Hoe, EROPS.....\$16,500**

**BACKHOES**

JD 310C, 4x4, EROPS. \$18,500

93 Ford 555D, ROPS, Low Hours..... \$20,000

Case 580B, Standard Hoe, ROPS .....\$7,200

JD 510B, Cab, Standard Hoe, Good Condition . . . \$14,500

**FORKLIFTS**

Zoom Boom 8040, New Machine, Rent or Buy . . . Call

MF 6000 Lb. Diesel . . \$11,000

Cat D3B Dozer, 6-Way Blade, 3800 Original Hrs . . . Priced to Sell

Marklift 30' Man Lift, 4x4, Good Condition . . . \$9,800

(2) GSI 20', Electric. . . \$2,800 Ea.

**Weaver's Equipment Sales**  
RD#1, Box 418, Milton, Pa. 17847  
Phone: 570-523-9598

831 S. College St. (P.O. Box 409)  
Myerstown, PA, 17067  
**RENTALS AVAILABLE**  
HOURS: Mon-Fri • 7:30-5:00  
Saturday • 7:30-Noon



**WENGERS OF MYERSTOWN**  
Construction Equipment & Parts

**717-866-2130**  
Fax (717) 866-4300  
Nights: (717) 272-9583  
<http://www.wengers.com>  
[wengers@ptd.net](mailto:wengers@ptd.net)

<b>CHRYSLER DOZERS</b>	
Komatsu D31A-17, 1985, 6-way.....	\$19,500
Komatsu D31A-17, 1986 R.O.P.S., 6 Way.....	\$21,500
JD 450E, 1986, 6-way.....	\$23,500
Case 550E LT, 1993, 6 Way.....	\$33,500
Cat D7F-1974, ROPS ST/Tilt.....	\$35,000
Komatsu D31E-20 6-Way.....	\$37,500
Cat D4H 1988 6 Way.....	\$42,500
Cat D5C LGP, Cab 1993.....	\$46,500
Cat D6D, 1985 EROPS ST. w/Tilt.....	\$48,500
<b>CRAWLER LOADERS</b>	
Allis Chalmer D7G R.O.P.S.....	\$6,500
Cat 963 LGP ROPS.....	\$47,500
<b>BACKHOES</b>	
JD 510B, 1985, Cab, Standard.....	\$15,900
JD 510B, 1985, Ext. Hoe.....	\$15,900
Case 580SE, 1984, ROPS, Ext-Hoe.....	\$16,300
Case 580K 1987 Cab, Clean.....	\$18,500
Case 580K 1988 Cab, Clean.....	\$19,500
JD 210C 4x4, Cab, 4 in 1.....	\$21,500
Case 580K 1987 4x4 Ext. Hoe Cab.....	\$26,500
Case 580K 4x4 St. D. Stick 1988.....	\$26,500
Case 680L, 1990, 4x4, cab.....	\$28,500
JD 710C, 1989, cab, standard.....	\$32,500
<b>RUBBER TIED LOADERS</b>	
Ford A64, cab.....	\$15,900
Cat 926, 1985, Cab.....	\$36,500
Cat IT18, 1985, cab.....	\$46,500
Cat IT 14B, 1993, cab, low Hrs.....	\$53,500
Cat 980F 1995, cab, scales.....	\$195,000

<b>FORKLIFTS</b>	
(2) Hyster S100XL-2 1995 5-Ton, LP Gas.....	\$13,000 ea.
(2) Hyster S50XL-2 1995, LP Gas, 5,000 Lb.....	\$11,000 ea.
JLG 60H Manlift, 1985, diesel.....	\$21,500
Gehl 663, 1989, shooting boom.....	\$33,500
<b>TRACTORS LOADERS</b>	
Case 580SE Cab, Clean.....	\$12,500
Ford 445C 4x4, 3pt, PTO, Soft Cab.....	\$21,500
Case 570LXT 4x4, Cab, 3pt.....	\$27,500
<b>SKID LOADERS</b>	
N.H. L553.....	\$7,900
JD 675B, 1988, diesel.....	\$8,500
JD 675B, 1993.....	\$9,500
New Holland LX665, 1994.....	\$14,500
New Holland 783, 1989 w/Backhoe.....	\$15,900
JD 8875, 1996.....	\$16,900
<b>EXCAVATORS</b>	
Kubota KX101 w/Blade.....	\$22,500
Cat E70B, 1989, 3500 hours.....	\$26,500
Hitachi EX100, 1990, 3400 hours.....	\$31,500
Cat 307, 1994, 2600 hours.....	\$32,500
Hitachi EX120-2 1991.....	\$36,500
Komatsu PC-120-6 1993, 2600 Hrs.....	\$45,000
1996 Komatsu PC-120-6E.....	\$57,500
1996 Komatsu PC-120-6E.....	\$59,500
Cat 320L, 1993, 3800 Hrs.....	\$72,500
Cat 320L, 1994, 2200 Hrs.....	\$79,500
Cat 320BL, 1996, 3600 Hrs.....	\$95,000

<b>GRADERS</b>	
Dresser A450E, 1988, Cab & Ripper.....	\$34,500
<b>ROLLERS</b>	
Gallon 4-6 Ton, 1960, tow package.....	\$2,000
Bowmag BW100AD, 1987.....	\$7,500
Ingersol Rand DD24, 1991.....	\$18,000
Tampo RP28D, 1983?, 84" pad foot, DD.....	\$18,500
(2) Rex SP600, 66" Smooth, 1980-82.....	\$20,000 ea
Dynapac CA 15D, 1973, 66" Smooth, DD.....	\$21,500
Dynapac CA 15D, 1976, 66" pad foot.....	\$21,500
Dynapac CA 15D, '84, 66" smooth, DD.....	\$24,500
I.R. SP48 66" DD.....	\$26,500
I.R. DD90, 1990, 66" Smooth DD.....	\$26,500
Dynapac CA25 II, 1984, 84" Drum Drive.....	\$26,500
Case 602B, 69", D.D.....	\$27,500
Ingersol Rand SD100D-84" Smooth-1989.....	\$34,500
<b>TRAILERS</b>	
1999 4 Ton Tag-a-long, 6.5x14.....	\$1,700
1999 4 Ton Tag-a-long, 6.5x16.....	\$2,300
1999 4 Ton Tag-a-long, 6.5x18.....	\$2,400
1999 4 1/2 Ton Tag-a-long, 8x19.....	\$3,750
<b>MISCELLANEOUS</b>	
Clark American 2000 Sweeper, lpg.....	\$4,000
Puckett Bros T650B, 1988, paver.....	\$10,500
Gravelly 1210B Pro Chipper DSL, 200 hrs.....	\$18,500