

QUALITY MACHINES FROM BINKLEY & HURST BROS. INC.

Finance Plans Tailored To Your Needs. Make Your Purchase Now!

USED MACK FORAGE

- 1) VERMEER Trailer Type Round Bale Wrapper Model SW25-T
- 2) UM 4158 - ECON-O-WRAP Bale Wrapper.
- 3) UM 4143 - JOHN DEERE Model 925 Disc Mower Conditioner, 9'10" Cut, Like New - \$13,900 OBO.
- 4) UM 4122 - GEHL 9 Foot Pull Type Mower Conditioner, Model MC 2170 with Hyd Hitch Tongue Swing, Good Crusher Rolls - \$2,950.
- 5) JOHN DEERE 716 Forage Box
- 6) UM 4138 - JOHN DEERE 716 A Forage Box.
- 7) UM 4131 - NEW HOLLAND 892 Forage Harvester
- 8) UM 4095 - NEW HOLLAND Model 499, 12 Foot, Center Pivot, Haybine, Nice - \$4,850.
- 9) NEW HOLLAND - 415 Pull Type Disc Mower Cond., 11'4" Cut, Good Conditioning Rolls, Good Cond., 1994 Model - Only \$8,950.
- 10) UM 3923 - GEHL 2-Row Narrow Corn Head, TR3038 - \$1,950.
- 11) UM 3970 - JOHN DEERE 820 - 9 Foot Pull Type Mower Conditioner with Stub Guards, Mowed 400 Acres, Like New
- 12) UM 3700 - GEHL High Capacity 1000 RPM Model 1580 Blower.
- 13) UM 4033 - GEHL CB 1260 Forage Harvester With Auto-Max and Electric Controls.
- 14) UM 4112 - BALZER Model 1016 Conveyor Feeder Box with 3/4" Poly Flooring, Left or Right Discharge, Like New - \$9,250.
- 15) UM 4004 - NEW HOLLAND Model 575 Square Baler Ask for Landis
- 16) UM 4009 - 36 ft. SPEED KING Elevator in Good Condition For Bales or Corn - \$1,575 OBO.
- 17) UM 3964 - RICHARDTON Model 700 Dump Wagon with 120" Wheel Base, 1990 Model - \$6,995.
- 18) UM 4130 - RICHARDTON Model 700 Dump Wagon, 120" Wheel Base for Stability when Traveling Hillsides Very Good Cond. - \$8,900.

PRE-OWNED TRACTORS \$55!

- 1) UM 4162 - EARTHMASTER 3 Pt Ripper.
- 2) UM 4163 - ANDERSON Rock Picker Upper
- 3) UM 4155 - IH Model 37 Transport, 7 Foot Disk Harrow - \$850.
- 4) UM 4153 - SUNFLOWER Model 1232 21 Foot Narrow Transport Rock Flex Disk Harrow
- 5) UM 4152 - GANDY 10 Foot Drop Spreader
- 6) UM 4116 - JOHN DEERE 550 Mulch Master, 13 Foot.
- 7) UM 4133 - RHINO ATHENS Model 76 Rock Flex Double Offset Disk Harrow, 12 Foot.
- 8) UM 4134 - 7 Shank GLENCOE Coulters Chisel
- 9) UM 4119 - IH 4500 13 Foot Vibrashank with 3 Row Coil Tine and Packer Hitch, Good Cond., Mounted Type - \$1,500 OBO.
- 10) UM 4069 - IH 3 Pt. Field Cultivator, 12'6" Working Width Model 4500 Vibrashanks - \$1,150.
- 11) UM 3891 - 10% OFF KRAUSE Model 2400 Rock Flex Wing Disk Harrow, 26 Foot Cut with Dual Wheels Center Section, Front Blades Measure Approx 21" Diameter on 9" Spacing and Rear Blades Have 20" Diameter on 10-1/2" Spacing Good Frame - \$6,500 - Price Reduced!
- 12) UM 3915 - 10% OFF WILRICH 3 Pt Mounted Ripper with 3 Shanks, Spring Loaded Coulters and Depth Gauge Wheels Was \$2,350 - NOW \$2,115.
- 13) NE 5499 - Deep Till 30" Spacing Sub Soil Automatic Reset with Coulters UNVERFERTH Zone Builder 4 Shank - Special \$5,900 - New Demonstrator.
- 14) Chain Link Drag Type Harrows, 8' and 12' Models
- 15) GLENCOE Field Cultivator Pull Type Hyd Fold Wing Model and Hyd Depth Control, 4 Transport Wheels, Good Shovels with Rolling Leveling Baskets, 26' Working Width
- 16) UM 3993 - GLENCOE Pull Type Coulters Chisel, 11 Shank with Coulters and 4" Curved Shovels - \$4,250.
- 17) UM 3962 - KRAUSE Model 4900 25 Foot Cut Rock Flex Disk Harrow, Good Condition (Super Deal)
- 18) UM 4070 - SUNFLOWER 4301-5, Sunflower 5 Shank Auto Reset Ripper, Very Good Cond - \$5,600.

CHECK OUR SELECTION OF QUALITY USED TRACTORS

- 1) UT 4226 - IH 1086 Cab & Air, 130-140 HP, Nice - \$14,800
- 2) UT 4270 - MASSEY FERGUSON 31 HP 4x4 Diesel Tractor
- 3) UT 4220 - IH 656 Diesel Hydro Wide Front
- 4) UT 4255 - JOHN DEERE 6400 2WD, ROPS with 18 4x38 Radial Tires, 6 Front Weights
- 5) UT 4265 - JOHN DEERE 4040 4 Post ROPS
- 6) UT 4272 - JOHN DEERE 5210 Cab 4x4, 45 HP with Loader
- 7) UT 4262 - ALLIS CHALMERS 7580 Articulated 4-Wheel Drive w/Cab & Duals
- 8) UT 4266 - IH IH 686 Diesel Tractor
- 9) UT 4259 - CASE 970, Rated Approx 93 HP with 4 Post ROPS, Very Good Tight Tractor.
- 10) MASSEY FERGUSON 3545, Cab, 4 Wheel Drive, Ask Rick For Details.
- 11) UT 4178 - CASE IH Magnum 7120 4x4 Cab with 18 Speed P Shift, 155 HP, Very Late 1991, 4 Reverse Trans, 2,450 Hrs, 540 and 1000 PTO Shafts, Triple Hyd Outlets, Weight Frame & Weights
- 12) UT 4100 - IH 656 Diesel Hydro with 3 Pt Hitch One Owner Hydro and Engine Work Done in Last 3 Years Ask For Rick.
- 13) UT 4204 - M.F. 285 Diesel Tractor with Loader, Rated at 81 HP, Rear Wheel Weights - \$12,900.
- 14) UT 4192 - CASE IH 1594, 85 HP, 2 WD Cab & Air with Case IH Model 74L Loader, 3150 Original One Owner Hours Ask For Landis.
- 15) CASE IH 2166 4 Wheel Drive Combine, 1 Owner, 1996 Model Loaded

MISCELLANEOUS MACHINERY TRACTORS, MANURE SPREADER & MISCELLANEOUS MACHINES & ATTACHMENTS

- 1) UM 4140 - NEW IDEA 1500 Gallon Vacuum Tanker
- 2) 20 8x38 Axle Mount Duals, Complete with Tires, Original of Case 1370 Tractor
- 3) CASE IH Model 1360 Grinder Mixer, Ground Approx. 500 Mixes, with Scales, Mechanical Drive with Hyd Swing, Unloading Auger, 1000 RPM, Big Floater Tires
- 4) UM 4046 - WOODS Quick Attach Loader, Like New to Fit Case IH 5120 Maxxum Tractor, Model 215 with Joy Stick Single Lever Control with 7' Bucket - \$3,800.
- 5) Set of 6-Bolt Solid Rubber Tire & Rim Assemblies to Fit Case Unloaders Ask For Allen In Parts - \$1,360.
- 6) NE 4493 - SHURCO Truck Tarp System for 18' Truck Body Was \$2,300 - NOW \$1,950 Plus Installation
- 7) NE 4403 - 60" ATI Material Bucket for Gehl SL 3825 Skid Loader Discounted Price \$499.
- 8) UM 4086 - CASE IH 520 Quick Attach Heavy Duty Loader with 8 Foot Quick Attach Bucket, Single Lever Joy Stick Controls, will Fit 5130-40 and 5230-5240 and 5250 Case IH Maxxum Tractors - \$3,900 Plus Mounting.

SEE OUR GOOD SELECTION OF PRE-OWNED PLANTERS & SEEDERS ASK ABOUT GOOD FINANCING PLANS!

- 1) UM 4161 - IH 800 4 Row Planter
- 2) UM 3942 - 1997 Model KINZE 2600 12-Row, Swing Frame for Narrow Transport with Liquid Fertilizer Priced To Sell!
- 3) UM 4012 - JOHN DEERE 7000 Planter, 6-Row with Liquid Fert., with Monitor & Insecticide.
- 4) UM 4000 - IH 800 6-Row Dry Fert., 540 PTO, Super Deal - Best Offer.
- 5) UM 3708 - IH 800 6-Row Narrow with Liquid Fert., 1000 PTO, Monitor - \$3,750 OBO. Let's Get Together!
- 6) UM 3913 - KINZE - 6 Row x 30 Model 2000 Planter
- 7) UM 3645 - JOHN DEERE 4 Row, 30" Spacing Model 7000 Conservation Planter with Monitor, Double Disc Openers, Dry Fert., Insecticide, Reconditioned \$6,200.
- 8) UM 3694 - JOHN DEERE 7000 4-Row Planter with Liquid Fert., Loaded with Lots of Nice Add-Ons - \$6,950
- 9) UM 3721 - PULL TYPE Monosem 6-Row NGT Planter with Double Disc Openers and Dry Fert., Vertical & Cross Fill Augers
- 10) UM 3996 - KINZE Built New Idea 4-Row Planter Loaded with Good Options - \$6,500
- 11) UM 3687 - JOHN DEERE 4 Row x 30 7000 Planter w/Liquid Fertilizer Reconditioned \$4900.
- 12) UM 3962 - JOHN DEERE 7000 4-Row Conservation Planter with Liquid Fertilizer.
- 13) UM 4075 - JOHN DEERE 7000 6-Row 30 No-Till with Liquid Fert
- 14) UM 4048 - 18 PLANET JR. Seeder Units on 3 Pt Carrier
- 15) UM 3600 - JOHN DEERE 7000 Planter 6-Row, 30" with Liquid Fertilizer & Squeeze Pump and Markers, Reconditioned Price Was \$8,900 - Ask Merv for Discounted Price!

Ask About Our Good Financing Plans with Quick Approvals Tailored To Your Need!

Need a Tractor Quick? Purchase This Super Clean Magnum Case IH 7120 MFD From Binkley & Hurst Bros. Inc.



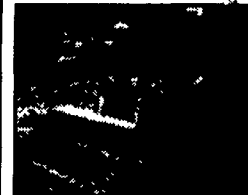
Reduced Price

Rated 150 to 170 HP, Late Model 4 Reverse Speed Trans., 18 Speed Straight through Power Shift, 540-1000 Shaft PTO, 3 Sets of Hyd. Outlets, 20.8x38/16 9x28 7 Front Weights. Super Price for The Quality of This Tractor and Ask About Competitive Finance Rates.



Just Traded - Case IH, 162 HP Model 3394 4x4 Cab & Air 504 Diesel, 12 Speed Trans. with 6 On-the-Go Power Shifts

CHOOSE A PRE-OWNED 5000 LOADER FROM BINKLEY & HURST BROS. TODAY



With Reconditioning Including Driveline Adjustments, Means You Get More For Your \$\$! Ask About Driveline Guarantees by Binkley & Hurst To Assure You Of Quality Reconditioning.

- 1) UT 4200 - CASE 85XT, 66 HP Skid Loader, 25 GPM Aux Hyd., Long Wheel Base, 44 37", 10 Foot Lift Height to Bucket Pin, Tipping Load Lift Capacity 4740 Lbs., Additional Weight Increases Lift to 5660 Lbs., Travel Speed 8.4 MPH, 82" Low Back Utility Bucket, Approx 150 Hours
- 2) UT 4242 - GEHL 4615 Diesel, 44 HP, 1987 with 3467 Hours, Aux Hyd., Self-Leveling Loader, Backhoe Hyd - \$8,250
- 3) UT 4237 - CASE 1840, only 1,500 Hours with Bobcat Style Foot Loader Controls and Hand Steering, 50 HP Case Cummins Powered - \$11,900
- 4) UT 4154 - CASE 1840 50 HP Cummins Powered, Aux Hyd., 2,548 Hours, Self-Leveling Loader, Deluxe Seat, 63" Dirt Bucket, Lights - \$12,500.
- 5) UT 4148 - CASE 1845C Case Cummins Powered with 73" Snow 7 Liter Bucket, 12 00x16 5 Tires - \$9,900.
- 6) UT 4113 - CASE 1845C 1991 Model, 73" Utility Bucket, Aux Hyd., Good Rubber, 12 00x16 5
- 7) UT 4114 - CASE 1845C 56 HP Cummins, 73" Bucket
- 8) UT 4102 - CASE 1845C, 56 HP Cummins with Aux., Hyd., 73" Utility Bucket with Bolt on Edge, One Owner - \$11,500.
- 9) UT 4053 - GEHL 5620 Perkins Powered 52 HP Diesel with Good Bucket & Tires
- 10) UT 3952 - CASE 1840 (1990 Model), 72" Dirt Bucket - \$12,900.
- 11) UT 4205 - CASE 1845 C 1994 Model with 80" Bucket, Aux Hyd., Deluxe Seat
- 12) UT 4217 - CASE 1845C 1989 Model with 56 Approx HP, 4 New Tires, Completely Serviced Drive Line with Guarantee, 73" Utility Bucket - \$11,250.
- 13) UT 4156 - CASE Propane Powered 1835C Unloader Approx 42 HP with 66" Utility Bucket and New 10 00x16 5 Tires, Counterweights & Lights - \$6,500.
- 14) UT 4225 - CASE 1845 Unloader with 90% 12 00x16 5 Tires, Good 72" Bucket - \$6,800.
- 15) UT 4229 - CASE 1840 50 HP Case Cummins Diesel, 1416 Hours, 63" Bucket, Aux Hyd - \$12,900.
- 16) NE 6436 - GEHL 6635 SXT, Low Hours 80HP, 2 Speed Drive, Universal Bucket, Quick Attach
- 17) UM 4128 - Heavy Duty Pallet Fork, 36" Long Tines for Case 1845 or 1845B, 650
- 18) UM 4284 - CASE 1845C Unloader, Only 1420 Hours, 1995 Model Aux Hyd., Rear Weights, Lights, Block Heater - \$15,250.

Massey Ferguson 81 HP Loader Tractor Model 285 Diesel



UT 4204 Rear Wheel Weights, Loader with 90" Wide Bucket \$12,000 OBO

One Owner 1996 Model 2166 4-Wheel Drive Combine (AFS) Only 607 Separator Hours



With Specialty Rotor, Field Tracker, Hopper Topper Extension, Updated Yield and Moisture Monitor, Removable Straw Chopper

Used Mack U Model



237 5 Speed Mack with 9' Dump, Air Brake Hookup and Pintle Hookup SPECIAL \$4,900

Case 1070 Cab, 110 HP



Ask For Don Hoover

BINKLEY & HURST BROS., INC.

133 Rothsville Station Rd.
P.O. Box 0395, Lititz, PA 17543-0395
Located 1/2 Mile North of Rothsville

(717) 626-4705

www.binkleyhurst.com

1-800-414-4705
Fax 717-626-0996