

**Soil Aerator  
Weed Killer!**

**Yetter**  
Defining Solutions

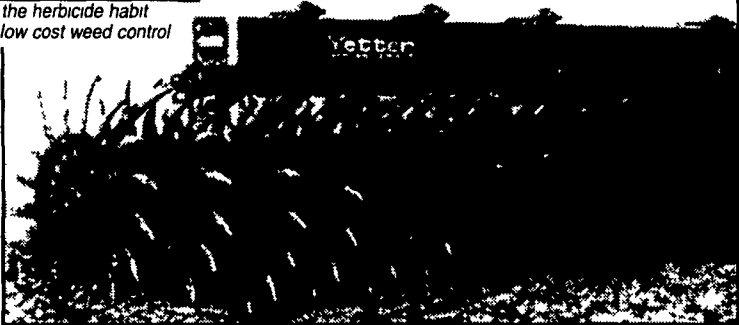
- Yetter Rotary Hoe**
- Aggressively uproots weeds
  - Incorporates herbicide
  - Aerates soil before planting
  - Follows soil contour
  - Staggered arms allow residue flow

• When you pour the herbicide from the can—it's gone, with no real guarantee of effectiveness against weeds today or in the future. Yetter Rotary Hoes allow you to keep ripping out weeds year after year with the same iron. • Along with killing those yield-robbing weeds, you benefit by busting yield-limiting crusted soils. Isn't it time you kicked the can and got the Hoe? Yetter Rotary Hoes, a guaranteed approach to environmentally-friendly weed control with the added benefits of time-saving speed and accuracy - year after year

**WEED KILLER**



Kick the herbicide habit with low cost weed control



See us today for your equipment and service solutions!

**BINKLEY-HURST  
BROS. INC.**

133 Rothsville Station Rd.  
P.O. Box 0395  
Lititz, PA 17543-0395  
(717) 626-4705 1-800-414-4705

Fax 717-626-0996

www.binkleyhurst.com



**Binkley & Hurst Bros. Stocks  
High Quality Rhino Machinery**

- Three-Point Hitch Backhoes
- Ditchbank Mowers
- Rotary Cutters
- Rear Blades
- Flail Mowers
- Three-Point Hitch Boom Mowers
- Finishing Mowers
- Pasture Renovators
- Post Hole Diggers
- Rotary Shredders
- Rotary Mowers
- Landscape Rakes
- Rotary Tillers
- Flex Wing Cutters



**3500**  
Super Heavy-Duty Blade for Large Tractors!  
12' or 14' Moldboard; Rated for 300 and 250 HP Tractors Respectively; Hydraulic Mainframe Swing, Moldboard Pivot, and Moldboard Tilt; 50" Max. Offset; 5" Kingpin; CAT III-IV Three-Point Hitch and Quick Coupler; 1/2" x 20" Moldboard; 1/2" x 6" Replaceable Cutting Edge; 3463-3603 Lbs (Approx.); End Plates; Skid Shoes; Dual Gauge Wheels Optional.

Available at Binkley & Hurst Bros. Inc. at a tremendous spring discount price - Don't Miss It!

In Stock - 9' Width, 125 HP Rating

In Stock - 10' Width Up To 190 HP Rating



**950**

A Very Durable and Versatile Blade!

7' or 8' Moldboards Rated for 125 PTO HP Maximum; 9' Moldboard Rated for 95 PTO HP Maximum, Hydraulic or Manual Mainframe Swing, Moldboard Pivot, and Moldboard Tilt; 30" Maximum Offset; 3" Kingpin; CAT I, II Three-Point Hitch and Quick Coupler; 3/8" x 17" Moldboard, 1/2" x 6" Replaceable Cutting Edge, 817-983 Lbs., End Plates, Skid Shoes, Gauge Wheel Optional.



**1540**

A Heavy-Duty Blade for Heavy-Duty Work!

8' or 10' Moldboard Rated for 190 and 160 PTO HP Tractors, Respectively; Hydraulic or Manual mainframe Swing, Moldboard Pivot, and Moldboard Tilt; 37" Maximum Offset, 4" Kingpin, CAT II, III Three-Point Hitch and Quick Coupler, 1/2" x 18" Moldboard; 1/2" x 6" Replaceable Cutting Edge, 1447-1618 Lbs; End Plates, Skid Shoes, Gauge Wheel Optional.

The Servis® 1348, 1548, and 1948 hydraulic boom flail cutters are designed for mowing grass and cutting brush in hard-to-reach areas including roadsides, ditchbanks, ponds, and fence rows. Large model with up to 18'8" horizontal reach and up to 4" diameter brush cutting.



**1348  
1548  
1948**



**NOTE:  
SEE BINKLEY & HURST BROS. INC.  
FOR ALL YOUR TRUCK BODY NEEDS**

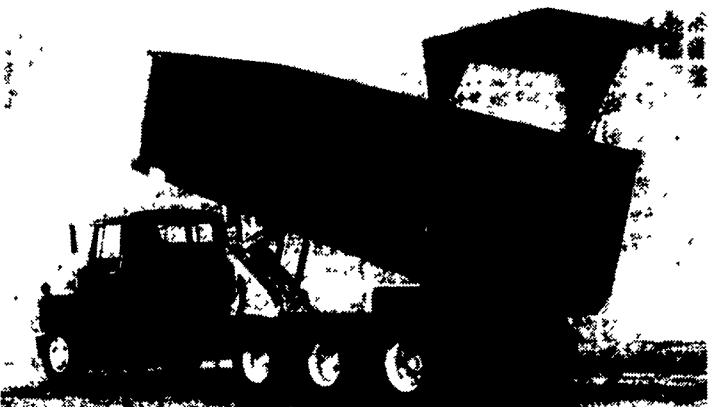
**Tapered Side Easy Slide  
Ensilage Bodies**

**Grain Bodies with Hay Hauler  
Features and Fold Down End Gate**

**Scott**

Bodies by Binkley & Hurst  
Ideal For Hauling:

- Waste Building Materials
- Mulch
- Bulk Fruit & Vegetables
- Sawdust
- Ensilage
- Bulk Trash
- Woodchips
- Grain
- Firewood
- Peat
- And Many Other Products



Hi-Lift Hydraulic End Gate Controlled From Inside of Cab. Center Mounted Grain Trap.

- Truck Bodies Mounted
- Hydraulic Systems Installed and Serviced
- Truck Work Done
- Custom Fabrication and Welding
- Axle Moved

**BINKLEY-HURST  
BROS. INC.**

133 Rothsville Station Rd.  
P.O. Box 0395  
Lititz, PA 17543-0395  
(717) 626-4705 1-800-414-4705

Fax 717-626-0996

www.binkleyhurst.com



**Heavy-Duty Features!**

15" Cut, 540 or 1000 RPM, Cat 5 Main Driveline, Cat 4 or 5 Wing Drivelines; Pan Blade Carriers, 6' Blade Overlap; Mechanical Level-Lift Axle; 10-Gauge Deck, 1/4"x10-1/2" Side Skirts; Full Swivel Clevis Hitch; Replaceable Skid Shoes; Wing Operation 90° Up and 22° Down; Rated for 2" Diameter Material Fully-Shielded Drivelines; Safety Deflectors Standard. 15 Foot and 20 Foot Models In Stock.



**SE15**

Rhino Batwing Cutter With 180 HP Gear Boxes

**3 Pt. Tillers  
In Stock**

Model SM7D  
70" Tilling Width



Good For Fall Lawn Seeding!  
Setting Standards For Performance and Durability!



**SE8  
In Stock**

The Rhino® SE8 is an economical rotary mower designed to help maintain larger acreages of grass, weeds, stalks, or material up to 1" in diameter.

The streamlined, close-coupled design allows economical operation on tractors as small as 30 horsepower on the SE8 and 45 horsepower on the SE10. The 85 HP center gearbox and 60 HP outboard gearboxes are protected from sudden shockloads by a slip clutch on the main driveline and torque dampeners on the side drivelines. Pan blade carriers help the unit glide over field obstacles and updraft blades with a 4" blade overlap provide a clean cut

**900-BLADE  
(2WD, 125 PTO HP Tractors Max.)**



End Plates are Optional Equipment

**8 Foot  
IN STOCK**

The 900 blade is available in widths of 7', 8', and 9' and features a heavy-duty CAT I-II three-point hitch and CAT 11 quick-hitch. The 9' model is rated for up to 95 PTO HP wheel-type tractors. Mainframe swing, moldboard angle, and moldboard tilt adjustments are easily made by relocating the index pins manually. Maximum offset from the center line of the tractor is 30" for working outside dual wheels. The 900 blade features a 3" diameter solid steel kingpin and a reinforced 3/8" x 17" moldboard to withstand the horsepower of larger tractors. The circular moldboard carrier plate allows adjustments throughout the full 360 degrees of moldboard angle to help accomplish numerous jobs easily. The quick-tach end plates are a helpful feature when trying to move or level bulk material, including loose soil or gravel. Skid shoes, quick-tach end plates, CAT II quick coupler bushings, and a gauge wheel are optional equipment



**3 PT. FINISH  
MOWERS**

60", 72" & 100"

In Stock For  
Immediate Availability!



**CY72**

Extra Tough Cutter for Extra Tough Cutting Jobs!

72" Cut; 540 or 1000 RPM, CAT II Heavy-Duty Three-Point Hitch, 140 HP

"Rhino-Built" Gearbox (1000 RPM); Cat. 4 Shielded Driveline, Slip Clutch Protection, Heavy-Duty Pan Blade Carrier, 3/16" Deck; 1/4"x9" Side Skirts, 1/2"x4" Updraft or Flat Blades, Rated for 4" Diameter Material; Safety Deflectors Standard



**SE's**

Tough and Economical Family of Cutters!

4', 5', 6' and 7' Models; 540 RPM, Shear Bolt or Slip Clutch Protection; Pan Blade Carriers, Updraft Blades, CAT I Three-Point Hitch, CAT II Three-Point Hitch (SE7); Rated for 1" Diameter Material, Safety Deflectors Standard

**BINKLEY-HURST  
BROS. INC.**

133 Rothsville Station Rd.  
P.O. Box 0395  
Lititz, PA 17543-0395  
(717) 626-4705 1-800-414-4705

Fax 717-626-0996

www.binkleyhurst.com

