

New Wilmington Livestock Auction
New Wilmington, Pa.
May 10, 1999
Report Supplied By PDA

CATTLE 92 [PDA]
SLAUGHTER STEERS: few Select 1-3 55 00-56.00.
SLAUGHTER COWS. one Breaker 75-80% lean 39 00, Boners 80-85% lean 33 75-37 75, Lean 85-90% lean 30 00-35 25 Shells down to 22 00.
BULLS. Yield Grade 1 1250-1985 lbs 43 25-48 00, Yield Grade 2 950-2220 lbs 39 50-42.75.
FEEDER CATTLE: HEIFERS few Medium 1-2 500-650 lbs 60.00-73 00, couple Large 2 445 & 470 lbs 58.00, HEIFERS Medium 1 300-550 lbs 59 00-81.00, Medium 2 500-650 lbs 48 00-60.00, BULLS: few Medium 1 420-660 lbs 57 00-73.00, Medium 2 550-840 lbs 40 00-54.50
CALVES 142...VEALERS: one Choice 320 lbs 87.00, Standard and Good 80-115 lbs 25 00-41.00, Utility 50-70 lbs 10.00-25 00.
FARM CALVES No 1 Holstein bulls 85-135 lbs 100 00-115 00, No 2 85-140 lbs 60 00-90.00, No 1 Holstein heifers 90-110 lbs 200 00-240 00, few No 2 95-130 lbs 115 00-175 00. Beef

type bulls and heifers 80-135 lbs 65 00-130 00
HOGS 262 Barrows and gilts 1.50 to 3 00 higher.
BARROWS AND GILTS 49-54% lean 230-280 lbs 39.00-40 10, 45-50% lean 230-300 lbs 37 35-38 75
SOWS US 1-3 300-610 lbs 30.00-34 50, few Medium 255-315 lbs 24 75-26 25. BOARS: few 425-630 lbs 10.75-14 75, few 220-270 lbs 16 00-57 00
FEEDER PIGS 33 US 1-3 60-90 lbs 30 00-34.00, 20-35 lbs 17 00-21 00, few 100-110 lbs 29 00 --- per head
SHEEP 103.. SLAUGHTER LAMBS few High Choice and Prime 105-125 lbs 80 00, Choice 45-85 lbs 90 00-111 00
SLAUGHTER SHEEP: 12 00-36 00
GOATS 11 Medium and Large 40.00-61.00, couple Large Kids 29 00 & 34.00. --- per head

Westminster Livestock Auction
Hagerstown, Md.
May 11, 1999

Report supplied by auction
SLAUGHTER COWS: 64 HEAD, STEADY \$1.00 HIGHER. UTILITY 37.00-41.00; HIGH DRESSING 41.50-44.25; CANNERS 34.00-38.00; SHELLY 33.00 DOWN.
BULLS: 5 HEAD, BETTER QUALITY. YG#1 2014 LBS. AT 47.00; 1 HG DRESS-

ING 1680 LBS. AT 53.50.
FED STEERS: 20 HEAD, STEADY. HIGH CHOICE PRIME 2&4 1200-1400 LBS. 63.00-65.00; CHOICE 61.00-63.00; LOW CHOICE 57.50-61.00.
FED HEIFERS: 8 HEAD. CHOICE 3&4 1100-1400 LBS. 61.00-63.00. VEAL CALVES: 113 HEAD. LOW CHOICE 312 LBS. AT 88.00; CULLS 85-110 LBS. 25.00-32.00, 60-85 LBS. 17.00-25.00.
FARM CALVES: STEADY. HOLSTEIN BULLS #1 95-120 LBS. 100.00-122.00; 88-95 LBS. 90.00-105.00; #2 85-95 LBS. 30.00-45.00; HOLSTEIN HEIFERS FEW. 70-90 LBS. 70.00-120.00; BEEF X BULLS TO 105.00.
BUTCHER HOGS: 63 HEAD. 1.00 HIGHER. #1&2 235-265 LBS. 37.00-38.00; #1&3 34.50-36.50; 270-290 LBS. 35.00-36.00; 1 LOT 300 LBS. AT 30.50.
SOWS: 25 HEAD. 300-450 LBS. 20.00-23.00; 400-500 LBS. 22.00-27.00, 500-600 LBS. 29.00-32.25.
BOARS: 600 LBS. TO 13.25.
STOCK CATTLE: 194 HEADS

North Jersey Livestock

Hackettstown, NJ
Report Supplied by Auction
Tuesday, May 11, 1999
CALVES .05-2.80.
COWS .19-.41% .
EASY COWS .10-.32% .
FEEDERS 300-600 LBS. 22-.80.
HEIFERS .35%-.63.
BULLS .35-.52.
STEERS .39-.67.
HOGS .02-.20.
ROASTING PIGS \$1.00-10.00.
BOARS .12-.15
SOWS .15.
SHEEP .10-.74.
LAMBS, EACH \$31.00-79.00.
LAMBS, PER LB. .05-1.31.
GOATS, EACH \$51.00-107.50.
KIDS, EACH \$26.00-92.50.
TOTAL 692.

Lancaster Farming, Saturday, May 15, 1999-A19

NEXT TUES., MAY 18 GRADED FEEDER PIG SALE.

New Holland Horses

New Holland Sales Stables
New Holland, PA
Monday, May 10, 1999
Report Supplied By Auction
243 HEAD. MARKET STEADY. WORK HORSES 885.00-1110.00. DRIVING HORSES 510.00-1125.00. RIDING HORSES 500.00-910.00. BETTER 1025.00-1300.00. REGISTERED RIDING 860.00-2550.00. KILLERS, HEAVYWEIGHTS 585.00-835.00; LIGHTWEIGHTS 185.00-500.00. PONIES 165.00-450.00. LARGE PONIES 500.00-610.00; 3 AT 700.00-950.00. COLTS 165.00-310.00; 2 AT 775.00-865.00.

**!!UNBEATABLE PRICES!!
SUPER TOUGH STEEL BUILDINGS**

SAVE UP TO 60%

- Equipment storage
- Workshops
- Hay and animal shelter

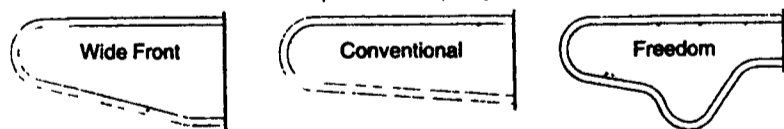
Available models:
25 x 32 (2 left) 45 x 90 (1 left)
30 x 44 (3 left) 50 x 100 (2 left)
40 x 62 (4 left) 50 x 150 (2 left)
call for other sizes

Factory Direct **800/825-5059**

Paul B. Zimmerman INC.

**Loop Stalls
Designed For Durability**

Finished with baked on TGIC Polyester Powder Coating Superior to Epoxy!



- Protection from rust & corrosion
- Resists acid & chemicals
- Chip resistant
- Smooth finish stays cleaner

Wide Front Loop Stalls
Versatile design offers greater cow comfort
Generous lunge space for head & neck between top & bottom of loop



Loop Stall Construction Features:
Heavy Duty Construction with 2 3/8" outside diameter high yield steel tubing with 12 gauge (108) wall
Spray arc transfer method used on welds



Added Value With Our 2 Coat Process!

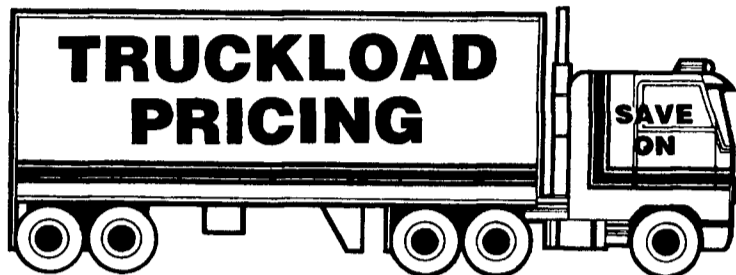
- Five step metal preparation, including iron phosphate conversion coating, to enhance adhesion & prevent undercoat corrosion
- Zinc rich epoxy powder undercoat
- TGIC polyester powder top coat, baked at 400° to fuse coats, forming a cross link molecular bond

Paul B. Zimmerman, Inc.

295 Woodcorner Rd. • Lititz, PA 17543 • 717/738-7365
1 mile West of Ephrata

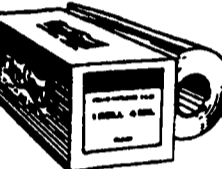
Call or write for additional information and the name of your nearest dealer

Hours: Mon.-Fri.: 7-5 Sat.: 7-11



POLY FILM

4 or 6 MIL
Black or Clear
3'x100' to
40'x100'



VARIOUS SIZES OF
BLACK & WHITE
BUNKER COVERS

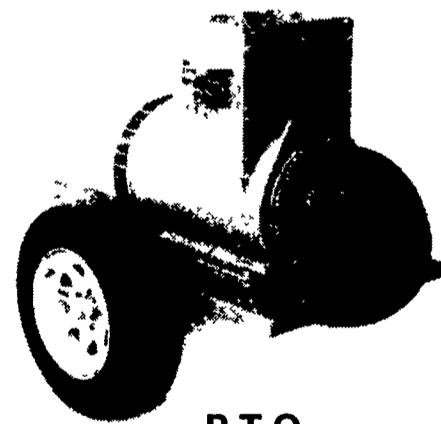
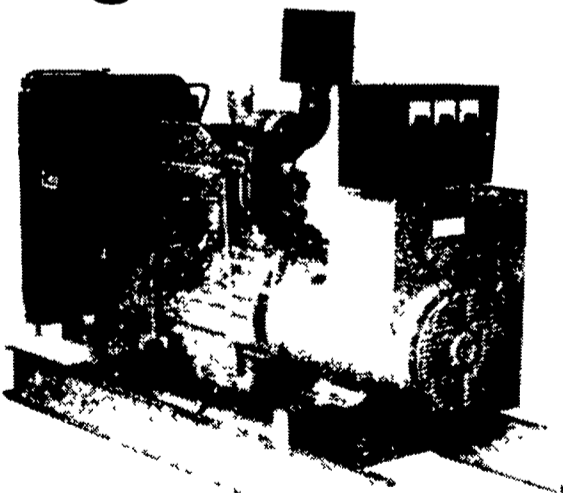


ACE HARDWARE
1739 West Main Street, Ephrata, PA 17522
(717) 738-4241 1-800-453-9243

Store Hours:
Mon.-Fri. 7:00 am to 9:00 pm
Sat. 8:00 am to 5:00 pm



Agricultural Generators



Automatic
L.P. Gas, Diesel, Natural
Gas Generators
5 to 2,000 KW

P.T.O.
Generators
25 to 100 KW

Service - Rental - New - Used

PENN POWER SYSTEMS
Power Generation Systems Specialists

330 Fonderwhite Road, Lebanon, PA 17042
Call Leonard Martin **717-273-4544**
Fax 717-273-5186