

**WILLIAM H. WESSELS
USED CARS**



94 Chevy K3500 4x4, Silverado 454 V-8, Auto, AC, Red, 86,107 Miles
\$15,900



95 Chevy Tahoe LT, 4x4, Auto, AC, PS, PB, Black, 88,236 Miles
\$17,900



94 K2500 4x4, Silverado, Ex Cab 350 V-8, 5 Speed, AC, 96,785 Miles, Matching Cap GVW 8600
\$15,900



96 Ford Taurus GL, Black, Saddle Int., 54,207 Miles
\$8,990



95 Ford Bronco XLT, 5.0 V-8, Auto, AC, 1 Owner, 74,280 Miles
\$13,900



97 Dodge Ram 2500 Cargo Van, 5.2 V-8, Auto AC, 16,240 Miles, w/Blance of Factory Warranty
\$14,900



97 Ford F150 Ex. Cab, XLT, 4x4, V-8, Auto, AC, 3rd Door, 40,256 Miles
\$21,900



67 Cadillac Convertible DeVille, Nice Older Car
\$7,990



96 GMC Suburban, 350 V-8, Auto, Rear AC & Heat, Leather, 3rd Seat, 65,012 Miles
\$24,900



92 Ford F150 Ex. Cab, 4.9L 6 Cyl., Auto, PS, PB, No AC, High Miles, Nice Work Truck
\$4,990



95 Chevy K1500 4x4, Ex. Cab Shortbed, 350 V-8, Auto, AC
\$16,900



89 Chevy K1500 Ext. Cab, Long Bed, 350 V-8, Auto, AC, 1 Owner, Nice, 98,210 Miles
\$10,900



94 Ford F150, 4x4, 6 cyl., manual, AC, 80,307 mi.
\$9,900



93 Ford F700 Dump, 5.9 Cummins Turbo Diesel, 5/2 Trans, 27,902 Miles, 28,000 GVW
\$18,900



93 Chevy Ex. Cab 4x4 Short Bed, 350 V-8, 57,000 Miles
\$15,900



92 GMC K1500 4x4, V-6, Auto, 90,206 Miles
\$7,990



93 Chevy Suburban K1500 4x4, 350 V-8, Auto, AC, 3rd Seat, Only 78,502 Miles
\$16,900



89 Chevy C3500, Dual Wheels, 350 V-8, 5 Speed, 96,207 Miles
\$7,990



91 Chevy K3500, 4x4, Utility Truck, 350 V-8, 4 Speed, 73,207 Miles
\$12,900



94 Chevy 2500, 350 V-8, Auto, AC, 111,207 Miles
\$10,900



97 GMC SLE 4x4, Voltac 350, Auto, AC, PW&L, 55,207 Miles
\$18,900



88 Ford Ranger, 4 Cyl., PS, AC, 5 Speed, 1 Owner, Only 26,278 Miles
\$3,990



87 GMC Topkick 7000 Cab & Chassis, 3208 Cat Diesel, 33,000 GVW
\$8,990



91 Chevy Ex. Cab Pickup, 4x4, V-8, Auto, AC, 116,502 MI.
\$8,990



94 Chevy 2500 Utility Box, 350 V-8, Auto, No AC, 72,107 Miles
\$10,900



97 Ford XLT 4x4, 4.6 V-8, 3rd Door, Auto, AC, Black, 70,306 Miles
\$18,900



87 Ford F250 4x4 Utility Truck, 6 9L Diesel, Auto, Runs Well - Uses Oil
\$4,990



99 Chevy Suburban LT 4x4, 36,204 Miles
\$32,900



92 GMC Topkick Cab & Chassis, 366 Gas, 5-2 Speed, 26,000 GVW, 127,106 Miles, Very Nice
\$14,900



97 GMC K3500, Ex. Cab, 4x4, 350 V-8, Auto, AC, SLT Pkg, 36,107 Miles
\$24,990



92 Ford Bronco XLT, V-8, Auto, 107,206 Miles, Only Average
\$4,990



91 Chevy K2500 350 V-8, 4x4, Auto, 180,000 Miles
\$6,990



97 Ford F150 X-Cab XL, 4x4, Auto, AC, 3rd Door, 29,207 Miles
\$17,900

**WILLIAM H. WESSELS
USED CARS**

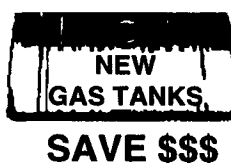
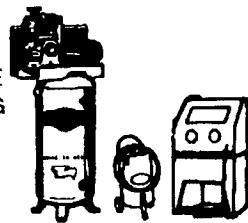
811 Route 15 Dillsburg, PA
1-800-440-4433 1-717-432-2918
Notary Public - Temporary Tags



4294 E. HARRISBURG PIKE
DEPARTMENT LF CATALOG
MIDDLETOWN, PA 17057
(717) 944-0318
Route 230 Between
Elizabethtown & Middletown

**FREE CATALOG
CALL OR WRITE
NOW!!**

**SAND BLASTERS &
BLAST CABINETS**



**TOOLS
AND
EQUIPMENT**

**AUTOBODY PARTS,
PAINTS & SUPPLIES**

**BUILD OR REPAIR YOUR
TRAILER. WE HAVE PARTS.**

MOST CLASS III HITCHES

\$79⁹⁹ to \$89⁹⁹



USED 4x4's Pickup's, Bronco's & Blazer - Call For Our Low Prices



NEW UTILITY TRAILERS
3,000 GVW, Extra Heavy Frames
w/Treated Lumber Deck, Lights,
Chairs, Etc Included!!!
5'x10' Deck.....**\$750**
6'4"x12' Deck.....**\$875**
Add-On Landscape
Ramp/Gate.....**\$145**

**WE BUILD OUR
OWN TRAILERS**



"NEW" 16' Deck Car Hauler
Has Two 24" Wide Diamond Steel Runners, Tube Steel Frame
4-Wheel Brakes, Safety Breakaway Kit & Full Lighting
Beavertail & Ramps, Removable Left Fender & More For **\$1,799**

Hours: Tues.-Fri. 9 AM - 6 PM Saturday 9 AM - 2 PM Closed: Sunday & Monday

KELLER BROS.

(Buffalo Springs) Lebanon, PA

717-949-2000 or 1-800-363-2767

LEBANON COUNTY'S HEAVY DUTY TRUCK HQTRS.

1999 F250's, 350's, XL, XLT & Duallys 4x4 &
Gas or Turbo Diesels



**1994 FORD F350
XLT, Diesel,
4x2, AT**



**1993 CHEV
K2500 Silverado,
4x4, V8, AT, A/C,
Matching Cap**



**Keller Bros. 6th Annual
STREET ROD - MUSCLE
CAR & TRUCK SHOW
SATURDAY, MAY 22**

8 AM to 4 PM

Rain or Shine

**1st, 2nd & 3rd Place Prizes &
Free Dash Plaques
For All That Enter**

**Free Registration -
Call For A Spot**

Questions - Call Artie or Dave

**1996 FORD F250
Reg. Cab, 4x4, AT, A/C,
1-Owner, Very Clean**



**1999 FORD F250
CREW CAB
Short Box, 7.3 Power
Stroke Diesel, 4x4,
Lariat**



**1999 FORD F350
REG. CAB 4x4
6-Speed, 7.3 Power
Stroke Diesel, A/C**



**1996 DODGE
2500 SUPER
CAB 4x4
AT, A/C, Loaded,
1-Owner, Low Miles**



**1998 FORD
WINDSTAR GL
Dual A/C, Loaded w/all
features, 2-in-stock,
1-white, 1-champagne**



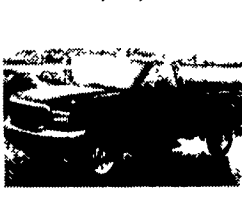
**93 JEEP
WRANGLER
4.0 5 Spd., A/C, Hard &
Soft Top, 4x4**



**1995 FORD E350
CLUB WAGON
12 Passenger, XLT, AT,
Dual Air, PW, PL, Very
Clean**



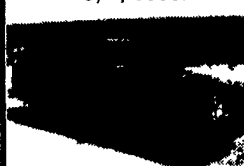
**1999 FORD F350
REG. CAB 4x4
V10, AT, A/C**



**1996 FORD F250
HEAVY DUTY
4X4
XLT, 351 V8, AT, A/C,
PW, PL,
Local 1-Owner Trade**



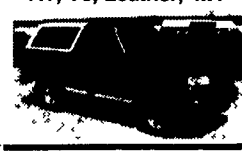
**1993 GMC
S-15 JIMMY
4x4, 4-Dr., 4.3 Vortec
V-6, AT, A/C, PW, PL,
C, T, Cass.**



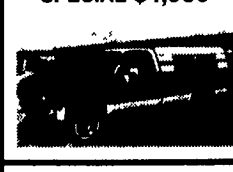
**1996 FORD F250
SUPER CAB, 4X4
AT, 460 Gas, XLT,
Very Nice**



**1993 FORD
BRONCO
EDDIE BAUER
AT, V8, Leather, 4x4**



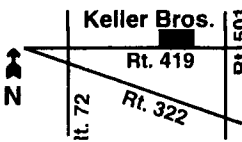
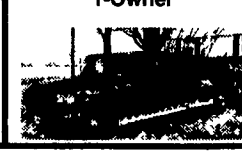
**1982 GMC K1500
4x4, AT, A/C, 6.2 Diesel,
One Owner
SPECIAL \$4,950**



**1994 FORD F150
SUPER CAB 4x4
AT, V8, 1-Owner,
Just Traded**



**1993 FORD F350
CREW CAB DUALY
7.3 Turbo Diesel, 5-Spd.,
Centurion Conversion,
1-Owner**



**KELLER BROS. FORD HAS
SERVED CENTRAL
PENNA. AREA FOR MORE
THAN 78 YEARS.**

