

FOR SALE

Massey Ferguson No 11 Front Wheel Drive
(Shovel) Loader
Less than 1000 hours
Good mechanical condition
with cab
Call Monday-Saturday 9am to 9pm
(410) 343-1190

General air brake trailer
20HA; GMC 7000 dump
truck; Case 580E loader
backhoe; JD 350 dozer
6-way; IH 125E turbo & Cat
935C crawler loaders;
Smith 100 air compressor,
540hrs; Leeboy T-800
paver; Gallion grader,
roller 5-8T. 610/326-4069.

International rough terrain
diesel forklift tractor type,
goes 20' high, excellent
condition. Asking \$10,000.
Call (609)897-2004.

JD 1990 544E Rubber tire
loader EROPS heat, air,
3rd valve GP bucket 90%
rubber, new paint, 1770
hours, 540-888-3778.

Light fixtures, used, in
good condition, different
sizes w/tubes, starting at
\$20. (717)757-4627.

Mitsubishi MS280,
70,000#, \$20,000. Cat 977,
new motor, new trans, 80%
track, cab & ripper,
\$38,500. 610-356-0217

Onan twin cyc electric start
engine, good running,
\$250. (717)469-0039.

Lancaster Farming, Saturday, May 15, 1999-D7

Pettibone gas forklift, hi-lift,
lifts 6,000 lb. 30', 4x4,
\$6,800. (814)467-8839.

Vanguard 15hp twin cyc
electric start engine, good
running \$500.
(717)469-0039.

WANT TO BUY all makes
and models of construction
equipment.
(301)371-5500.

Wayne chipper, excellent
condition, \$3,500. 12' chip-
per, Aspluth, motor is bad,
\$750. (215)885-1032.

Will repair, rebuild or re-
power your compressor,
welder or Gen-set engines,
gas or diesel. Experienced
& reasonable.
717-464-4461 leave
message.

JERRE MARTIN REPAIR

391 N. Farmersville Rd., Ephrata, PA 17522
(Just minutes off RT 222)
(717) 859-3283

Sales Service

Rentals Repairs

All
Machines
Listed For
Sale Are
Also For
Rent

Financing Available



JD 644B Choice of 2

\$26,000



'85 JD 655 Cab



'89 JD 550G Crawler
w/6 Way Blade

\$49,000

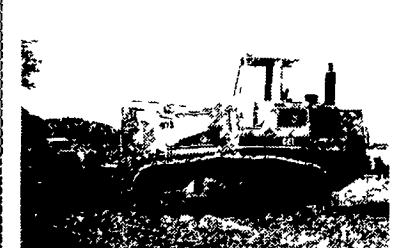


'94 CAT CS563 Roller Drum Drive

No Reasonable Doubt Repairs
Custom Repairs On All Makes of Farm Equipment

WE ARE BUYERS FOR LATE MODEL CONSTRUCTION EQUIPMENT NEEDING REPAIRS

'88 Cat 518 log skidder, winch & grapple.....	\$25,000	'91 JD 410D 4x4, EROPS, standard hoe.....	\$29,500
Cat 936 wheel loader.....	\$39,000	JD 455G crawler loader, excellent.....	\$30,000
Cat 951C crawler loader.....	\$18,500	JD 555B crawler loader, excel. cond.....	\$24,500
'93 Cat 953B crawler loader, new U/C.....	\$92,000	JD 644C wheel loader, good cond.....	\$33,000
Cat 955K crawler loader, 4N1 bucket, rebuilt motor, new paint.....	\$17,000	'87 JD 750B LGP dozer, straight w/tilt, ex. cond..	\$37,000
Cat 955L crawler loader, OROPS, good cond.....	\$23,000	'91 Hitachi EX100 excavator.....	\$23,000
'88 Cat 963 crawler loader, OROPS, new U/C.....	\$58,000	'83 Michigan 55C Wheel Loader, rebuilt motor, good cond.....	\$16,500
JD 350C crawler loader.....	\$11,000	JLG 40' man lift.....	\$10,500



Cat 973 For Sale or Rent, 88 Model
\$55,000 Or Rent By The Week or Month



Case 455C Crawler Loader, Cummins
Diesel, Good UC, 3,200 Hrs **\$16,500**



Komatsu D58E, 88 Model, 3600 Hrs
\$39,000



Cat 955L 4-in-1 Bucket, Good UC,
Excellent **\$25,000**

JD 655B, LGP Crawler Loader, 88
Model, New SALT U C **Coming In**
JD 410D Cab, 4x4,
Ext Hoe **\$27,000**

Case 1840 Skid Steer, 93 Model,
2100 Hrs., Air Boss Wheels,
Orange Paint **\$9,500**

Bobcat 743B, 94 Model,
2400 Hrs **\$8,500**

Cat 955K Crawler
Loader **Coming In**

Case 580D Tractor Loader 4x4,
3 Pt., PTO, Cab, 3600 Hrs **\$13,500**

Pettibone Rough Terrain Forklift
4x4, 6000 lb. Capacity. **\$6,500**

JD 450C Crawler Loader,
Bucket & Forks **Call**

Ford F8000 Dump Truck, Rebuilt
Motor, New Clutch,
Snowplow **\$11,800**

Dresser 510 Wheel Loader, New
Paint, New Rubber **\$13,500**

Cat 953, 81 Model, 40% U C,
Rebuilt Motor **\$34,500**

Ford 340B, Industrial Loader
Tractor, 3pt, PTO **\$8,500**

Ford 555B, Cab, 4x4, Standard
Hoe, 3200 Hrs **\$19,500**

Manitou S504TC, 4WD, 5000 Lb
Cap, 94 Model, Low Hours **\$21,000**

Jay Weaver, LLC

Reinholds, PA 717/336-7375

Financing and Lease Purchase Available • No Sunday Calls

 Case 580C Needs engine work \$4,500	 Standup cardboard baler 110 volt, brand new condition \$1,250	 Poclair Scrap handler set up with long stick & generator, no magnet. Looks very ugly but works \$5,000	 Kubota B7001 3 cyl 4 WD with finisher mower \$4,500	 Detroit 471 Marine Engine w/Rockford clutch, self contained, HVD starte w/5 KW side mounted generator, 200 hrs. \$4,500	 Cat 60 KW Generator, 400 hrs, V8 eng., Ready to go \$6,500 OBO	 Wet & Dry Vac Trailer 6V92 power, has bag house, 10 yd dump body on back \$30,000
 Perkins V8 540T Engine never used, still in crate \$5,000	 5000 gal tank 5 compartments, 2 reels, make good water tank \$2,000	 1987 Chev C30 Van, runs good \$2,000	 Generators Cat 100 KW prime, 3,500 hrs runs good. \$8,000	 Komatsu D20P LGP 6 way blade, 2800 hrs, painted \$8,500	 1988 Ford airport bus, 7.3 diesel rebuilt, runs good, rest TLC needed \$2,000	 Vacuum Trailers 2 Available
 Kubota L1500 20 HP with rotor tiller \$3,500	 Ingersol Rand 1050 CFM compressor V8, Cummins power \$2,500	 Concrete Buckets \$300 ea choice of 7	 Champ Towable f/lift, 8,000 lb. cap mast goes up 35 ft, needs eng. work \$4,500	 1994 Ford E250 Cargo Van, Gas Eng., Runs Good \$5,500	 Hyster H150 15,000 lb. Cap. needs breast plate & forks, runs & drives exc. \$4,500	 Waste Water Trailers 8 to choose from, alum. & S/Steel, some w/pumps, 5000 gals. to 9000 gals.
 Ford Aeromax 1988, Standup sleeper, 425 HP Cat, Air Ride, Clean Trk., Low Miles \$15,000	 GMC 1988 Cesspool Vac. trk, 2,000 gals. \$12,500	 Cat D4D Dozer power shift runs exc. but needs bottom work \$6,000	 Michigan 55A Loader st. frame, 353 Detroit runs good \$6,500	 IH Tractor 4200 8V71 Detroit eng., 13 speed, runs good, has 5th wheel wrecker on back \$4,000	RIVERSIDE EXPORTS INC. 1504A Route 206 Mount Holly, NJ 08060 Tel: (609) 265-1818 Fax: (609) 265-9666 E-Mail rse@interstat.net	