

'89 JD 8650, 240 HP, 4WD, C/A, 20.8x38 (Duals), 4975 Hrs., 3 REM, Quad, 3 pt. & PTO, Good Clean Machine

\$47,900



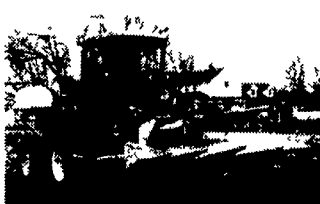
'85 JD 2950, 85 HP, MFWD, C/A, 18.4x38, 6660 Hrs., 2 Rem, HI-Lo, Very Good

\$22,000



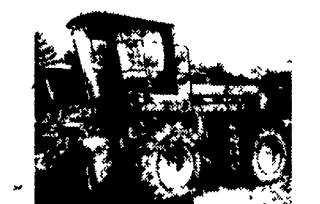
'89 JD 5830, 300 HP, 4WD, C/A, 23.1x26, 2,025 Hrs. Metal Det., Hydro, Very Nice with Kernal Proc. & Kemper 3000 4-Row Corn Head

\$78,705



'90 JD 5830, 300 HP, 4WD, C/A, 23.1x26, 2,609 Hrs., Metal Det., Hydro, Very Nice with Kernal Proc., Kemper 3000 4-Row Corn Head

\$72,500



'90 JD 5830, 300 HP, 4WD, Cab, 23.1x26, 2,549 Hrs., Metal Det., Hydro, Very Nice with Kernal Proc. & 6-Row Claas Corn Head

\$71,625



'90 JD 5830, 300 HP, 4WD, Cab, 23.1x26, 2,549 Hrs., Metal Det., Hydro, Very Nice, 7' Grass P/U & 6 Row Claas Corn Head

\$65,555

JD 6 Row Narrow Corn Head, Field Ready \$11,500
JD Kernal Processor, Field Ready \$9,500
JD 4 Row Converging Narrow Corn Head, Field Ready \$7,750
JD 13' Grass P/U Head, Floating Auger, Field Ready \$7,500
JD 7' Grass P/U Head, Field Ready \$3,500

'82 JD 5820, 280 HP, 2WD, Cab, 23.1x26, 4,875 Hrs., Metal Det., Hydro, Good Runner \$20,065
'83 JD 5820, 280 HP, 2WD, Cab, 23.1x26, 4,243 Hrs., Metal Det., Hydro, Good Clean Machine With 4-Row Narrow Corn Head \$26,635
'85 JD 5820, 280 HP, 4WD, C/A, 23.1x26, 3,534 Rotor Hrs., Metal Det., Hydro, Sound Power Train, With 7' Grass P/U Head \$29,665
'85 JD 5820, 300 HP, 4WD, Cab, 28Lx26, 5830 Eng with 1000 Hrs., Metal Det., Hydro, Good Clean Machine \$34,555
'83 JD 5820, 280 HP, 2WD, Cab, 23.1x26, 2,363 Hrs., Metal Det., Hydro, Very Good, With Kernal Proc & 4 Row Claas Corn Head \$38,505
'84 JD 5820, 280 HP, 2WD, Cab, 23.1x26, 3,960 Hrs., Metal Det., Hydro, Sound Power Train, With 4-Row Narrow Corn Head \$38,770
'87 JD 5830, 300 HP, 4 WD, Cab, 23.1x26, 6363 Hrs., Metal Det., Hydro, Sound Power Train \$26,985
'87 JD 5830, 300 HP, 2WD, Cab, 23.1x26, 3,556 Hrs., Metal Det., Hydro, Good Machine \$42,760
'88 JD 5830, 300 HP, 2 WD, Cab, 23.1x26, 2,518 Hrs., Metal Det., Hydro, Very Nice \$46,775
'88 JD 5830 300 HP, 4WD, Cab, 23.1x26, 3,187 Hrs., Metal Det., Hydro, Good Clean Machine \$47,770
'89 JD 5830 300 HP, 2WD, Cab, 28x26, 1803 Hrs., Since Eng. O/H, Metal Det., Hydro, Very Nice \$48,555

'87 JD 5830, 300 HP, 2WD, Cab, 23.1x26, 3,790 Hrs., Metal Det., Hydro, Good Clean Machine, Kernal Proc & 6-Row Claas Corn Head \$50,995
'92 JD 5830, 300 HP, 2WD, Cab, 28Lx26, 3,243 Hrs., Metal Det., Hydro, Good Clean Machine \$54,110
'88 JD 5830, 300 HP, 2 WD, Cab, 28x26, 3,521 Hrs., Metal Det., Hydro, Good Clean Machine With Kernal Proc. & 6-Row Claas Corn Head & 13' Grass P/U Head \$57,665
'90 JD 5830, 300 HP, 2 WD, Cab, 23.1x26, 3,526 Hrs., Metal Det., Hydro, Good Clean Machine With 7' Grass P/U Head & Kernal Proc. & Kemper 3000 4-Row Corn Head \$68,240
'92 JD 6610, 280 HP, 2WD, Cab, 30.5x32, 1,670 Hrs., Metal Det., Hydro, Very Nice, With Kernal Proc & 4 Row Narrow Corn Head \$77,775
'92 JD 6710, 310 HP, 2WD, C/A 24.5x32, 1,919 Hrs., Metal Det., Hydro, Very Nice, With Kernal Processor & 6-Row Claas Corn Head \$93,305
'98 JD 6750, 350 HP, 4WD, C/A 30.5x32, 330 Hrs., Metal Det., Hydro, Like New, With Kernal Processor & 10' Grass P/U Head & Kemper 4500 6-Row Corn Head \$195,000
'92 JD 6810, 435 HP, 2WD, C/A 30.5x32, 1,850 Hrs., Metal Det., Hydro, Very Nice, With 6-Row Corn Head \$97,925
'93 JD 6810, 435 HP, 2WD, Cab, 30.5x32, 1,717 Hrs., Metal Det., Hydro, Very Nice, With Kernal Proc & 6 Row Corn Head \$107,805
'93 JD 6810, 435 HP, 2WD, Cab, 24.5x32, 1,213 Hrs., Metal Det., Hydro, Very Nice \$119,705
'96 JD 6810, 435 HP, 2WD, Cab, 800/85R32, 1,014 Hrs., Metal Det., Hydro, Very Nice, With kernal Proc & Kemper 4500 6-Row Corn Head \$157,815
'93 JD 6910, 490 HP, 4WD, 4WD, Cab, 800/85R32, 1,550 Hrs., Metal Det., Hydro, Very Nice with Kernal Proc & Kemper 4500 6-Row Head \$149,990
'90 Claas 695 SL, 350 HP, 4WD, C/A, 28.1x26 2885 Hrs., Metal Det., Hydro, Good Clean Machine, With 10' Grass P/U Head & Kernal Proc \$158,905
'93 Claas 695 Mega, 350 HP, 2WD, C/A, 28.1x26 2,292 Hrs., Metal Det., Hydro, Very Nice, With 10' Grass P/U Head & Kernal Proc & 6 Row Claas Corn Head \$82,905
'93 Claas 695 Mega, 350 HP, 4WD, C/A, 28.1x26 2,800 Hrs., Metal Det., Hydro, Very Nice, With 10' Grass P/U Head & Kernal Proc & 6 Row Claas Corn Head \$88,260
'94 Claas 695 Mega, 350 HP, 4WD, C/A, 28Lx26 2,452 Hrs., Metal Det., Very Nice, With 10' Grass P/U Head & Kernal Proc & 6 Row Claas Corn Head \$92,150
'95 Claas 860, 415 HP, 4WD, C/A, 650/75x32, 2,250 Hrs., Metal Det., Hydro, Very Nice, With 10' Grass P/U Head & Kernal Proc & 6 Row Claas Corn Head \$137,830
'96 Claas 880 Jaguar, 495 HP, 4WD, C/A, 30.5x32 1,300 Hrs., Metal Det., Auto Sharpening, Hydro, Exceptionally Nice, 14 Grass P/U Head, Kernal Proc., Kemper 6000 8 Row Corn Head \$162,250
'97 Claas Jaguar 880, 495 HP, 4WD, C/A, 650/75R32, 790 Hrs., Metal Det., Auto Sharpening, Hydro, Exceptionally Nice With 10' Grass P/U Head & Kernal Processor \$173,880
Kemper 3000, 4-Row Head, Field Ready \$19,000
Kemper 4500, 6-Row Head, Field Ready \$28,900

'89 JD 5830, 300 HP, 2WD, C/A, 23.1x26, 3,600 Hrs., Metal Detector, Hydro, Good Clean Machine with 7' Grass P/U Head, 6-Row Claas Corn Head & Kernal Proc. \$54,750

'83 JD 5820, 280 HP, 2WD, Cab, 23.1x26, 4,243 Hrs., Metal Det., Hydro, Good Clean Machine with 4-Row Narrow Corn head \$26,635
'82 JD 5820, 280 HP, 2WD, Cab, 23.1x26, 5,430 Hrs., Metal Det., Hydro, Sound Power Train. \$22,500

'82 JD 5820, 280 HP, 2WD, Cab, 23.1x26, 4,057 Hrs., Hydro with 7' Grass P/U Head & 4-Row Narrow Corn Head \$27,900

'88 JD 5830, 300 HP, 4WD, C/A, 23.1x26, 1,988 Hrs., Metal Det., Hydro, Very Nice with Kernal Proc. & 6 Row Claas Corn Head \$67,270

'90 JD 5460, 250 HP, 2WD, 18.4x26, 4057 Hrs., Hydro with 7' Grass P/U Head & 4-Row Narrow Corn Head \$27,900

BEFORE YOU BUY ANY TRACTOR...
NEW or USED .. 2WD or 4WD ..
CHECK THE UNBELIEVABLY LOW PRICES at
DAVEY JOAN'S TRACTOR SUPER-MART
Location Junction of NY 104 and NY 13, Williamstown, NY 13493
5/15/99 **1-315-964-2294 or 800-813-8046**



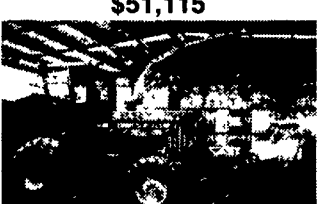
90 JD 5830, 300 HP, 2WD C/A, 23.1x26, 3000 Hrs., Metal Det., Hydro, Good Clean Machine With Kernal Proc.

\$51,115



'84 CASE 2294, 130 HP, MFWD, C/A, 18.4RX38, 2111 HRS., 2 REM, PS, Good Clean

\$23,900



85 JD 5820, 280 HP, 4WD, C/A, 23.1x26, 3,600 Hrs., Metal Detector, Hydro, Good Clean Machine with 7' Grass P/U Head, 6-Row Claas Corn Head & Kernal Proc.

\$54,750



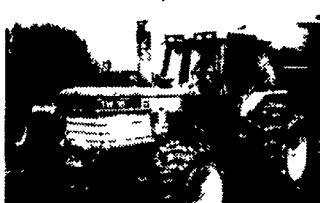
IH 666, 66 HP, 2WD, 16.9x38, 2926 Hrs., 1-REM, Hydro, Good Clean Machine

\$6,900



83 JD 5820, 280 HP, 2WD, Cab, 23.1x26, 4,243 Hrs., Metal Det., Hydro, Good Clean Machine with 4-Row Narrow Corn head

\$26,635



'87 Ford TW 35, 170 HP, MFWD, C/A, 30.5x32, 2,495 Hrs., 2 REM, 16F/8R, Good Runner

\$24,900



'82 JD 5820, 280 HP, 2WD, Cab, 23.1x26, 5,430 Hrs., Metal Det., Hydro, Sound Power Train.

\$22,500



83 SAME Jaguar 95, 95 HP, MFWD, C/A, 18.4x34 (New), 4,622 Hrs., 2 Rem., 24F/6R, Very Good

\$14,750



'82 JD 5460, 250 HP, 2WD, 18.4x26, 4057 Hrs., Hydro with 7' Grass P/U Head & 4-Row Narrow Corn Head \$27,900



Good "Used" WASA Hopper Type Rockpicker \$4,100

WE CAN HELP! CALL ANYTIME! OPEN 24 HOURS A DAY, 7 DAYS A WEEK. FREE ESTIMATES. FREE ENGINEERING. FINANCING AVAILABLE. IMMEDIATE DELIVERY. NEW & USED EQUIPMENT.
TICO IRRIGATION SYSTEMS

NEW! TICO/ABI ENGINE DRIVEN HARD HOSE IRRIGATOR
available in many sizes to automatically irrigate from 15 to 190 acres. Quickly portable from area to area. Hose lengths from 395 to 1640 ft. Variable travel speed selection with automatic constant compensation provides uniform irrigation over entire length of pass.

ACRES IRR./WK	ACRES RUN	HOSE I.D.	IRR. LENGTH	IRR. WIDTH	OPTIMUM GPM	MODEL	PRICE
17	1.20	1.46"	571'	150'	60	Micro 44	\$5,572
48	3.8	2.1"	840'	200'	125	63AT720	\$12,280
41.5	4.9	2.1"	1150'	200'	100	63AT1050	\$16,890
48	4.6	2.38"	980'	210'	130	70AT885	\$16,990
50	4.6	2.5"	930'	210'	150	75AT820	\$17,213
68.3	5.3	3.0"	1000'	240'	200	90AT870	\$20,150
67.2	5.9	3.0"	1120'	240'	200	90AT985	\$21,950
61	7.0	3.0"	1250'	240'	180	90AT1250	\$26,350
90.7	6.8	3.75"	1180'	275'	275	110AT1050	\$27,230
90.2	7.6	3.75"	1310'	260'	275	110AT1180	\$28,700
88.7	8.3	3.75"	1440'	260'	275	110AT1312	\$33,250
135	7.8	4.00"	1200'	300'	450	120AT1050	\$33,180
176	7.5	4.20"	1150	300'	500	125AT985	\$33,680
88.2	9.3	3.54"	1640	260'	260	110AT1510	\$35,200
131	9.0	4.00"	1410	280'	400	120AT1250	\$35,100
139	9.1	4.10"	1410	300'	400	125AT1250	\$35,900

TICO IRRIGATION SYSTEMS
IRRIGATION HEADQUARTERS EASTERN UNITED STATES
RT 13, WILLIAMSTOWN, NY 13493 • PHONE (315) 964-2214 or 800-813-8046

PUMP, Don't Haul Your MANURE!
WITH TICO IRRIGATION and WRIGHT-RAIN PUMPS ... you can pump and spread in one day what would take a week to haul, regardless of field conditions. We can Design & Install All Types Of Irrigation Systems: Solid Set & Frost Control, Trickle, Giant Sprinkler, Wheel Row, Center Pivot, Hand Move, Liquid Manure (Or Waste Water Disposal) Virtually All Makes Of Used & New Pipe, Couplers, Fittings, Gaskets, Pumps & Sprinklers Are On-Hand & Ready For Immediate Delivery

J & L Hay-Saver Feeds 20 Cattle
New, improved, round hay-bale feeder feeds large or small hay bales along with square bales. University proven hay savings. This feeder is built of heavy 1 1/2" pipe and heavy steel for ring.
Available with 3/4" plywood floors. This feeder is built to last.
J&L Equipment
156 Pompey Hill Road, Stoystown, PA 15563
814-893-5086

Excellent Ford Tractors
TW15 II, cab, air, 4WD, 18 4x38 duals 2,900 hrs
9600, cab, 20 8x38, weights, 5,500 hrs
8210 II cab, air, 4^{SPD}Ford Idr, 1,950 hrs
7740 SLE, cab, air, 4WD, 18 4x34, 2,600 hrs
7710 II, cab, air, DP, dual remotes, 18 4x34 2,950 hrs
7710 II, 4WD, roll bar, dual remotes, 18 4x34, 1,900 hrs
7710, cab, air, 4WD, 18 4x34, triple remotes
7700, cab, DP, dual remotes 16 9x38, 4,300 hrs
7600, DP, 1 remote, 16 9x38, weights, local trade
6640 SL, cab, air, 12x12 shuttle, 650 hrs
6610 II, cab air, DP w/creeper, dual remotes, 3 000 hrs
6610, rollbar, DP, dual remotes, 16 9x30 3 400 hrs
6600, DP, dual remotes, 540/1000, 15 5x38, 3,100 hrs
4100, diesel, 8 spd ^{SOLD}24, 1 remote, 3 700 hrs
4000, gas, 8 spd, PS, 13 6x38, 1975 model, 5 400 hrs
4000 SU, gas, 8 spd, 1 remote, 14 9x28, 3,800 hrs
3930, 4WD, 8x8 shuttle w/Ford Idr 450 hrs
3610, diesel, 8x4 syncro, dual remotes, 1,900 hrs
3600, diesel, PS, 8 spd w/Ford Idr, 3,800 hrs
3000, gas, PS w/Ford Idr, 2,400 hrs
JD 4050, cab, air, quad, 18 4x38, 3 400 hrs
JD 2950, 4WD, 1986, hi-low, dual remotes, 4,100 hrs
JD 6400, rollbar, ^{SOLD}pwr quad, R&P axle 2,400 hrs
JD 2755, cab, air, 4WD, creeper w/245 ldr, 2,700 hrs
JD 2755, 4WD hi-low, dual remotes, 1,400 hrs
JD 2755, hi-low, 540/1000, R&P, 245 Idr, 3,900 hrs
JD 2550, roll bar, hi-low, 15 5x38, R&P, 4,100 hrs
JD 2040, 1980 w/JD 145 ldr, 4,100 hrs
Equipment
NH 474 7' haybine
NH 472 7' haybine
7210 fits 5000 thru 7610
777D fits 6700 thru 7710 2WD
DUAL 210 fits 7700 & 7710, 2WD & 4WD
JD 145 w/valve, off JD 2030
Sims cab w/enclosure
Weights to fit most Ford tractors
All Tractors Tested On Our Farms.
Tractors Stored inside
-Please Call For Appointment-
Lease & Financing Available

Burkholder Bros.
Lebanon, PA 17042
(2 miles from Schaefferstown on Rt 419 South Turn right on Flintville Rd.)
2 Locations
717-272-2352 **717-949-2123**
Lloyd Leon
330 Crest Rd. 400 Flintville Rd.
Lebanon, Pa Lebanon, Pa.

2 FARM EQUIPMENT WANTED
WANTED: Loader fork heavy duty 6or8 prong to fit Int. 2000. 570/425-2480.
WANTED Pallet Stacker, hand crank or battery operated. Should lift approx 3'. (717)768-3157. Leave Message.

WANTED: USED FORD & KUBOTA TRACTORS
Call 1-800-309-FORD (3673)
Daytime