

# D & R EQUIPMENT INC.

Rt. 579, Ringoes, New Jersey  
(908) 782-5082

### USED TRACTORS

JD 4455, MFWD, PS, like new  
JD 7700, MFWD, 1,100 hrs  
JD 8430, 4WD w/PTO & 3 pt hitch w/duals  
JD 4840, cab & air  
JD 4640, power shift, cab & air  
JD 4240, cab & air, quad  
JD 4240, cab & air, power shift  
JD 4040, fender, sharp  
JD 4040, 4 post  
JD 2440, hi-tin  
JD 4450, cab & air, excellent  
JD 4250, MFWD, cab & air, power shift  
JD 2950, cab & air  
JD 2550, cab & air  
JD 2350, MFWD, cab & air  
JD 2555  
JD 2355, MFWD  
JD 2155  
JD 4430, cab & air, sharp  
JD 4230 quad range, fender  
JD 4030, fender  
JD 4320 w/cab  
JD 4320, fender  
JD 4020, side console, WF  
JD 4020, diesel, syncro  
JD 3020, diesel, WF  
JD 2510, gas  
IH 5130 MFWD, open  
IH 2444  
IH 1466  
IH 1086 cab & air  
IH 986, cab, air  
IH 186, hydro, cab & air  
IH 504, diesel  
MF 2705, cab & air, excellent  
AC 8010 cab & air, sharp

### COLLECTOR TRACTORS

JD 70, original  
JD 720, gas

### INDUSTRIAL

Ford 340B w/loader, sharp  
Gehl 4600 skid steer, very good  
Gehl 4610 skid steer, diesel

### USED PLOWS

IH Consortill 10'  
JD 2500 5 btm 18" spring reset  
AC 5 btm  
JD 5 btm

### USED COMBINES

444 JD corn head  
JD 643 corn head  
JD 443 corn head  
JD 343 corn head  
JD 7720, 4WD, 2,300 hrs, excellent  
JD 6620, Hydro, 1983  
JD 4400, diesel  
JD 3300 w/2 row head  
JD 3300, diesel, 1978

### HAY EQUIPMENT

JD 346 wire baler  
JD 347 twine baler  
NH 320 baler  
NH 630 round baler  
NH 848 round baler, excellent  
NH Rake  
NH 1033 stack wagon

### MISCELLANEOUS

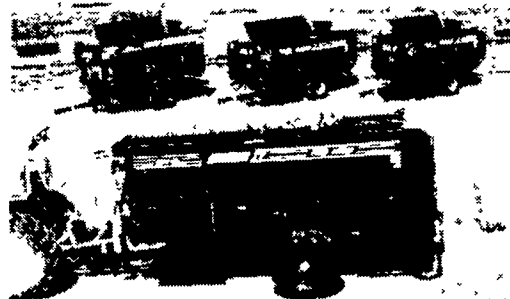
Demco 500 gallon sprayer, electric controls & hyd booms  
(2) Gravity Wagons  
Taylorway 25' disc  
18' IH field cultivator, hyd fold  
JD 7000 6R conservation planter, liq insect, very good  
NH 352 grinder mixer, excellent  
Gehl 800 grinder blower  
Bush Hog 2845 Ldr, fits JD 4020, like new  
IH 2350 Loader  
JD 58 loader

'85 GMC C-7000 w/26' Jerr-Dann Body, Air Brakes, Air Tag Axle

### LOADER TRACTORS

JD 6200, MFWD w/640 ldr  
JD 6200, MFWD, cab, air, 1,000 hrs  
JD 2840 w/loader  
Int 786, 4 post w/2350 ldr  
Ford 7710, 4WD, cab & air w/ldr, 1,200 hrs  
Ford 545, 4WD, 3 pt, PTO  
Ford 340B w/ldr, excellent

## ROTO-MIX IV FEED MIXERS



With ROTO-MIX IV you reduce fines, minimize shrinkage, and eliminate dead spots. The gentle tumbling action mixes fragile flaked and high-moisture ingredients without grinding, resulting in a fluffier, more nutritional ration.

The ROTO-MIX end-to-end... side-to-side mixing system provides the most thorough TMR available, ensuring that your cattle will consume a balanced ration of nutrients in every pound of feed they eat.

### Trailer Models Available For Demo

Also available

## OSWALT® Mixers by J-Star

### LAPP'S BARN EQUIPMENT

5935 OLD PHILADELPHIA PIKE,  
GAP, PA 17527  
PHONE: 717-442-8134  
WE SERVICE WHAT WE SELL  
- Radio Dispatched Trucks -  
Call or write for our Free Catalog



## KELLER'S FARM MACHINERY

116 Richlandtown Pike  
Quakertown, PA 18951  
215-536-4046

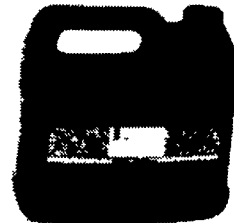
Ford 8770, 4x4 w/cab, duals, super steer  
Ford 8670, 4x4, cab, duals, super steer  
JD 2240 w/loader, 4x4  
Ford 1920 4x4, cab w/loader  
Ford 1620 4x4, w/Ford belly mower  
Ford 655A 4x4 w/cab loader & backhoe  
Ford 800 w/LPTO  
Ford 801, PS w/loader  
Ford 2910, 8 spd, PS  
Ford 3000 PS, LPTO  
Ford 7710, w/cab  
Ford 445D loader & cab, New  
Ford 9600 w/cab  
Ford TW20 4x4 w/cab  
Ford 5000D 8 Speed w/Loader  
Ford 8700, w/Cab  
Ford 340 w/loader, 3 pt. PTO  
Ford 2000 PS Loader  
Ford 2600, PS, live PTO  
Ford 4610, 8 speed, PS  
Ford 4000, PS, LPTO  
Satoh 650G w/loader  
Oliver 550 live PTO  
Farmall Cub w/IH belly mower  
Case 430, 3 pt. w/loader  
Kubota B9200 4x4 w/loader & belly mower  
MF 135 w/LPTO & Power steering  
NH 155 PTO Spreader  
Ford 515 3 pt mower  
Brillion 13 shank disc chisle

## Use ORIGINAL

## Massey Ferguson Lubricants For All Of Your Equipment!



Convenient 5 Gallon Bucket



New 4 Quart Bottle!

All formulated to meet the performance requirements on today's low emission engines

Available in 110 & 330 Gallon Containers!

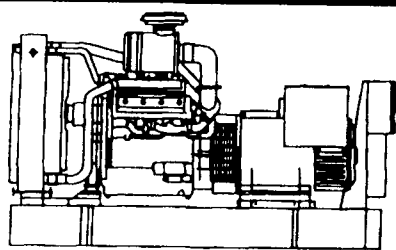
ORIGINAL



MASSEY-FERGUSON

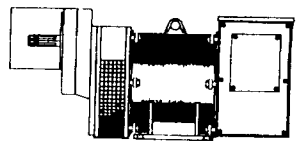
## GENERATOR SYSTEMS

1-800-779-8809



New & Used 5 to 2500 KW  
Diesel • Propane • Natural Gas

24 Hour Emergency Service  
Sales - Installation  
Maintenance Contracts • Rentals



### Tractor Driven

Generators 10-150 KW  
1800 RPM Brushless  
New & Used

# DYNA-TECH<sup>®</sup> Ind.

Dynamic Technologies

## DYNA-TECH INDUSTRIES

602 E. Evergreen Rd., Lebanon, PA 17042  
717-274-8899 FAX 274-8934

Visit us on The Web Site: <http://www.dynagen.com>  
Ask About Our Lightning & Surge Protection Units  
Panel Mount • Plug-In • Electric Fence Protection



Leasing Available

Go to the Massey Ferguson Dealer below for great deals on lubricants

### LONGENECKER'S, INC.

Williamsburg, PA  
814-793-3731

### PEOPLES SALES AND SERVICE

Oakland Mills, PA  
717-463-2735

### D. W. OGG EQUIPMENT

Frederick, MD  
301-473-5075

### WATSON'S INC.

Sharon, PA  
724-346-6514

### MEYER'S IMPLEMENTS, INC.

Greencastle, PA  
717-597-2176

### M.M. WEAVER & SONS, INC.

Leola, PA  
717-659-2321

### LINCOLN SUPPLY & EQUIPMENT

Somerset, PA  
814-443-1691

### RODIO TRACTOR SALES

Hammonton, NJ  
609-561-0141

**PARTners in your success.**

Massey Ferguson is a wholly-owned subsidiary of AGCO Corporation