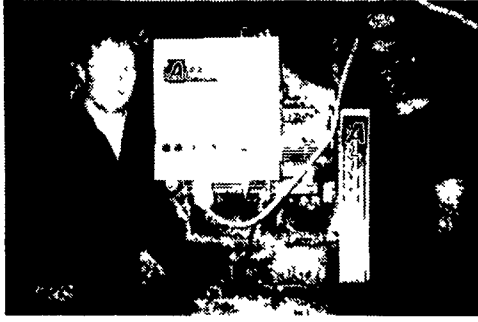
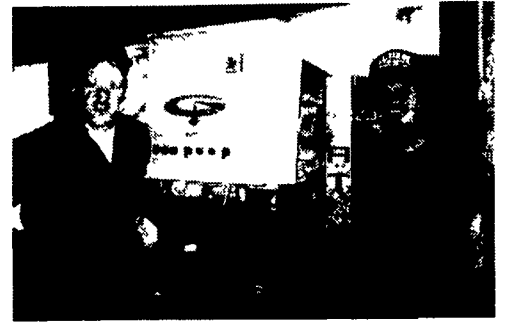


“We have more versatility with our Harvestore® structures than with any of our other silos.”



**Albert Heimbach & Sons
Selinsgrove, Snyder Co., PA**

1,000 acres 203 cows on test
24,500 lbs. milk 3.6% B.F. 76 lbs./cow
Only 7.6% of milk check used for purchased protein!



Dave (left) and Wayne (right) Heimbach with Wayne's son Mike

The Heimbach family has been farming with Harvestore structures since 1971.
Here's what they have to say!

“We can maintain better feed quality over a broader range of moisture levels with our Harvestores than with a conventional silo.”

“We unload 7,000 lbs. of haylage a day from our 2590 Harvestore with our Atlas™ unloader.”



PENN JERSEY PRODUCTS, INC.
YOUR LOCAL INDEPENDENT AUTHORIZED HARVESTORE® SYSTEMS DEALER
P.O. BOX 7 • NEW HOLLAND, PA 17557 • 717-354-4051

SERVICE DEPOTS:

Belleville, PA
800-310-9333
Rory Peachey, Mgr.

Everett, PA
814-652-2934
Frank Samuel, Jr., Mgr.

Berlin, PA
800-434-3308
Joe Simpson, Mgr.

Newville, PA
717-776-3397
Maynard McCullough, Mgr.

Columbus, NJ
609-298-7136
Charles Van Mater, Mgr.

In Maryland
800-354-4052

The results you may achieve with your Harvestore® System depend primarily upon your management skills and may vary from successful results achieved by others. Any application in a particular farming operation requires the advice of qualified experts and is subject to limitations of good management, weather or other conditions present at the individual location. Harvestore is a registered trademark of A.O. Smith Engineered Storage Products Co.