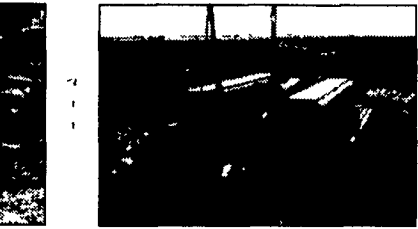
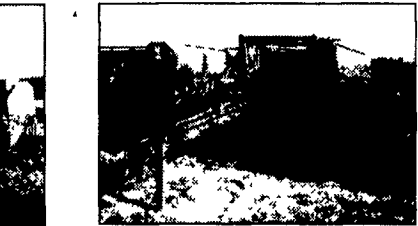


WE HAVE IT IN STOCK

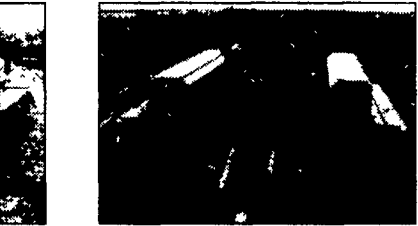
USED DRILLS



B 16818 CIH 5500 Drill w/Press Wheels, 7" Spacing, 52 Rows, \$13,500



B 16976 GP 24' Conventional Folding Drill, 48x6, 4x12 Press Wheels, \$16,500



B 16912 GP 30' NT Drill, 16" Turbo Coulters, Good Condition, \$22,500



C 30623 Krause 5213 NT Drill, 13", \$9,900



C 15463 IH 5100 21x7 Drill w/Press Wheels, \$2,800

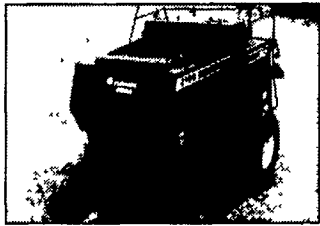
USED HAY & FORAGE



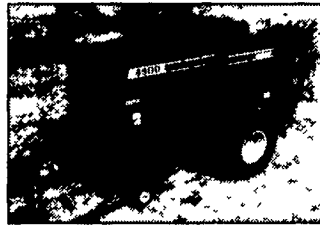
A 16564 CIH 8590 Baler, \$44,500



C 22216 CIH 8590 Baler, \$54,400



A 21779 Hesston 4900 Baler, \$28,300



A 22444 Hesston 4900 Baler, \$42,500



B 16080 JD 530 Round Baler, \$8,900



A 21994 NH 2000 Baler, \$26,500



B 22168 CIH 8575 Baler, \$45,000



A 22287 CIH 8850 15' Disc Windrower, \$39,500



A 22296 JD 1470 12' Disc Mower Conditioner, \$10,600



A 21977 NH 499 Mower Conditioner, Good Conditioning Rolls, \$4,475

USED LANDSMAN

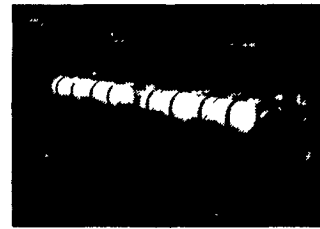


B 14047 Krause 3124A 24' Landsman w/Tire & Reel, New Blades, \$15,900



B 17463 Krause 6331 31' Landstar, \$32,000

USED PLANTERS



B 16778 JD 7240 8 Row 30" Planter, Very Good Condition, \$22,500

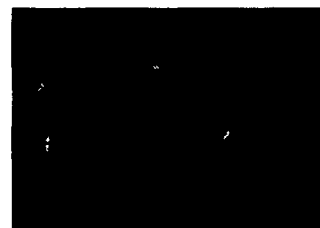


B 16373 JD 7100 12 Row 30" Planter, Liquid Fertilizer, Granular Insecticide, \$10,500

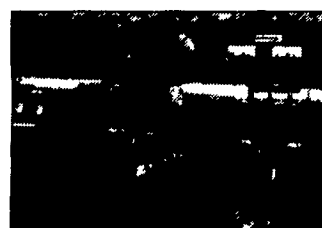
B 16991 IH 500 12 Planter
B 17064 IH 800 Planter
B 16373 JD 7000 12RN Planter
B 16778 JD 7240 8R Planter
B 15087 Lill 10' NT Drill

A 21449 CIH 900 6RN Planter
C 30732 NI 9000 Corn Planter 4x38" Liquid

OTHER USED TILLAGE



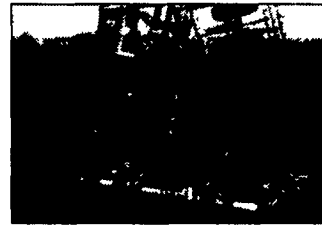
A 22238 CIH Model 14 7-Shank V Ripper, Automatic Reset Shanks, Gauge Wheels, \$5,300



B 16888 Unverferth 35' Rolling Basket, Good Condition, \$6,500



B 17128 JD 510 Disc Ripper, 5 Shank, Spring Cushion Shanks, 15" Center Duals, \$9,800



B 16855 Krause 4133 Field Cult., 31', \$4,200

USED DRILLS

B 30017 GP 15' NT Drill
A 20740 Houck Twin Drill Hitch
A 22512 IH 510 Drill 16x7
A 20710 KR 5215 15'
C 15463 IH 5100 Drill 21x7 w/Press Wheels
C 30533 IH 510 13x7
C 30623 KR 5213 NT Drill

USED HAY & FORAGE

B 22168 CIH 8575 Baler	A 22545 CIH 8312 Mower Cond
B 17529 CIH 8850 Wndrwr	A 22296 JD 1470 12' Mower Cond
B 17530 CIH 8850HD Disc Header	A 22297 JD 1470 12' MowerCond
B 22168 CIH 8575 Baler	A 22450 NH 640 Round Baler
B 16080 JD 530 Rd Baler	A 21994 NH 2000 Baler
C 30598 Hesston 5510 Round Baler	A 21977 NH 499 Mower Cond
C 30430 NH 499 Mower Cond	A 22179 Hesston 8500 Windrower
C 22167 NH #27 Blower	A 22444 Hesston 4900 Big Baler
C 30553 CIH 60 RS Rotary Cutter	A 20571 Hesston 7155 Forage Harv.
C 21941 Gehl 1600 Round Baler	A 22287 CIH 8850 Windrower
C 30825 JD 336 Baler & Pan Thrower	A 16564 CIH 8580 Baler
C 30902 JD 216 Forage Wagon	A 22217 CIH 8581 Accumulator
C 30709 Woods 315 Batwing Mower	
C 30678 Woods 121 Mower	
C 30904 5' Rotary Mower 3PT Hitch	
C 30911 Woods HD315 Batwing Mower	

OTHER USED TILLAGE

B 16321 CI 720 6x16 Plow	B 16048 IH 5x16 Plow
B 17244 JD 29' Cult	B 17320 IH 55 11' Chisel Plow
B 21468 JD 714 Chisel Plow	B 16942 Lndll 18' Chisel Plow
B 16625 JD 6x16 OL Plow	B 17191 Unfth 27' Rolling Harrow
B 21468 JD 714, 17 Shnk Chsl Plow	B 17325 Unfth 29' Rolling Harrow
B 16092 JD 8RW Cult	B 16888 Unfth 35' Rolling Harrow
B 17056 JD 100 Chisel Plow	A 21635 IH 710 6x18 Plow
B 17042 JD 910-6 Subsoiler	A 22238 CIH 14' V-Ripper 7 shnk
B 17128 JD 510 Disc Ripper	A 22304 Dunham 12' 6" Packer
B 16855 KR 4133 31' Cult	A 22317 Landoll 15' Chisel Plow
B 17467 Magee 32' Cult	A 22182 Krause 4430 Packer
B 16856 BR 34' ND Packer	A 22506 Brillion 14' Packer
B 17320 IH 55 11' Chisel Plow	A 22400 Brillion 28' Packer
B 17476 IH 145 Plow	A 22299 DMI Tiger II Subsoiler 7shnk
B 17321 IH 720 Plow 6x16	

JUST ARRIVED

NEW TRADE-INS TO THE McALISTERVILLE STORE

30920 CIH 7120 2WD Cab	30935 JD 10' Offset Disc
21615 JD 13' Chisel Plow	17801 Case 1840 Uni-Loader
30821 JD 5 Bottom Plow	

TO THE MIDDLETOWN STORE

17721 CIH 5240 Tractor
17791 CIH 1835C Skidsteer
17866 IH 1460 2WD Combine

HOOBER'S ADVANCED MACHINERY SERVICE

HOOBER

THREE LOCATIONS

(A)-INTERCOURSE, PA 800 732-0017 (B)-MIDDLETOWN, DE 800 341-4028 (C)-McALISTERVILLE, PA 800 433-6679

CASE III
Up Time. All the time.