



HOG MARKETS

New Wilmington Graded Feeder Pig Sale

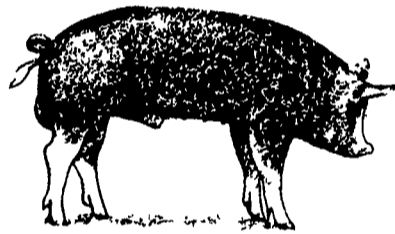
New Wilmington, PA
April 16, 1999

231 FEEDER PIGS. 51.0 LBS. PER PIG, 73.37 PER HUNDREDWEIGHT; 37.44 PER HEAD.
US#1-2: 33 HEAD 30-50 LBS. 77.50-92.50; 42 HEAD 50-60 LBS. 80.00-85.00, ONE LOT 102.50; 19 HEAD 60-70 LBS. 70.00-80.00; 10 HEAD 70-85 LBS. 57.50-65.00; 7 HEAD 100-120 LBS. 40.00-50.00.
US#2: 23 HEAD 30-40 LBS. 55.00-85.00, ONE LOT 92.50; 43 HEAD 40-50 LBS. 77.50-95.00; 8 HEAD 50-60 LBS. 70.00-80.00; 9 HEAD 60-90 LBS. 57.50-60.00.
US#2-3: 16 HEAD 30-40 LBS. 67.50-75.00; 12 HEAD 40-60 LBS. 50.00-87.50.

New Holland Hogs

NEW HOLLAND, PA
MON APRIL 19, 1999

USDA-PA Dept Ag Market News NEW HOLLAND HOG AUCTION FOR MONDAY APRIL 19, 1999 HOG RECEIPTS TODAY 837 LAST MONDAY 802 LAST YEAR 1160 BARROWS AND GILTS: Compared to last week, prices were steady to .50 lower. 49-54 percent lean: 210-260 lbs 28.00-29.00 Few up to 31.25 45-50 percent lean: 230-285 lbs 26.00-28.25 40-45 percent lean: 280-325 lbs 24.10-27.25 Few 350-440 lbs 19.00-20.25 SOWS: Prices were 1.00-2.00 higher. US 1-3: 300-400 lbs 18.00-21.00 400-450 lbs 21.00-23.00 450-500 lbs 23.00-25.00 500-700 lbs 25.00-28.75 BOARS: 300-700 lbs 9.00- 9.50 200-300 lbs 14.00-15.00



New Holland Feeder Pigs

New Holland, PA
Wed., April 21, 1999
Report Supplied by USDA
TODAY 670 HEAD
LAST WEDNESDAY 439
LAST YEAR 453

TREND: COMPARED TO LAST WEEK: FEEDER PIGS WERE AS MUCH AS 35.00 LOWER. DEMAND WAS LIGHT ON A GOOD OFFERING OF LIGHTWEIGHT FEEDING PIGS THAT ARE VIRTUALLY GUARANTEED TO SHOW A PROFIT. SLAUGHTER PIG PRICES WERE ALSO LOWER WITH PACKER BUYERS BEING MORE SELECTIVE AS TO QUALITY THAN USUAL AROUND 70 PERCENT OF SUPPLY WAS SOLD FOR SLAUGHTER. ALL PIGS WEIGHED AND GRADED ON ARRIVAL AND SOLD BY THE HUNDRED WEIGHT.

US#1-2: 41 HEAD 20-25 LBS. 60.00-65.00; 75 HEAD 25-45 LBS. 40.00-50.00; 2 PKG 78 LBS. 46.00.
US#2: 71 HEAD 25-35 LBS. 29.00-35.00; 7 PKG 41 LBS. 42.00.
SLAUGHTER: 71 HEAD 20-25 LBS. 80.00-110.00; 42 HEAD 20-27 LBS. 40.00-70.00 (2S AND 3S); 27 HEAD 22 LBS. 55.00 (UTILITY); 70 HEAD 30-35 LBS. 85.00-110.00; 151 HEAD 30-35 LBS. 85.00-110.00; 151 HEAD 30-35 LBS. 25.00-42.00 (2S); 24 HEAD 45-55 LBS. 44.00-52.00; 7 PKG 90 LBS. 53.00.
AS IS: 19 HEAD 15-20 LBS. 35.00-80.00; 32 HEAD 30-50 LBS. 25.00-30.00.

ALL PIGS CONSIGNED TO WED. FEEDER PIG SALE MUST ORIGINATE FROM A QUALIFIED NEGATIVE OR MONITORED HERD.

Indiana Hogs

Springfield, IL
Wed Apr 21, 1999

USDA-II Market News
Indiana-Ohio Direct Hogs Close
Negotiated sales: 13500 Wk ago: 11700 Yr Ago: Estimated Daily movement: 35000 Wk ago: 32900 Yr Ago 35900 Yesterday's actual movement: 30300 Week to date total movement: 96300 Wk ago: 93000 Yr Ago 104900 Trend: Steady to .54 higher on a carcass basis. Demand good with a moderate movement.

MAJORITY OF TODAY'S SALES (185 lb carcass) Percent Country buying points Plant Delivered Lean carcass sales live 74% yld carcass sales live 75% yld 51-52.9(1)36.25 -41.51 26.83 - 31.00 37.00 - 43.59 27.75 - 32.69 mostly 38.64 -41.51 28.59 - 30.72 mean 41.00 mean 30.75 BASE MARKET 49-51 PCT LEAN CARCASS BASIS PLANT DELIVERED.(2) 37 -41.29 WTD AVG Not Available

Calculated Percent Country buying points Plant Delivered Lean carcass sales live 74% yld carcass sales live 75% yld 55-56.9 40.32 -43.51 29.84 - 32.20 41.32 - 45.59 30.99 - 34.19 53-54.9 39.48 -42.51 29.22 - 31.46 40.48 - 44.59 30.36 - 33.44 51-52.9(1)36.25 -41.51 26.83 - 31.00 37.00 - 43.59 27.75 - 32.69 49-50.9 34.25 -39.21 25.35 - 29.02 35.00 - 41.29 26.25 - 30.97 47-48.9 32.25 -38.21 23.87 - 28.28 33.00 - 40.29 24.75 - 30.22

Sows: Steady
US 1-3 300-400 lbs 17.00-19.00, few 16.00 400-500 lbs 18.00-20.00 500-600 lbs 20.00-23.00 few over 600 lbs 23.00-25.00, few 26.00-28.50

Boars: under 300 lbs 12.00-15.00, few to 17.00 over 300 lbs 8.00-10.00

(1) majority of area hog population average percent lean (2) Based on individual packer buying programs. No premiums or discounts included.

Lancaster Hogs

Lancaster Stockyards

Wednesday, April 21

Report Supplied by USDA

HOG MARKET TODAY 150 ESTIMATED; LAST WEDNESDAY 116; LAST YEAR 835.

BARROWS AND GILTS: COMPARED TO LAST WEEK, TOP LEAN HOGS SOLD 1.50 HIGHER WHILE GRADES WERE MOSTLY STEADY. 49-54 PERCENT LEAN: 240-260 LBS. 27.50-28.50; 45-50 PERCENT LEAN 230-270 LBS. 23.00-24.50.

SOWS: NO RECENT COMPARISON. US#1-3 FEW 550-600 LBS. 20.00.



HAY & GRAIN MARKETS

Diffenbach Auction Center

New Holland, Pa.

Monday, April 19, 1999

Report Supplied by Auction
TOTAL LOADS: 137.
ALFALFA: 65.00-147.00.
MIXED HAY: 55.00-155.00.
TIMOTHY: 52.00-135.00.
BROMEGRASS: 50.00.
ORCHARDGRASS: 52.00-135.00.
STRAW: 85.00-137.00.
EAR CORN: 79.00-108.00.

Wolgemuth Hay

Leola, Pa.

Wed., April 21

Report Supplied by Auction
75 LOADS.
MIXED HAY: 75.00-155.00.
ALFALFA: 55.00-125.00.
TIMOTHY: 70.00-135.00.
GRASS: 70.00-132.00.
CORN: 80.00-86.00.
STRAW: 67.00-100.00, 140.00 LOAD.

Weaverland Auction Hay Auction

New Holland, Pa.

Thurs., April 22, 1999

Report Supplied by Auction
TOTAL LOADS: 39.
ALFALFA: 60.00-130.00.
TIMOTHY: 85.00-130.00.
MIXED HAY: 62.00-165.00.
GRASS: 55.00-85.00.
STRAW: 77.00-120.00.
EAR CORN: 78.00-94.00.
WOOD: 62.00.
SALE EVERY THURS. 10 A.M.

Dewart Hay & Livestock

Dewart, Pa.

Monday, April 19

Report Supplied by Auction
STEERS: 50.00-63.75.
HEIFERS: TOO FEW TO QUOTE.
GOOD COWS: 30.00-37.50.
CANNERS AND CUTTERS 20.00-30.00.
BULLS: 38.00-52.50.
VEAL 90-190 LBS. 100.00-230.00, 70-90 LBS. 25.00-100.00.
HOGS: 20.00-27.50.
SOWS: 14.00-24.00.
FEEDER PIGS: 8.00-23.00 HEAD.
HAY: 38 LOADS, 50.00-165.00.
STRAW: 6 LOADS, 57.50-60.00.
CORN: 2 LOADS, 60.00 AND 70.00.
OATS: 4 LOADS, 2.20-2.35 BU.

Hay Market Summary

April 19, 1999

Eastern Pa.

HAY & STRAW MARKET FOR EASTERN PA - (ALL HAY GOOD GRADE AND BETTER. PRICES PAID BY DEALERS AT THE FARM & PER TON) HAY AND STRAW STEADY. ALFALFA 80 00-120.00, FEW TO 140 00, MIXED HAY 70 00-120 00, TIMOTHY 70 00-120.00; STRAW 60.00-70.00; MULCH 20 00-45.00

SUMMARY OF LANCASTER CO. HAY AUCTIONS FOR WEEK ENDING 04/16/99 PRICES PER TON. LOADS 143 HAY, 27 STRAW & 6 EAR CORN. ALFALFA 75 00-140 00; MIXED HAY 75.00-150.00. TIMOTHY 70 00-137 00, STRAW 70 00-98.00; EAR CORN 75 00-97 00.

SUMMARY OF CENTRAL PA HAY AUCTIONS FOR WEEK ENDING 04/16/99. PRICES PER TON: LOADS: 304 HAY, 37 STRAW & 19 EAR CORN ALFALFA 65 00-140.00; MIXED HAY 70 00-135.00; TIMOTHY 60 00-90.00, STRAW 50 00-100 00; EAR CORN 70.00-80.00.

Morrison's Cove Livestock Auction Hay Report

Martinsburg, Pa.

April 19

Report Supplied by Auction
ALFALFA: 150.00-170.00.
ALFALFA GRASS: 100.00-150.00.
TIMOTHY: 60.00-105.00.
GRASS: 90.00-155.00.
MIXED HAY: 32.50-87.50.
STRAW: 55.00-80.00.
FODDER: 1.00 BALE.
ORCHARD GRASS: 90.00.
HAY AUCTION EVERY MONDAY AT 12:30 P.M.

Green Dragon

April 16

Hay, Straw & Grain

Report Supplied by Auction
TOTAL LOADS: 73.
MIXED HAY: 30 LOTS, 74.00-150.00.
ALFALFA: 15 LOTS, 54.00-140.00.
TIMOTHY: 6 LOTS, 70.00-110.00.
STRAW: 8 LOTS, 75.00-98.00.
EAR CORN: 3 LOTS, 77.00 AND 79.00.
ORCHARD GRASS: 9 LOTS, 87.00-160.00.
OATS: 2.75 BU.
BALEAGE: 25.00 BALE.

Whole Cottonseed & Other feed ingredient needs:

For Competitive Prices & Timely Delivery

Call the AG Ingredients Group

Serving the dairy and feed industry

717-295-8718 or Toll Free 888-636-2271

HERE TODAY • HERE TO STAY
For Buying or Selling Livestock
Call Dunlaps at (717) 397-5136

Slaughter Cattle
Every Monday 9:30 AM

Feeder Cattle
Sold in Conjunction with
Monday Receipts

Receiving Market Hogs
Wednesday
6:30 AM To 11:30 AM

Sheep & Goats Auction
Back By Popular Demand
call Jim Hunsicker

SPECIAL FEEDER CATTLE SALES

May 7 & 21
Sales Start At
12 Noon



Consignments welcome
Call Butch Brown
Glenn Hart
or Leon Hoover

Walter M. Dunlap and Sons
LANCASTER STOCKYARDS

An Old Line Commission Firm Dedicated to
Livestock Marketing for the 21st Century!

Corn - Beans - Cotton

New C-B-C

23% TOP DRESS #70353

23% Crude Protein
\$242.11 Ton Bulk

(1 Ton Min.)

*Price includes 4% Cash Discount Paid 10 Days.

PENNFIELD GRAIN BANK

Prices Week Of 4/26/99

Corn \$2.57 Bu.
Soybeans \$5.02 Bu.
Barley \$1.80 Bu.

- Use Grain "Same As Cash"
- Prices Updated Weekly
- Grain Back-Hauling
- No Storage Charges When Applied To Feed Purchases
- Yearly Statement of Grain Transactions Available

CUSTOMER SERVICE DEPT
OPEN 24 HOURS

1-800-995-0333
pennfield feeds



INDEX

Four Sections

DEPARTMENTS

Editorial A10
Farm Calendar..... A10
Futures A16
Mailbox Markets.....B19
Sale ReportsB25
Public Auction Register.....B28
Business News D 4

HOME AND YOUTH

Homestead NotesB 2
Home On The RangeB 6
Cook's Question CornerB 8
Kids Korner.....B10
Farm Women Societies.....B15
You Ask, You Answer.....B16
4-H HappeningsB17

DAIRY

Md. DHIA..... A26
Dairy Basics..... A27
DHIA Focus..... A33

COLUMNS

Now is the Time..... A10
PSU Dairy Science..... A25
Consuming Thoughts.....B 7
Family Living Focus.....B 9
On Being A Farm Wife.....B11
Ida's Notebook.....B17
Classified Ads.....C 2
Livestock Ledger D 3

FEATURES

Dairy Compact..... A 1
Earth Day A 1
Beef Ball, Parade A 1
Poultry Industry Celebrates. A 1
Grange Day A 1
Student Ag Day..... A21
Chester Conservation..... A41
Springtime BlossomsB 2
'Willow In The Wind'B 2
Bread RisesB12
Plants FantasticB18