

Specializing In Vans



96/97 Chevy G1500 Express
8 Passenger, V6/V8, AT/OD,
Dual A/C & Heat, Privacy
Glass, Tilt, Cruise, PW, PL,
CD, Hinge Doors 16-32k Mi.

1998 Ford E350 Super Club Wagon XLT, 15 Pass, 6.8 Triton V10, AT/OD, Dual A/C & Heat, Privacy Glass, Tilt, Cruise, PW, PL, 4 In Stock, 27-29K mi

1997 Ford E350 Super Club Wagon, 15 Pass, 7.3 Power Stroke Diesel, AT/OD, Dual A/C & Heat, Privacy Glass, Tilt, Cruise, PW, PL, P Seats, P Mirrors, Cassette, Alloys, White, 24K Miles #2937

1997 Ford E150 Club Wagon XLT, 8 Passenger, 5.4 Triton V8, AT/OD, Dual A/C & Heat, Privacy Glass, Tilt, Cruise, PW, PL, 36k Mi 2 In Stock

1997 Dodge B3500 Maxi Ram Wagon SLT, 15 Pass, 5.9 Magnum V8, AT OD, Dual A/C & Heat, Privacy Glass, PL, PW, PS, PB, Tilt, Cruise, Keyless Entry, 5,004 Mi. #2914

1995 Ford E150 Club Wagon Chateau 7 Passenger, 5.8 V8, AT/OD, Dual A/C & Heat, Privacy Glass, Tilt, Cruise, PW, PL, Quad Captains, Sofa Bed, P Seat, 56k Mi. #2962

1998 Ford E150 Super Econoline, 7.3 Power Stroke Diesel, AT/OD, A/C, Tilt, Cruise, Cassette, 13,000 Mi #2971

1996 Ford E150 Clubwagon XLT 8 Passenger, 351 Engine, AT/OD, Dual A/C & Heat, Privacy Glass, Tilt, Cruise, PW, PL, H D Towing Package, 55K Mi., #2852

1996 Ford E150 Clubwagon Chateau, 7 Pass, 5.8 V8, Auto OD, Dual A/C & Heat, Privacy Glass, PL, PW, PS, Tilt, Cruise, Keyless Entry, Alloy Wheels, Heavy Duty Towing Package, 27,741 Mi 30K 2 In Stock

1996 Ford E150 Clubwagon XLT, 8 Pass, EFI 4.9, AT OD, A/C, Dual Heat, Privacy Glass, PS, PB, PL, PW, Tilt, Cruise, 48,000 Mi #2913

1997 Ford E150 Clubwagon Chateau 7 Passenger, 5.4 Triton V8 Engine, AT/OD, Dual A/C & Heat, Privacy Glass, Tilt, Cruise, PW, PL, Towing Package, 19-32k Mi., 2 In Stock

1997 Ford E350 Econoline Cargo Van, 2 Bucket Seats, 5.4 Triton V8, AT OD, A/C, PS, PB, Inside Shelving, 45,062 Mi #2911

3/4 Four Way
Auto Sales

770 W Main New Holland, PA 17557
717-354-3199 • 717-355-0625 FAX
Toll Free 1-877-999-VANS (8267)



1989 Ford F-350, 7.3 Diesel, Auto, 150K Miles,
14' Refrigerated Box Carrier with Electric Standby
\$6,900 • 717/933-4860

AM GENERAL 6x6



In-Line 6-Cylinder Cummins, with Turbo 5
Speed with Hi/Low Transfer case 900/20
Tires, Air Brakes, Locking differentials Cargo
body A must for every farmer or off road
work Some with new engines and
transmissions

Priced from \$2,500 to \$12,500
All Road Ready EXCELLENT CONDITION
Call St. Marys, PA
(814) 834-1018



YORK MACK YORK GMC TRUCK

55 S FAYETTE ST
YORK, PA 17404-0833
(717) 792-2636
BRIAN SACKETT



1984 Auto Car 3406B Cat
300 HP Eng., Eaton 8LL Trans, 20,000# Front Axle,
46,000# Eaton Hendericks, Susp, Jake Brake
Jiffy Boom, 4,500# Lift Capacity



1977 Auto Car N.T.C. 230 HP, RTO-958LL Trans,
20,000# Front, 46,000# Rear Boom Side-O-Matic

24 HR
PARTS &
SERVICE
MON. - SAT.

Bergey's

AUTOMOTIVE EXCELLENCE SINCE 1924



TRUCK CENTER

SHOP OUR WEBSITE
bergeys.com

446 Harleysville Pk. (Rt. 113)

(215) 721-3400

Souderton-Franconia, PA.

CALL TOLL FREE

(877) 237-4393

SHOWROOM HRS
M-F 9am to 9pm
Sat 9am to 4pm
CLOSED SUNDAY

WORK READY! • 877-237-4393



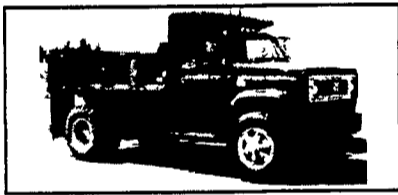
'99 GMC C3500 WITH DUMP
#60933, GMC C3500, 5.7L Vortec V8, Automatic, A/C,
11,000 lb GVW, Locking Differential, Hell Yardbird 10' x 6'8"
2 Yard Body, And Much More! **\$25,500**

PRICED TO SELL! • 877-237-4393



'99 GMC 3500HD CHASSIS WITH DUMP
#60677, GMC 3500HD 7.4L Vortec V8 5-Speed Manual,
15,000 lb GVW, Air Conditioning, Tamaqua 3-4 Yd Dump
Body And Much More! **\$26,900**

JUST TRADED IN! • 877-237-4393



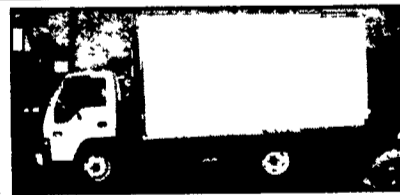
'85 CHEVY C70 DUMP TRUCK
Under 40,000 Original Miles, 35,000 GVW, 427 Gas Engine
5-Speed/with 2-Spd Rear Air Brakes 10 00X20 tires New
PA State Inspection **\$12,850**

A REAL STEAL! • 877-237-4393



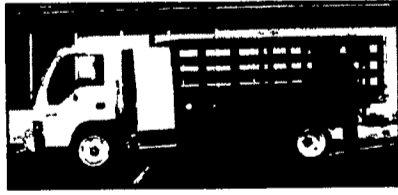
'99 GMC SAVANA HIGH CUBE
#60707, GMC Savana, 5.7L Vortec V8, Auto, A/C, 12,000 lb
GVW, 14' Grumman Olson Van Body with Roll-up Rear
Door Sliding Bulkhead Door, And More! **\$23,500**

PRICED TO SELL! • 877-237-4393



'98 GMC W4 FORWARD WITH VAN BODY
#60051, GMC W4 Forward, Diesel Engine, Automatic
14,250 lb GVW, Air Conditioning, St Cassette, Morgan
14 Van w/Roll-up Rear Door More! **\$28,900**

DUMP BODY! • 877-237-4393



'99 GMC W5500 W/B-PACK & STAKE DUMP
#60702 W5500 175hp Diesel, Auto A/C AM/FM Stereo
16,500 lb GVW, Reading Rev-Pac Tool Box 12 HD Stake
Body with Dump Hoist, And More! **\$38,500**

GIVE US A CALL! • 877-237-4393



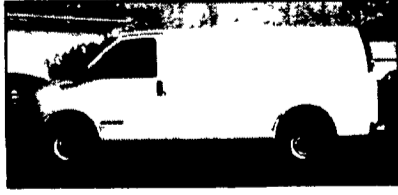
'99 GMC C3500HD CAB CHASSIS
#60857, GMC C3500HD, Vortec 7400 V8 Gas Engine,
Automatic, A/C, 15,000 lb GVW, 84" CA, White Paint
And Much More! **SAVE**

READY TO GO! • 877-237-4393



'99 GMC W4 FOWARD WITH BODY
#60696, GMC W4, 5.7 liter V8 Gas Engine, Automatic
A/C, 14,050 lb GVW, AM/FM St Cassette, Supreme
14' Aluminum Van Body, More! **\$26,900**

DIESEL ENGINE! • 877-237-4393



'99 GMC SAVANA CARGO VAN
#60593 GMC Savana Cargo Van 6.5 liter Turbo Diesel
Auto, A/C Side & Rear Door Windows, White Paint And
Much More! **HARD TO FIND! SAVE**

UNDER CDL! • 877-237-4393



'95 GMC TOPKICK WITH VAN BODY
#4744, 6.0 liter V8 Gas Engine A/C, 25,950 lb GVW,
Allison Automatic, 25' Van Body with Walk Ramp,
Excellent Condition And Much More! **\$17,500**

WELL MAINTAINED! • 877-237-4393



'93 WHITE GMC W164TES TRACTOR
#93con, W164TES, Cummins N14-410hp Fuller 13 Spd
Extended Sleeper, Jake Brake Air Susp, A/C, 11R22.5 Tires
304k Service Records Available! **\$33,900**

NEW PA INSPECTION! • 877-237-4393



'80 CHEVY C70 DUMP TRUCK
#4802 1980 Chevy C70 Dump 366 C1 Gas V8
5 Speed with 2-Speed Rear Axle 27,500 lb GVW
New PA Inspection! **AS IS TRUCK! \$5,900**



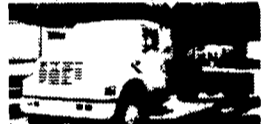
1994 IH 4700 DT408
7 Spd, 25,950 GVW (No
CDL) 22 Ft Van L/G,
Very Clean



1994 IH 4900
DT 466 6 Spd 33,000
GVW A/C, A/B with or
W/O 20 Ft Van L/G
140,000 Miles, Ex Cond



1993 IH 4900
DT 466 6 Spd, 33,000
GVW, A/C A/B With or
W/O 24 Ft Flat Bed L/G
150,000 Miles - Clean



1992 IH 4900
DT 466 6 Spd, 33,000
GVW 168" C to A/B Air
Ride Seat \$18,500



1998 IH
DT 466 6 Spd, 33,000
GVW 150" C to A - Clean
\$13,500



1994 GMC W4
Turbo Diesel A/C-Auto
14,250 GVW
12 & 16 Vans



1980 IHC DT466
10 Spd 33,000 GVW, 16
Ft Reefer Diesel Motor -
Electric Standby, Very
Good Cond



1987 F-700 FORD 370
5+2 Spd 24,000 GVW
(No CDL) 18 Ft Van
85,000 Miles **\$8,900**



1993 GMC W4
Turbo Diesel Auto, 13,250
GVW 12 Ft Reefer
Thermo King CB20 Max
Electric Standby **\$13,900**



1980 LN9000 FORD
3208 Cat
10 Spd 46,000 GVW 2500
Gal S/S Tank with Diesel
Motor High Pressure
Washer, Ex Cond



1993 GMC W4
Turbo Diesel, Auto 14,250
GVW, 12 Ft Dump Body
Ex Cond



16 FT. AND 18 FT.
REEFER
Bodies, Electric Cold Plate
Unit, Rear and Side Door

MARTIN'S USED TRUCKS & EQUIPMENT INC.

560 Lampeter Rd, Lancaster, Pa. 17602
Robert Martin (717) 299-6200 • (717) 392-6266

WE SERVICE WHAT WE SELL