

**Why buy new when you can have slightly used?**  
**98 Mack CH 613**  
**Tractor/Glider, 350 Mack, 10-spd.,**  
**46,000 rear air, 87,000 Miles**  
**\$62,000 OBO**  
**973/347-1101 ask for Jim**

Several 24' Fruehauf aluminum tub-dump trailers, very good shape, \$6500/ea. 814-629-5675 M-F, 8-4 only

**TRAILERS:** Car Mate cargo, landscape gooseneck, car haulers, dump, snowmobile, car dollies. Also parts & service. **FINK'S TRAILER SALES**, RD3, 441 Pine RD. (off RT61 & I-78) Hamburg, PA 610-562-4627

**WANTED:** 48' Landoll or similar type tilt trailer. 717-534-1253

**WANTED:** Used Deck-Over Trailer. (610)793-3483.

Wetline for Sale PTO & Assembly, Pump & 70/Gal Tank, w/60 Gal Fluid; Stoltzfus Lime/Litter Spreader, Used 3Yrs. Excellent Condition. (717)597-3614.

Used 14' steel Snyder dump body, good condition w/rolled tarp, \$1,500. Call between 8am-4pm, (410)778-2372.

V6 53 Detroit engine, runs good \$700 OBO 717-530-0128.

**WANTED:** 3208 Cat core or take-out complete, natural or turbo. Evenings 6-9 814/842-3821 or leave message.

**FOR SALE**



**1996 International 4700 L.P. Truck** with DT 466E Engine w/Cruise Control, 2 Air Ride Seats, Power Windows with 20 Ft. Aluminum Roll Back Bed w/Removable Side Panels, Bed Air Ride Suspension, Rest Rite Sleeper; Rear Car Carrier's Lift, Two 50 Gal. Fuel Tanks, 4 Ft. Alum. Side Mount Tool Box  
**Call 717-626-1151**

**QUALITY USED TRUCKS**



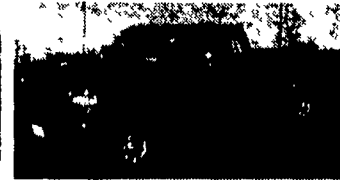
**96 FORD F250 SUPER CAB** 4x4, Power Stroke Diesel, AT and More



**98 FORD E350 CLUB WAGON** 15-Passenger, V10, AT, PW, PL, A/C, Like New #PF3963



**NEW 98 FORD E150 CONVERSION VAN, Halfback - Half Luxury Half Utility - List Price \$32,620 BLOWOUT PRICE \$23,106**



**97 FORD F250 SUPER CAB 4X4** 7.3 Power Stroke Diesel, XLT, Only 5,000 Miles (Like New) #PF3910



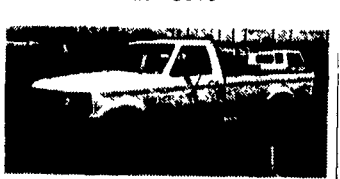
**97 FORD F250 SUPER CAB 4x4** 7.3 Power Stroke Diesel, AT, One Owner (Nice Truck) #P3922



**97 FORD F250 SUPER CAB 4X4 XLT, 460 V8, White #2346L**

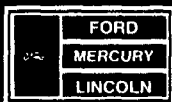


**HEAVY DUTIES IN STOCK** (2) 99 F350 CC 4x4s (2) 99 F250 SC 4x4 All Diesel AT A/C



**93 FORD F350 460 V8, AT, PW, PL, Great Find #2344B**

*Unless the Chapman Emblem is on Your Car or Truck... You Probably Paid Too Much!*



**CHAPMAN LEBANON**

20th & CUMBERLAND STS. - RT. 422 WEST  
 9-9 DAILY: 9-5 SATURDAY • CHAPMAN HOTLINE (717) 272-7671



A Division of THE CHAPMAN AUTO GROUP  
 PARTS BEST OPEN DAILY 9-5 SAT 9-5

**KEIM**  
 YOUR CHEVY GEO FAMILY

(717) 768-8225  
 (800) 223-KEIM

RT. 30 Lincoln Highway East  
 Paradise, PA 17562

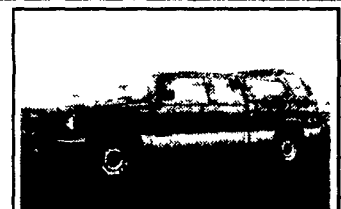
**YOUR TRUCK, VAN & 4x4 HEADQUARTERS**  
**1-800-223-KEIM**



**92 CHEVY G30** Cargo Van, 350 V8, AT, A/C \$5,900



**95 CHEVY G20 CARGO VAN** White, V8, AT, A/C, 20,000 Mi



**94 CHEVY 3/4 TON 4X4** Extend Cab, 350 V8, AT, A/C, Long Bed



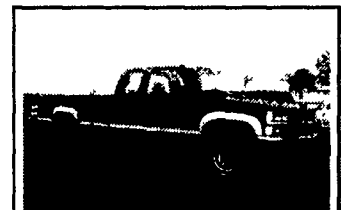
**94 CHEVY SUBURBAN** K1500 Silverado, Teal/Silver, V8, AT, Dual A/C, Only 47,000 Mi.



**88 GMC 16' BOX** 28,000 GVW, 366 V8, 5 Spd, 2 Sp Rear, Only 55,000 Mi



**98 CHEVY EXPRESS** 15 Pass Van, White, V8, AT, A/C, 17,000 Mi



**97 CHEVY 3/4 TON 4X4** Extend Cab, 454 V8, AT, A/C, PW, PL, 27k Mi



**96 CHEVY ASTRO CARGO VAN** V6, AT, A/C, Tilt, Cruise, 40k Mi.

**Brubaker's Auto Sales**  
 Myerstown, PA  
 717-866-5267

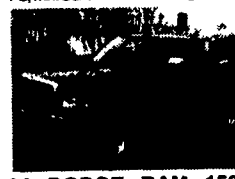
**BOWERS USED CARS INC.**  
 Route 30 West of Abbottstown, PA  
 7015 York Rd. 717-624-7072



**74 INTERNATIONAL 1 TON DUMP TRUCK** V-8, 4 Speed, PS, PB, Mint Cond \$3,995



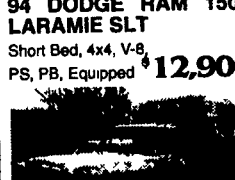
**88 CHEVY C-30 UTILITY TRUCK** V-8, Auto, PS, PB \$5,500



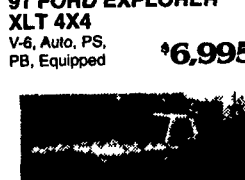
**94 DODGE RAM 1500 LARAMIE SLT** Short Bed, 4x4, V-8, PS, PB, Equipped \$12,900



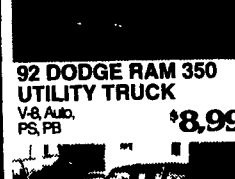
**91 FORD EXPLORER XLT 4X4** V-6, Auto, PS, PB, Equipped \$6,995



**92 DODGE RAM 350 UTILITY TRUCK** V-8, Auto, PS, PB \$8,995



**87 FORD F250 BUCKET TRUCK** 300-6 cyl 4 Speed, PS, PB, Mint Cond \$9,995



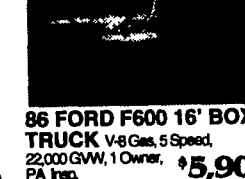
**87 FORD RANGER XLT EXT CAB** 4x4, V-6, Auto, PS, PB \$3,795



**86 FORD F600 16' BOX TRUCK** V-8 Gas, 5 Speed, 22,000 GVW, 1 Owner, PA Imp. \$5,900

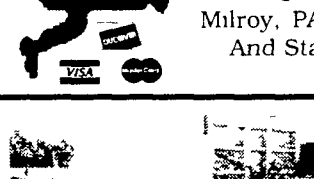


**97 FORD EXPEDITION XLT 4X4** V-8, Auto, PS, PB, "Equipped" \$21,900

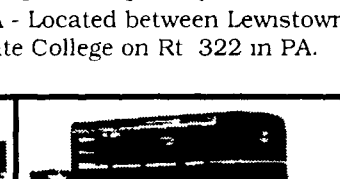


**98 DODGE DAKOTA SLT 4X4 EXT CAB** V-8, Auto, PS, PB, AC, 17,000 Miles \$19,700

**HOSTETLER Truck Bodies & Trailers**  
**717-667-3921**  
 Milroy, PA - Located between Lewistown And State College on Rt 322 in PA.



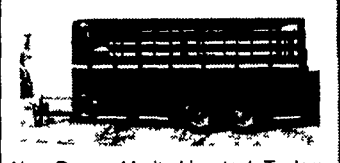
**Aluminum Grain Bodies,** Choice of Length, Side Height & Rears, 16' In Stock with 48" Sides and Double Acting Tailgate Call for More Details



**Corn Pro Slant Load Horse Combo Trailers,** 7' High, Dressing Room, Saddle Racks, 2 Horse In Stock \$3,770

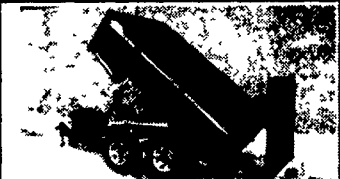


**Corn Pro Bumper Pull Livestock Trailer,** Corn Pro, Rubber Torsion Axles, Treated Pine Floor \$3,495  
 6 x 16 3500# Axles \$3,725  
 6 8 Wide x 16 Long 3500# Axles \$3,725  
 6 8 Wide x 16 Long 6000# Axles \$4,045



**New Design Moritz Livestock Trailers** Semi Round Front, New Sides and Rear \$3,495  
 6 x 16' 7000# GVW \$3,795  
 6 8 x 16 Long 7000# GVW \$3,795

**Financing & Leasing Available**



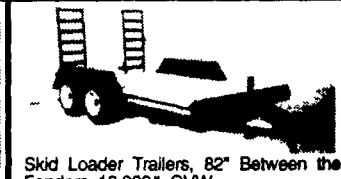
**Moritz New Dump Trailer,** Standard and Low Profile Design, Ramp Gates or Double Doors, 7000# & 10,000# Available, In Stock



**Eby Trailers** In Stock, Both Gooseneck & Bumper Pull **Last week for \$6.95% Financing or \$150 Rebate**



**Hydraulic Tilt Deck Trailer** 19' 10,000 GVW \$3,895  
 19' 12,000 GVW \$3,895



**Skid Loader Trailers,** 82" Between the Fenders, 10,000# GVW 14' Long \$2,545  
 16' Long \$2,600  
 18' Long \$2,615

**Used Livestock & Utility Trailers In Stock**