

1977 Mack R-Model
5 Spd., 300 Motor, 1995 Vacuum Tank, 3,300 Gal - AC4 Vacuum Pump, Excell Cond
\$32,500 - 610/826-4381



'85 Mack Vacuum Truck
E9 500-20,000 front - 58000 rears, new paint/parts, etc...set up for injection, top spreading Price neg with or without all accessories Call for details. **MUST SELL!**
717/464-0841

'88 Chevy Suburban Silverado, 350 fuel injection, auto, 1-owner, 2-AC's, 2WD, tow package, transmission cooler, electric brakes, good condition, \$5000 610-692-2849

'89 Dodge LE 350 dual whl. pickup, 10,000 GVW w/8' dump insert, 360, 4 spd, PS, PB, air, 65,000 miles, new radials, excellent condition, \$9,950. 717-733-2873

'89 Ford F-150, 4x4, little rough but runs, solid motor, would make good farm truck (717)573-2010 eves, (717)360-5914, leave message.

TRUCKERS
27' RATCHETS.....\$15.95
WINCH STRAPS...\$12.95
RUBBER T. STRAPS...54¢
COMPLETE ROLL TARP SYSTEMS
TIRONIE TARPS
(800) 874-2928 • FAX: (570) 584-3127



'89 Ravens 38' Frameless Air Ride, 8 Aluminum Budd Wheels, Roll Tarp, Two Way Gate, Very Good Condition.
\$19,900 or an offer
570-648-7994

THE HONDRU EXPERIENCE

OVER 200 TRUCKS AVAILABLE FROM OUR 4 DEALERSHIPS

E-TOWN CHEVROLET

Oldsmobile Pontiac
Route 230 E-Town • 717-361-7776

1999 Chevy 1500 Silverado 4x4
STK. #9H057
MGRP \$22,750

From \$20,995 or \$294/month

36 Month Lease, \$3,163 Case/Trade Due At Lease Signing, Includes Security Deposit, Tax, Title & Lease

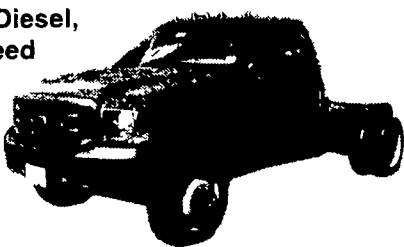


14 Silverados In Stock

PHILLIPS FORD

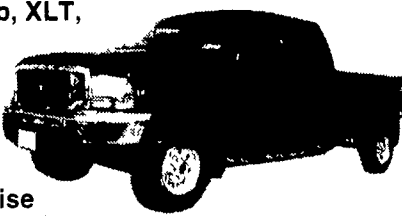
Route 72 Manheim • 717-665-3551
1999 FORD F550

Cab & Chassis
4x4, Diesel,
5 Speed



E-TOWN DODGE

Route 230 E-Town • 717-367-6644
1999 FORD F250 SUPERDUTY
Super Cab, XLT,
4x4,
Diesel,
Auto,
PS, PB,
PW & L,
Tilt & Cruise
\$34,995



MANHEIM CHRYSLER PLYMOUTH GMC

Route 72 Manheim • 717-665-2473
1998 GMC 3500 SIERRA

4x4, 8 1/2' Dump on/V-Plow & Trial Gate
Spreader,
V-8, 5 Speed,
12,000 GVW,
Full Central Hydraulic



All prices include Rebates, Exclude Tax, Tag and \$40 Dock Fee

LOADS OF USED PICKUPS CALL ANY STORE FOR DETAILS

Email - hondruauto@aol.com

OVER 20 CHASSIS IMMEDIATELY AVAILABLE FOR BODY INSTALLATION AT OUR LOCAL BODY COMPANIES!

LEFEVER BROS. CHEVROLET GEO.

YOUR DIRECT LINE TO GENUINE GM PARTS

(800) 533-3837

When you call the number listed above, you'll reach our wholesale parts specialists, who can help you keep your GM repair work moving quickly.

Ask about

- Specializing in GM Medium Duty Trucks, Current and Obsolete.
- \$500,000 Parts Inventory.
- Parts Locator for Those Hard to Find Items.
- We Ship Anywhere, Local Delivery Available.
- Experienced, Knowledgeable Personnel.

Mon Tues Thurs Fri
7:30 a.m. - 4:30 p.m.
Weds 7:30 a.m. - 8:30 p.m.

(717) 432-9697

Major Credit Cards Accepted

Quality Dealer Since 1921
406 U.S. Rt 15 Dillsburg PA 17019



We want your business.



40' Screen side trailer w/ Hawk self-contained loader for horse manure or hay, \$6500 610/932-5576

(2) 48' trailers 3-car carrier, 5th wheel, single axle, air-ride, electric winch, \$3800/each Evenings 814/942-3821

(6) 26' aluminum Dorsey dump trailers, Fruehoff tanker trailer, 7200 gal. cap (good for water tanker) 570/286-6743

'70 IH 1600, 13' stake body, dump, inspected, \$1800 610-326-8909

'73 Paystar 5000, tandem dump, aluminum body, good condition \$12,000 (410)879-7717

75 Diamond Reo dump truck, many new parts, 74 Road Boss tractor & trailer log truck. Prices neg. 717/423-6802.

'78 White Tandem Axle Container Roll-Off Truck Dempster Hook-Up. Rebuilt Engine, P/S Air-Brakes, Asking \$10,000 (609)697-2004.

'85 IH 9670, 89" air ride cab, 212"WB, Spicer clutch, 400 Cummins recon, 212,000 miles, 10-speed, spring ride, well maintained truck, \$5000 OBO 610-775-7113

'87 Bronco II, 4x4, 5 speed, NEW paint, injectors, muffler, brakes, & tires. An extra set of wheels \$3,000 OBO After 7pm, (610)838-8492.

EBY USED EQUIPMENT LIVESTOCK BODIES

- 12'x92"x6'4" Eby
- 15'X92X6'6" Eby
- 9'x82"x6" Eby
- 14'x96"x6'3" Eby
- 9'x94"x6'9" Eby w/Deck Rail
- 10'x96x6'6" Eby

GOOSENECK

- 1991 Eby Wrangler 18'x7 1/2'x6'9"
- 1996 Eby 20'x8'x7'6" w/Deck Rail
- 1995 Eby Maverick 16'x7'x6'6"
- 1988 Eby Ruffneck 26'x8'x7"
- 1997 Eby Ruffneck 24'x8'x6'9"

M.H. EBY, INC.

1194 Main St. (Route 23)
Blue Ball, PA 17506
(717) 354-4971
(800) 292-4752

4435 State Route 29
West Jefferson, OH 43162
(614) 879-6901
(800) 752-0507

IN ALUMINUM BODIES EBY BUILDS IT

M H Eby custom-builds aluminum truck bodies for the agri-transportation market Nobody offers more sizes and options in

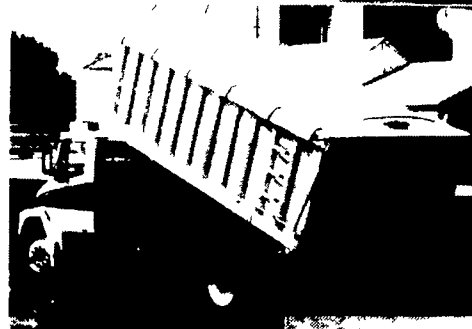
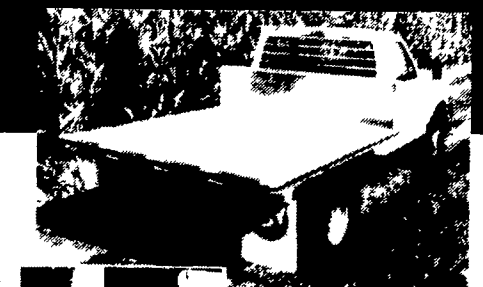
- FLATBED BODIES - Lengths to 32', choice of 5 widths
- GRAIN BODIES - Lengths to 24', landscape and general purpose dumps to 12'
- LANDSCAPE BODIES - Lengths to 12', We'll build to your specs!

For greater payload capacity, Eby's aluminum design is equal in strength to steel and up to 40% lighter! Our corrosion-resistant components never need painting That means minimum maintenance, improved appearance and higher resale value

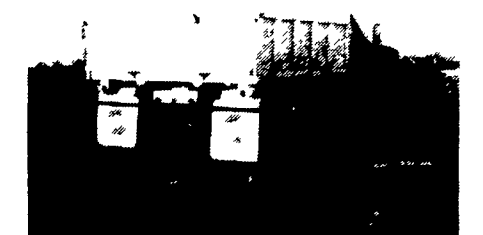
Eby products have superior standard features And we offer customer options for virtually any application Agriculture is your business - building bodies to haul it is ours.



1194 Main Street
Blue Ball, PA 17506



Let EBY custom build one for you.



800-292-4752