

# !!UNBEATABLE PRICES!!

## SUPER TOUGH STEEL BUILDINGS



**SAVE  
UP TO  
60%**

- Equipment storage
- Workshops
- Hay and animal shelter



Available models  
 25 x 32 (2 left) 45 x 90 (1 left)  
 30 x 44 (3 left) 50 x 100 (2 left)  
 40 x 62 (4 left) 55 x 150 (2 left)  
 call for other sizes

Factory Direct **800/825-5059**

**Industrial Paint Liquidation**  
 Just received thousands of gallons of highest quality industrial grade paint from military base closing and cancelled government contracts. These paints were designed for extreme duty in military service making them far exceed typical application in commercial or farm use. Buy now while available-most can be stored for several years.  
*You can't buy better paint!*  
 Epoxy - \$14/gal.  
 Polyurethane - \$12/gal  
 Alkyd Enamel - \$10/gal  
 Specialty Coatings \$10-\$14/gal  
 \$40 to \$60 value.  
 Call for color availability. 10 gallon min. purchase.  
 2 locations - Honey Brook and Bridgeport, PA  
 Heritage Equipment, Inc  
 610-286-1655

**\$ WHOLESALE \$**

**1/2" to 8" PIPE 1/2" to 8"**  
 Prime, secondary, structure pipe  
 Farmers, Manufacturers, Fabrication  
 — Will Cut To Your Size Needs —

**STEEL TUBING**  
 1 1/2" Sq    3 1/2" Sq    2"x2" Sq    2"x4" Rect  
 2 1/2" Sq    4"x4" Sq    3"x3" Sq    3"x2" Rect  
 20' to 24' Lengths/1/8" to 1/2" Thick

**BRICKER'S PIPE YARD**  
 1970 Frank Road  
 Chambersburg, PA 17201  
**717-261-0095**

# Rural Economy

**Cost-efficient Centurydrain® roofing and siding is on some of the best looking buildings in the country.**

Build with Centurydrain roofing and siding and you've built a money-wise structure. Full-hard, high tensile galvanized steel, and an exclusive drain channel for a dry interior give you a building that'll handle years of hard duty and hard weather. Good looking, too. Crisp lines and plenty of bright, long-lasting colors make Wheeling Centurydrain as handsome as it is economical.

★ ★ Manufacturing Custom Trim ★ ★

**MARTIN'S ROOFING**      258 Walnut Bottom Rd.  
 (717) 532-3460      Shippensburg, PA 17257  
    Rt. 81, Exit 10

**PPB**

**Pioneer Pole Buildings, Inc.**  
 Pottsville, PA  
**Toll Free 1-888-448-2505**

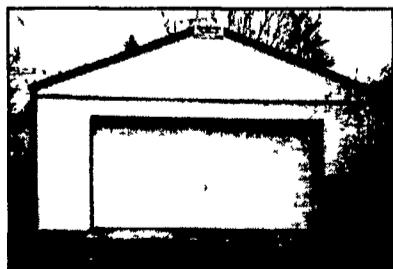
**SPRING SPECIAL**  
**30x40x10      \$7,700.00**

- ★Included is (1) 10x10 sliding door & 1 entry door
- ★25 Year warranty steel roofing and siding
- ★Free blueprints
- ★Call for free literature

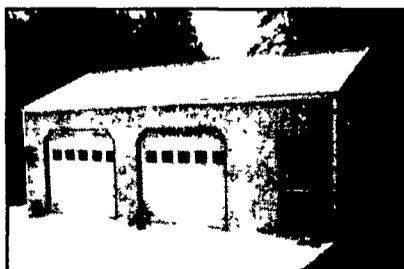
Member Pa Builders Association  
 Member National Frame Builders Association

# — SPRING SAVINGS! —

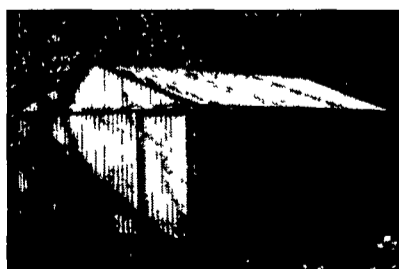
## \*Spring Post-Frame Special Values\*



**20x24x8      \$4,700**  
 -(1) 3'x6'8" steel entry door  
 -(1) 16'x7' insulated raised panel overhead door



**30x40x10      \$9,000**  
 -(1) 3'x6'8" steel entry door  
 -(2) 9'x8' insulated raised panel overhead doors



**32x56x12      \$11,800**  
 -(1) 3'x6'8" steel entry door  
 -(2) 16'x12' split sliding doors



**42x96x14      \$23,500**  
 -(1) 3'x6'8" steel entry door  
 -(2) 20'x14' split sliding doors

These special prices include taxes, delivery, labor for construction, and your choice of color on sides, roof, and trim! We custom-build to meet your specifications. Conestoga offers company crews, **FREE estimates and brochures**, with financing available. Call us today- (717) 354-2613 or 1-800-544-9464.



**CONESTOGA Buildings**

202 Orlan Road, New Holland, PA 17557  
**1-800-544-9464**