

Check With Binkley & Hurst Bros. Inc. For Fine Pre-Owned Machines and Trailers

Must Go! Deduct \$1,500.
Articulated Loader, Approx.
100 HP



UT 4186 - Fiat Allis Rear Cab Mount
Articulated Loader, 10 Ton, 2-1/2 Yd
Bucket, Cab & Heater - **Priced to Sell!**
Was \$17,500 **NOW \$16,000**
Ask About Good Financing!

Deduct \$1,000



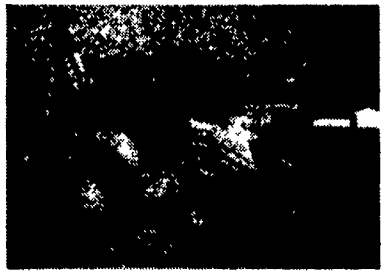
UT 4196
Cat Long Track Model 205 LC with Cab,
25-1/2' Long Reach Banana Boom, 14
Ton Weight Class (Can Be Transported
on 20-Ton Tag-along Trailer) with 36"
Trenching Bucket Was ~~\$40,000~~
**NOW ONLY \$18,900 - Ask About Good
Financing Rates & Terms**

**No Longer Needed In Our
Yard Fleet! Save \$4,200**
Very Clean Tight Case 586 4x4
6000 Forklift, 21' Mast



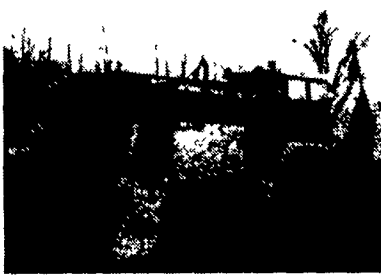
UT 4198
Ready to Work, with Side Shift, Good
Rubber, 19 5Lx24 Drive Tires, 95% New
~~\$26,000-000 - DEDUCT \$4,200~~
BUY NOW FOR \$22,700
Ask About Financing!

Save Over \$2,000
Almost New Ford 655E Backhoe



UT 4175
Only 511 Hours, 4 Wheel Drive Cab,
1996 Model, Extendahoe, 18'5" Reach,
89 HP, New Holland BSD450T Diesel
Super Deal! \$54,000
BUY NOW FOR ONLY \$49,800

Big Savings - Price Reduced
John Deere 310 C 4x4 Cab
Tractor Loader Backhoe



UT 4197
With 4 in 1 Loader Bucket, Very Tight
Hoe, Power Shuttle, Ready to Work
~~\$23,900-000 - DEDUCT \$3,000~~
YOUR COST ONLY \$20,800

Pre-Owned Trailers For Sale
Check Out These (2)



30 Foot Drop Deck Fifth Wheel Trailer
with Tilt Top Lower Deck, Little Beaver
30,000 GVW with 8.25x15 Tires, Good
Air Brakes - **\$7,200**

UM 4105 - 1993 35 Ton Detachable
Eager Beaver Model 3SGHS4, 4 New
Tires, Good Brakes - **\$10,800**

1986 John Deere 555B
Crawler Loader with Backhoe



With Model 9300 Backhoe, 1-1/4 Yd
Bucket, 78 HP Turbo Diesel, 3 Speed
Power Shift, 75% Good U.C., Peddle
Steer, Approx. 10 Ton Machine.

Case 580C Cab Backhoe



1979 with Cab and Heater, Power
Shuttle Reverser, Hoe Reach Approx
14'6" Dig Depth, Approx 6 Ton Machine
with 24" Bucket
\$12,800

Nice Tight Straight Original Machine
with Good Rubber

1994 Case 590 Turbo Diesel
4 Wheel Drive Tractor
Extendahoe Backhoe



Approx 86 HP with Nice Upholstered
Cab and Cloth Seat, Extendahoe Reach
Approx 19'6"
SALE PRICE \$34,600

Case 850B Crawler Loader
Farmer Grade Machine



With 4-in-1 Clam Bucket with ROPS,
Rear Brush Screen and Brush Sweeps
Over Hood and Muffler, Approx. 9 Ton
Machine, Rated 75 HP, Powered By
Case 336 Diesel Engine, 2 Speed Track
Steering, 1979 Model, Good Power &
Drive Line - ~~\$48,600~~
NOW \$17,500

TRAILER & WHEEL ACCESSORIES
1) UM 3901 - 3 Axle 18,000 GVW
Hudson Tagalong with Pintal Hitch, 24"
Deck Height, Beaver Tail, PA Inspected -
Only **\$1,750.**

2) UM 3520 - 315 - 70R22 5 Bandag
Recapped Tires with Waste Hauler Lug
Tread Mounted on Dayton Wheels,
Great for Truck that Runs in the Field Off
Road, Set of 4 - **\$1,275**



176 KW Generator
8V92, Detroit diesel, excellent condition
\$15,000 (570)966-3718

1984 Case 450C Crawler Dozer, 6 way good u/c, 4675 hrs , #5803	\$24,000
1992 Skytrac 6036 Forklift, 4WD, 6000# 36' boom, #6193	\$34,900
Cat 416 Loader Backhoe, 2WD, Cab, Ex , #6181	\$21,500
1976 Case 580C Loader Backhoe, 2WD, Can, Std , #6133.	\$10,900
1984 Case 580E Loader Backhoe, 4WD, Can, Ex , 5000 hrs , #6028	\$18,900
1987 Case 580K Loader Backhoe, 2WD, Cab, Ex , 7045 hrs , #6172 .	\$19,900
1987 Case 580K Loader Backhoe, 4WD, Cab, Ex , #6118	\$21,500
1988 Case 580K Loader Backhoe, 4WD, Cab, Ex , #5888	\$21,500
1989 Case 580K Loader Backhoe, 2WD, Cab, Ex , 5650 hrs , #6074	\$23,500
1996 Case 580L Loader Backhoe, 4WD, Cab, Ex , 1200 hrs , #6194	\$41,500
1994 Case 580SK Loader Backhoe, 4WD, Cab, Ex , 3020 hrs , #6176	\$35,000
1996 Case 580SL Loader Backhoe, 4WD, Cab, Ex , 1800 hrs , #6212..	\$41,900
1987 CDS 715D Loader Backhoe, 2WD, Cab, Std., 6000 hrs., #6209	\$14,900
1989 Bobcat 743 Uniloader, Aux Hyd , Drt. Bkt , Forks, 1900 hrs , #6204	\$10,500
1994 Case 1840 Uniloader, Aux Hyd , Drt. Bkt., 3000 hrs #6205	\$11,500
1995 Case 1840 Uniloader, Aux Hyd., Drt. Bkt , 850 hrs., #6211	\$15,900
1989 Case 1845C Uniloader, Aux. Hyds , Ut. Bkt , #5182.....	\$12,500
1990 Case 1845C Uniloader, Hi Flow Hyds., Planer, 1600 hrs., #5675.....	\$16,500
1983 Case W18B Wheel Loader, 4WD, GP Bkt., #6191.....	\$16,500

Vernon E. Stup Co.

5859 Urbana Pike, Frederick, MD 21701

301-663-3185

STONEY CREEK

CONTRACTOR SERVICES

EQUIPMENT RENTALS

Rent For Less!



Crawler Dozers • Crawler Loaders
Backhoes • Ram Hammers • Excavators
Vibratory Compactors • Telescope Forklifts

Samuel S. Shirk Michael D. Shirk

RD 2 BOX 2021-B
FLEETWOOD, PA 19522

(610) 944-5332
FAX (610) 944-6673

FORKLIFTS

2,000 TO 15,000 LB.

\$2,000 & upwards

GAS/LP-DIESEL-ELECTRIC

Cushion-Pneumatic-Rough Terrain
New Komatsu Forklifts Available

PA INDUSTRIAL EQUIPMENT

(610) 369-9778

**FOR NEW AND USED
CONSTRUCTION
EQUIPMENT PARTS
AND ATTACHMENTS**

CALL

H.E.L.P., INC.

(717) 469-0039

1-800-446-0505

Specializing In Caterpillar
Parts also available for Case,
John Deere, IHC, Fiat, Etc.

**HEAVY EQUIPMENT
LOADER PARTS, INC.**

10070 Allentown Blvd.
Grantville, PA 17028

JERRE MARTIN REPAIR

391 N. Farmersville Rd., Ephrata, PA 17522
(Just minutes off RT 222)

(717) 859-3283

Sales
Service

Rentals
Repairs



JD 644B Choice of 2

\$26,000



'85 JD 655 Cab

All
Machines
Listed For
Sale Are
Also For
Rent

Financing
Available



'89 JD 550G Crawler
w/6 Way Blade

\$49,000



'94 CAT CS563 Roller Drum
Drive

No Reasonable Offer Refused
Custom Repairs On All Makes Industrial & Farm Equipment

WE ARE BUYERS FOR LATE MODEL CONSTRUCTION EQUIPMENT NEEDING REPAIRS

Cat D3 w/6-way blade, rebuilt motor.....	\$14,500	JD 555B crawler loader, excel. cond.....	\$24,500
Cat E110B excavator.....	\$28,000	JD 644C wheel loader, good cond.....	\$33,000
Cat 936 wheel loader.....	\$39,000	'87 JD 750B LGP dozer, straight w/tilt, ex. cond.....	\$37,000
Cat 941B crawler loader, new U/C rebuilt motor, new paint.....	\$17,500	JD 755 crawler loader, OROPS, good cond.....	\$23,000
Cat 951C crawler loader.....	\$18,500	'91 Hitachi EX100 excavator.....	\$23,000
'93 Cat 953B crawler loader, new U/C.....	\$92,000	'83 Michigan 55C Wheel Loader, rebuilt motor, good cond.....	\$16,500
'81 Cat 953 crawler loader, OROPS, new U/C.....	\$39,500	'86 Ford F8000, w/rebuilt 3208 Cat diesel, dump body, snow plow, 5+2 trans., air brakes, 33,000 GVW.....	\$13,500
Cat 955K crawler loader, 4N1 bucket, rebuilt motor, new paint.....	\$17,000	JLG 40' man lift.....	\$10,500
Cat 955L crawler loader, OROPS, good cond.....	\$23,000	'97 Premier, 6x10 Trailer, w/ramps.....	\$780
JD 350C crawler loader.....	\$11,000		
'91 JD 410D 4x4, EROPS, standard hoe.....	\$29,500		

BINKLEY & HURST BROS., INC.

133 Rothsville Station Rd.
P.O. Box 0395, Litz, PA 17543-0395
Located 1/2 Mile North of Rothsville

(717) 626-4705

www.binkleyhurst.com

1-800-414-4705

Fax 717-626-0996

© 1999 CASE CORPORATION
Visit us on the Internet at <http://www.casecorp.com>
Case IH is a registered trademark of Case Corporation

CASE IH