

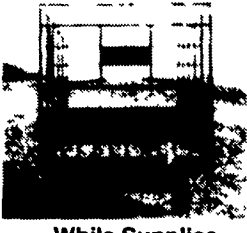
DUTCH BROTHERS

BALE WAGONS

See Our Other Ad For Your Combine Header Transport Equipment



Unique Rear Unloading



While Supplies Last!!

- 18'x8' inside
- 14 ga square tubing, for extra strength and long life
- Front and rear openings need only 38" clearance
- End gates made of extra heavy expanded metal, and spring loaded latches
- Beds built of all oak
- 3"x8" main beams
- 2"x5" cross member
- Nailed with galvanized nails
- Bolted with plated bolts
- Fabricated side rail for extra strength
- 8 ton gear
- 11L tires & tubes
- Extension tongue
- Built to last

New Chain Release Side Opening

Extra Wide Running Gears

Dutch Brothers
(717) 776-7465 or
(717) 776-3363

CALL NOW FOR YOUR SPRING NEEDS



Extendable Pump from 8'-12'

DRY HILL

FARM SHOP
554 N. Cross Roads
Lykens, PA 17048-9744
(717) 365-3109
Call 8:00-8:30 a.m.

DH400 Lagoon Pump. 32 or 42 ft.

Rovendale Ag & Barn Equipment
Watsonstown, PA (717) 742-4226

McMillen Bros.

Loysville, PA (717) 789-3961

CALL NOW FOR YOUR SPRING NEEDS

CALL NOW FOR YOUR SPRING NEEDS

- Dry Hill 32' Lagoon Pump.....CALL
- 98 Dry Hill 32' Multi Purpose Lagoon Pump.....~~SOLD~~ \$8,500
- 99 Dry Hill 12', 2 pt. Manure Pump.....CALL

D. S. SPREADER
Best On Market



- 750-1500 Gallon
- Tank 10 ga. Corten Steel
- Bulge Ends
- Option: rear or front spinner, sight gauge, auger
- Special orders accepted

CALL NOW FOR YOUR SPRING NEEDS

NEW EQUIPMENT

- Deutz Allis 6240 Tractor w/Loader, 110 Hrs.
- Deutz ~~SOLD~~ Tractor
- Agco 5670 Tractor
- Agco 5680 Tractor
- Agco Allis 9630 Tractor, 4WD Demo

USED EQUIPMENT

- Model 315 NH Baler w/Thrower
- 2500 AC Disk Harrow 12'
- 2258 NH Rake
- Little Giant Cultivator 32'
- Brillion Packer 12'
- A.C. B Gas, Tractor
- A.C. 6140 Diesel, Tractor
- A.C. 160 Diesel Tractor w/loader
- A.C. D-17 Gas, Tractor Narrow Front
- A.C. 170 Gas Tractor Narrow Front
- A.C. 180 Diesel Tractor
- A.C. 180 Gas Tractor
- (2) A.C. 190 Diesel Tractor
- A.C. 7040 Diesel Tractor
- 806 I.H. Diesel Tractor
- Model 258 N.H. Rake
- Little Giant Elevator 32 Ft. w/Motor
- Brillion Packer 12 Ft.
- A.C. 3 Bottom Plow Snap Coupler
- MF 5650 Combine w/Grain & Corn Heads. 300 hrs.
- Gleaner F, good cond.
- Gleaner ~~SOLD~~ With Grain and Corn Head. Perfect Shape

GRUMELLI'S FARM SERVICE INC.

929 ROBERT FULTON HWY.
QUARRYVILLE, PA 17566

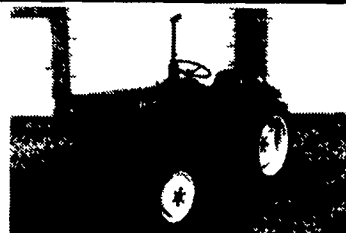
717-786-7318

GLEANER

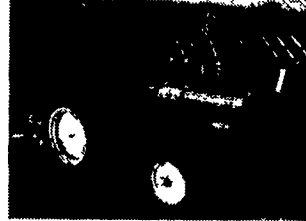


1.5 Mile South Of Quarryville On 222
See Salesmen: Tony Grumelli, Don Fichtner

USED COMPACT TRACTORS



Kubota L1501DT, 20 hp, 4WD



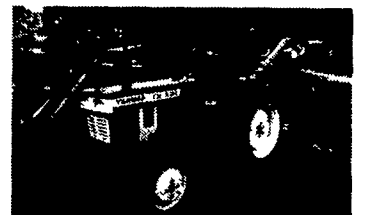
Hinomoto E184
23 HP, 4WD, from \$3,900

OVER 200 TRACTORS IN STOCK

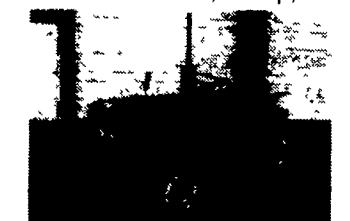
HINOMOTO
Mfg. of MF Compact Tractors

YANMAR
Mfg. of JD Compact Tractors

SHIBAURA
Mfg. of Ford Compact Tractors



Yanmar Ym1500D, 19 hp, 4WD



Mitsubishi D1850FD
23 HP, 4WD, From \$4,500

ALSO AVAILABLE

- Hinomoto 22 HP, 2WD..... From \$2,500
- Yanmar 25 HP, 2WD..... From \$3,400
- Yanmar 16 HP, 4WD..... From \$3,500
- Mitsubishi 31 HP, 4WD..... \$6,750
- Kubota 20 HP, 2WD..... \$3,950

Financing Available
Low Rates/Payments
Delivery Available

Beverage Tractor and Equipment, Inc.

Route 1 Box 494B, Stuarts Draft, Virginia 24477 - U.S.A.
(800) 296-3325 Email beverage@cfw.com Fax (540) 337-0761

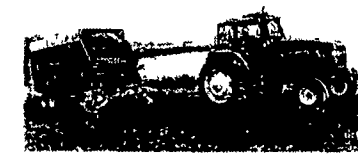


BRANCH
Rts. 309 & 100
New Tripoli, PA
(610) 767-7611
Mon.-Fri. 7:30AM-5:00 PM
Sat. 7:30AM-12:30 PM

NEW IDEA-HESSTON

* 3 LOCATIONS *
Trumbauersville to Finland Rd.
Quakertown, PA
(215) 536-1935 or 536-7523
Mon.-Fri. Sales 7:30 AM-9 PM
Parts 7:30 AM-5PM
Sat. - Sales 7:30 AM-4 PM
Parts 7:30 AM-1PM

NEW HOLLAND
Model 224 silage cart, exc
Weaverline 330 rebuilt silage cart



BRANCH
Lobachsville, Oley, PA
(610) 987-6221 or 987-6257
Mon.-Fri. 7:30 AM-5:00PM
Sat. 7:30 AM-12:30PM

| TRACTORS | COMBINES | TILLAGE | BALERS | FORAGE HARVESTERS | HAY TOOLS |
|---------------------------|--|-----------------------|--------------------|---------------------------------------|-------------------------------|
| DA 6260D, Only 800 Hours | AC L3 4W w/15' Grain & 630 Cornhead | AC 13' Transport Disc | IH 445 w/thrower | Gehl 600 w/2 heads | Hesston 1090 Mower Cond |
| DA 7085D, Excellent | AC F2 w/13' Grain & 4R Corn Head | (2) JD 5-B Plow | NH 320 wire | Gehl 1200 w/2 heads | NH 489 Haybine |
| DA 6275D w/Loader | AC Gleaner FKS w/13' grain & 430 corn head | AC 2000 6-B Plow | Case 230 w/thrower | NH 717 w/2-row head | NH 460 Haybine |
| AC 8030 w/Cab, 4W | AC Gleaner K w/10' Grain & 238 Corn Heads | Ford 5-B Plow | JD 336 wire | JD 35 w/2 heads | (2) Hesston PTO 10 Mower Cond |
| AC 7030D w/cab, excellent | JD 6600 w/13' Grain&630 Corn Head | Ford 4-B Plow | IH 27 w/thrower | JD 99 Blower | (3) NH 479 Haybine |
| MF1155D | JD 4400 w/13' Grain Head | JD 40 Loader | IH 46 w/thrower | IH Harvester w/Pickup & 230 Corn Head | Hesston 1010 8' Mower Cond |
| Farmall 240 | AC 630 Corn Head for M&L | AC 500 Loader | NH 268 | NI 3622 Spreader 220 Bu | Hesston 1014 14' Mower Cond |
| Oliver 77 w/Loader | | | IH 46 | | JD 1380 14' Mower Cond |
| AC Forklift w/10' Boom | | | JD14 | | JD 1209 Mower Cond |
| | | | AC 443 | | |
| | | | NH 273 | | |

Used Equipment Sale
Machines Priced To Move!!!

Field Service Experts...Call Sales Mon. - Sat. and We'll Answer Your Buying ???

