

GET READY FOR SPRING WITH QUALITY MACHINES FROM BINKLEY & HURST BROS. INC.

Finance Plans Tailored To Your Needs. Don't Wait Till Spring, Make Your Purchase Now!

MISCELLANEOUS MACHINERY INCLUDING LOADERS FOR TRACTORS, MANURE SPREADER & MISCELLANEOUS MACHINES & ATTACHMENTS

- 1) (2) 10.00x16 Tires on Rims 3 Rib 70% Tread - **BUY THE PAIR \$100.**
- 2) CASE IH Model 1360 Grinder Mixer, Ground Approx 500 Mixes, with Scales, Mechanical Drive with Hyd Swing, Unloading Auger, 1000 RPM, Big Floater Tires
- 3) UM 4046 - WOODS Quick Attach Loader, Like New to Fit Case IH 5120 Maxxum Tractor, Model 215 with Joy Stick Single Lever Control with 7' Bucket - **\$3,800.**
- 4) UM 4002 - 390 Bu or 2400 Gallon GEHL Scavenger Tandem Axle Spreader with Large Flotation 19 Lx16 1 Tires, **V. Good Cond.**
- 5) Set of 6-Bolt Solid Rubber Tire & Rim Assemblies to Fit Case Unloaders **Ask For Allen in Parts - \$1,380.**
- 6) NE 4493 - SHURCO Truck Tarp System for 18' Truck Body Was \$2,300 - **NOW \$1,950 Plus Installation**
- 7) NE 4403 - 60" ATI Material Bucket for Gehl SL 3825 Skid Loader **Discounted Price \$499.**
- 8) UM 4086 - CASE IH 520 Quick Attach Heavy Duty Loader with 8 Foot Quick Attach Bucket, Single Lever Joy Stick Controls, will Fit 5130-40 and 5230-5240 and 5250 Case IH Maxxum Tractors - **\$3,900 Plus Mounting.**

Good Condition Gehl 322 Scavenger V Spreader, Tandem Axle



UM 4002
Approx 2400 Gallon or 390 Bushel, Large Flotation 19Lx16 1 Tires, **Ready To Work!**

504 Cu. In. Diesel Turbo, Rated 131 HP, Local, Owned, One Owner, Case IH Model 2294 Cab & Air P. Shift



1987 Model with 20 8x38 Rear Tires, 80% New, Excellent Condition, Very Clean

Heavy Duty New Idea/ Kinze 6-Row 30 Planter



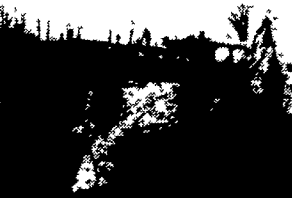
UM 3938
Double Disc Openers, Frame Mounted No-Til Coulters, Reconditioned, **Ready To Plant!**

Must Go! Deduct \$1,500. Articulated Loader, Approx. 100 HP



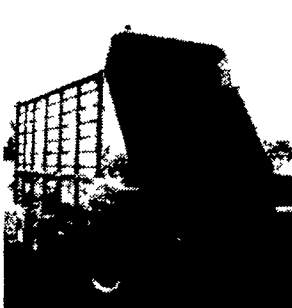
UT 4186 - Fiat Allis Rear Cab Mount Articulated Loader, 10 Ton, 2-1/2 Yd Bucket, Cab & Heater - **Priced to Sell! Was \$17,500 NOW \$16,000 Ask About Good Financing!**

Big Savings - Price Reduced. John Deere 310 C 4x4 Cab Tractor Loader Backhoe



UT 4197
With 4 in 1 Loader Bucket, Very Tight Hoe, Power Shuttle, Ready to Work **\$23,900 OBO**
DEDUCT \$3,000 AND SAVE \$ BUY NOW - \$20,800
For This 4-Wheel Drive Clim Type Bucket

Choose From A Selection of John Deere Forage Boxes



John Deere 716 Tandem Forage Box (Fair Condition)

No Longer Needed In Our Yard Fleet! Save \$4,200! Very Clean Tight Case 586 4x4 6000 Forklift, 21' Mast



UT 4198
Ready to Work, With Side Shift, Good Rubber, 19 5Lx24 Drive Tires, 95% New **\$26,000 OBO**
DEDUCT \$4,200. BUY NOW FOR \$22,700 Ask About Financing!

PRE-OWNED TILLAGE! SAVE \$\$!



- 1) UM 4119 - IH 4500 13 Foot Vibrashank with 3 Row Coil Tine and Packer Hitch Good Cond Mounted Type - **\$1,500 OBO.**
- 2) UM 4120 - BRILLION 14 Foot Late Style Packer with 4" Axle and 18" Packer Wheels Good Cond - **\$900.**
- 3) UM 4047 - IH 4500 Vibrashank Field Cultivator, 18 Foot Pull Type with Buster Bar and Packer Hitch - **\$1,800.**

- 4) UM 4102 - JOHN DEERE 215 Double Offset Disk Harrow, 15 Foot Cut
- 5) UM 4068 - JOHN DEERE 225 Single Offset Disk Harrow, 10 Foot Cut with Lift Cylinder - **\$2,200.**
- 6) UM 4069 - IH 3 Pt Field Cultivator, 12 6" Working Width Model 4500 Vibrashanks - **\$1,150.**
- 7) UM 3891 - 10% OFF KRAUSE Model 2400 Rock Flex Wing Disk Harrow, 26 Foot Cut with Dual Wheels Center Section, Front Blades Measure Approx 21" Diameter on 9" Spacing and Rear Blades Have 20" Diameter on 10-1/2" Spacing Good Frame - **\$8,500.**

- 8) UM 3915 - 10% OFF WILRICH 3 Pt Mounted Ripper with 3 Shanks Spring Loaded Coulters and Depth Gauge Wheels Was \$2,350 - **NOW \$2,115.**

- 9) UM 4003 - SUNFLOWER 24-1/2 Foot C-Flex Wing Disk Harrow with Narrow Transport with Packer Hitch & Hoses Frame & Paint Very Good Condition

- 10) NE 5499 - Deep Till 30" Spacing Sub Soil Automatic Reset with Coulters UNVERFERTH Zone Builder 4 Shank - **Special \$5,900 - New Demonstrator.**

- 11) Chain Link Drag Type Harrows, 8 and 12 Models, Order For Spring
- 12) GLENCOE Field Cultivator Pull Type Hyd Fold Wing Model and Hyd Depth Control 4 Transport Wheels, Good Shovels with Rolling Leveling Baskets 26 Working Width

- 13) UM 3993 - GLENCOE Pull Type Coulters Chisel 11 Shank with Coulters and 4" Curved Shovels - **\$4,250.**

- 14) UM 3962 - KRAUSE Model 4900 25 Foot Cut Rock Flex Disk Harrow, Good Condition (Super Deal!)

- 15) UM 4054 - 12 Foot Brillion Packer with 4" Axle & 18" Wheels - **\$900.**

- 16) UM 4065 - SUNFLOWER 6032 25 Foot Land Finisher with Walking Tandems, Good Cond

- 17) UM 4059 - ATHENS Model 77 Double Offset 10 Foot Rock Flex Disk Harrow with Buster Bar

- 18) UM 4082 - MILLER 12 Foot Offset Disc Harrow Good Blades & Frame - **\$4,200.**

- 19) UM 4070 - SUNFLOWER 4301-5 Sunflower 5 Shank Auto Reset Ripper, Very Good Cond - **\$5,600.**

TRAILER & WHEEL ACCESSORIES

- 1) UM 3901 - 3 Axle 18,000 GVW Hudson Tagalong with Pintal Hitch 24" Deck Height Beaver Tail, PA Inspected - **Only \$1,750.**

- 2) UM 3520 - 315 - 70R22 5 Bandag Recapped Tires with Waste Hauler Lug Tread Mounted on Dayton Wheels, Great for Truck that Runs in the Field Off Road Set of 4 - **\$1,275**

Almost New Pre-Owned Case IH 1360 Grinder Mixer



UM 4113
150 Bushel with 26" Wide Mill, 700 Scale, Hyd Control Lift and Swing Unload Auger with 45" Vertical Extension, 1000 RPM PTO, Ground Approx 500 Miles, Approx 1-1/2 Years Old **Huge Savings From New Price!**

One Owner 1996 Model 2166 4-Wheel Drive Combine (AFS) Only 607 Separator Hours



With Specialty Rotor, Field Tractor, Hopper Topper Extension, Updated Yield and Moisture Monitor, Removed Straw Chopper, 1063 6-Row Corn Head, 20 Foot Grain Platform with Header Transport Cart - **Good Financing - Ask For Landis.**

Save Over \$2,000 Almost New Ford 655E Backhoe

UT 4175
Only 511 Hours, 4 Wheel Drive Cab, 1996 Model, Extindahoe, 18'5" Reach, 89 HP, New Holland BSD450T Diesel **Super Deal! \$51,000 BUY NOW FOR ONLY \$49,800**

CHECK OUR SELECTION OF QUALITY USED TRACTORS

- 1) UT 4245 - IH 1206 Diesel Tractor Wide Front with 6922 Original Hrs 18 4x38 Tires, 90% New 540 and 1000 PTO - **\$5,950.**
- 2) UT 4178 - CASE IH Magnum 7120 4x4 Cab with 18 Speed P Shift 155 HP Very Late 1991 4 Reverse Trans 2 450 Hrs 540 and 1000 PTO Shafts Triple Hyd Outlets Weight Frame & Weights
- 3) UT 4118 - IH 3088 4 Post ROPS Tractor One Owner Nice Was \$18,900 OBO
- 4) UT 4100 - IH 656 Diesel Hydro with 3 Pt Hitch One Owner Hydro and Engine Work Done in Last 3 Years **Ask For Rick**
- 5) UT 3973 - IH 1086 Cab & Air with 20 8x38 Rubber 540-1000 PTO White Cab
- 6) UT 3860 - CASE IH Magnum 7110 MFD 4x4 18 Spd P Shift 2 600 Hrs 20 8x42 and 14 9x30 3 Remotes Dyno Tested 150 HP Was \$49,800
- 7) UT 4204 - M.F. 285 Diesel Tractor with Loader Rated at 81 HP Rear Wheel Weights - **\$12,900.**
- 8) UT 4192 - CASE IH 1594 85 HP 2 WD Cab & Air with Case IH Model 74L Loader, 3150 Original One Owner Hours **Ask For Landis**
- 9) CASE IH 2166 4 Wheel Drive Combine 1 Owner 1996 Model Loaded
- 10) UT 4216 - CASE IH 5240 2WD Cab & Air P Shift New 18 4x38 Radials, Very Good
- 11) UT 4212 - CASE IH 2294 2WD Cab & Air P Shift Local One Owner Red 1987 Model, Only 2955 Hours
- 12) UT 4233 - M.F. 165 Diesel Tractor with Multi-Power
- 13) UT 4232 - CASE IH Special 50 000 Edition 1996 Model 5240 2 Wheel Drive Cab & Air, Power Shift & Shuttle Reverser Almost New 18 4x38 Radial Rear Tires Loaded, One Owner Only 836 Hours

CHOOSE A PRE-OWNED SKID LOADER FROM BINKLEY & HURST BROS. TODAY



With Reconditioning Including Driveline Adjustments, Means You Get More For Your \$\$! Ask About Driveline Guarantees by Binkley & Hurst To Assure You Of Quality Reconditioning.

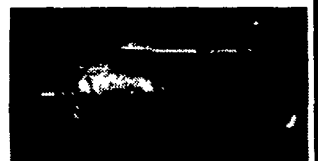
- 1) UT 4194 - GEHL 4500 Skid Loader, Gas Approx 40 HP with 66 Bucket, Nice Clean Machine - **\$5,500**
- 2) UT 4242 - GEHL 4615 Diesel 44 HP 1987 with 3467 Hours Aux Hyd Self-Leveling Loader, Backhoe Hyd - **\$8,250**
- 3) UT 4237 - CASE 1840 only 1 500 Hours with Bobcat Style Foot Loader Controls and Hand Steering 50 HP Case Cummins Powered - **\$11,900**
- 4) UT 4166 - GEHL SL4625 47 HP Diesel Kubota Power (1994 Model) Good Rubber and Bucket One Owner - **\$11,500**
- 5) UT 4154 - CASE 1840 50 HP Cummins Powered Aux Hyd 2 548 Hours, Self-Leveling Loader Deluxe Seat 63" Dirt Bucket, Lights - **\$12,500.**
- 6) UT 4148 - CASE 1845C Case Cummins Powered with 73 Snow 7 Liter Bucket, 12 00x16 5 Tires - **\$9,900**
- 7) UT 4145 - CASE 1845 Gas Engine with New 12 00x16 5 Flotation Lug Tires
- 8) UT 4113 - CASE 1845C 1991 Model 73 Utility Buckl Aux Hyd Good Rubber 12 00x16 5
- 9) UT 4114 - CASE 1845C 56 HP Cummins 73" Bucket
- 10) UT 4102 - CASE 1845C 56 HP Cummins with Aux Hyd 73 Utility Bucket with Bolt on Edge One Owner **\$11,500.**
- 11) UT 4053 - GEHL 5620 Perkins Powered 52 HP Diesel with Good Bucket & Tires
- 12) UT 4092 - CASE 1840 50 HP Cummins Diesel (1995 Model) Loaded **\$12,900**
- 13) UT 3952 - CASE 1840 (1990 Model) 72 Dirt Bucket **\$12,900**
- 14) UT 4205 - CASE 1845 C 1994 Model with 80 Bucket Aux Hyd Deluxe Seat
- 15) UT 4217 - CASE 1845C 1989 Model with 56 Approx HP 4 New Tires Completely Serviced Drive Line with Guarantee 73 Utility Bucket - **\$11,250.**
- 16) UT 4156 - CASE Propane Powered 1835C Unloader Approx 42 HP with 66 Utility Bucket and New 10 00x16 5 Tires Counterweights & Lights - **\$8,500.**
- 17) UT 4225 - CASE 1845 Unloader with 90% 12 00x16 5 Tires Good 72 Bucket - **\$6,800.**
- 18) UT 4229 - CASE 1840 50 HP Case Cummins Diesel 1416 Hours 63" Bucket Aux Hyd - **\$12,900.**

Pre-Owned Case IH 3 Bottom 18" Rollover Plow, Auto Reset



With Steel Trash Covers **Come and See, Priced To Sell**

New Holland 575 Square Baler



UM 4004
Very Good Condition **Ask For Landis!**

BINKLEY & HURST BROS., INC.

(717) 626-4705

www.binkleyhurst.com

133 Rothsville Station Rd.
P.O. Box 0395, Lititz, PA 17543-0395
Located 1/2 Mile North of Rothsville

1-800-414-4705
Fax 717-626-0996