

White American 80, Green, 4WD, Canopy, 2,000/Hrs, (3) Rem. Extra Nice. \$18,000. (717)867-4896.

White model 2-135 tractor, cab, air, heat, 20.8x38 tires, 90% completely rebuilt, over/under power shift, new motor, bearings, rebuilt frontend, new paint, \$12,500. 570-587-1725

White 5400 4RN NoTill com planter, monitor, dry fert, insecticide boxes, markers, excellent shape \$2500. 717/789-3983.

Wilrich 19' field cultivator, transports very narrow, \$3650. Zeisloff Eq. 800/919-3322.

Woods 3-blade finish mower, 6' 6" landscape box. Ford 3pt post hole digger w/9" & 12" auger. All items excellent condition. 717-933-8008

Woods 5' trailer type, Bush Hog, mower, \$400. Lilliston 7' trailer type 3-blade finish mowers. \$500 for both. 973-839-9053 NJ



**Potomac Valley Supply**

Call (301) 223-6877 ask for Myron

RENTAL EQUIPMENT - FOR SALE

- Tankers
- Pit Pumps
- 3000 - 4500
- Lag. Pumps

Good Equipment at a great price!

**Your Kinze Dealer, Binkley & Hurst Bros. Inc. Is Your Corn and Bean Planters Headquarters With A Few New Planters Available For This Planting Season And A Good Selection Of Pre-Owned Planters**

**KINZE - Planters that Simply Plant!**

Purchase Now For Large Pre-Season Discounts.

2600 Twin-Line® 16 Row N with solid row Interplant® Package for 31 Row 15"



6, 8, 12 and 16 Row TWINLINE (12' Transport Width)

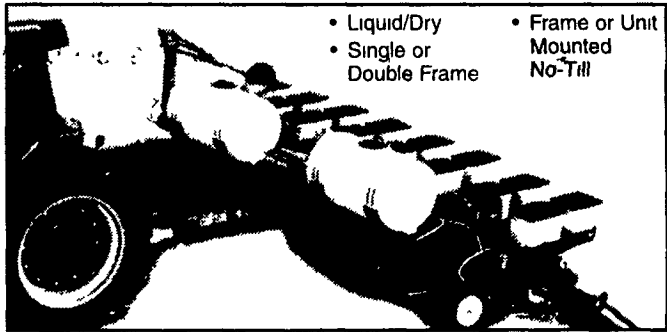
Easy-assess, end-mounted seed transmissions make rate changes simple. Precision-cut, plated sprockets. Rates every 3% or less. Spring-loaded contact drive tires smooth engage/disengage of the drive and reduce residue, rock and mud problems

KINZE® 2500/2600 Twin-Line® Planters. For today's more sophisticated, diversified producers, KINZE's exclusive rotating in-line transport as narrow as 11"2" (13"4" on wide row models) Choose Interplant® of liquid/dry fertilizer options

- Markers
- No-Till Openers
- Liquid or Dry Fertilizer

**PULL TYPE MODELS 4, 6 OR 8 ROW 28"-40" Rows**

We Offer More Configurations To Meet Your Specific Planting Requirements



- Liquid/Dry
- Single or Double Frame
- Frame or Unit Mounted No-Till

**JUST ARRIVED!**

**All New Model 2400 Swing Frame Narrow Transport with 12 Row on 20"-22" Row Spacing. Optional with Interplant 10"-11" Row Spacing One Only!**

**See Our Good Selection Of Preowned Planters For Corn & Bean - Ask About Good Financing Plans!**



UM 3942  
**1997 MODEL KINZE 2600 12-ROW**  
Swing Frame for Narrow Transport with Liquid Fertilizer  
**Priced To Sell!**

UM 4066  
**JOHN DEERE 7000**  
Conservation 4-Row Planter  
**Best Offer**

UM 4012  
**JOHN DEERE 7000 PLANTER**  
6-Row with Liquid Fert., with Monitor & Insecticide

UM 4000  
**IH 800 6-ROW DRY FERT.**  
540 PTO, Super Deal  
**Best Offer**

UM 3926  
**KINZE 12-ROW NARROW TRANSPORT**  
With Liquid Fert, No-Till Coulters

UM 3708  
**IH 800 6-ROW**  
Narrow with Liquid Fert, 1000 PTO, Monitor  
**\$3,750 OBO**  
Let's Get Together!

UM 3634  
**IH 800 6-ROW**  
Narrow 30" Row Spacing with Dry Fert and Insecticide  
**\$3,750 Best Offer**

UM 3913  
**KINZE 6-ROW x 30 MODEL 2000 PLANTER**

UM 3645  
**JOHN DEERE 4-ROW**  
30" Spacing Model 7000 Conservation Planter with Monitor, Double Disc Openers, Dry Fert., Insecticide, Reconditioned  
**\$6,200**

UM 3694  
**JOHN DEERE 7000**  
4-Row Planter with Liquid Fert, Loaded with Lots of Nice Add-Ons  
**\$6,950**

UM 3721  
**PULL TYPE MONOSEM 6-ROW**  
NGT Planter with Double Disc Openers and Dry Fert, Vertical & Cross Fill Augers

UM 3938  
**KINZE BUILT NEW IDEA 6-ROW x 30 PLANTER**  
With Cross Fill Dry Fert Auger, Double Disc Openers

UM 3996  
**KINZE BUILT NEW IDEA 4-ROW PLANTER**  
Loaded with Good Options  
**\$6,500**

UM 3926  
**KINZE TWIN LINE**  
12-Row Swing Frame with Liquid Fertilizer, Monitors & Markers

UM 3748  
**JOHN DEERE 4-ROW**  
30" Planter with Dry Fert., Markers & Monitor, Insecticide, Rubber V Closing Wheels  
**Was \$6,500 - Ask For Merv!**

UM 3687  
**JOHN DEERE 4-ROW x 30 7000 PLANTER**  
w/Liquid Fertilizer Reconditioned  
**\$4,900**

UM 3962  
**JOHN DEERE 7000**  
4-Row Conservation Planter with Liquid Fertilizer

UM 4074  
**JOHN DEERE 4-ROW MODEL 1240**  
Dry, Planted Less Than 1000 Acres, Nice  
**\$1,495**

UM 4075  
**JOHN DEERE 7000 6-ROW**  
30 No-Till with Liquid Fert

UM 4048  
**18 PLANET JR.**  
Seeder Units on 3 Pt Carrier

UM 3800  
**JOHN DEERE 7000 PLANTER**  
6-Row, 30" with Liquid Fertilizer & Squeeze Pump and Markers, Reconditioned Price  
**Was \$8,900 - Ask Merv for Discounted Price!**

Ask About Our Good Financing Plans with Quick Approvals Tailored To Your Need! Now Is The Time To Make Your Move And Be Ready For Spring!

**USED EQUIPMENT**

- Ford 800 Tractor
- John Deere Combine 6600 w/Heads
- IH 4070 Cab Over Truck, Exc Cond
- NH TR96 Combine
- Woods B320 Mower
- JD 21" Disc
- Athens 118 Disc 18"
- Athen 22' Disc
- Brillion 10' Turl Seeder
- NH 855 Round Baler
- NH 855 w/Bale Command
- NH 1010 Balewagon
- NH 1034 Balewagon
- NH 660 Auto Wrap
- Ag Bale Wrapper
- New NH 216 Rake \$13,500
- Tonnuti 10' Hay Rake
- Stoltzfus 14' Lime Box
- NH 973 16' Grain Table
- NH 411 Discbine
- NH 1495 Haybine
- NH 489 Haybine
- DA 4006 w/Loader
- IH 2500 10 Wheel

**"Give Us A Try Before You Buy"**

**J. DAVID MULLINIX & SONS, INC.**  
(410) 489-4363 - FAX (410) 489-7634  
14420 Howard Rd., Dayton, MD 21036

**Binkley & Hurst Bros. Inc. Has A Heavy Duty KNIGHT In Stock For You!**

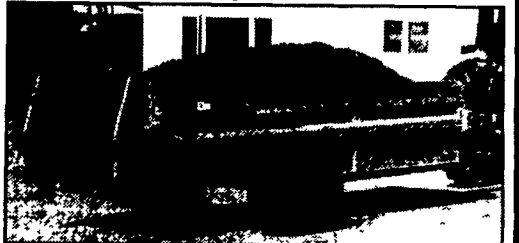
**Retire Your Current Spreaders**  
Get the soil nutrients needed to grow your corn crop this year. If you have pen pack, sticky feed lot or slurry-type material that needs to be spread fast...and spread evenly, you need the **KNIGHT PRO-TWIN SLINGER.**

Choose From (2) Knight V Spreaders In Stock



Model 8030 (Unit Shown in Picture), 2780 Gallon, 372 cu ft, Very Limited Supply - Ask For Amos!

**Low Clearance From Little to Big Heavy Duty Box Spreaders at Binkley & Hurst**



**New 300 Bushel 1030 and 400 Bushel 1040 Knight Box Spreaders**

**500 & 600 BUSHEL MODELS ALSO**

featuring:

- 3/4", ultra-high molecular weight, solid poly floor.
- Thicker, 10 gauge copper bearing steel sides and front featuring all-welded construction
- 3/16" thick, all steel rear endgate
- Variable speed hydraulic apron drive with tractor-mounted control.
- 26" rooster-comb beater.

**10 Year Warranty on Side Rust Through and on the Poly Floor**

**BINKLEY & HURST BROS. INC.**



133 Rothsville Station Rd.  
P.O. Box 0395, Lititz, PA 17543-0395  
(717) 626-4705 1-800-414-4705 Fax (717) 626-0996  
www.binkleyhurst.com

**BINKLEY & HURST BROS. INC.**

133 Rothsville Station Rd.  
P.O. Box 0395  
Lititz, PA 17543-0395

(717) 626-4705  
1-800-414-4705  
Fax 717-626-0996  
www.binkleyhurst.com

