

Int. 544 w/3pt & torque, \$3900; MF 65 gas w/ loader, \$4350; Farmall 340 w/fast hitch, \$3000. 610/562-4464.

Int backhoe loader, gas, runs and operates, has knock, can fix, \$2,250. 4500 Ford backhoe & loader, runs good, has hoe, w/cab and torque converter. Serious buyers! \$3,975 (610)383-5241.

Int. Cyclo-Air 800 Series planter, 12R, folding hitch, all new land parts 400 acres, new monitor 200 acres. Asking \$5000 OBO. 4 1 0 / 6 4 8 - 5 2 9 6 , 410/778-0238, ask for Dave.

International 66 series, red cab w/air, sharp, excellent condition, \$900. Also International 66 series, white cab, good, \$300. (717)656-6109.

Int. fast hitch 8' harrow, \$175; Int. fast hitch rotary mower, \$595; Int. 656 gas w/3pt, \$4400; Int. 826 hydro for parts, make offer. 610/562-4464.

JD 10' cultimulcher will deliver. Brillion cultimulcher for parts. 717-665-4743

JD 1219 mower conditioner, nice, \$3150; JD front mount 4R cultivator. 717/445-8422.

JD 1240 Plateless Corn Planter, Good Condition, \$500. (610)285-6582.

JD 13 disc grain drill, 4R Int corn planter, 2R Ford 3pt corn planter, Oliver 3x16 trailing plow, Oliver 4R cultivator 3pth, 7' Woods Bush Hog, 9' Int transport disc gravity wagon, snow plow for Farmall M. Paul Moyer, 147 Twp Line Rd., Line Exngton, Bucks Co, PA, (215)822-9638.

JD 1440 no-till plateless corn planter, very good condition, \$800; White 5400 no-till corn planter, monitor, dry fertilizer, markers, very good condition, \$800. 717/530-0406.

JD 14T chute baler, used very little, shed kept, A-1 condition, \$1,200. (570)465-3921.

JD 1600 12-tooth chisel w/ walking tandem, \$1600, Int 5500 12-tooth pull-type chisel, \$1650; Rhino 7-tooth 3pt chisel, \$1250. 610/562-4464.

JD 1989 4050 Quad, 4-post, Dual Hyd. 18.4x38 Tires 85%, 4900 Hrs. Sharp! (717)463-2394.

JD 2030, ind. PTO, late model, OH, \$6500; 2 post canopy, \$500; suitcase weights, \$40/each. 814/766-3342.

JD 2040 \$5,300; JD 3020 \$6,500; JD 1010 Gas w/ Loader, Needs Work \$2,300; Heavy 6' Bush-Hog \$550. (410)823-2640.

JD 210 disc, 13', nice, \$1700. Brillion field cultivator w/buster bar, \$1000. 717-933-9186

JD 2350 4WD, runs good, \$12,500. 330/264-2376.

JD 245 loader, joy stick, some weld on frame, good bucket, \$1700 OBO 814-766-3656

JD 2640 late model, hi-lo, 2-outlets, 540/1000 RPM, R&P axle, nice, \$9500 OBO. 814-766-3687 Bedford Co

JD 2640 tractor; L225 NH skid loader. Both excellent condition 717/354-7046

JD 2755 Tractor, Roll-Bar Canopy, Dual Outlets, NICE \$16,500. (301)733-2195.

JD 2840, 18.4X34 tres, 2 hyd., \$7500 609/769-4025.

JD 2840, looks rough, runs well, ROPS, hi-lo, 80 hp, dual hyd., \$6,000. 410-833-9091

JD 2940 tractor, hi-lo, dual outlets, canopy, nice, \$12,500. 301-733-2195

JD 2950 hi/lo, excellent rubber, good shape, dual remotes, 85hp, \$13,500. (717)273-3823.

JD 3150, FWD, 18.4x38 tires, 2 hyds, Rops, \$14,000 609-769-4025.

JD 3255 4WD, 140hp, 4400 hrs., nice, \$21,500. 717-445-6720

JD 353 5X plow w/all new parts. 610/756-3412 evenings.

JD 3800 Chopper, 2R 30" Corn Head, 5' Hay Head, New Knives Before Corn Sialage. Good Condition. Lancaster County. (717)786-0109.

JD 4020, 18.4x34 tires, 1 Hyd., \$8,700 609-769-4025.

JD 4020 Daisel Power Shift \$7,900.; JD 7700 Combine \$2,500. (732)946-8840.

JD 4020D, fender, WFE, power shift, excellent rubber, clean Midwest unit, \$8,500. 410-833-9091

JD 4020 diesel engine block marked R40890, \$1000. 717-530-9459

JD 4240 CAH, quad, 18.4x38 tires, 4700 hours, real nice condition, (215)679-2227.

JD 4250 2WD powershift, CAH, excellent \$29,900. JD 672 rake, hydraulic drive, \$2,300. Feeder wagon w/headlocks, \$2,700. Franklin County, 717/597-7295.

JD 4320 w/cab, side console, 3 pt., PTO, aux. fuel, 18.4x38, 115 hp, very clean Midwest tractor, \$9,750. 410-833-8091

JD 4400 Combine, 1979 Model, C/A/H, w/13' Flex Head \$6,500/OBO. (540)984-9249.

JD 4430 Cab, 20.8x38 tires, very good condition, \$13,500. 610/965-5692.

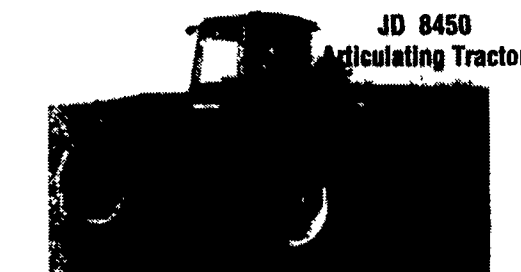
JD 4430 P/S 2WD A/H, excellent, \$17,500. Case grain drill, soybean special, new, \$5,500. 3B auto reset plow, excellent, \$2,000. Brillion transport 14' spring harrow, good, \$800. Bush Hog 6', good. Call after 6pm, (908)439-2203.

- Krause 15' Disc Chisel Plow, very good.....\$2,200
- JD 4850, MFWD, 20x38 duals, very nice.....\$38,000
- JD 4430, QR, new rear tires, very good condition.....\$13,000
- JD 4010 standard, diesel, no 3pt...\$5,500
- JD 7000 6 RN corn planter, Yetter row cleaners, no-till coultter, monitor, no fertilizer.....\$3,200

**908/359-5934**



Case 580C, Loader-Boom Tractor, Ready To Work, Asking \$10,900 complete Kutz Farm Equipment 570-345-4882



JD 8450 Articulating Tractor duals, PTO, 3 remotes, easy starter, field ready, excellent shape, 180 hp, \$27,500. (717) 273-3823 Leb. Co.

**COMBINE PARTS**

**K&J Surplus**  
60 Dublin Rd.  
Lansing, NY 14882

45
55
95
105
203
525
715
815
915
C-2
K,F&L
3300
4400
4420
6600SH
7700
6620SH

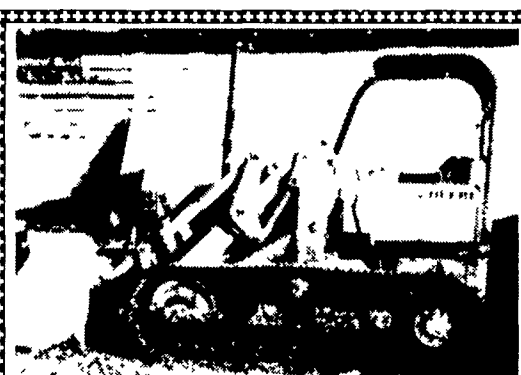
607-533-4850  
607-279-6232 Mobil  
Open By Appt. 7 Days/Wk.  
We Buy We Ship



"First in Synthetic Lubricants"  
The most technically advanced engine protection money can buy  
Full line of gas and diesel oils • gear oil • auto trans oil • hydraulic and hydraulic trans oil • compressor oil • greases  
Chris R. Beiler Jr.  
5420 Limeville Road  
Parkesburg, PA 19365  
717-442-8949



Pixall Big Jack, 4 Row Sweet/Indian Corn Head, Very Low Hours, Excellent Cond. \$80,000 OBO 610-261-1261



JD 450C Turbo, Loader Counter Weights, Canopy, Good Condition \$13,200 OBO Also Front Pallet Forks, For JD Crav. SOLDer \$350 610-683-7931

JD 4230 factory cab, power shift, factory turbo, develops 125hp, also 148 loader w/tongs to handle high moisture wrapped round hay bales. M.L. Messner, (570)324-2841.

JD 4440, power shift, CAH, duals, \$15,000. 410-833-9091

JD 4440 tractor, cab, dual outlets, nice, \$18,500. (301)733-2195.

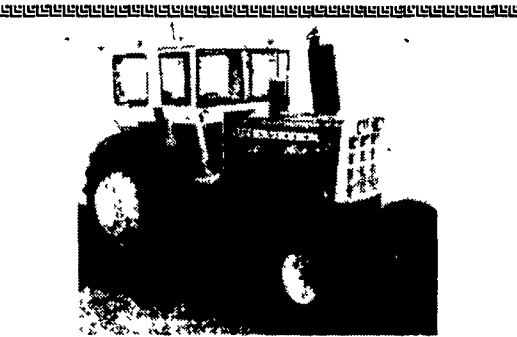
**Antique Case Tractor, S/N300442, Model CI, Solid Rubber Tires 95% Complete, Very Rare! (540) 350-2702**

MF 1260 4WD w/new1246 loader, 37hp, 251 hrs  
MF 375 4WD, ROPS w/canopy, demo, 8-speed shuttle trans  
MF 398-2WD, 8-speed, 1380 hrs., like new  
MF 255 low hrs w/like new 236 loader  
MF 245 diesel, 8 speed  
MF 3140, excellent condition  
MF 520 14' disc harrow  
Gehl 1580 forage blower, used 2 years

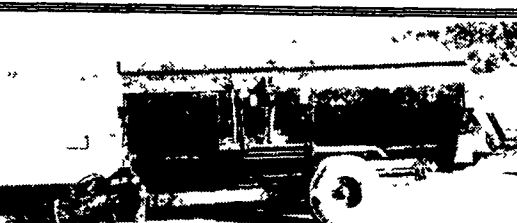
**M & M Equipment Sales & Service**  
RD 1, Box 430  
Roaring Spring, PA 16673  
814-224-1252 days 814-793-2285 evenings



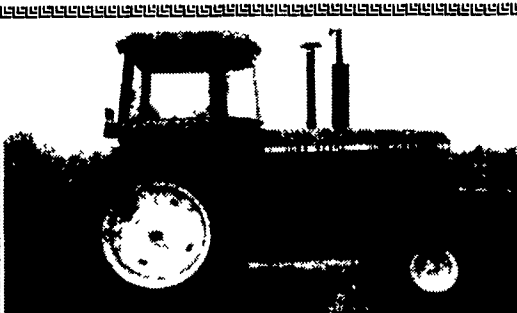
**International Cub Lo-Boy** with or/without 1 yr. old Woods Mower. Engine rebuilt 1 yr. ago. *Must see and hear.* Call 717-469-1130



**Oliver 2255, Low Hrs.** \$11,500 (717) 866-6390 Ext. 384



**Gehl 7500 Mixer** 500 Cu. Ft., Scales, Good Condition \$10,500  
**Weavers Equipment Sales** 570/523-9598 Milton, PA



**JD 4440** Quad Range Trans., Sharp \$18,900 717/354-3929

**Kubota Model 355SS**  
300 Hrs., with Following Options:  
Front Bucket, Brush Hog, Grader Blade, Backhoe  
**\$18,000 OBO**  
6' York Rake, 6' Disc, Almost New, Best Offer  
**973/347-1101 Ask For Jim**

**Cub Cadet, 1650, 16 HP Kohler Engine, Hydra Drive, 50" Deck, Good Condition, \$1,500**  
MF 165 Diesel, 65 HP, 3 Pth, Calcium Filled Tires, Like New \$7,500  
Eager Beaver Power Roller, 1 1/2 Ton Static, Vibratory, Hydrodrive, Like New \$3,000  
**(215) 822-6088**

**STOLTZFUS TRACTOR SERVICE**  
Rebuilding engines, transmissions, PTO's, Tune-ups.  
**1715 Beaver Valley Pike, Strasburg, PA 17579**  
**717-786-0256**  
Amos Stoltzfus  
"15 Years Experience"

**1993 MF 3140 MFWD, 1925 Hrs., Deluxe Seat, Economy PTO, etc., Like New Condition \$28,750** Available with MF 2 Loader & Bale Spear \$31,500  
**(717) 438-3833**

JD 4430, 5,000 hrs, new 18 4x38 tires, A/C, quad range \$13,250  
NEW Krause 5215, 15' no-till drill, complete w/grass box \$20,000  
JD 7000 planter, 6x30", complete w/monitor and insecticides \$7,250  
JD 430 baler, complete w/applicator \$6,500  
Case IH 1063 corn head \$11,500  
Trucking available  
**519-389-7317 • 519-395-4627**

**JD 430 FOR SALE**  
Excellent Condition, 35 HP, 3-Point Hitch, Good Rubber, Wide Front End, Kept Under Cover, Starts Easy, Runs Well \$4,350  
**Call 908-782-7346**