

MAILBOX MARKET FOR SALE

18 pre-assembled stair 3 to 17 step toro wheel horse mower w/rototiller, snow plow, good cond 610-987-6731 Berks Co

Rototiller for Bohlers tube frame tractors, 10-12 hp, \$200; shop manuals for Chevy 88 S-10, Chevy 1973 Chevette, 1977 \$10 610-286-5012 Lanc. Co.

Sputnik, motor & pump incl., bo takes; Sentinel vacuum regulator, \$75 OBO. 610-562-2837 Berks Co

JD Van Brunt DD grain drill, \$650, MF 65 diesel WF \$3750, both good cond, 8N Ford 610-488-1245 Berks Co

JD 246 corn planter, 2R, 3 pth, fertilizer, \$550 610-488-6177 Berks Co

JD 855 compact tractor, 4WD, w/6' belly mower, 6' rake, exc shape, 430 hrs 717-789-3610 Perry Co.

JD 300B loader, 1980, 3 pt, cab, 43 hp, 8 spd reverser, 1-owner, side mount "hydro clipper" sickle bar, good \$8400 717-273-5941 Leb Co

Stationary TMR mixer for 100 cows w/scales, good cond, \$3000; liquid tank spreader, 2000 gal, make offer 717-369-4123 Frankl Co

Howie Christmas tree baler, auto cone, exc cond, must seek \$3900, sprayers, solo 419 air blast, sears, \$125 717-589-7253 Perry Co

NI 484 round baler, gray model, shed kept, good cond, \$4500 No Sundays, 717-949-2411 Leb Co

Cab spring wagon, lights, fiberglass shafts, rubber tires, good cond, \$1900 717-445-7394 Lanc Co

IH 2MH mounted corn pickers off M, IH 20C forage harvester, both in good cond, BO 410-452-5135 Carroll Co

JD 640 hayrake, w/dolly wheel, Brillion 10 ft culti-mulcher, good ear corn, reg Jersey calf & weaned heifer 814-733-2375 Bedford Co.

JD 10' transport disc, needs some repair \$250 717-993-2309 York Co

3 Simmental, 1 Angus-Simmental yearling steers, grain feed, nice 65¢/lb, JD 40 tractor, \$2800 firm 717-834-3401 Perry Co

588 Oliver plow, 5-bttm. 18" auto. reset, exc. cond, \$3000; 686 IH diesel, 1-owner, 4300 hrs. \$8750 717-263-5702 Frankl. Co

Red pullets, hatched March 8, now or at 18 weeks. David E. Beiler, 401 Red Hill Rd., Navon, PA Lanc. Co

9' Brillion sprocket packer, w/bad bearings, 2-4' packers, \$250/all; NH tank spreader w/hyd lid, working \$400 OBO. 717-738-1274 Lanc. Co.

Pygmy goat kids, 11 to choose from, cute & very friendly, lots of colors. 717-252-4880 York Co.

NH 770 harvester w/grass head & 824 corn head, NH 791 IH 550 spreaders, very good, top & main beaters, whole or parts. 610-593-2274 Chester Co.

IH 656 hydro, parting out wide frt 3 pth flattop fenders, good eng., restored 1961 Cub Cadet 717-933-5533 Leb Co.

Complete cult set \$275; R & L plow sets \$250, single row \$175 for Farmall Cub, VGC incl orig. attachments. 610-759-5314 Northampton Co.

Hyd. unit, 20 gal. tank, heat exchanger pump 2 directional control valves 110v w/3pth, 7-1/2 hp motor, \$200. 540-858-3047 Fred Co VA

Oliver 1950 GM diesel WF rebuilt motor, good shape, \$6500. 717-776-3098 or 6380 Cumb Co

Slate & metal roofing; farm buildings to be removed, old wide planks; firewood 717-445-6453 Lanc Co

IH 295 tool bar planter, can be converted to plant, large variety of veg seeds, 15' JD straight grain head, exc cond 302-492-3441 Kent Co DE

Gehl 970 13T gear \$5200, Gehl 920 rebuilt IH harrow, 16' 3 pt, hyd fold \$400, Case 1175 301-582-4135 Wash. Co.

200 gal. saddle tanks, new 12x20 tires, mounted, 15 5x38 tires, 1/2 to 3/4, steel wheels off 806 18"x66", other tires 908-479-4807 Hunt Co

140 Farmall tractor, GC w/Woods 72" mower deck, VGC \$3200 215-249-3698 Bucks Co

1-owner Oliver 550 gas 6,000 hrs, good cond & plow, \$6000. 717-367-0895 Lanc Co.

4' bush hog, good cond \$250, Ford 505 7' sickle bar belt drive, good cond, \$550 717-872-8124 Lanc. Co.

14hp garden tractor Simplicity Sovereign, 42" deck, wheel weights, chains, snowplow, \$800; 14" Homelite chainsaw, \$50; Oak Veneer doors, \$25/ea 717-548-3863 Lanc. Co.

Power take-off, Myers blow sprayer, used very little, good cond. 610-869-9729 Chester Co

2 row potato planter, \$1000, 2 14.9-28 new rear tractor tires, \$175 ea 717-741-1761 York Co.

AC D14 NFE, SC \$2500; D-10 w/belly mower, \$3500; 170 AC diesel w/weights, \$4250; Hillsboro 20 ft. deck-over, 14840 GVW trailer, \$4250. 717-292-6292 York Co.

18 large round rye straw bales, grain drill w/13 disc Oliver OBO. 717-653-5990 Lanc. Co.

Hardee 3 pt. 200 gal. 30 ft. boom sprayer, \$1000; JD 34 PTO manure spreader, \$1400. 410-239-8234 Balt Co.

Case 224 lawn tractor, 46" deck, hydro. 12 hp Kohler, good cond., \$1500 OBO 717-665-2626 Lanc. Co.

Woodsaw, flat pulley drive, R/A flat pulley for Ford, manifold for Oliver 77, gas, 7' landscape box, 3 pth, 2-14 3 pth plows 410-398-7680 Cecil Co.

Fast hitch IH plow, 2 or 3 bttm, 3rd bottom can be unbolted and removed \$75 OBO 610-274-8019 Chester Co.

Farmall H, exc cond, \$2000 OBO, Super H exc cond., 3 pth, \$2500 OBO 410-692-6683 Harford Co.

60x37 tobacco shed & 22x29 corn shed, will sell to BO Lv. mssg. 717-285-0372 Lanc Co.

NH 320 baler w/kicker, compl rebuilt \$2500 717-369-5177 Frankl Co.

Ford 2110 w/730 loader, \$4000, \$56 planter, exc cond, \$700 for chopper, FA exc cond, \$600. 717-423-5184 Cumb Co

Reg Jerseys, cow due July, good family cow, bulls, 3-6 mos., VG dams records 19,000-23,000. Eves., 814-652-5672 Bedford Co.

JD 655 diesel 4-WD, 60" loader, 550 52" rototiller, exc cond. 717-872-5109 Lanc Co.

White 5400 6RN corn planter, no-till dry fertilizer, insecticide monitor, trash masters, field ready, IH 2001 loader. 814-364-9116 Centre Co.

JD 1010 gas block \$400, good, FA parts not starter type. 570-937-4558 Wayne Co.

Wheat straw, bright oats, soybeans, 3ph fert. spreader, 6" transport grain auger, 31', 34' bale elevator, hammermill. 215-256-8533 Montg Co.

Ford 2110 MFWD 916 hrs, ex. cond, shed kept, \$12,500 570-966-2954 Union Co.

Int 1066 tires, good low hrs., Int 720 5-bttm. auto, reset, Int. #55 11-shank chisel plow, \$8500, will sep. 304-728-0046 Jeff. Co

Wheelchairs, 10 w/o legs, good cond, \$65 ea., your choice, fold-up type. North East Md, 410-658-4351 Cecil Co

Beef heifer, nice size w/1st calf by side, \$825, NH #33 flail chopper \$170. 717-933-4721 Berks Co

JD 630 tractor, VGC, \$5150, M3B, 2-way plow, \$295, MT 2-bttm \$125. After 5 pm, 717-249-2591 Cumb Co

JD 5' belly mower fits M through 430, compl. unit, IH 222 5' sickle bar mower w/orig cutterbar, both exc 570-324-2821 Tioga Co

1974 Dodge cube van, good cond, \$800, 9' power angle blade for central hyd \$800 570-875-2558 Sch Co

Oliver 70 tractor, \$1650 wagon, running gear, 5-ton Fordson, 1922 tractor, Farmall H tractor, \$1200 610-489-7831 Montg Co.

White model 5100 4-row corn planter, liquid fert., insecticide boxes, very nice, \$1700. 717-933-9186 Leb. Co.

Akita females, AKC, 5 year old, good producer, fawn, \$200; 11 mo. old, white, \$250. 717-367-8441 Lanc. Co.

200 gal. 3 pt. sprayer w/pump & controls, \$350; 9 ft. cultipacker, small spools, \$150, 675 ELS spreader, old style \$225 OBO 717-354-7737 Lanc. Co.

Club lambs; reg. Hampshire & Southdowns, sheer; reg Hampshire spring pigs. 717-757-6062 York Co.

4,000 tobacco lath, .25 ea., some new, .22 ea. David S. King, 224 Lampeter Rd., Quanyville, Pa. 17566 Lanc Co

DeLaval 3 units, DV 55 lb. pails \$675 ea 717-687-7939 Lanc. Co.

Rissler self-propelled TMR mixers, model 380; & model 45, both completely rebuilt & in exc. cond. 717-335-3089 Lanc. Co.

Pygmy goat kid, buck, dehorned, tame, \$50. 717-548-3958 Lanc. Co.

Rear nms w/tires for Farmall A or AC B \$50/pr., buck saw \$25, '79 Seville diesel, silver, beautiful cond., \$4500. 717-687-0743 Lanc. Co.

Mini donkey, female, gray, registered, 26"H, born 9/18/97 \$1500 860-564-2579 CT

1975 Int 1600 stakebody, good cond, \$900; man-lift hyd. 12v & 110 push type \$500, concrete pipe. 717-933-4000 Berks Co

Morgans, colts/fillies, \$1200-\$2500, Palomino \$3500 bred, make drives, \$3000; black driving gelding \$3500; dressage saddle \$350. 717-235-2950 York Co.

Jeep Cherokee 1985 2-dr. 4 cyl 4-spd., runs good, 4WD, 120K mi \$1500 OBO. 570-386-3071 Sch Co.

JD B, late 40s parts or fix up. Eves., after 6, 609-758-2639 Mon. Co.

3 rear Farmall wheel weights \$100; Lincoln model SAE 600 3-phase welder with leads \$200, can deliver. 570-345-8179 Sch. Co.

10 yr. old Percheron mare, exc. worker, \$1475. Isaac Lapp, RD 1, Box 130B Mill Hall, Pa. 17751. Clinton Co.

Pony wagons, all new; Morgan horse colt. 410-239-3175 Millers, MD

Small plow & disc, fits wheelhorse tractor, used very little. 717-393-8339 Lanc. Co.

Plastic layer, 3 pt. 4 ft. w/dnp flat bed, \$350; hay, orchard grass, no rain \$2 at barn, appx. 250 bales. 717-244-8222 or 9022. York Co.

Geese, dressed or alive. Brown Swiss cow, due in May, \$1250 300 Hess Rd, Leola, PA 17540 Lanc. Co.

Chukar partridge, flight-conditioned, 13 wks, \$3.40 ea; taking orders for Bobwhite Quail. 717-687-5143 Lanc Co.

JD 3 pt. 2 pr. plateless no-till corn planter, dry fert, corn planter, insect, VGC, field ready. 570-739-4594 Sch Co.

JD 1209 haybine, good \$1500; JD 346 baler w/thrower, \$2000. 610-683-7931 Berks Co.

Holland 2-row mechanical transplanter, 700 OBO and Ontario grain drill on steel \$100 OBO. 610-682-7335 Berks Co.

1983 Rockwood 24 ft class C motorhome, 460 eng, 72K mi., roof, air, new refrigerator, sleeps 6, good cond 717-624-3192 Adams Co

Cocker males, Chocolate/White, \$275, Buff \$100; proven Bassets, 10 mos males and female \$100 to \$250. 717-786-8127 Lanc. Co.

1984 Bronco, 2 for parts, \$200 rototiller for Ford, 12 horse garden tractor \$150 570-672-2113 Columbia Co

IH 56 corn planter, 4R \$235 White 5400 4-row no-till planter \$495, trailer sprayers \$195 & \$295, JD 1240 plateless planter 717-653-5926 Lanc. Co.

Saddlebred horse, broke to drive, excellent rider 5162 Newport Rd, Gap, PA 17527-9704

2 JD 111 lawn tractors with 38-inch deck mowers \$300 ea., steel wheel hayrake 810-777-2931 Berks Co

NEW YORK STATE TWO CYLINDER EXPO FOUR JULY 9, 10 & 11, 1999

Featuring: John Deere Unstyled 'B' New York Steam Engine Association Grounds Gehan Rd., 5 miles east of Canandaigua, NY, just off US Rt. 20 **Daily tractor pulls, pedal tractor pulls, demonstrations, parades, displays, slow race, parts vendors, toy vendors, craft vendors, souvenirs.** For exhibitor, vendor or spectator information call **716-526-6607** E-Mail: NYEXPO@fingerlake3.com Web Site: www.fingerlake3.com/NYExpo

Excellent Rates on Farm Owners Insurance



TRANSPRO INSURANCE, INC.

Solomon "Mike" Becker President

854 Bellaire Road Elizabethtown, PA 17022 (717) 367-2462 1-800-435-3706

JAY ZEIGLER Standing Seam Metal Contractor

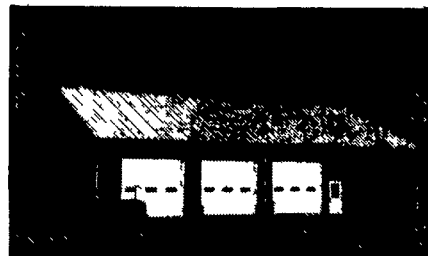
Since 1963 "Simply The Very Best Roof Available"

FREE Estimates

Call For Information



Use on Barns Or Garages



Light Commercial.



Reroof w/Metal

ADVANTAGES:

- Roof can last for 100 years - cost efficient
- Can be installed over existing roof (Asphalt, roll roofing, wood shingles)
- Is environmentally safe
- Beauty - colorful (galvanized, 40 lb. terne, terne-coated stainless, and painted steel in over 20 different colors.)
- Can be installed on flat roof with as little as 1/2" pitch per foot.
- Good for homes, farm buildings, garages, commercial buildings.
- Sheet in continuous length installed with concealed fasteners with double lock seam for water tight application.

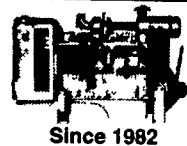
PO Box 231 Rehrersburg, PA 19550

(717) 933-4666 (717) 933-5305 FAX/PHONE



New Construction

SALES SERVICE



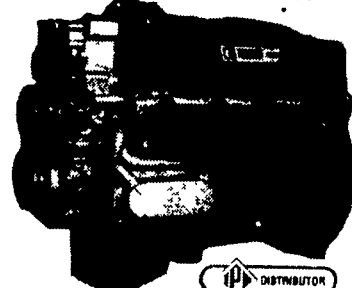
Diesel Power Systems

415 PETERS ROAD GORDONVILLE, PA 17529

Specializing In MID RANGE • HEAVY DUTY DIESEL ENGINES POWER UNITS PTO's PUMP DRIVES CLUTCH REDUCTIONS GENERATORS

LARGE INVENTORY OF NEW & USED PARTS & ENGINES

Used, Rebuilt And Exchange 3208 Caterpillar Engines



INCREASE LIFE AND EFFICIENCY ON EQUIPMENT WITH



"THE FIRST IN SYNTHETICS" MOTOR OILS AND LUBRICANTS INDUSTRIAL - AGRICULTURAL - COMMERCIAL

Call (717) 354-4801 Service