

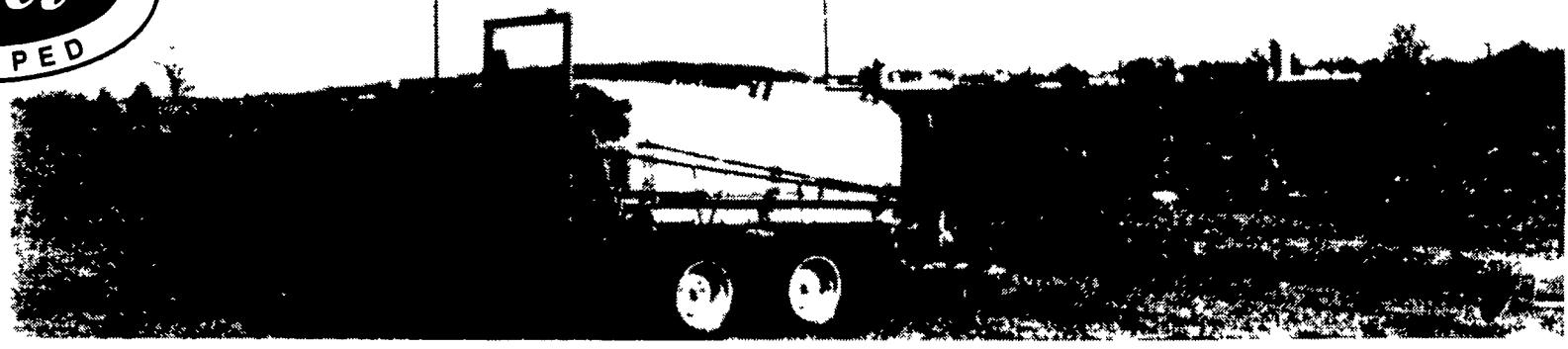
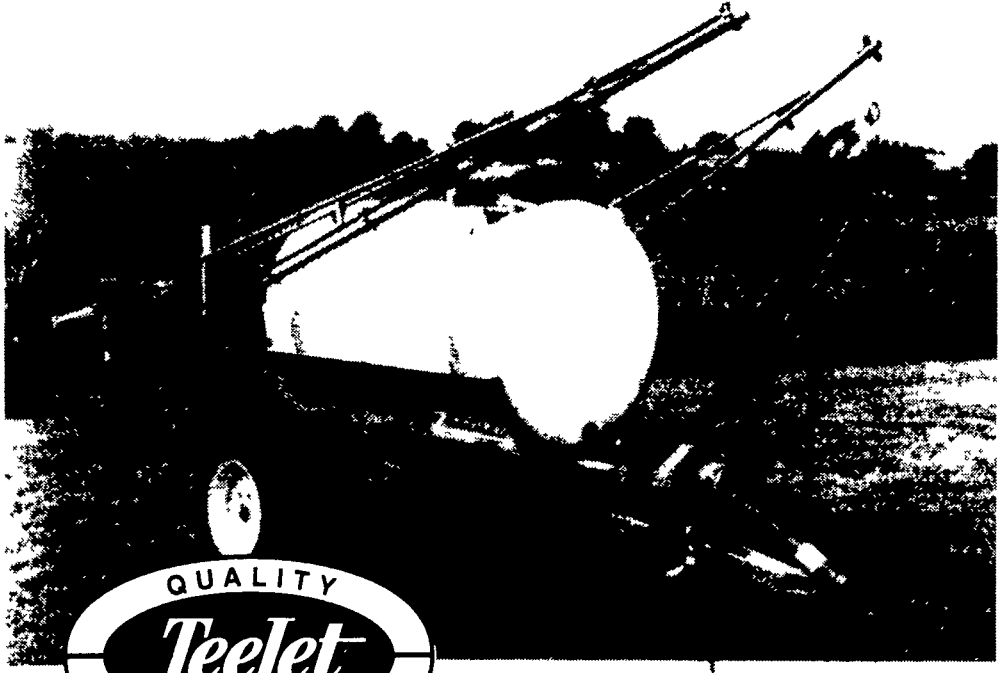
PAUL B. **Zimmerman** INC

SPRAYING EQUIPMENT

200, 300, 500 and 750 GALLONS TRAILER SPRAYERS

Features on Trailer-Type Sprayer

- All Welded Steel Main Frame
- Poly Tank
- Adj. Boom Height
- Hitch Jack
- Adjustable Width Wheel Spacing
- High Crop Clearance
- Booms 30', 35' & 40' Manual, Fold; 30', 45' & 60' Hyd. Fold
- Low Overall Height
- **TeeJet** Computerized Spray Controls, Valves & Nozzels
- Selector Valve
- Chemical Injection System
- Tank Rinsing System



PACER Self-Priming Centrifugal Pumps For Agriculture

'S' Series 3 HP

- Features:**
- Self priming to 20 feet (6.1 meters)
 - Total heads to 120 feet (24.4 meters)
 - Capacities to 200 U.S. GPM (628 liters per minute)

'S' Series 5 HP

- Built in check valve
- Equipped with 1/2" or 2" female threaded connections, NPT



RAVEN®

POLY TANKS

25 To 3300 Gal. Vertical and Horizontal



We Stock A COMPLETE LINE OF



SPRAY PRODUCTS

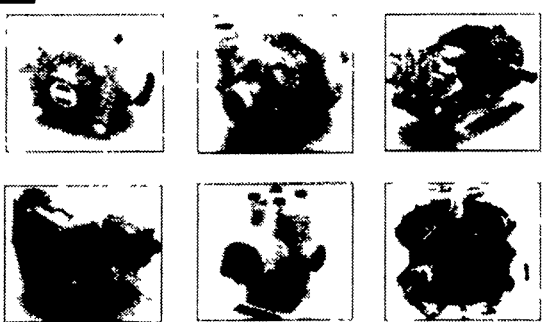
- Nozzels
- Ball Valves/Solenoid Valves



CONTROLS

Hypro PUMPS

The Long Blue Line™



For roller pumps, centrifugal pumps, diaphragm pumps, piston pumps and plunger pumps, no one offers you more quality choices than Hypro. More types. More models. And most of all, more quality and dependability. For virtually any spraying, fluid handling or pressure cleaning need you have, depend on *The Long Blue Line™* for genuine value. Genuine Hypro pumps from your quality Hypro dealer.

NORWESCO



BALL VALVES CAM COUPLERS

In Stock 1/2" to 3"



SHURflo

DIAPHRAGM DEMAND PUMP



PAUL B. Zimmerman INC

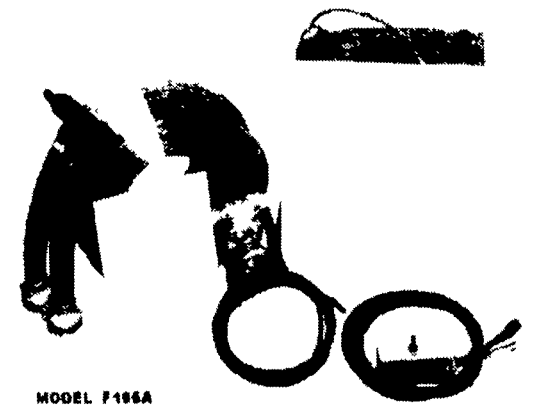
Crop Care FOAM MARKER

- 5 gal. Tank
- 3 Hrs. Foam Per Tank
- Extra Heavy Duty Compressor
- Includes All Wire & Hoses Needed For Installation

\$649⁰⁰

#F105

HOURS:
 Mon, Thurs., Fri. 7-8:30
 Tues., Wed. 7-5:30
 Sat. 7-4:00



MODEL F105A

PAUL B. ZIMMERMAN, INC.

Manufacturers - Distributors

50 Woodcorner Rd., Lititz, PA 17543 (717) 738-7350