

PUBLIC AUCTION

FARM HOUSE w/Approx. 40 Acres - North Cornwall Twp. - 220 Snitz Rd., Lebanon, PA (approx. 950' road frontage on Route 72S., Cedar Crest School District

Directions: 1-1/2 mi South of Lebanon on Rt 72 to intersection off Rocherty Rd

SAT., APRIL 24th 12:00 Noon

REAL ESTATE: 2-1/2 story frame & aluminum sided farm house & attached 1-1/2 story summer house w/tin roofs, covered front & side cement porch w/tin roof, all new vinyl replacement windows, side wooden porch, cement sidewalk & stone driveway all situated on plot of ground approx. 40 acres being 20 Snitz Rd., N Cornwall Twp., Leb. Co., PA (public sewer runs across property) Containing 1st fl kitchen w/modern 16 handled cherry cupboards, dbl S/S sink, full bath w/shower stall & washer & dryer hookup, dining room, living room & family room being 1st fl of summer house 2nd fl remodeled 4 bedrooms 1/2 story - storage improvements Partial basement w/concrete floor & outside entrance, Williamson oil fired warm air heating system, 1-275 gal oil tank, oil fired hot water heater, Rheem central air conditioning, drilled well w/submersible pump, private septic & updated 100 amp electric Zoned agricultural

For inspection of Real Estate phone auctioneer 717-272-7078

10% down day of sale - balance upon settlement in 60 days

Terms & Conditions By Order Of:

Elizabeth P. Weber, Executrix for Dorothy T. Hoke Estate Earnest L. Hoke, Helen I. Crawford & Maryann R. Clarke Weiss, Weiss & Weiss, Attys

Kleinfelter's Auction Service

105 Chapel St., Lebanon, PA 17046

Phone (717) 272-7078

Clayton, David & Ralph Kleinfelter,

Auctioneers AU-002057-L

Public Auction Register

Closing Date Monday 5:00 P.M.

of each week's publication

PUBLIC AUCTION

Of Oley Real Estate, Farm Equipment, Power Tools & Household Goods on

Saturday, April 17, 1999

Located at 1782 Memorial Hwy. (Rt 662), 3-1/4 mi. S. of Oley (Jct. Rts. 662 & 73) or 1-1/2 mi N of Yellow House (Jct Rts 662 & 562) Oley Twp., Berks Co.

2-1/2 story plaster over stone home having 7 rooms & bath Oil fired hot water heat & drilled well Detached frame wash/butcher & smoke house, garage, 3 bay frame barn & other outbuildings situated on 1.96 acres A home ready to move into Oley School District

IH 340 utility gas tractor w/2 pt., IH 34 front end loader for same, IH 12KW PTO generator, IH 2 pt 2x14" plow, 2 pt 7' disc, & 8' harrow, 2 pt/3 pt adapter, 7' roller harrow, 3 pt 6' chisel plow, 7' scraper, & PTO log splitter, 16" tandem axle car trailer, Simplicity 4211 lawn tractor, ACE 5 hp rear tine roto-tiller, Chief garden tractor, 8' snow plow, Forney welder, anvil, platform scale, Craftsman 10" table, 8-1/4" radial arm & 12" band saws, 13" drill press, 4" belt/disc sander, 1-1/2 hp air compressor, Duracraft 12" x 36" wood lathe, Grizzly dust collector, AMT jig saw & 4" jointer, misc. power, hand & garden tools

2 oak bureaus, Whirlpool 30" elec range., mantle clock, decor wall & shelf racks, Fiesta, cooking utensils & many more items

Sold for

Robert & Margaret Rhoads Real Estate offered for Daniel & Janice Schlegel

Sale at 9:00 A.M. Real Estate at 12:00 Noon.

Terms Cash or PA Check

Refreshments on Premises

FREY AUCTIONEERS

610-689-5269

AU-000300-L

FARM AUCTION SAT., APRIL 17, 9:30 AM

Located in Somerset County 3 miles east of Somerset along Rte. 31, opposite the Shanksville Road.

COMPLETE HOLSTEIN HERD *

FARM MACHINERY *

DAIRY EQUIPMENT *

HOUSEHOLD & ANTIQUES

Complete herd dispersal of 52 Holstein cows & bred heifers

(To sell at 11 30 AM) This is a young herd of all home raised cows that have not been pushed with good feet, legs and udders Low SCC, all A.I sired and bred by ABS sires, milked in tie stalls, 10 fresh in the last 60 days, 8 due in May and June and the balance in various stages of lactation, vaccinated with 9 way This is a nice clean herd *Also selling - 10 bred heifers due for fall *

DAIRY EQUIPMENT (To sell with cows) 2" ss pipeline for 46 stalls, 100+ Alamo Surge pump, 3 Surge mini orbit milkers, some other dairy equipment

FARM EQUIPMENT (To sell at 10 30 AM) NH 975 combine w/11' grain head, NH 770 harvester w/corn & grass head, Badger 184 pto liquid manure pump, Badger 316 1500 liquid manure tank spreader, Badger 416 forage wagon, NI 1 row #310 corn picker, JD 495 4 row corn planter, NH forage blower, Century 300 gal sprayer, 1976 4x4 Chevy pick up, lime spreader, Oliver drill, hammermill, augers & elevator

HOUSEHOLD & ANTIQUES (To sell at 9:30 AM) old dining room table, library table, rocking chair, dressers, old chairs, trunk, German bisque doll w/leather body, celluloid doll, 3 quilts, egg scale, old postage scale, school desk, old beer light, meat slicer, patio table & chairs, adding machine, mixer, humidifier and other antiques & household items

Auctioneer's note: Due to the loss of most of their farming land because of the demolition of the turnpike bridge, Don & Mary are selling their dairy herd, bred heifers, dairy equipment and the farm equipment used in their daily operation

Terms: Cash or good check, out of state checks require bank note Lunch available

Don & Mary Snyder

661 Glade Pike

Somerset, PA

Luce Auctioneers

AU001976-L

(814) 926-2570

(814) 445-2759

PUBLIC AUCTION

Saturday, April 17, 1999 9:00 a.m.

LOCATION: RD1, Port Trevorton, PA, Snyder Co. DIRECTIONS: From Selingsgrove, S. on Rt. 11 & 15 7 miles, at Hilsner's Store & Keller Marine, turn onto Peffer Valley Rd., go 1-1/2 miles, bear right at Susquehanna Mennonite Church onto Produce Rd., continue 1-1/2 miles to sale site. Auction arrows along Rt. 11 & 15 auction day.

ANTIQUES - COLLECTIBLES 3 Pc Oak Bedroom Suite Painted Bed Cut Down Oak Bed w/Applied Carvings Cut Down Oak Washstand Oak Buffet Base Mixed Wood Dropleaf Table Cupboard Top Metal Crib 6 Oak Plank Bottom Chairs Oak Rocking Chairs Kitchen Cabinet Painted Sessions Black Case Mantle Clock Gilbert Mantle Clock Glass Butter Churn Crockers Gray Granite Milk Pail McCoy Covered Wagon Cookie Jar Little Red Riding Hood Cookie Jar Aunt Jemima Plastic Cookie Jar and Salt/Pepper Shakers Coffee Grinder, Large Selection of Salt/Pepper Shakers Depression Glass Pressed Glass Portzlines Dairy Qt Milk Bottle Butter Mold Peanut Butter Glasses Rolling Green Park Tickets Griswold Waffle Iron C I Fry Pans, Dresser Scarves & Doilies Kerosene Lamps Lanterns Milk Bucket Washboard Ironstone Meat Plate Roaster Pin Cushion Quilt Patterns And Patches Win Oil Can Meat Fork Wooden Measure Wooden Blocks Marble Games Porcelain Sign The Atlantic Refining Co Auto Gasoline 20 x30" License Plate Collection 1906 Thru 1958, Num Individual Lic Plates 1916, 1919, Etc Old Louvered Window Shutters, Maytag 2 Cyl Gas Engine Etc., Plus Many Other Interesting Items

FARM MACHINERY - ENGINES NI 12A Manure Spreader Oliver 2 Row Pull Type Corn Planter Oliver 2 Bot Trailer Plow, 8 Disk 8' Harrow 3 pt Hay Rake, 3 Pt M F Roto Hoe 3 Pt Plastic Layer, Arps 3 Pt 6 PTO Snow Blower 8'x16 Flat Bed Wagon 8 Ton Series II Wide Track Running Gear Potato Plow, McCormick Deering 8 Grain Binder 23 Pcs 2"x20" Alum Irrigation Pipe Pr Steel Wheels 6 Lug For N H Equip., Skid Gas Tank Locust Posts Hitching Cart Lister 15 Hp Diesel Engine, Int 6 Cyl Power Unit Int Continental Engine DeLaval #73 Milk Pump Lehigh Cooler Compressor, Milk Coolers Line Shaft Carnage 2 Seater, Niagara 2400 Watt Generator Homelite 1700 Watt Generator w/Gas Engine Chains Saws 2 Slate Cutters 30" Metal Brake Stove Pipe Roller DuPli Carver, Power Kraft 10" Radial Saw, New Porter Cable 7-1/4" H D Builders Saw Craftsman Portable Power Plane, Router 1 Hp Craftsman Bolt/Disc Sander, Jig Saw, Bostitch #80 Frame Nailer, Bostitch Stapler Floor Nailer Air Compressor, Drywall Outlet Cutter, Building Jack Tool Box Windows And Doors Some New New Storm Windows, New & Used Tin Metal & Wood Porch Railing CI Bath Tubs Piles Of Scrap, Snow Guards Roller Track Counter & Vanity Tops Household Domestic Kerosene Refrigerator New Perfection Kerosene Stove w/Oven Maytag Sq Tub Wringer Washer Oak Settee w/2 Matching Rockers Kit Cook Stove Metal Bed & Wardrobe Canner Corn Dryer Pots Pans Plus Everyday Household

TERMS: Cash or PA Check.

Lunch

http://www.auctionads.com

OWNERS: Raymond H. Good

Barbara A. Good

MARK J. JONES, AUCTIONEERING SERVICE

Phone (570) 286-0052 • Lic. #AU 1595-L

Jeff Dunkelberger • Lic. #AU 3043-L

WED MAY 5 - 9AM Harness Shop Liquidation Machinery, Tools Hardware & supplies From Rt 30 take 896 S to second road left (Bachmantown Rd) 1 mile to auction on right by John and Sarah Fisher Lewis Groff auct

WED MAY 5 - 9AM Harness shop liquidation of machinery tools hardware & supplies From Rt 30 take 896 S to Second Road Left (Bachmantown Rd) 1 mile to auction on the right Groff Auctions

WED MAY 5 - 3 30PM Personal Property 2 Barns, Farm Equip Guns Corner of Rt 124 & Mt Psgah Rd York Pa Off Interstate 83 at Exit 7 go east on Rt 124 5 miles Edna Market seller Rentzel's Auction Service

WED MAY 5 - 6 30PM Winross hess Farm Trac & Toys A&C Duffenbach Auction Inc

WED MAY 5 Lumber & Building Materials Wolgemuth Auct 109 N Maple Ave Leola, PA

THURS MAY 6 7PM Canaseraga NY John Munson Farm Machinery Auction Purrung Auctioneers Inc

THURS MAY 6 - Feeder Cattle Sale Jersey Shore Livestock following regular sale 814-349 5099

FRI MAY 7 - Rough and Tumb le's Annual Spring Consignment Sale

FRI MAY 7 6PM Feeder Sale New Holland Sales Stables Inc 101 W Fulton St New Holland Pa

FRI MAY 7 & SAT MAY 8 - 9AM at 503 Highlawn Ave Elizabeth town Pa Classic Cars tools car parts & accessories antiques furniture & household goods For Richard E Myers Estate Abe Shaffner Auct Service

SAT MAY 8 - The Elite of Elmvue Elmvue Holsteins 11 AM Millerton NY 80 Head The Cattle Exchange

SAT MAY 8 - 8 30AM Antiques & Collectibles trains railroad items records books magazines, butcher equip., collectible tools guns & equip household goods tools At R-Own Dairy Building one mile E of Matoromas Pa off Rt 225 15 miles NE of Harrisburg Pa Estate of Mr & Mrs John Straw David Deibler Ed Shoop, aucts

SAT MAY 8 - 8 30AM Lanc Co Real estate antiques furniture glassware car tools & house hold goods At 803 Chestnut St Gap Lanc Co Pa from Rt 30 & Rt 41 intersection take Rt 30 E to Chestnut St turn right to auction on left For I Eby Hosletter Barr Davis aucts

SAT MAY 8 9AM JD Lawn tractor guns furniture antiques HH goods From Scha afterstown take 419 N turn left onto N Millbach Rd at Millbach Mennonite School toward Rich land go 1 1/2 miles and turn left onto Poplar St to property on left 6 Richland Rd For Raymond & Ada Weaver Aaron E Martin aucts

SAT MAY 8 - 9AM Household goods antiques & tools At 1921 New St East Petersburg turn W off Rt 72 on New Street Lanc Co Pa By S Roy & Rhoda Hollinger Robert E Jeffrey R Michael L Martin aucts

SAT MAY 8 - 9 AM J Henry Stoltzfus owner RD 1 Mill Hall Clinton Co Pa C S Supply Hardware Store Liquidation Sale Auct John Esh

SAT MAY 8 9AM 24th Annual Consignment Sale Cumberland

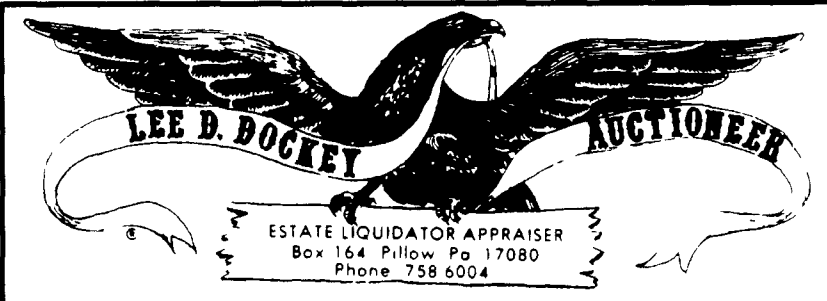
Valley Amish Schools Held at Jacob Flaud Farm 15700 Brunt Mill Rd Newburg Pa 17240 Franklin Co Pa 717-423 6438 Quilts shabby flowers etc Steve Petersheim aucts

SAT MAY 8 9AM Tractors hit & miss engines farm equip guns 186 Pennsy Rd New Providence Pa By Harold L & Esther Mae Sample Wolgemuth Auction

SAT MAY 8 9AM Real estate brick 2 1/2 story dwelling antiques household goods tools tractor & car At 1215 Swamp Bridge Rd West Cocalico Twp Lanc Co Pa For Martin S Enck & Elizabeth Enck Horst Aucts

TOY SHOW

Leesport Farmers Market Social Hall
Rte 61 Leesport, PA
Sunday, April 18, 1999 - 8 30 am to 2 pm
FREE ADMISSION
Flea Market Open
All Categories of old toys and collector toys
150 tables of toys indoors
Contact Gallagher Productions
(610) 562-9404



Public Auction

Estate of Nancy & Stanley (Jim) Hawkins
Saturday, April 17, 1999 8:00 A.M.
Location: North of Harrisburg, PA, 1 Mile South of Duncannon - Turn off Routes 11 & 15 onto Cove Road, Go 2 Miles to Auction Site - Watch for Signs Day of Auction.

ANTIQUES & COLLECTIBLES

FURNITURE: Oak Includes 2 round Glass China Cabinets (1 w/Carved Columns & Paw Feet) 2 Ext Tables, Dbl-Door Kitchen Cupboard, 3-Pc Bedroom Set, Dressers, Wardrobe, High Chair Converts to Rocker, Platform Rocker, Etc., Primitive High Back Sink w/2 Door Top & 2 Doors in Base, Low Dry Sink (Ref.), Fainting Couch, Brass Bed, 2 Washstands, Flat & Round-Top Trunks, Sectional Bookcase, Spinning Wheel Chairs, Adirondack-Type Stand & Rockers, Wooden Porch Swing, MISC. ITEMS: Wooden Hand-Drawn Cart, Yam Winder, Black Mantle Clocks, Elect Horse Clocks, Kerosene Lamps, Deitz Lantern w/Tin Reflector, Tin PRR Wall Light, Railroad & Barn Lanterns, Carbide Lights, Apple Peelers, Cherry Seeders, Copper Washboiler, Balance Scales, Butter Churns (Tin & Wood), Sadirons, Coffee Grinders, Cast Iron Corn Muffin Pans, Teakettle & Musk Kettle, 12-Hole Candle Mold, Wooden Planes, Ice & Cross-Cut Saws, Rug Beaters; Wooden Duck Decoys, Wooden Lobster Traps, Lg Sel of Fishing Equipment (Lures, Rods - some Bamboo, Etc.) Advertising Tins (Tiger Chewing Tobacco, Dillon Co Cut of Tobacco, Etc.) 2 PRR Porcelain Signs, Iron Door Stops (Frogs, Cats, Dogs, Etc.), Plaster of Paris Carnival Premiums, Sel of Jugs & Crock, Yellowware Mixing Bowls, Pictures & Frames, Quilts (Worn) Japanese Flag, WW I Helmet, Iron Victorian Jardinieres, Mandolin, 2 Banjos, Avon Bottles; Pez Containers, Coll Salt/Pepper Shakers, Butter Bowls & Wooden Kitchen Items; Misc Small Items too Numerous to List! **15 PEDAL CARS-TRACTORS** AMF Firefighter No. 506, Sportscar, City Fire Dept No 9 Charger, Fire Truck, John Deere Mod. 40 & Mod 20 Tractors, Airking Tractor, Kubota M6950 Tractor, Ford T.W 5 Tractor, International Tractor - Restored, Western Flyer Tractor, Spin-A-Roo by Garton Tractor, Go-Trac Tractor. **TOYS:** 5 Wagons (3 Wooden, 2 Metal); Metal Scooter, Wooden Sleds (Lightning Glider, Etc.), Ohio Art Giant Ride Tin Ferns Wheel, Bear on Wheels Pull-Toy, Tin Marx Toys (Caterpillars, Typewriter, No 3 Turnover Army Tanks, East/West Coast Tractor Trailer, Etc.), Lg. Set of Fisher Price Pull-Toys, Coll of Appr 30 John Deere Tractors & Some Machinery, App 40 Assorted Farmall, Case & Hubley Tractors, Lg. Asst of Hess Trucks (BP, Mobile, Exxon, Sunoco, Etc.), 3 Buddy L Trucks (1 Wrecking); Lg Tin 3000 Engine w/Hopper Car, 20th Century Limited Train, Coll of Trains (Marx, Lionel, Etc.), Tin Musketeer TV/Record Player by Cohn, Inc., BB Guns, Cast Iron Stoves, Tin & Wood Rabbit-Drawn Cars, App. 19 Sewing Machines, Lg. Coll of Old & Repro Cast Iron Toys (Horse-Drawn Hook & Ladder, Coca Cola, Fire Engines, Surreys, Circus, Etc.). Books, Etc **GLASS & CHINA:** Chickens & Roosters on Nests, Covered Ship Dishes, App 80 Glass Baskets, Pressed Glass Water Pitchers, Coll of App 125 Glass Candy Containers (Amos & Andy, Santa Claus, Rabbits, Cars, Telephones, Lanterns, Guns, Etc.) Pink & Green Depression Glass, Pitchers & Bows, Peanut Butter Glasses, Milk Bottles, Cookie Jars; Castor Set, Etc

HOUSEHOLD ITEMS

Philco Ref/Freezer, G.E 30" Elect Stove, Whirlpool Port Dishwasher, Hotpoint Auto. Washer, Whirlpool Dryer, Philco Floor-Model & G.E Port TV, G.E VCR, Sharp Microwave Oven, 2 Elect Sewing Machines, 2-Pc Living Room Set, Coffee & End Tables, Pfaltzgraff Yorktown Dishes, Misc Dishes, Pots & Pans, Etc

NOTE: Jim attended auctions for many, many years and had a vast, varied collection- virtually impossible to list everything! There's something for everyone - plan now to attend this interesting auction!

TERMS: Cash, Personal Check accepted w/established account or prior approval.

Lee D. Dockey Auction Service
#AU229L (570)758-6004) &
Dockey-Romberger #AU1683L
& Deppen #AU1957L

Debbie E. Forsythe,
Executrix