

**1.03 Acre Country Property  
North of Bowmansville  
PUBLIC AUCTION  
MONDAY, MAY 10, 1999  
Auction Time 7:00 P.M.**

DIRECTIONS: From Ephrata Route 222 north to the end of 4 lane hwy, turn right onto Witmer Road to property on left (OR) from Bowmansville Rt 625 North, left onto East Bowmansville Rd then right onto Bowmansville Rd to Y, go right onto Malsnee to left on Witmer Road, Brecknock Twp, Berks Co., PA



**Box 187 Witmer Road, Reinholds, PA  
LARGE 2 1/2 STORY FRAME HOUSE**

With large eat-in kitchen, large L shaped living room, 2 large bedrooms or office rooms, family room, 1-1/2 bathrooms, large foyer area with open stairway downstairs UPSTAIRS has 4 bedrooms in original house and 3 bedrooms in large addition to house built on in 1991, 2 separate basements, new furnace in 1995 w/4 circulators & 550 gal underground fuel tank, new replacement windows & roof on original house, new well & lg capacity sewer in 1994 Approx 3000 sq ft house w/lots of room Zoned R-A

- Garden Area
- 14'x20' Storage Shed
- 24'x32' Shop/Garage
- Surrounded by Woodland

OPEN HOUSE: Saturday, April 17, 1:00 PM to 3:00 PM  
Saturday, April 24, 1:00 PM to 3:00 PM or by appointment Call Aaron at (717) 733-3511 for appoint or help to obtain bank financing

TERMS: 10% down payment at auction, balance on or before July 1st, 1999  
NOTE: A nice country property with many possibilities Attorney Michael P Kane, 299-5251

Auction By  
**JOHN H. & RUTH ANN HOOVER**  
484-1462

**AARON E. MARTIN AUCTION SERVICE**  
Professional AUCTIONEERING  
410 West Church Rd  
Ephrata, PA 17522  
(717) 733-3511

**Public Auction Register**

Closing Date Monday 5:00 P.M.

of each week's publication

Internet Sale Register will be updated

every Sat. at 2:23 P.M.

SAT APR 24 - 11AM Real estate located at 1591 Elizabethtown Rd., Elizabethtown, Pa For Dorothy K Heistand Long & Long Aucts

SAT APR 24 - 11AM The Spring Happening Sale, 60 of Americ's Finest, Intercourse, Pa The Cattle Exchange

SAT APR 24 9AM Real estate, household goods, antiques, coins, over 8000 baseball cards & car 201 E Main St, Brownstown, turn off 772 at square on E Main St to sale West Earl Twp, Lanc Co., Pa By harvey C Wink Estate Robert E., Jeffrey R & Michael L. Martin, aucts

SAT APR 24 - 1PM 3 parcels of land along Benner Pike between State College & Bellefonte, Pa Centre Co Ron Gilligan, auct

MON APR 26 - 10AM Complete liquidation Gigantes Restaurant/Catering Hall AT corner of Carlisle Pieck & St Johns Rd., Camp Hill Pa Kerry Pae Auct

MON APR 26 - 3PM Antiques, personal property, toys and "Rocky" Pinball Machine To be held in the Reinholds Fire Co Banquet Hall Rt, 897, Reinholds By Minam Powell and Others Art Pannebecker

MON APR 26 - 3PM Antiques, household goods & tools, Hopeland at 788 Hopeland Rd., Lanc Co., Pa For Wilmer & Ada Long Horst Aucts

TUES APR 27 - Yoder & Frey, Inc, aucts

TUES APR 27 - 9AM Gay Fad Nursery absolute public auction Prime young nursery and container stock Maple Grove Rd., Mohn-ton Pa Berks Co Pennypacker-Andrews Auction Centre, Inc

TUES APR 27 - 6 PM New & Used Lawn Equip Martindale Take Rt 322 E of Ephrata to traffic light at Hinkletown Turn left to Martindale, turn left on Gristmill Rd and follow auction signs By Lawn Care Equip Center Kline, Kreider & Good, aucts

WED APR 28 9AM Consignment Sale Farm Equip, Wolgemuth Auct 109 N Maple Ave, Leola, PA Wolgemuth Auction

WED APR 28 - 6PM Carpentry tools & equip At Elverson Fire Hall, Rt 23 in Elverson For PHD Construction Co By Abe Diffe-

bach & Sons, aucts

FRI APR 30 - Farm Equip & Tools Sale for Mahlon W Thrush, 30 McCulloch Rd, Shippensburg, Pa Andrew & Nevin Martin, aucts

FRI APR 30 -45 Acre Farm Northampton Co Farm At 65 Covered Bridge Rd, take Main St out of Northampton thru Kreider-ville, turn R on Covered Bridge Rd For Stella Chaputa Ralph W Zettlemoyer, Auct Co

FRI APR 30 - Farm Machinery, Cliff Chamberlin, Shippensburg, Sale Managed By Kling's Auctions, Inc Landisburg, Pa

FRI APR 30 - 9AM Valuable Real Estate, Antiques & Personal Property Loc 1618 Buttercup Rd, Lanc Pa From Bridgeport go S on Lampeter Rd 4/10th of a Mi turn left onto Buttercup Rd to 6th house on right W Lampeter Twp By James & Vera Brodheck-

er Kreider, Kline and Good Aucts

FRI APR 30 - 10AM 3 miles N of Shippensburg on Rt 696, turn left on Chamberlain Rd, 3 miles S of Newburg Cliff and Betty Chamberlin, owners Kling's Auctions Inc

FRI APR 30 - Horse Consignment Sale, Penns Valley Livestock, Centre Hall, Pa Tack 6 00, Horses 7 00 PM 814-349-5099

MAY

SAT MAY 1 - Consignment Auction of farm machinery and construction equipment at Visscher Farm, Nichols, NY Howard W Visscher, auct

SAT MAY 1 - Quarter Acre Farm, Spring Horse Auction Consignment Sale Hugh Cole, auct

SAT MAY 1 - New Germantown, Pa Farm Machinery and Tools antiques, household, goods and misc Barry Hollenbaugh By Kling's Auctions, Inc, Landisburg, Pa

SAT MAY 1 - 1st Annual Community Auction Fivepointville Fire Co 1087 Dry Tavern Road, 4 miles S of Rt 272 on Rt 897 Brecknock Twp Lanc Co Quilts, crafts, household goods tools, lawn & garden, etc By Fivepointville Fire Co Sale Committee, Local aucts

SAT MAY 1 - 8 30AM Antiques, furniture, collectibles 2130 River

Rd (Rt 441) Bainbridge, Pa

between Marietta & Middletown. By George Nauss Harold "Abe" Shaffner Auction Service

SAT MAY 1 - 8 30AM Commercial restaurant related equip, household goods, office equip

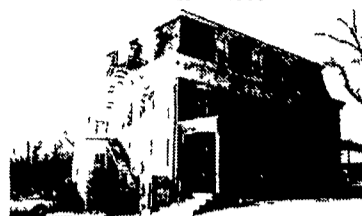
1116 Baltimore St, Hanover, Pa York Co Personal property of Kimberly and David Eline Randy

L Hilker, auct

SAT MAY 1 - 9AM Spring Mower and Equip sale at Bonnie Brae Auction, Rt 724, Spring City Pa Richard J Moyer, auct

SAT MAY 1 - 9AM Toys, antiques & personal property at 161 S Royal St, York, Pa Executor of the George W Hendrix Estate Gilbert & Gilbert, aucts

**REAL ESTATE AUCTION  
Well Known Landmark  
KLEINFELTERSVILLE HOTEL  
Established 1860**



**Kleinfeltersville, PA  
SATURDAY, MAY 15, 1999 12:00 NOON**

Inspection by appointment only -

April 19 & 26, 2:00-7:00 PM

Call FORTNA'S at (717) 867-4451

"TURN KEY OPERATION" located on main thoroughfare Rt 897, a heavily traveled route for tourists and antique dealers and collectors. The Kleinfeltersville Hotel was built prior to 1860 and this Historic Hotel has been in operation since that date. This special property offers Restaurant • Amusement Liquor License • Fully-equipped Bar • 3 Rental Apts. (grossing \$13,500 00 yearly) • 7 Hotel rooms on 2nd floor. • Historic back bar and bar • Mosaic tile floor w/original covered tobacco spitting trough • Dining area • Lg kitchen and additional first flr rooms • Barn • Lg parking lot - all situated on a lot measuring 129' x wide x 264'/- deerep

This is an excellent opportunity to purchase a landmark business in active operation since the 1860's.

TERMS Subject to confirmation 10% down day of auction balance due in 60 days

Conditions by James and Rachel Ober

Kenneth R. Fegan, Auction Manager  
**FORTNA'S**  
Anville Auction Co & Co  
18 E. Main Street, Anville, PA 17003 • Phone 717-867-4451  
Michael R. Fortna CAI Auctioneer Lic. No. 001711-L  
"Areas Leading Real Estate Auction Co"

**Public Auction**

Of Commercial

Auto Repair Shop Equipment

Sat., Apr. 17 - 8:30 A.M.

Due to purchase another business the following commercial tools and equipment of Reb-Tune Automotive Repair Shop will be offered at auction sale to be held on site - 1116 Baltimore Street, Hanover, Pa. (York Co.) DIRECTIONS: From Hanover Sq. take Rt. (94 South) Baltimore st. 1 3/4 miles to property on left, directly across from Cactus Willies.

**COMMERCIAL AUTO REPAIR  
EQUIPMENT & TOOLS**

Ammco Model 3850 Single Pass Brake Lathe w/All Attachments, Adaptex Composite Rotor Kit, Snap-On 7000 Lb Capacity Above Ground Auto Lift Single Phase 220V, Rotary Lift 7000 Lb Asymmetrical 220V and Attachments, Snap On Counselor Digital oscilloscope MT-1665, Snap On Gold Metal Limited Edition Lock and Roll Cranberry & Gold Color Tool Cabinet, Craftsman 6 HP 60 Gal Oil Less Twin Cyl. Air Compressor, 2 Motorcycles: 1994 Yamaha 535 Virago only 3950 Miles in Excellent Condition, 1982 Yamaha 750 Maxim w/10,000 Miles in Excellent Condition, Snap On MT-2500 Scanner w/Domestic and Asian Import Cartridges has updates to 1996 also includes ABS Trouble Shooter Cartridge, Snap On MT-2400 Vantage Diagnostic Tester, Snap On Digital Remote Fuel Pressure Test Kit w/all Attachments, Craftsman Wire Feed Mig Welder 110V w/Attachments, 4x8 Commercial Lighted Sign, 6 H.P. Gas Power Craftsman 2250 PSI Power Washer, Portable Engine Cherry Picker 1 Ton Capacity, Portable Engine Stand 1000 Lb., Vacula Brake Bleeder, 1000 Lb. Transmission Jack, 6 Ton Shop Press, Oxy Acetylene Torch Kit w/Full Bottles & Cart, Schumacher 40 AMP Battery Charger, Parts Washer, Like New 4.5 H.P. Yard Man High Wheel Lawn Mower, Air Hoses, Lug Wrenches, Central Machinery Bench Drill Press, bench Grnder, Drill doctor Bit Sharpener, Older Snap On 3 Drawer Toolbox, 6' Lincoln Lift Stand, bear Head Light Tester, Coated Wheel Protector Wheel Weight Set, 5' Office Desk, 2 Office Chairs, 5' Work Table, Apt. Size Refrigerator, Sentry Fireproof Safe, 5 HP Shop Vac, Zenith 25" Color Remote TV, Hub-Shark Universal Front Axle Bearing Remover Installer, 2-12 Ton Hydraulic Bottle Jacks, 6 Ton Floor Jack, Snap On Battery Alternator Load Tester, Strut Compressor Tool, Lg Bench Vise, Slide Hammer Puller Kit, Exhaust Vent Hose, 4 Jack Stands, Timing Light, Portable Battery Jump Start Unit, Hot Air Gun, Dial Indicator Kit, Halogen A/C Leak Detector, Ball Joint Gauge, A/C AC Mamiold Ga Set w/Hoses, Oil Drain Stand, Assorted Pullers, York Stereo Cassette Player w/Pioneer Speakers, Assorted Car Radios, Eddie Brock Performer Series Carburetor, Sm Stack On Toolbox, 3/4 Ton Engine Sling, 2 Lg. Shop Fans on Stands, Push Broom, 2 Come-A-Longs, Chain Hoist, Gas Fired Franklm Stove, Floor Blower Unit, 4-15" Tires, 1991-94 Snap On Collector Series Calendars, 2 Wood Bookshelves, Assorted Chilton Manuals, Craftsman Ratchet Wrench Set, Craftsman Industrial 1/2 Elec. Impact Gun, Mac Bearing Driver/hex Key Set, Craftsman Air Guns/Tools, Electrical Testing Equipment, Files, Punches, Chisels, Phones, Answering Machine, Air Pressure Gauges, Realistic Citizens Band Trans-Receiver, Inspection Tools, Engine Performance ASE test VHS Video, Pry Bars, Snap On 1/18 Scale Radio Control Car, B&D Industrial Grade Polisher, Compression tester, 29 Pc. Snap On Thunder Drill Bit Set, Craftsman Vacuum Pump, Assorted Shop Supplies such as Break Pads, Oil Filters, Etc., drill Bits, Gas Cans, SNAP ON TOOLS INCLUDE: 1/4, 3/8, 1/2" Sockets Sets, Screw Drivers, Ratchets and Extension Sets, 2 Torque Wrenches, Wrench Sets, Puller, 10 Pc Screw Extractor Set, Assorted Pliers, Air Tools, Tap & Die Set, AC Adapter Set, Hammers, Transmission tail Shaft Seal Installer Kit, Head Gasket Leak Tester, Cooling System Tester, Dis KV Tester Probe, TBI Injector Tester Kit, Tac and Dwell Meter, Electrical Power Probe, Trouble Light, Etc.

Owners: Dave and Kim Eline  
All Inquires: (717) 633-1400 Shop or (717) 630-2281 Home.

AUCTIONEERS NOTE: Most all equipment is in Like New Condition. Most everything is 3 years old or less.

TERMS: Cash or Approved Check. OUT OF STATE CHECKS must be accompanied by letter of credit from bank.

AUCTIONEER: Randy Hilker

PA-AU-002095-L

Food Stand at Sale

NOTE: Only the 2 Motorcycles are being offered w/reserve.



**PUBLIC AUCTION**

of REAL ESTATE

FRIDAY, APRIL 23, 1999 at 6 P.M.

GEORGE and PATRICIA KNAPP

2994 Front Mountain Road, Belleville, PA

Sale to be held on the premises by the undersigned

1-1/2 STORY HOUSE

3-1/4 ACRES

IN THE HEART OF BIG VALLEY

Directions: Route 655 South to Wills Road (Locust Grove Mennonite Church). Make left. Follow Wills Road to Fork at Front Mountain Road. Bear right onto Front Mountain Road. Property is on left approx. 1/2 mile ahead.

Residence designed by Charles Okie, Devon, PA and built by J.M. Young in 1962. Beautifully landscaped. Stream runs through property. Hand laid stone throughout including a walled patio at rear of dwelling and a bridge at entrance to property.



1-1/2 story stucco / barn board dwelling with attached mud room, garage and full basement. First floor - 2 bedrooms, full bath, living room with fireplace, dining room, kitchen with pocket door. Fabulous views from every window. Second floor - large bedroom with antique pot belly stove, bathroom, unfinished fourth bedroom and storage over garage. Features: Radiant heat, all new appliances and fixtures, new interior paint, refinished cabinets, elegant brass reproductions throughout, well water with mountain water access, large stone patio and a 28 by 42' poured concrete barn foundation.

This property is not to be believed - don't miss it.

OPEN HOUSE: Saturday, April 10 1:00 P.M. to 4:00 P.M.

Saturday, April 17 1:00 P.M. to 4:00 P.M.

Owner reserves the right to reject any and all bids.

Terms: 10% down payment day of auction, balance at settlement within 45 days.

Owner: George and Patricia Knapp

Attorney: Richard Gingrich (717) 248-6751

Auctioneer: Mark Glick - AU-349L (717) 667-3795

**BELAWSKE**

PUBLIC AUCTION

FRIDAY, APRIL 16, 1999

11:30 AM

Just off Rte. 414 Between Gleason and Cedar Ridge. (Signs off Rt. 14 at Cedar Lodge - South of Canton, PA)

MACHINERY & HORSE DRAWN ITEMS & RELATED EQUIPMENT

Oliver 88 Row Crop Tractor NFE (Good Rubber - Runs Great), NH 275 Baler w/Kicker, 36 Ft Hay/Grain Elevator, New Idea 360 Manure Spreader (very nice!); JD Roller Rake, JD Disks, 3 Section Drag, JD 17 hole Grain Drill-FB 177B, Niemyer 4 Basket Hay Tedder (PTO), NH 477 Haybine, JD 246/247 2 Row 3 pt. Corn Planter, Ontario 13 Hole Iron Wheel Grain Drill, NH Baler w/Kicker, 32 ft Hay/Grain Elevator, Gehl FB-88 Forage Blower, McKee 3 pt. 6 1/2 ft Snow Blower, 40 Ft Hay/Grain Elevator, New Idea PTO Manure Spreader, Gehl 8 Ton Running Gear - Wood Kicker Rack, NH 5 Ton Running Gear - Flatbed, Skid Tank, Case 95 Ground Driven Manure Spreader (Good); HAY 34 Round Bales - Approx. 1000 sq Bales 1998 Horse/Beef Hay HORSE DRAWN & MISC. - Forecart with Tongue and Thills, Wooden Farm Wagon (On Rubber), Wooden-Wheeled Parade Wagon, Early Bob Sleds w/Orig Box (Very Good - Some Local History with This one!), Walking Team Cultivator, IH 2 Row Team Corn Planter, Syracuse Walking Plow, IH Sulky Plow, Oliver Sulky Plow, 12 Ft. Double Wagon Box, Team Drags, Wagon Spring Seats, Very Nice Team Harness w/Chrome Spots & Matching Bridles, Team Work Harness, Variety of Good Work Collars (Up to 28 Inch), Quantity of Good Single Trees, Double Trees, Neck Yokes & Jockeys, Plank Field Float, Collar Pads, Tie Straps, Lead Ropes, Hoff Nippers, Team & Single Lines, New Set of Hold Back Straps, Grooming Clippers, Fencers & Fencing Goods, 8 ft. Tube Gate, Grab Pounder, Milk Cans, Cast Iron Shop Forge (Complete), Western Saddle, Oxy-Acetylene Torch Set w/Tanks & Cart, Milk Stool, Piano Stool, Wheelbarrows, Picnic Table, 6 Ft. Alum Truck Cap, Milk Dump Station, Much More Small Stuff!

NOTE: The Belawske's Have Sold the Farm Which Necessitates This Liquidation of Good Useable Equipment and Hard to Find Horse Items. Some Items From Howard Jones and Other Neighbors.

TERMS: Cash or Approved Check -I.D. Required.

Owners: ED AND WILMA BELAWSKE

Professional Auction Management And Appraisals By

Randy Hilker Auction Service  
Tioga, PA #1548-L 570-835-4214