



APRIL 12-18, 1999

JEFFERSON'S BIRTHDAY, APRIL 13.

**OUR POLITICAL PHILOSOPHER**

This spring, consider a visit to the Thomas Jefferson Memorial, where architect John Russell Pope implemented Jefferson's own tastes in the Roman Pantheon-style building. You'll see marble from Vermont, Georgia, and Tennessee, and limestone ceilings from Indiana. Japanese flowering cherry trees are in bloom for just two weeks of the spring. The Memorial was authorized by Congress in 1934, completed through the National Park Service works, and dedicated in 1943. The building is open seven days a week, from 8 A.M. to 11:45 P.M.

... is uniformity of opinion desirable? No more than of face and stature. — Thomas Jefferson

**TIP OF THE WEEK**

A bit of vinegar in the dishwasher helps clean up greasy dishes.

**MOLE EGGS**

**Sauce:**

- 1 small onion, chopped
- 1 small red pepper, chopped
- 1 tablespoon olive oil
- 2 cups chopped tomatoes
- 1 tablespoon fresh parsley
- 1/2 teaspoon cinnamon
- 1/2 teaspoon cumin
- 1/2 teaspoon oregano
- 1 ounce semisweet chocolate
- chili pepper (optional)
- 6 small flour tortillas
- 6 eggs
- 8 ounces shredded Monterey Jack cheese



To make mole sauce, saute the onion and pepper in the oil, then add remaining sauce ingredients and cook 15 minutes. Preheat oven to 350° F. Place tortillas into a large oiled baking dish (or two smaller ones). Add 1/3 cup sauce to each tortilla, break an egg over the top, cover with cheese, and bake for 30 minutes. Makes 6 servings.

www.almanac.com

**United Feature Syndicate**

(Printed in the U.S.A.)

200 Madison Ave  
N.Y., N.Y. 10016  
(212-293-8500)



**Needed for population Spring of 99**

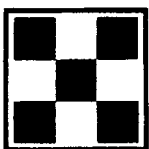
**Hog Finishing Barns**  
**1000-4000 Head Capacity**  
**No experience necessary**

**We Provide:**

- Single source of pigs
- High Health pigs
- Fixed contract payment
- Assistance in obtaining financing
- Successful record in industry
- Long term contracts

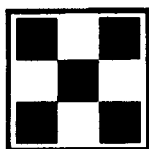
**Finishing Barn Ownership Benefits:**

- Steady, positive cash flow
- Building equity in facilities
- Excellent Part-time income



Contact

**Purina Mills, Inc.**  
**1-800-873-5300**



**Four States Livestock**

Hagerstown, Md  
April 7, 1999

Report supplied by Auction

SLAUGHTER COWS: 98 HEAD, STEADY, SPOTS 1.00 HIGHER ON LEAN TYPES. UTILITY 33.00-36.75; HIGH DRESSING 37.00-38.00; CANNERS 30.00-34.00; SHELLY 30.00 AND DOWN.

BULLS: 15 HEAD. YG#1 44.00-47.50; YG#2 39.75-43.50.

FED STEERS: 57 HEAD, STEADY. HIGH CHOICE TO PRIME #2-4 1150-1475 LBS. 63.75-66.00; CHOICE #2-3 61.50-64.00; CHOICE 1475-1650 LBS. 56.00-60.75.

FED HEIFERS: 12 HEAD. HIGH CHOICE TO PRIME 1100-1200 LBS. 63.00-65.25; LOWER DRESSING 60.00-61.50.

VEAL CALVES: 101 HEAD. CULLS 85-110 LBS. 24.00-31.00, 60-85 LBS. 18.00-25.00.

FARM CALVES: HOLSTEIN BULLS 20.00 HIGHER. #1 95-120 LBS. 100.00-128.00; 88-92 LBS. 45.00-95.00; HOLSTEIN HEIFERS #2 85-110 LBS. 120.00-152.00, 70-80 LBS. 60.00-112.00; BEEF X BULLS 65.00-100.00; HEIFERS 60.00-85.00.

BUTCHER HOGS: #1&3 230-260 LBS. 27.00-28.00; 282 LBS. 27.00-29.50.

SOWS: 28 HEAD, 2.00-3.00 HIGHER. 350-475 LBS. 17.00-22.50; 500-650 LBS. 23.00-26.00.

BOARS: 3 HEAD. 500-775 LBS. 6.75-7.25.

STOCK CATTLE: 325 HEAD. STEERS MED. AND LARGE FRAME 200-500 LBS. 69.00-84.00; 500-600 LBS. 65.00-80.00; 600-700 LBS. 63.00-79.00; 700-800 LBS. 59.00-68.00; 800-975 LBS. 55.00-67.00.

HEIFERS: MED. AND LARGE FRAME 200-500 LBS. 68.00-83.00; 500-600 LBS. 59.00-71.00; 600-700 LBS. 55.00-66.00; 700-900 LBS. 49.00-56.00.

BULLS: MED. AND LARGE FRAME

200-400 LBS. 73.00-84.00; 400-500 LBS. 68.00-82.00; 500-600 LBS. 67.00-77.00; 600-700 LBS. 55.00-69.00; 700-900 LBS. 52.00-63.00; 900-1000 LBS. 48.00-50.00.

DAIRY REPLACEMENTS: MED. SPRINGERS 600.00-850.00, 1 FRESH AT 725.00.

LAMBS: 7 HEAD, GOOD SPRING 30-50 LBS. 75.00-110.00; 60-70 LBS. 82.00-100.00; WOOLED 100 LBS. TO 76.00.

GOATS: MED. TO 55.00. PIGS AND SHOATS: 61 HEAD. BY THE HEAD 35-50 LBS. 18.00-20.00.

NEXT WED., APRIL 14, SPECIAL FEEDER CATTLE SALE, 7:30 P.M.

**Westminster Livestock Auction**

Hagerstown, Md.  
April 6, 1999

Report supplied by auction

SLAUGHTER COWS: 120 HEAD, 1.00 LOWER. UTILITY 33.00-36.50; HIGH DRESSING TO 37.50; CANNERS 29.00-32.00, FEW TO 35.00; SHELLY 28.00 DOWN.

BULLS: 6 HEAD. YG#1 2062 LBS. AT 45.75; 2 HIGH YIELD 1800 LBS. 50.25-52.00; YG#2 2400 LBS. AT 38.25.

FED STEERS: 24 HEAD. HIGH CHOICE TO PRIME 1200-1450 LBS. 63.00-65.25; C #2-3 1100-1350 LBS. 61.00-62.75; HIGH CHOICE HOLSTEINS 1200-1400 LBS. 55.00; SELECT TO LOW CHOICE 45.00-52.00.

FED HEIFERS: 10 HEAD. HIGH CHOICE #2-3 1100-1200 LBS. 61.50-63.50; CHOICE 1000-1100 LBS. 56.00-59.00.

VEAL CALVES: 91 HEAD. CULLS 85-110 LBS. 25.00-30.00; 60-85 LBS. 15.00-25.00.

FARM CALVES: HOLSTEIN BULLS 20.00 HIGHER. #1 95-120 LBS. 95.00-119.00; #2 90-115 LBS. 55.00-95.00; #2 80-90 LBS. 30.00-41.00;

HOLSTEIN HEIFERS 85-115 LBS. 105.00-150.00; BEEF X HEIFERS 134-146 LBS. 85.00-87.00.

BUTCHER HOGS: 39 HEAD. #1&2 235-270 LBS. 29.00-30.00; #1&3 280-310 LBS. 24.00-27.00; 325-350 LBS. TO 18.50.

SOWS: 36 HEAD. 350-475 LBS. 16.00-19.00; 475-650 LBS. 20.00-22.50. BOARS: 2 HEAD. 500-700 LBS. TO 7.00.

STOCK CATTLE: 231 HEAD. BEST DEMAND FOR THIN FLESHED GRASS CATTLE. STEERS MED. AND LARGE FRAME 200-400 LBS. 70.00-81.00, 400-700 LBS. 66.00-79.00; 700-900 LBS. 60.00-66.00; HOL. 400-500 LBS. TO 55.00.

HEIFERS: MED. AND LARGE FRAME 200-500 LBS. 67.00-77.00, 500-600 LBS. 60.00-71.00; 600-750 LBS. 55.00-65.00; 750-900 LBS. 50.00-57.00.

BULLS: MED. AND LARGE FRAME 200-400 LBS. 69.00-81.00; 400-600 LBS. 60.00-72.00; 600-700 LBS. 54.00-68.50; 700-900 LBS. 54.00-57.00.

SHEEP: 43 HEAD. 30.00-52.00, HEAVYWEIGHTS 27.00-42.00.

LAMBS: 107 HEAD. CHOICE TO PRIME SPRING 25-50 LBS. 140.00-160.00; 50-70 LBS. 125.00-175.00; 70-90 LBS. 102.00-122.00; GOOD TO CHOICE SPRING 25-50 LBS. 100.00-135.00; 50-70 LBS. 110.00-125.00; WOOLED 70-110 LBS. 78.00-88.00, 110-120 LBS. 66.00-82.00.

GOATS: 56 HEAD. LARGE 65.00-90.00; MEDIUM 45.00-75.00, FLESHY KIDS 35.00-65.00; SMALL 22.00-34.00.

PIGS AND SHOATS: 185 HEAD. BY THE HEAD, 30-50 LBS. 8.00-16.00; BY THE LB. 63 HEAD 35-50 LBS. 35.00-46.00; 32 HEAD 50-65 LBS. 37.00-43.00; 5 HEAD 75 LBS. AT 71.00; 10 HEAD 100-150 LBS. 25.00-32.00; 8 HEAD 150-170 LBS. 24.00-31.00; 7 HEAD 180-212 LBS. 21.00-29.00.

**Lebanon Produce Auction**  
Rt. 2, Box 281, Myerstown, PA 17067  
Opening April 20th, 10 AM for Spring Nursery, Produce, Greenhouse Flowers & Bedding Plants  
**Sale Every Tuesday 10 AM**  
**Hay - Straw - Corn - Grain**  
1/2 mile west of Relistville (midway between Myerstown & Schaefferstown)  
**717-367-8379** Wilmer Hoover  
**717-949-2643** Auction Site

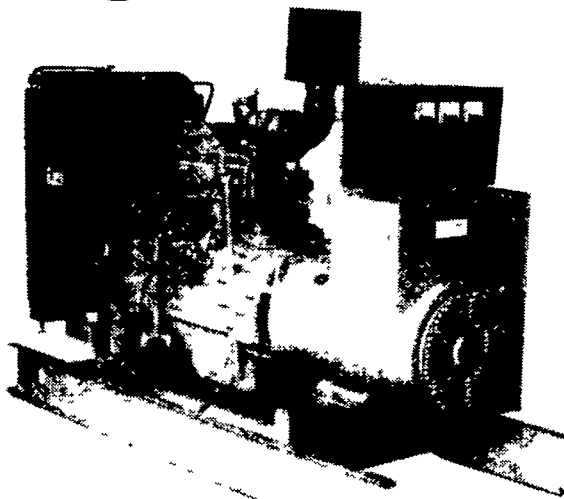
**LEESPORT FARMERS MARKET**  
LEESPORT, BERKS COUNTY, PA 19533 (610) 926-1307  
**LIVESTOCK AUCTION**  
EVERY WEDNESDAY - 1:00 P.M.

Farmers Market 9:00 AM to 8:00 PM  
Flea Market 7:00 AM to ??

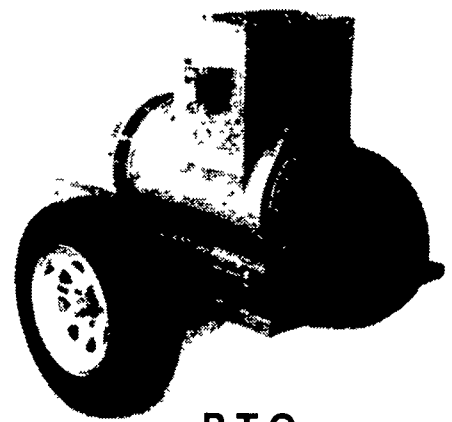
**Spring Feeder Cattle Sale**  
Friday, April 23 - 7:30 pm  
Consignments Welcome

Serving Eastern Pennsylvania for 51 years.

**Agricultural Generators**



Automatic  
L.P. Gas, Diesel, Natural  
Gas Generators  
5 to 2,000 KW



P.T.O.  
Generators  
25 to 100 KW

Service - Rental - New - Used

**PENN POWER SYSTEMS**  
Power Generation Systems Specialists

330 Fonderwhite Road, Lebanon, PA 17042  
Call Leonard Martin **717-273-4544**  
Fax 717-273-5186