

Field Days Pasture Walks April 16, 17

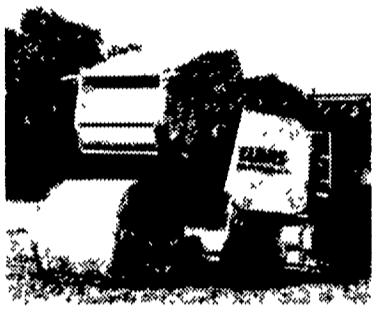
PARADISE (Lancaster Co.) — Dairy farmers are invited to attend pasture walks intended to demonstrate the qualities and management of improved grass varieties for grazing, hay or silage.

The first walk is scheduled to be held 2:30 p.m. to 5 p.m., April 16, in the Howard area of Centre County; the second is to be held 9 a.m. to noon, April 17, in the Ronks area of Lancaster County.

The guest speaker for the pasture walks is to be John Thysson, a former dairyman in Holland who is now forage director for Barenbrug U.S.A.

Refreshments are to be served. For more information on the Howard-area walk, contact John Glick at (814) 383-4529. For information on the Ronks-area walk, call Aaron King at (717) 687-6224.

CLAAS® meets the harvesting machinery needs of *all* farmers



CLAAS has all the harvesting machinery you need. We offer both heavy-duty fixed chamber round balers that produce dense weather-tight bales that resist spoiling, as well as variable chamber round balers. Both models offer all-crop flexibility. Leading-edge technology makes CLAAS balers the most reliable round balers available, even for heavy-duty silage operations. Choose ROLLALEX® net wrap or twine or both, and the optional ROTO CUT® cutting system. Economy models available.



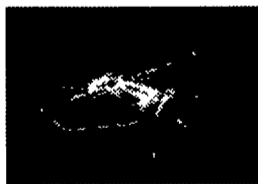
Optimum-package mid-sized big square balers suitable for all crops and conditions, available with optional ROTO CUT cutting system.

Heavy-duty disc mowers and mower conditioners with CLAAS's heavy-duty cutting bar, for high-speed, efficient and even cutting. Economy mowers available.



Heavy-duty tedders, available in 18' to 30' working widths, accelerate dry down. Economy tedders available.

Heavy-duty single rotary rakes with tandem axles and high-capacity twin rotary rakes adjust to uneven ground conditions and produce uniform, fast-drying fluffy windrows. Economy rakes available.



CLAAS Country

Meeting all your harvesting needs!

Visit our internet site at <http://www.claasofamerica.com> or e-mail us at claas@claasofamerica.com

Bedford
BENCE'S FARM EQUIPMENT
116 Willow Brook Lane
814-623-8601

Cambridge Springs
GREENHILL FARMS
28361 Hwy. 77
814-467-3223

Greencastle
MEYERS IMPLEMENTS, INC.
400 North Antrim Way, PO Box 97
717-597-2176

Leola
M.M. WEAVER & SONS, INC
169 North Groffdale Road
717-656-2321

New Bethlehem
HETRICKS FARM SUPPLY, INC.
RD#3, Box 177
814-275-3507

Newport
SMITH'S FARM EQUIPMENT
30 Acker Road
717-567-3562

Sandy Lake
SANDY LAKE IMPLEMENT CO., INC.
Rt. 173, 3675 Sandy Lake Rd.
724-376-2489

Williamsburg
LONGENECKERS, INC.
RR. 2, Box 121A-1
814-793-3731

WHAT'S IN THE BOX?

QUALITY AGCO® PARTS

Making A Difference In The Long Run.

The AGCO® advantage starts with durability. Our parts are designed to outlast all others, because they're made to fit the unique specifications of the equipment you own.

And in the long run that makes a big difference.

Anville, PA
BHM FARM EQUIPMENT
717-867-2211

Auburn, NY
MAIN & PINCKNEY EQUIP.
7033 Mutton Hill Road
800-232-0838

Beavertown, PA
B & R FARM EQUIPMENT
RR 1, Box 2424 (Rt 522 South)
570-658-8175

Bloomsburg, PA
NICHOLS FARM EQUIPMENT
RR #9, Box 87
570-784-7731

Carlisle, PA
CARLISLE FARM SERVICE
260 York Road
717-243-4419

Chambersburg, PA
CHAMBERSBURG FARM SVC., INC.
975 South Main St.
717-264-3533

Columbia Cross, PA
COLUMBIA CROSS ROAD
RD 2, Box 62
717-297-3873

Denton, MD
SHAFFER EQUIPMENT CO.
26193 Burrsville Road
410-479-1477

Elizabethtown, PA
HERNLEY'S FARM EQUIPMENT
2095 South Market St
717-367-8867

Fontana, PA
UMBERGER'S OF FONTANA, INC.
8 Miles East of Hershey on Rt 322
717-867-5161/800-261-2106

Frederick, MD
KNOTT & GEISBERT, INC.
White - New Idea
3432 Urbana Pike
1-800-255-5549

Glen Rock, PA
WERTZ FARM EQUIPMENT
RD#3, Box 458 (PA Route 516)
717-235-0111

Ingleside, MD
GIBSON FARM EQUIPMENT
3120 Goldsboro Road
410-758-0262

Jamesville, NY
N. PALLADINO & SONS
3140 Sweet Road
315-667-3141

Klingertown, PA
STANLEY'S FARM SERVICE
717-648-2088

Martinsburg, PA
BURCHFIELD'S, INC.
112 S Railroad St
814-793-2384

Oneonta, NY
SHARON SPRINGS GARAGE
184 East St
607-432-8411

Penn Run, PA
MANOR MOTORS
Route 1
724-254-4753

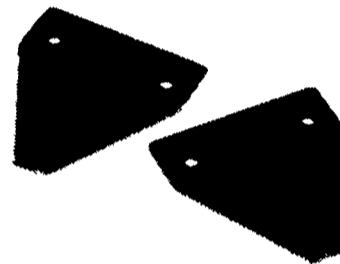
Punxsutawney, PA
LONDON FARM SUPPLY
814-938-7444

Roxburg, PA
HOLTRY'S WELDING & REPAIR
Main St
717-532-7261

Saron Springs, PA
HOLTRY'S WELDING & REPAIR
Rt 20518-284-2346

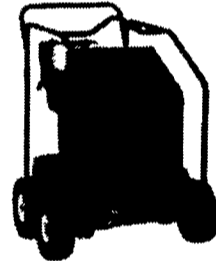
Somerset, PA
LINCOLN SUPPLY & EQUIPMENT CO.
422 Riggs Road
814-443-1691

Kondex Cutting Parts



Self-sharpening edges keep you cutting. Higher grade steel for longer life plus faster, better performance. Individual cutter bar components: knives, guards, hold-down clips, wear plates, and all the hardware you need. Complete knife assemblies also available.

AGCO® Pressure Washers



- Tough machines for tough jobs
- Gas and electric units available
- Heavy duty construction
- Heavy duty warranty

AGCO® Radios



- Large selection of applications
- From fender mount to in-dash stereo systems
- Variety of accessories - speakers, antennas, etc.

AGCO® Baler Twine

- Strength that holds from field to feeding
- Smooth, yet plenty of bulk for easy gripping
- Cuts clean. Edges stay tight. Resists knots
- Stores all winter without mildew or rot
- Rodents don't like the taste or the texture



Use GENUINE AGCO® Lubricants For All Of Your Equipment

Convenient 5 Gallon Bucket
All formulated to meet the performance requirements on today's low emission engines.

New 4 Quart Bottle!
Available in 110 & 330 Gallon Containers!

Washington, PA
SCHOTT EQUIPMENT SALES
Route 18 North
2075 Henderson Ave.
724-222-3780

Quarryville, PA
GRUMELLI FARM SERVICE
929 Robert Fulton Hwy. (Rt. 222)
717-786-7318