

**27 PETS**

**WANTED PUPPIES**

Pure & Mixed Litter lots for resale for companion pets

**JACK'S DOG FARM**

215-766-8802  
or  
215-766-8840  
leave message  
Tues-Sat 9 am - 5 pm

20' Pinnacle fish or poultry case w/compressor, excellent condition; 6' Pinnacle double duty deli case; Ice-Omatic ice machine w/bin, excellent condition; metal shelving; Berkley stacker/slicer; automatic checkout counter. 610/689-5909.

(2) Used Powell Cider Presses, Complete w/ Racks \$2,000/Ea/OBO. (914)795-2991.

(3) 6' ice cream dipping cabinets w/racks, \$225/ea Refrigerator 30", sundae or sandwich bar, \$385. Milk shake mixer, \$125. 10x12 green vinyl awning w/pipe framing, \$510 717-657-0517

(15) Wheel chairs, good condition, only 2 w/leg rest, \$75/each 410/658-4351

BUNK BEDS, FUTONS, MATTRESS SETS. Many styles starting at \$99. Dir. 717-299-9494 / 717-393-3467.

Chillers, Government Surplus, Complete W/ Carrier Compressor, Pump, Heat Exchanger, Condenser, Controls, R-502 Refrigerant, Used For Air Conditioning, Refrigeration or Injection Molding Applications Excellent Condition Three Ton \$600, Five Ton \$900 (717) 927-9766 / (717)993-5580 Also Available Industrial Direct Drive Air Blowers.

Coolant water soluble machining coolant, synthetic & regular \$6/gal., retails for \$18/gal 717/354-3105.

Dried gooseneck gourds for birdhouses, craft projects, etc. (609)758-8726.

Ertl International 68 Series 1/16 scale tractors set; Ertl IHC 66 Series Set; Farmall P20 Precision Series 1/16 scale; NASCAR racing collectibles. 717/252-3373.

FOR SALE: Used desks, files, chairs, fireproof files, etc. NOLT'S Ephrata, PA (717)859-1617.

KOHLER GENSET, 60kw diesel turbo engine, 120/208 volts, 3 phase, model 60R0781, \$4,000 firm. Call (908)788-5022.

LOOKING FOR Elsie Dinmore Books (215)652-7864 M-F.

Monarch lathe 20" swing, 60" centers, 3-jaw chuck, 4-jaw chuck, face plate, steady rest, well tool, VGC, \$4900 908/453-2088.

PAYING UP TO \$2.50/sq ft for wide walk-smooth attic floor We remove Also paying \$.50-1.00 for pine and oak siding 1" & thicker. 800/765-3966.

Small fuel tank w/electric pump, w/stand, \$350. 12x10 steel door w/white enamel, insulated, 2 years old, \$650. 215/646-6873.

WANTED Old oak furniture, wooden shutters, blanket chests, pedal toys, Scott's push mowers, Maytag wringer washers, Coke Pepsi coolers. 717/272-2255.

**32a ANTIQUES**

Made of Athens wood burning cook stove, good condition, make offer. 609-298-6440

Scarecrow Herb Farm, 2 mi east of Shrewsbury, PA, Rt 851 Wed Sun 717/227-0269 or scarecrowfarm@ruralife.net. Buggy made in Stewartstown, PA, cigar store Indian, wooden wheelbarrows, crocks and jugs.

**34 AUTOS**

**Melard's Truck & Auto Sales**

1289 Division Hwy. Ephrata, PA 17522  
Specializing in Mini Vans (717) 738-4870

- \* 1997 Chevy Venture, V6, Auto, Air, Cruise, Privacy Glass, Elec Windows/Locks, Tilt, AM/FM Cass, 20,000 Mi., Green ..... \$19,800
- \* 1996 GMC Safari, AWD, Ext LS, 4.3 Vortec Auto, Dual Air & Heat, Elec. Windows/Locks, Cruise, Tilt, Cass & CD, Privacy Glass, Chrome Wheels, 39,000 Miles, 2-Tone Teal. .... \$16,900
- \* 1996 Plymouth Grand Voyager SE, 4 Dr., 3.3 Auto, Dual Air & Heat, Privacy Glass, Elec. Windows/Locks, Cruise, Tilt, Child Seats, 55,000 Miles ..... \$14,500
- \* 1995 Chevrolet Astro Ext A W.D., LT 4.3 Vortec, Auto, Dual Air/Heat, Elec.Windows/Locks, Seat, Cruise, Tilt, Privacy Glass, 47,000 Miles, Teal. \$14,900
- \* 1995 Astro Ext, AWD, CL 4.3 Vortec Auto, Air, Dual Heat, Cruise, Tilt, Elec Windows/Locks, Seat, Privacy Glass, 79,000 Miles, Tan. .... \$11,000
- \* 1995 Dodge Caravan SE, 3.3 Auto, Air, Cruise, Tilt, Elec Windows/Locks, 64,000 Miles, Maroon... \$10,000
- \* 1993 Astro Ext LT, 4.3 Auto, Air, Elec Windows/Locks, Cruise, Tilt, Privacy Glass, 70,000 Miles, Black. .... \$10,000
- \* Just Traded - 1991 Astro Extended CL, A W.D., 4.3 Auto, Dual Air, Cruise, Tilt, Elec Windows/Locks, Cass., 105,000 Miles, Black
- \* 1988 Chevy 1500 Silverado, 4x4, Ext Cab, Long Bed, 350 Auto, Air, Elec Windows/Locks, Alum Wheels, 151,000 Miles, Blue..... \$8,500

**35 TRUCKS & TRAILERS**

**Used Truck Bodies**



Installed on NEW or Old Truck  
"Makes your Old Truck Look Like NEW!"  
• Dry Van Bodies 10' to 24' • Reefer Bodies  
• Flat Bodies  
(Completely Refurbished Bodies in Most Cases)  
- Same Day Service!

Phone 717-898-0683  
**CHARTER ENTERPRISES, LTD.**  
270 Hostetter Road, Manheim, Pa

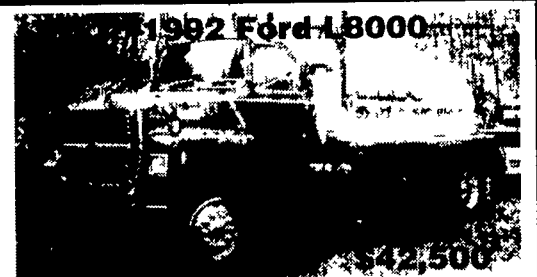
**35 TRUCKS & TRAILERS**

**KEYSTONE TARPS SERVICE & SALES**

Is A Manufacturer Of Custom Tarps

- Systems
- Load Straps
- Tarp Straps
- Gloves
- Storage Covers
- Used Railroad Ties

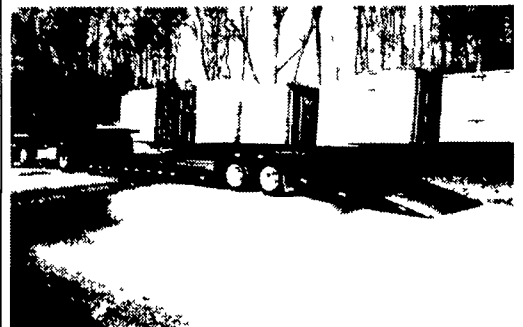
VISA 1-800-798-TARP (8277) MasterCard  
FAX 717-435-0036 717-435-0752



1992 Ford L8000  
Single Axle 5 Spd/2 Spd Rear, 210 H P Ford Motor - 2500 Gal Vacuum Tank, Massport Pump, Excell Cond, 83,000 Mi  
**610/826-4381**



**1989 MACK SUPERLINER**  
350 HP, 9 SPD, 60" SLEEPER, DOUBLE FRAME  
2 AIR SEATS, 246" WHEEL BASE,  
AIR SLIDE 5TH WHEEL  
NICE TRUCK ONLY \$16,900.00



**1998 TALBERT HYDRAULIC TAIL**  
DETACHABLE GOOSENECK TRAILER  
35 TON, 50' X 102", AIR RIDE 20,000 LB WINCH  
LIKE NEW - ONLY \$34,900.00

1-877-526-3655  
FAX 800-564-7789  
**NORTH EAST ENTERPRISES**  
WORLD'S LARGEST STOCKING LANDOLL DEALER  
**ASK FOR WAYNE**

**31 NOTICE**

**INVITATION FOR BIDS**

The Juniata County Conservation District is requesting bids for the construction of a manure stacking facility and concrete barnyard to be funded in part by the Chesapeake Bay Program. The construction of this project is expected to begin by the end of July. The site is located in Delaware Township Juniata County on Dursyl Trego's farm.

There will be a site showing at 9:00 AM on Monday, May 3rd, 1999 at the site location. Excavators, bulldozers, and concrete contractors are encouraged to attend. Prospective contractors will receive a bid package which contains instructions to bid, a sample contract form, the plans the specifications for the project, and a bid sheet. Bid packages will be available from the Juniata County Conservation District, as well as at the site showing.

Small and minority business enterprises are encouraged to respond to this invitation for bids.

The bid opening will be held at the Juniata County Conservation District Office, Smith Road, RR 3 Box 302 Mifflintown, PA 17059 on May 14th, 1999 at 12:00 PM.

To obtain further information contact the Juniata County Conservation District at Juniata Co Conservation District RR 3, Box 302, Mifflintown PA 17059 (717) 436-8953, ext. 5

**Makita GENERATORS**

Model G6101R  
6 Models Available - Several Units In Stock  
**MARTIN'S EQUIPMENT CO.**  
Route 501 Schaefferstown 717-949-6817

**Top Dollar Paid** for  
Wide Attic Flooring,  
Barn Granery Boards,  
Wide Roof Boards,  
Big Beams of  
Chestnut, Heart Pine,  
White Oak, White  
Pine, Interior Salvage  
of Early Stone of Brick  
House, Indian Doors,  
Hand-Hewn House  
Joints and Rafter's  
Summer Kitchens, Old  
Factories, Old  
Warehouses and Log  
Houses!!!!  
**(610)857-1002**  
Anytime  
Pay the most &  
Travel the Farthest

**LIVE GAME FISH** Fingerlings and Adults, Large and Small Mouth Bass, Spotted and Rock Bass, Bream Crappies, Trout, Channel Cats, Bullheads, Walleyes, Perch, Minnows, Northern Pickeral, Muskies, Red Gills, Mulletts, Carp, Eels, Turtles, Frogs, Israeli Carp. Also Aquatic Plants and Water Lilies. EDUCATIONAL CATALOG \$2.00  
Koi Truck Air and Parcel Post Delivery  
**ZETTS FISH HATCHERIES**  
DRIFTING, PENNA. 16834  
Phone: 814-345-5357

**32 MISCELLANEOUS**

1997 Timberwolf firewood processor w/30' belt elevator, 1993 Ford L9000 triaxle log truck w/120A Apprentice loader, 30' Trailco aluminum dump trailer; 1978 cabover Kenworth, excellent condition; Atlantic GL148 grapple fork, universal mount w/3800lb rating 717/987-3644 leave message.

**Need Storage?**

**Storage Containers For Sale.**  
20' - \$1,750, 40' - \$2,350  
Ideal for Machinery, Grain, Tools, Etc.  
Free Delivery Within 150 Miles of Philadelphia.  
**717/426-4919**

**Koi R-Us Fish Farm**  
Quality fingerlings always available  
**215-536-6076**  
For pickup please allow 24 hr notice

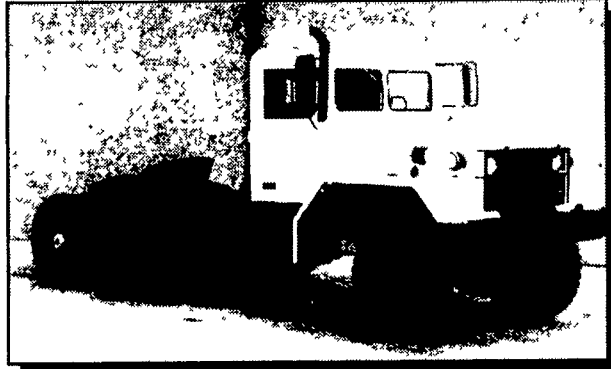
**O.F.C.G. INC.**  
111 Import Road, Pittston, PA 18640  
**570-883-1160 Fax 570-883-1159**

Make	Model/Year	Condition	Specifications	Price
Van Norman	1950's	very good	13x54 horizontal table	\$500
Chori Majestic	HB65 1960's	very good	Automatic Lathe	\$2,000
Suga	STM-2 1960's	very good	Auto Turn Mach.	\$2,000
Union Chemnitz	BF80 1950's	good	spindle 3 table rotary 36x44 ht 36"	\$8,000
Royal Oak	D-5	very good	grinder w/attachments	\$1,500
Traub	A20 1950's	very good	7/8 collett	\$850
Mitsui Soiki	1960's	very good	table 21"x16" ht under table 22"	\$3,000
King Vertical Turret	1940's	good	52" table, 40" ht under table	\$3,000

**ALL PRICES ARE NEGOTIABLE**

**ARMY 6x6 TRUCKS**

2 1/2 Ton ★ 5 Ton ★ 10 Ton



Harvest ★ Spreaders  
Feeders ★ Fuel/Water  
100% Financing  
Lease Plans  
(Qualified Buyers)

Dependable and Field Proven Complete Military Truck Parts Inventory

**MEMPHIS EQUIPMENT**

766 S. Third St. Memphis, TN 38106 901-774-0600 Fax 901-946-1919  
821 Lincoln Way West Chambersburg, PA 17201 717-263-4194 Fax 717-263-4555

www.memphisequipment.com  
**THE NATION'S LARGEST ARMY TRUCK DEALER**