

**MERCER LIVESTOCK AUCTION**  
MERCER, PA

**MARCH 23, 1999**  
CATTLE 352 (PDA) Compared to last week's sale slaughter steers 1 25 to 1 75 higher, sl cows mostly steady to stronger  
SLAUGHTER STEERS few High Choice and Prime 2-4 1400-1510 lbs 65 00-67 00, Choice 2-3 1050-1500 lbs 61 00-65 50, 1500-1790 lbs 58 00-60 50, Select 1-3 56 00-63 00, few Standard 1-2 49 00-55 00  
HOLSTEINS couple Choice 2-3 1285 & 1545 lbs 54 00-55 00, few Select 1-2 247 25-50 25  
HEIFERS few High Choice and Prime 2-4 1045-1300 lbs 61 75-63 25, Choice 2-4 1025-1375 lbs 60 00-62 75, few Select 1-3 55 00-60 00, Standard 1-2 45 00-54 00  
COWS Breakers 75-80% lean 35 00-40 50, couple to 43 25, Boners 80-85% lean 33 25-38 25, Lean 85-90% lean 27 00-33 75 Shells down to 20 00  
BULLS few Yield Grade 1 1180-2130 lbs 44 00-56 00, few Yield Grade 2 1350-2025 lbs 36 50-42 00  
FEEDER CATTLE STEERS Medium 1 325-650 lbs 66 00-78 00, Large 2 325-1100 lbs 46 50-61 00, HEIFERS Medium 1 350-685 lbs 62 00-73 00, Medium 2 350-615 lbs 46 00-56 00, BULLS Medium 1 300-550 lbs 60 00-74 00, Medium 2 300-1000 lbs 45 00-55 00  
CALVES 112 VEALERS Standard and Good 80-115 lbs 20 00-30 00, Utility 60-80 lbs 9 00-20 00  
FARM CALVES No 1 Holstein bulls 90-135 lbs 40 00-70 00, one 95 00, No 2 85-135 lbs 25 00-50 00, one No 1 Holstein heifer 115 lbs 195 00, No 2 75-105 lbs 65 00-175 00  
HOGS 89 Barrows and gilts steady to 3 00 lower  
BARROWS AND GILTS 49-54% lean 220-280 lbs 30 00-32 75, 45-50% lean 220-280 lbs 28 00-28 50, 40-45% lean 270-290 lbs 23 00-28 00  
SOWS few US 1-3 540-675 lbs 23 25-27 00  
BOARS couple 395 & 850 lbs 5 00 and 7 00  
FEEDER PIGS 0 NO MARKET TEST! SHEEP 4 NEW CROP LAMBS few Choice 115 00-130 00  
GOATS 2 One Large 55 00, one Small 16 00 --- per head

**New Holland Horses**

New Holland Sales Stables  
New Holland, PA  
Monday, March 22  
Report Supplied By Auction  
186 HEAD. MARKET STEADY.  
WORK HORSES 875.00-1150.00.  
DRIVING HORSES 510.00-1125.00.  
RIDING HORSES 450.00-925.00.  
BETTER RIDING 1000.00-1460.00.  
REGISTERED RIDING  
8 25.00-2550.00, 3 HEAD  
2050.00-2550.00.  
PONIES 210.00-410.00.  
LARGE PONIES 500.00-650.00, 1 AT  
725.00.  
COLTS 225.00-425.00.  
KILLERS, HEAVYWEIGHTS  
700.00-850.00, LIGHTWEIGHTS  
435.00-600.00.

**State Graded Feeder Pig Sale**

Carlisle Livestock Market, Inc.  
Thursday, March 25, 1999  
Report Supplied By Auction  
RESULTS ON 649 PIGS.  
TREND: COMPARED TO MARCH 12, STATE-GRADED SALE, PIGS WERE MOSTLY 5.00 TO SPOTS 15.00 HIGHER. ALL PIGS ARE FROM QUALIFIED OR MONITORED HERDS. THEY WERE WEIGHED ON ARRIVAL AND SOLD BY THE HUNDREDWEIGHT.  
US#1&2: 514 HEAD. 7 HEAD 24 LBS. 125.00; 48 HEAD 30-39 LBS. 50.00-100.00; 86 HEAD 41-49 LBS. 50.00-60.00; 164 HEAD 51-59 LBS. 45.00-62.00; 173 HEAD 64-69 LBS. 41.00-64.00; 29 HEAD 71-79 LBS. 50.00-54.00; 7 HEAD 81 LBS. 42.00.  
US#2: 98 HEAD. 14 HEAD 29 LBS. 61.00; 16 HEAD 41 LBS. 42.00-48.00; 36 HEAD 51-59 LBS. 46.00-47.00; 30 HEAD 61-69 LBS. 46.00-50.00; 2 HEAD 105-130 LBS. 30.00-32.00.  
AS IS: 37 HEAD. 8 HEAD 26-29 LBS. 100.00; 12 HEAD 39-49 LBS. 25.00-27.00; 12 HEAD 68 LBS. 30.00; 5 HEAD 111 LBS. 25.00.  
NEXT STATE GRADED FEEDER PIG SALES FRIDAY, APRIL 9 AND 23. RECEIVING FROM 6 A.M.-10:30 A.M. SALE TIME 1 P.M.

**Pennsylvania Livestock Auction**

Waynesburg, Pa.  
Thursday, March 25, 1999  
Report Supplied by Auction  
CATTLE: SL COWS: UTILITY & COMMERCIAL 32.50-41.50; CUTTER & BONING UTILITY 31.00-37.00; CANNER & LOW CUTTER 28.00-33.50; SHELLS 26.50 & DOWN. BULLS: YIELD GRADE 1 1500#-2000# 38.00-52.25; YIELD GRADE 2 1000#-1400# FAT 34.00-45.00.  
FEEDER STEERS: M&L-1 300-500# 55.00-90.00; 250-280# 50.00-91.00, M 600-900 LBS. 40.00-64.00. HEIFERS M 1&L-1 300-500# 38.00-78.00; L-1 400-650# 42.00-66.00. BULLS M&L-1 300-620# 42.00-80.00.  
CALVES: VEAL: PRIME 68.00-80.00; CHOICE 38.00-70.00; GOOD 35.00-60.00.  
FARM CALVES: #1 HOLSTEIN BULLS 90-120# FEW 35.00-75.00; #2 HOLSTEIN BULLS 80-100# FEW 20.00-40.00; BEEF X BULL&HFRS./HD. 20.00-160.00.  
HOGS: BARROWS & GILTS #1-2 210-255# 30.00-38.00; #2-3 255-280# 30.00-37.00; SOWS #1-3 300-500# 20.00-32.00.  
FEEDER PIGS: 1-3 15-20# 5.00-17.00/HD.; 1-3 25-35# 10.00-21.00/HD.  
LAMBS: HIGH CHOICE 80-100 LBS. 50.00-93.00; CHOICE 40-75 LBS. 70.00-130.00; CHOICE 20-45 LBS. 120.00-200.00; FEEDER LAMBS GOOD 60.00-85.00; SHEEP 24.00-40.00; FAT SHEEP 20.00 & DOWN.  
GOATS: LARGE 35.00-115.00/HD.; MEDIUM 20.00-41.00/HD.; SMALL 10.00-19.00/HD.  
HORSES: 35.00-65.00, PONIES 20.00-50.00.

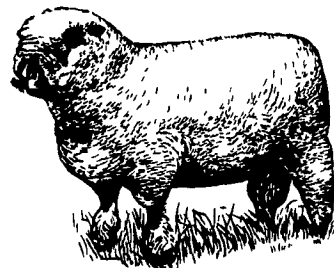
**Jersey Shore Livestock Market, Inc.**

Auction every Thursday at 4:00 p.m.  
Jersey Shore, Pa.  
Report supplied by Auction  
Thursday, March 25, 1999  
RETURN TO FARM CALF: 70.00-220.00.  
GOOD VEAL: 30.00-69.00.  
COMMON VEAL: 10.00-29.00.  
CHOICE STEERS: 62.00-64.75.  
SELECT STEERS: 55.00-61.00.  
COMMON STEERS: 51.00-54.00.  
COMMERCIAL COWS: 33.00-38.00.  
CANNERS-CUTTERS: 29.00-32.00.  
SHELLS: 26.00-28.00.  
CHOICE HEIFERS: 60.00-62.00.  
SELECT HEIFERS: 55.00-59.00.  
COMMON HEIFERS: 38.00-54.00.  
COMMON FEEDERS: 35.00-65.00.  
BULLS: 39.00-45.00.

**Indiana Livestock**

Homer City, PA  
Thursday, March 25, 1999  
Report Supplied by Auction  
CATTLE: 172. STEERS: STEADY, COWS: STEADY. HEIFERS: STEADY. STEERS: HIGH CHOICE & PRIME 2-4 1320-1450 LBS. 62.25-65.75, CHOICE 2-3 1190-1440 LBS. 60.25-63.75, SELECT 1-3 55.00-59.00, STANDARD 1-2 50.00-55.00. HOLSTEIN STEERS: FEW CHOICE 2-3 1315/1450 LBS. 52.00-54.50, SELECT 1-2 46.50-51.00, FEW STANDARD 1-2 42.00-45.00. HEIFERS: CHOICE 2-4 1040-1500 LBS. 60.25-64.25. SELECT 1-3 54.00-58.00. STANDARD 1-2 40.00-47.50.  
COWS: BREAKERS 75-80% LEAN 36.00-39.00, BONERS 80-85% LEAN 32.00-36.50, LEAN 85-90% LEAN 26.00-32.50. SHELLS DOWN TO 20.00-25.00. BULLS: YIELD GRADE 1 1700 & 1735 LBS. 49.50 & 50.00. FEW

YIELD GRADE 2 1165-1495 LBS. 42.50-45.00.  
FEEDER CATTLE: STEERS: FEW M&L 1 280-715 LBS. 61.00-70.50. HEIFERS: FEW M&L 1 340-525 LBS. 67.00-73.50, M&L 2 410-865 LBS. 45.00-62.40. BULLS FEW M&L 1 370-540 LBS. 68.60-74.00. M&L 2 400-760 LBS. 45.00-58.00.  
CALVES: 59. FEW CH. 130-265 LBS. 67.50-71.00, ONE AT 114.00, STANDARD & GOOD 75-110 LBS. 20.00-25.00. COUPLE UTILITY 75 & 80 LBS. 15.00 & 17.50. FARM CALVES: HOLSTEIN BULLS STEADY TO 20.00 LOWER. NO. 1 90-110 LBS. 72.00-92.50, NO. 2 85-110 LBS. 35.00-70.00. HOLSTEIN HEIFERS: NO. 1 104 LBS. ONE AT 175.00, NO. 2 75 & 80 LBS. 42.50 & 100.00. BEEF TYPE BULLS & HEIFERS 80-110 LBS. 45.00-82.50, ONE AT 90.00.  
HOGS: 75. BARROW & GILTS STEADY TO 3.00 LOWER. 49-54% LEAN 210-265 LBS. 28.50-31.50, 45-50% 270-320 LBS. 23.00-28.50, LITE 118-150 LBS. 24.00-26.00. SOWS: 1-3 310-495 LBS. 19.00-26.00. SOWS: 1-3 505-610 LBS. 22.00-23.00, MED. 265-410 LBS. 6.00-13.00. BOARS 275-540 LBS. 3.50-15.00.  
FEEDER PIGS: 26 1-3 30-45 LBS. 16.00-23.00, 1-3 70-90 LBS. 22.00-27.00. SHEEP: 55. H. CH & PRIME 105-135 LBS. 70.00-79.00, NEW CHOP CH 25-50 LBS. 100.00-130.00. 55-75 LBS. 112.50-135.00. 80-100 LBS. 78.00-91.00. GOOD & CH. 30-75 LBS. 80.00-91.00. SLAUGHTER SHEEP 25.00-32.50. GOATS 19: MEDIUM & FAT SHEET 35.00-61.00, KIDS: LARGE 16.00-30.00.



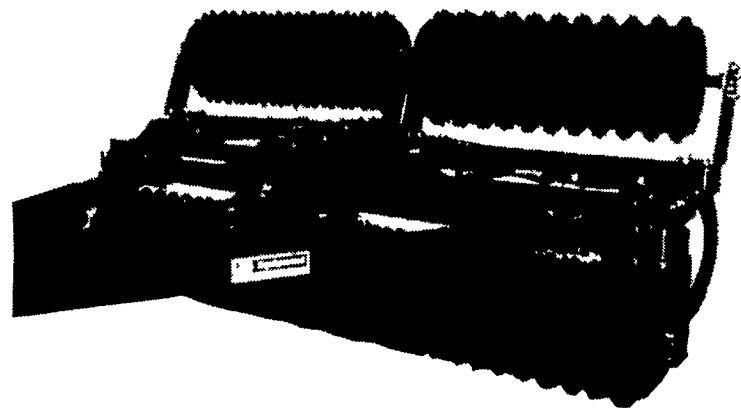
**SMOKER, LANDIS & COMPANY, LLP**  
CERTIFIED PUBLIC ACCOUNTANTS

- ✓ Individual Partnership & Corporate Taxes
- ✓ Accounting
- ✓ Tax Planning
- ✓ Auditing
- ✓ Management Consulting
- ✓ Personal Financial Services
- ✓ Computer & Consulting Services
- ✓ Payroll Preparation
- ✓ Retirement Plans

49 East Main Street, Leola  
717/656-7544 or 392-1333  
24 South Main Street, Manheim  
717/665-5979 or 393-1929

**ALTERNATE ENERGY SEMINARS**  
**Y2K**  
Wind • Solar  
Hydro • Electric  
**717-337-9325**  
**E-CO-TECH**

**RJ Pulverizers**



Available in sizes from 3 foot to 40 foot. Available with 15 inch sprocket wheels, 18 inch crowfoot wheels, 15 inch ductile wheels, or 20 inch ductile wheels. Flat fold wing packers feature a narrow 10 foot 4 inch transport width with a center bearing on the center section.

**Wholesale Distributor**  
**HAMILTON EQUIPMENT, Inc.**  
567 South Reading Road, Ephrata, Pa 17522  
**717-733-7951**

AUTHORIZED DEALERS

<b>PENNSYLVANIA</b>	
Altoona - Hines Equipment.....	814-742-8171
Bloomsburg - D&E Equipment.....	570-784-5217
Cresson - Hines Equipment.....	814-886-4183
Easton - Forks Equipment.....	610-252-8828
Glen Rock - Wertz Farm Equipment.....	717-235-0111
Greensburg - J&M Machinery.....	724-668-2276
Lancaster - Landis Brothers.....	717-653-2340
Lebanon - Landis Brothers.....	717-228-2650
New Ringold - Eckroth Bros. Farm Eq.....	570-943-2131
Orefield - Eckroth Equipment.....	610-366-2095
Oxford - Deer Creek Equipment.....	610-932-8858
Quarryville - A.L. Herr & Brothers.....	717-786-3521
Richland - Lebanon Valley Implement.....	717-866-7518
<b>MARYLAND</b>	
Chestertown - Kingstown Tractor.....	410-778-1640
Chestertown - Starkey Farm Equipment.....	410-348-2470
Frederick - H.B. Duvall, Inc.....	301-662-1125
Hagerstown - Antietam Ford Tractor.....	301-791-1200
Whiteford - Deer Creek Equipment.....	410-452-5252

**MARTIN'S TIRE & ALIGNMENT**

**We're Your Firestone Farm Tire Dealer!**

**Count on us year-round for:**

- A complete line of Firestone farm tires
  - In the field emergency repair service
  - Implement and light truck tires in stock too!
- Many Other Tires In Stock - Call For Prices

**SPRING FARM TIRE SALE**

Traction Field & Road		Firestone All Traction 23°	
13.6 x 28	<b>\$195.00</b>	18.4R34	1 ★ <b>\$550.00</b>
18.4 x 30 6 ply	<b>\$360.00</b>	20.8R38	1 ★ <b>\$730.00</b>
18.4 x 38 6 ply	<b>\$360.00</b>	20.8R38	2 ★ <b>\$875.00</b>
20.8 x 38 8 ply	<b>\$530.00</b>	20.8R42	2 ★ <b>\$880.00</b>



Visit or call us today!  
**MARTIN'S TIRE & ALIGNMENT**

Located in Churchtown  
119 Water St., Narvon, PA 17555  
**717-445-4993**

